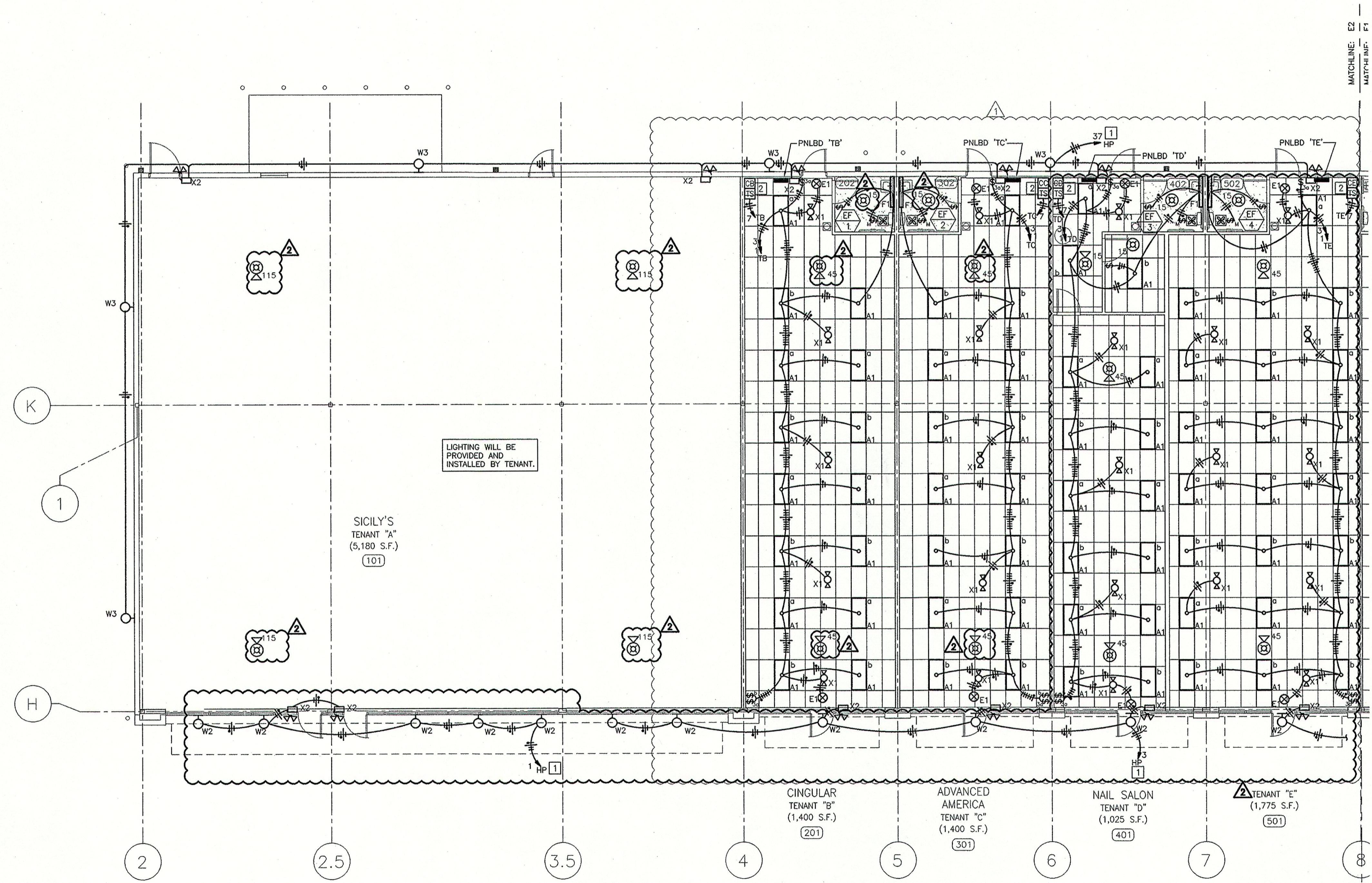


REVISION #1	FLS	BY
1		
2		
3		
4		
5		
6		
7		
8		
9		
10		
11		
12		
13		
14		
15		
16		
17		
18		
19		
20		
21		
22		
23		
24		
25		
26		
27		
28		
29		
30		
31		
32		
33		
34		
35		
36		
37		
38		
39		
40		
41		
42		
43		
44		
45		
46		
47		
48		
49		
50		
51		
52		
53		
54		
55		
56		
57		
58		
59		
60		
61		
62		
63		
64		
65		
66		
67		
68		
69		
70		
71		
72		
73		
74		
75		
76		
77		
78		
79		
80		
81		
82		
83		
84		
85		
86		
87		
88		
89		
90		
91		
92		
93		
94		
95		
96		
97		
98		
99		
100		

- GENERAL ELECTRICAL NOTES:**
1. PROVIDE UNSWITCHED CONDUCTOR FOR EMERGENCY FIXTURES AND EXIT SIGNS.
  2. INSTALL ALL EMERGENCY EXIT LIGHTS AND EXIT SIGNS AT 9'-0" OR JUST BELOW CEILING IN CASES WHERE CEILING IS LOWER THAN 9'-0".
  3. INTERCONNECT RESTROOM FAN WITH RESTROOM LIGHT AND SWITCH.
  4. PROVIDE MINIMUM OF (2)#12, (1)#12 GND. FOR ALL CIRCUITS.
  5. ADDITIONAL FIRE ALARM NOTIFICATION APPLIANCES WILL BE PROVIDED UNDER INDIVIDUAL TENANT FINISH CONTRACTS AS NECESSARY.

- ELECTRICAL PLAN NOTES:**
1. HOMERUN CIRCUIT(S) THRU CONTACTOR CONTROLLED BY PHOTOCELL AND/OR TIME SWITCH. REFER TO CONTACTOR SCHEDULE ON SHEET E5 FOR CONTROL SEQUENCE.
  2. TIMESWITCH AND CONTACTORS FOR OVERRIDE CONTROL OF LIGHTS. REFER TO CONTACTOR SCHEDULE ON SHEET E7 AND SPECIFICATIONS FOR ADDITIONAL INFORMATION.



**1 LIGHTING FLOOR PLAN**  
SCALE: 1/8"=1'-0"

**DDG DUPLANTIS DESIGN GROUP, PC**  
*Respect. Integrity. Client Satisfaction. Excellence.*  
 HOUSTON  
 THIBODAUX MANDEVILLE  
 Civil Engineering • Site Development • Land Planning • Architecture  
 314 East Bayou Road  
 Thibodaux, Louisiana 70301  
 Phone: 985.447.0099  
 Fax: 985.447.7009

STAMP  
 SIGNATURE \_\_\_\_\_ DATE \_\_\_\_\_  
 STATE OF LOUISIANA  
 CRIS & LAYMAN  
 REG. NO. 2558  
 REGISTERED  
 ELECTRICAL ENGINEER  
 3-5-07

PROPOSED RETAIL DEVELOPMENT  
 CITY OF BOUTTE  
 ST. CHARLES PARISH, LOUISIANA  
 FOR THE SPECTRA GROUP, INC.  
 MEMPHIS, TENNESSEE

DRAWN	FLS
CHECKED	DWL
DATE	8/13/07
SCALE	AS NOTED ON DWG
PROJECT NO.	0750001106
FILE	0750001106E1.DWG
SHEET	

**HENDERSON ENGINEERS**  
 8325 LEXENA DRIVE  
 IRISLA, LA 70474  
 TEL 913 742 5000 FAX 913 742 5001  
 www.hel-eng.com  
 0750001106

**E1**

Program: Duplantis\0750001106 Spectra Retail Center - Boutte - LA\2007E\0750001106E1.dwg, Plot: 8/20/07 2:03:25 PM, E:\msm\mshp\mshp\0750001106E1.dwg