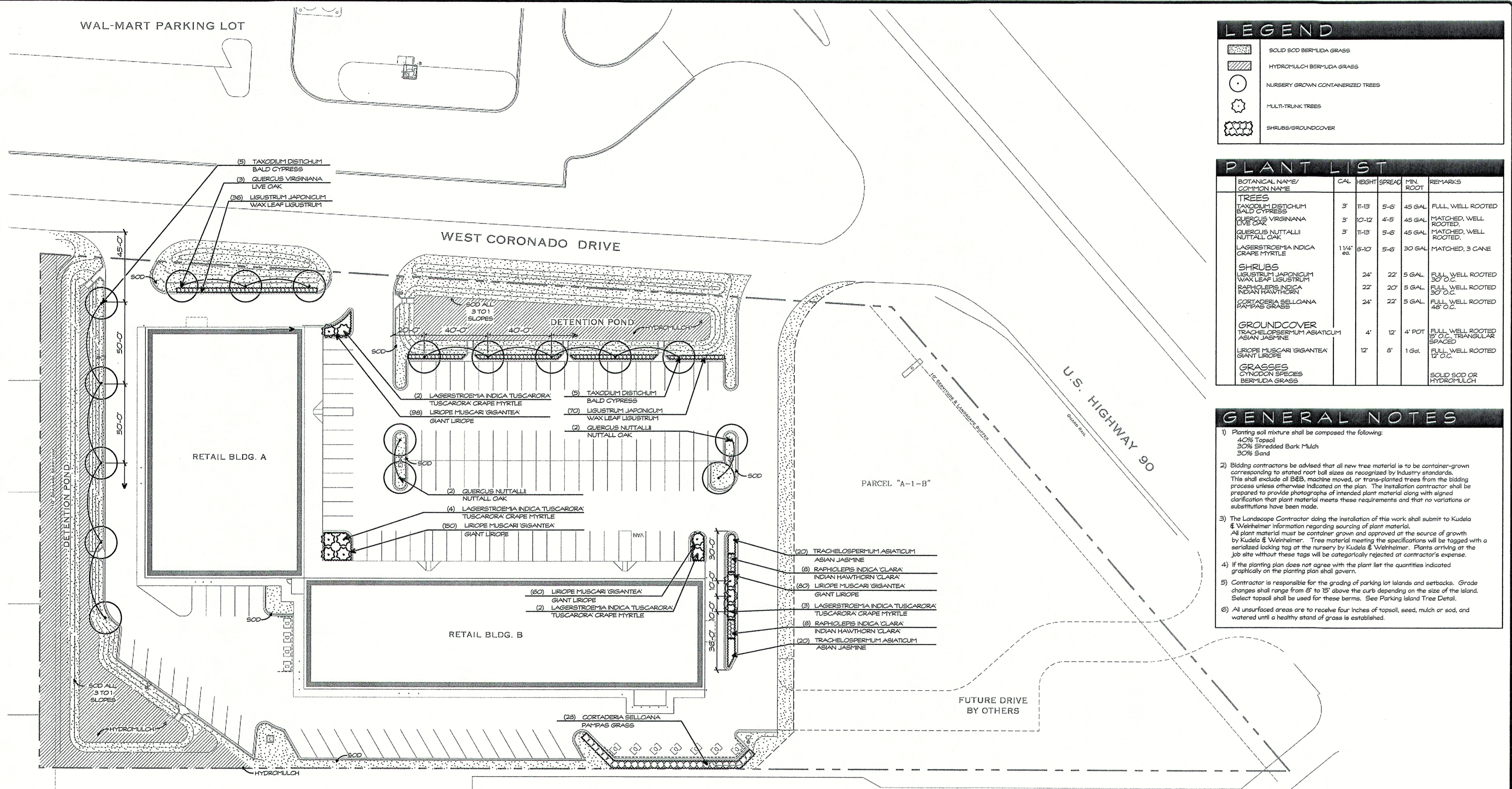


WAL-MART PARKING LOT

LEGEND	
	SOLID SOD BERMUDA GRASS
	HYDROMULCH BERMUDA GRASS
	NURSERY GROWN CONTAINERIZED TREES
	MULTI-TRUNK TREES
	SHRUBS/GROUNDCOVER

PLANT LIST					
BOTANICAL NAME/ COMMON NAME	GAL	HEIGHT	SPREAD	MIN. ROOT	REMARKS
TREES					
TAXODIUM DISTICHUM BALD CYPRESS	3'	11-13'	5-6'	45 GAL	FULL, WELL ROOTED
QUERCUS VIRGINIANA LIVE OAK	3'	10-12'	4-5'	45 GAL	MATCHED, WELL ROOTED.
QUERCUS NUTTALLI NUTTALL OAK	3'	11-13'	5-6'	45 GAL	MATCHED, WELL ROOTED.
LAGERSTROEMIA INDICA GRAPE MYRTLE	1 1/4' @	8-10'	5-6'	30 GAL	MATCHED, 3 CANE
SHRUBS					
LIGUSTRUM JAPONICUM WAX LEAF LIGUSTRUM	24"	22'	5 GAL	FULL, WELL ROOTED 30" O.C.	
RAPHIOLEPS INDICA INDIAN HAWTHORN	22"	20'	5 GAL	FULL, WELL ROOTED 30" O.C.	
CORTADERIA SELLOIANA PAN-PAS GRASS	24"	22'	5 GAL	FULL, WELL ROOTED 48" O.C.	
GROUNDCOVER					
TRACHELOSPERMUM ASIATICUM ASIAN JASMINE	4"	12"	4' POT	FULL, WELL ROOTED 30" O.C., TRIANGULAR SPACED	
LIRIOPE MUSCARI GIGANTEA GIANT LIRIOPE	12"	8"	1 Gal.	FULL, WELL ROOTED 12" O.C.	
GRASSES					
CYNODON SPECIES BERMUDA GRASS					SOLID SOD OR HYDROMULCH

- GENERAL NOTES**
- Planting soil mixture shall be composed of the following:
40% Topsoil
30% Shredded Bark Mulch
30% Sand
 - Bidding contractors be advised that all new tree material is to be container-grown corresponding to stated root ball sizes as recognized by industry standards. This shall exclude all B&B, machine moved, or trans-planted trees from the bidding process unless otherwise indicated on the plan. The installation contractor shall be prepared to provide photographs of intended plant material along with signed certification that plant material meets these requirements and that no variations or substitutions have been made.
 - The Landscape Contractor doing the installation of this work shall submit to Kudela & Weinheimer information regarding sourcing of plant material. All plant material must be container grown and approved at the source of growth by Kudela & Weinheimer. Tree material meeting the specifications will be tagged with a serialized locking tag at the nursery by Kudela & Weinheimer. Plants arriving at the job site without these tags will be categorically rejected at contractor's expense.
 - If the planting plan does not agree with the plant list the quantities indicated graphically on the planting plan shall govern.
 - Contractor is responsible for the grading of parking lot islands and setbacks. Grade changes shall range from 2" to 15" above the curb depending on the size of the island. Select topsoil shall be used for these berms. See Parking Island Tree Detail.
 - All unsurfaced areas are to receive four inches of topsoil, seed, mulch or sod, and watered until a healthy stand of grass is established.



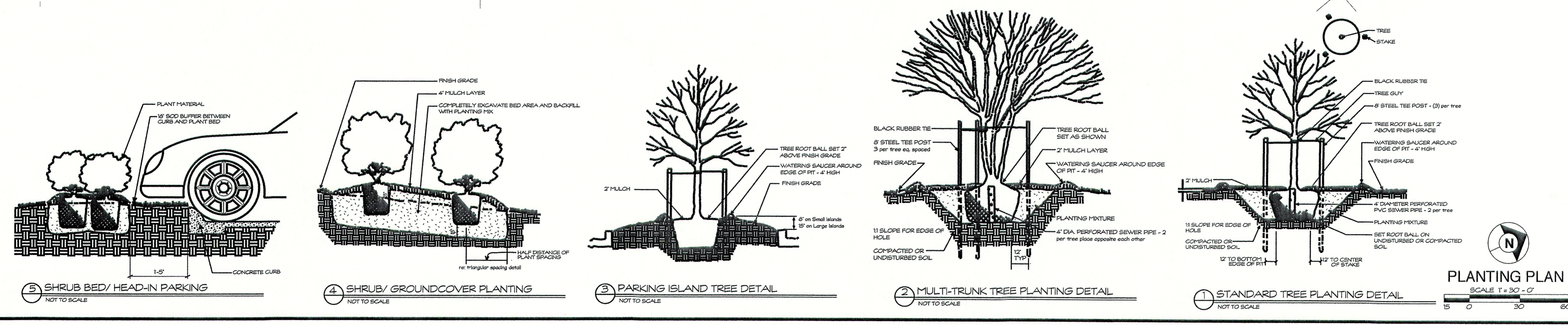
DATE	DESCRIPTION	REVISION

DUPLANTIS DESIGN GROUP, P.C.
 • Site Development • Land Planning • Public Works • Architecture
 785 N. Causeway Boulevard, Suite 201
 Metairie, Louisiana 70002
 Phone: 985.447.0090
 Fax: 985.447.7009

STAMP: LOUISIANA LANDSCAPE ARCHITECTURE
 DARRIN WEINHEIMER
 No. 10-12-2005
 SIGNATURE: _____ DATE: _____

PROPOSED RETAIL DEVELOPMENT
 CITY OF BOULTE
 ST. CHARLES PARISH, LOUISIANA
 SPECTRA GROUP, INC.
 MEMPHIS, TENNESSEE

DRAWN: RW
 CHECKED: DW
 DATE: 8-14-07
 SCALE: 1" = 30'-0"
 PROJECT NO.: DPE 725
 SHEET: L-1



PLANTING PLAN
 SCALE 1" = 30'-0"