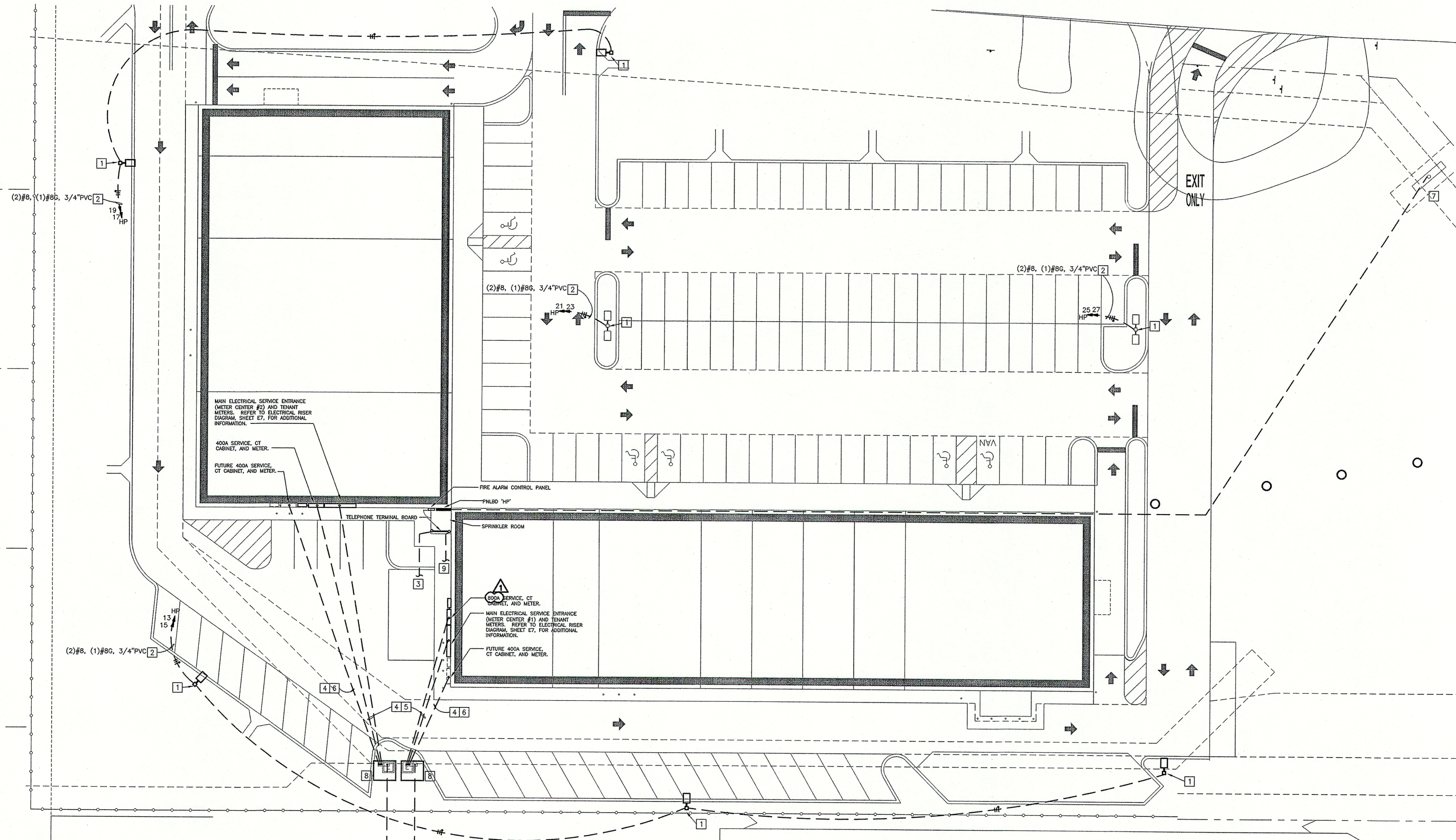


**GENERAL NOTES:**

1. LOCATIONS OF EXISTING UTILITIES SHOWN ON THIS PLAN HAVE BEEN OBTAINED FROM PROJECT CIVIL ENGINEER. VERIFY LOCATIONS OF EXISTING UTILITY LINES BEFORE PERFORMING WORK. NOTIFY DEVELOPER IMMEDIATELY OF ANY DISCREPANCIES.
2. COORDINATE WITH CIVIL AND PHOTOMETRIC PLANS FOR EXACT LOCATION OF LIGHT POLES.
3. SITE LIGHTING BRANCH CIRCUIT SIZES BASED ON VOLTAGE DROP CALCULATIONS.

**PLAN NOTES:**

- 1 PROVIDE SITE LIGHTING AS SPECIFIED ON PHOTOMETRIC PLANS IN THE CIVIL SET OF DRAWINGS. COORDINATE WITH ARCHITECT. REFER TO CIVIL DRAWINGS FOR POLE-BASE DETAIL. CONCRETE POLE BASE SHALL EXTEND 3'-0" ABOVE FINISHED GRADE.
- 2 HOMERUN CIRCUIT THRU CONTACTOR CONTROLLED BY PHOTOCELL AND TIME SWITCH. REFER TO CONTACTOR SCHEDULE FOR CONTROL SEQUENCE.
- 3 TELEPHONE SERVICE CONDUIT. REFER TO SHEET E6 FOR ADDITIONAL INFORMATION.
- 4 EXTEND CONDUIT TO LOCATION OF PAD MOUNTED UTILITY TRANSFORMER. PROVIDE WARNING TAPE. COORDINATE LOCATION WITH CIVIL. COORDINATE INSTALLATION OF BELOW GRADE CONDUIT WITH BELOW GRADE STORM, DOMESTIC WATER, AND/OR FIRE PROTECTION PIPING. VERIFY INSTALLATION REQUIREMENTS WITH LOCAL ELECTRIC UTILITY COMPANY PRIOR TO ROUGH-IN.
- 5 REFERENCE RISER DIAGRAM, SHEET E7, FOR SERVICE ENTRANCE CONDUCTOR SIZES.
- 6 (2) 2" PVC CONDUIT WITH PULLWIRE STUBBED 6" ABOVE GRADE AND CAPPED AT LOCATION OF FUTURE 400 AMP CT CABINET, DISCONNECT SWITCH AND METER. PROVIDE WARNING TAPE. REFER TO RISER DIAGRAM, SHEET E7, FOR ADDITIONAL INFORMATION.
- 7 PROVIDE (1) 2" CONDUIT WITH PULLWIRE FROM SPRINKLER ROOM TO EXTERIOR, IN-GRADE PULLBOX FOR FUTURE MONUMENT/PYLON SIGN LOCATION. REFER TO CIVIL PLANS FOR EXACT SIGN AND PULL BOX LOCATIONS. STUB CONDUIT UP 6" A.F.F. IN SPRINKLER ROOM AND CAP.
- 8 APPROXIMATE LOCATION OF PAD MOUNTED UTILITY TRANSFORMERS. VERIFY EXACT LOCATION WITH CIVIL PLANS. COORDINATE INSTALLATION REQUIREMENTS WITH LOCAL UTILITY COMPANY.
- 9 CCTV SERVICE CONDUIT. REFER TO SHEET E6 FOR ADDITIONAL INFORMATION.



REFER TO CIVIL PLANS FOR PRIMARY FEEDER POINT OF CONNECTION. COORDINATE WITH UTILITY FOR INSTALLATION REQUIREMENTS.

**1 SITE ELECTRICAL PLAN**  
SCALE: 1"=20'-0"

**HENDERSON ENGINEERS**  
8225 LEXA DRIVE  
LENSA, MS 66214  
TEL 913 742 5000 FAX 913 742 5001  
www.hel-eng.com  
0750001106

REVISION #3	DATE	DESCRIPTION	BY

**DDG DUPLANTIS DESIGN GROUP, PC**  
Respect • Integrity • Client Satisfaction • Excellence  
THIBODAUX MANDEVILLE HOUSTON  
Civil Engineering • Site Development • Land Planning • Architecture  
314 East Bayou Road  
Thibodaux, Louisiana 70301  
Phone: 985-447-0090  
Fax: 985-447-0089

SIGNATURE: \_\_\_\_\_ DATE: \_\_\_\_\_  
STAMP: PROFESSIONAL ENGINEER

PROPOSED RETAIL DEVELOPMENT  
CITY OF BOUITE  
ST. CHARLES PARISH, LOUISIANA  
FOR THE SPECTRA GROUP, INC.  
MEMPHIS, TENNESSEE

DRAWN	FLS
CHECKED	DWL
DATE	8/13/07
SCALE	AS NOTED ON DWG
PROJECT NO.	0760001106
FILE	0760001106E1.DWG
SHEET	SE1

Program: duplantis\0750001106\_Spectra Retail Center - Bouite - LA\0750001106SE1.dwg, Pk1, 3/20/2008 2:28:17 PM, lvsam@hndg.com