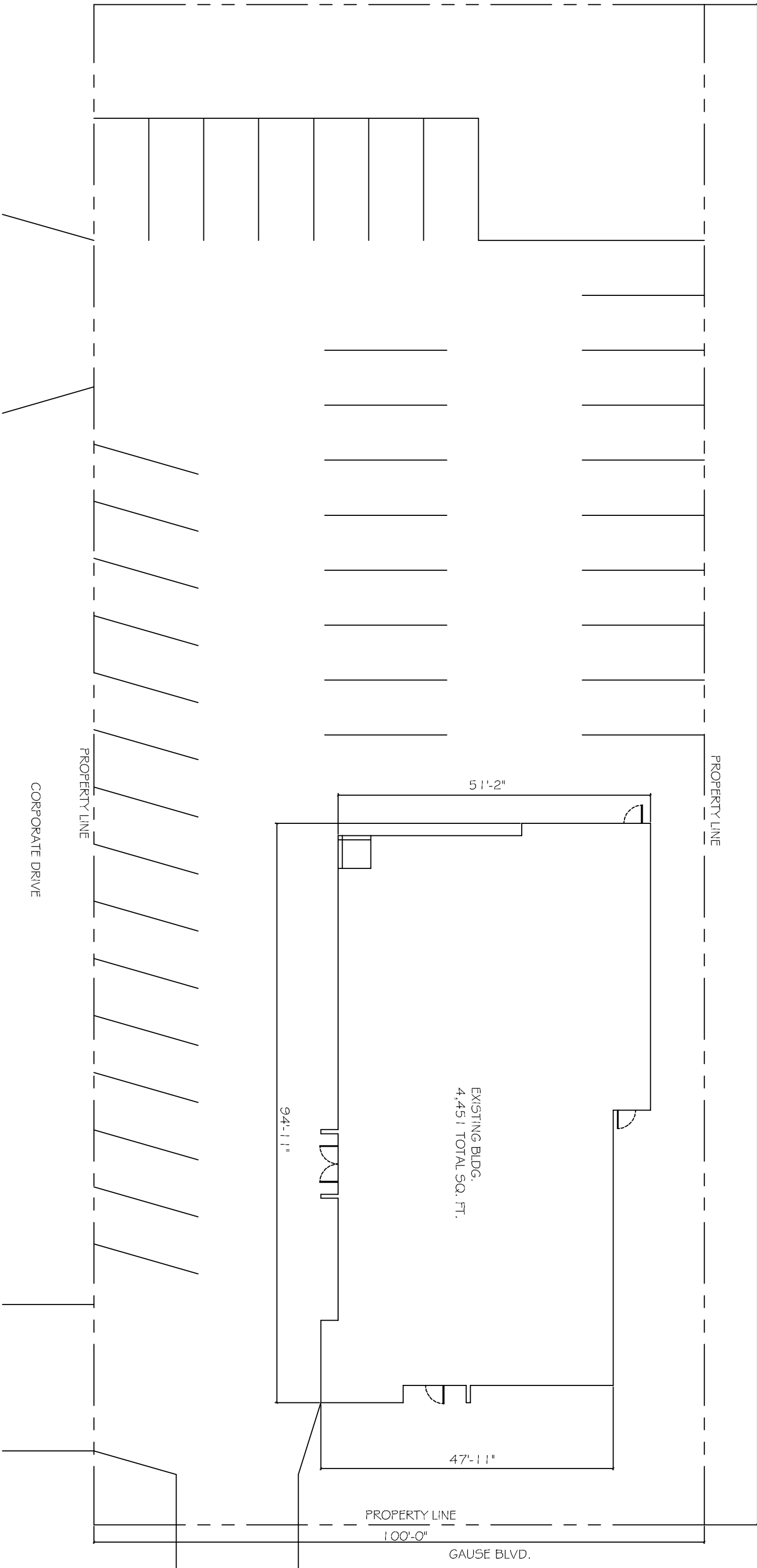


PROPERTY LINE



CORPORATE DRIVE

PROPERTY LINE

PROPERTY LINE

249'-1/2"

51'-2"

EXISTING BLDG.
4,451 TOTAL SQ. FT.

94'-11"

47'-11"

PROPERTY LINE

100'-0"

GAUSE BLVD.

REVISIONS

#	DESCRIPTION	DATE

REED INGRAM
LOT 1-A CORPORATE SQUARE

1509 GAUSE BLVD.
SLIDELL, LOUISIANA

JOB No: DATE: 09-10-2014

DRAWN BY: CKD CHECKED BY: CKD

The above drawings and specifications are the property of Dammon Engineering, Inc. and are not to be used for any other project without the express written consent of Dammon Engineering, Inc. All contact with this office or specifications shall remain the property of Dammon Engineering, Inc.



DAMMON
ENGINEERING, INC.
Architects & Engineers

CHIEF ENGINEER: BRIAN MISTICH, P.E.
CHIEF ARCHITECT: KEVIN KINGEN
554 OLD SPANISH TRAIL
SLIDELL, LA 70458

dammonengineering.com
dammoneng@bellsouth.net
PHONE: 985-644-5882
FAX: 985-641-5450

SHEET No: 1 OF 1

SITE
PLAN

C1