



**DAMMON  
ENGINEERING, INC.**

**EMMETT  
DAMMON**

**ARCHITECT  
ROBERT  
WILTSE**

1095 FLORIDA AVENUE  
SLIDELL, LA. 70458  
985-649-5832

WEBSITE:  
WWW.DAMMONENGINEERING.COM

EMAIL:  
DAMMONENG@BELLSOUTH.NET

ARCHITECTURE  
ENGINEERING  
STUDIES  
PLANNING  
INVESTIGATION  
EXPERT WITNESS

**MARCO'S  
PIZZA  
TENANT  
BUILDOUT**

2349 E. GAUSE BLVD  
SUITE 1  
SLIDELL, LA  
70461

**FINISHES  
AND  
CEILING  
PLAN**

*Robert Wiltse*

SCALE: AS NOTED

JOB#: 2082

DATE: 11-1-10

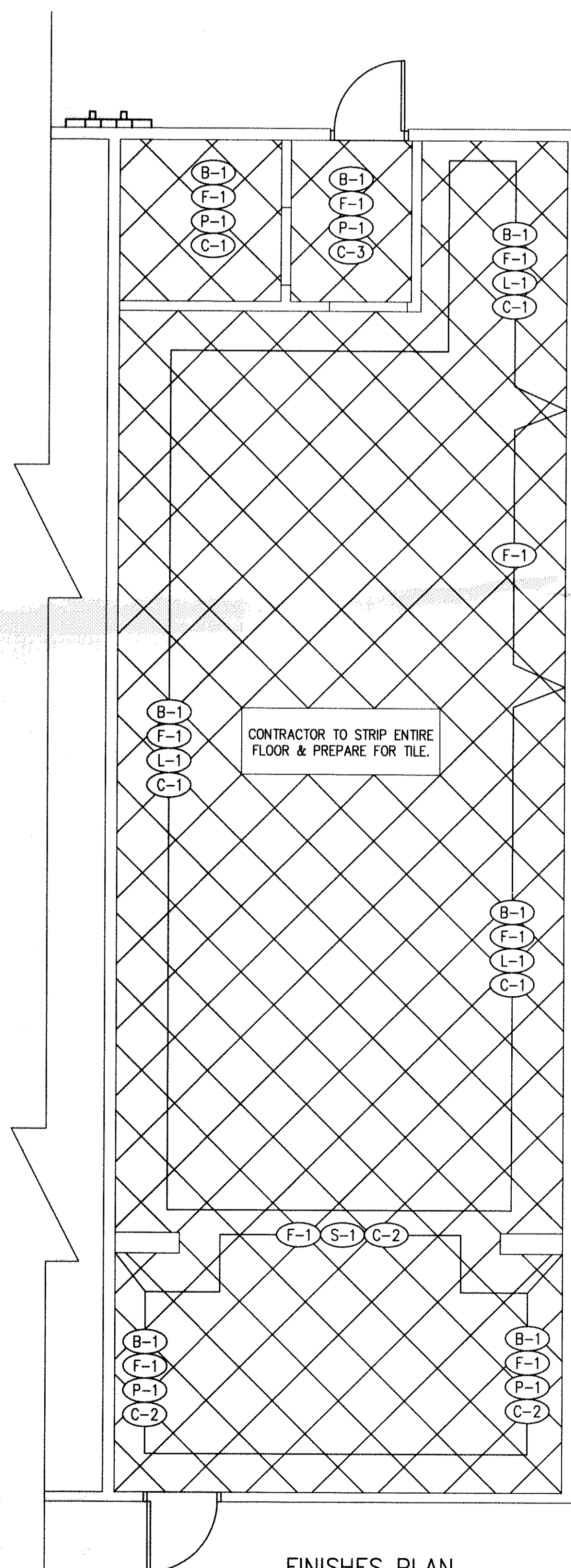
SHEET 4

**A3**

OF 10

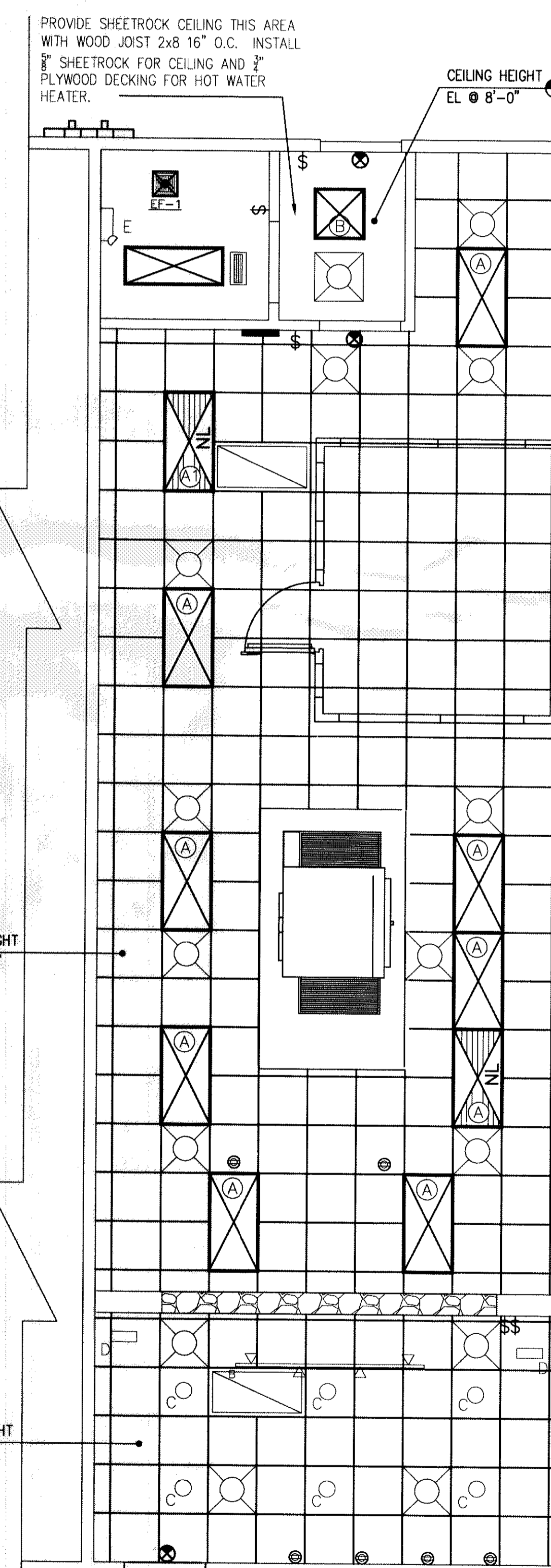
LIGHT FIXTURE SCHEDULE				
MARK	DESCRIPTION	LAMP	MODEL NO.	MANUF.
A	2X4 LAY-IN FLUORESCENT EXISTING/RELOCATED	(3) F32-T8 3500K	2SP-G-3-32-FW-A12125-120-GEB	LITHONIA
B	2X2 RECESSED FLUORESCENT WITH ELECTRONIC BALLAST	(2) F17-T8 3000K	2ESBPF217-BILP L830HT8	LITHONIA
C	CEILING RECESSED COMPACT FLOURESCENT DOWNLIGHT	(1) F42TRT 4100K 82CRI	LP6F-1/42TRT 6L4	LITHONIA
D	CEILING RECESSED COMPACT FLOURESCENT WALL WASHER	(1) CF40 BX 4100K 82CRI	WWG/CF40-120 1RLD_GEB	LITHONIA
E	EMERGENCY DUAL LAMP W/BATTERY BACK-UP, INSTALL 84" A.F.F.	HIT 5.4W	ELM2	LITHONIA
F	EMERGENCY DUAL LAMP EXIT LIGHT W/BATTERY BACK-UP	2 - 5.4W AC, 6V DC	HQMSW1R120/277	LITHONIA
G	LT8-DBL --- SURFACE TRACK LIGHT 8' BLACK FINISH, ELECTRONIC BALLAST	(4) 35W METAL HALIDE	LTD-LPHR-35M-20-HEB-DBL-LPFL	LITHONIA

FINISH SCHEDULE	
(F-1)	<b>FLOOR TILE:</b> INTERCERAMIC, FLAGSTONE SERIES, CORINTHIAN (12½"x12½"); GROUT TO MATCH HYDROMENT, "CASHMERE-HI-78"
(B-1)	<b>BASE TILE:</b> INTERCERAMIC, FLAGSTONE SERIES, CORINTHIAN (6½"x6½"); SURFACE BULL NOSE TILE. GROUT TO MATCH HYDROMENT, "CASHMERE-HI-78"
(C-1)	<b>CEILING TILE:</b> VINYL FACED 2'x2' GYP BOARD PANELS IN 1½" WHITE COMMERCIAL GRADE GRID WITH STIPPLE FINISH.
(C-2)	<b>CEILING TILE:</b> REUSE EXISTING CEILING TILES.
(L-1)	<b>LAMINATE:</b> F.R.P. - MARLITE, "IVORY P140" 4'x10' PANELS W/MATCHING IVORY PVC TRIM. FROM BASE TO CEILING GRID.
(P-1)	<b>WALL PAINT:</b> OVER TEXTURED DRYWALL - PORTER PAINTS #6700-2
(S-1)	<b>STONE VENEER:</b> OWENS CORNING STONE - COUNTRY LEDGE STONE - COLOR, CARMEL. SEAL AS REQUIRED TO MEET LOCAL HEALTH DEPARTMENT APPROVAL.
<b>FOR FINISHES INFORMATION PLEASE CONTACT:</b>	
<b>WALL ART:</b> CONSULT MARCO'S CIO NET/ART WORK FOR MOST CURRENT PRODUCT SHOTS.	
<b>WALL MURAL:</b> COORDINATE WITH MARCO'S COPORATE. MURAL REQUIRES A PLYWOOD OR DRYWALL SUBSTRATE AND NO GLASS IS RECOMMENDED. MURAL FRAME TO BE SUPPLIED BY OWNER AND WILL BE A 3" WIDE WOODEN FRAME, PAINTED. FRAME COLOR: PIONITE SR520 RED.	
<b>CLASS A FLAME SPREAD:</b> ALL INTERIOR WALL AND CEILING FINISHES TO CONFORM TO IBC 2006 SECTION 803 CLASS A FLAME SPREAD AND ASTM E-84.	



**FINISHES PLAN**  
SCALE: 1/4" = 1'-0"

FLOORING ONLY THIS AREA (NO BASE OR FRP ON WALLS BEHIND COOLER).



**REFLECTED CEILING PLAN**  
SCALE: 1/4" = 1'-0"

389436  
REVIEWED FOR  
STATE FIRE MARSHAL  
AS PER REVIEW LETTER  
BY JULIE LITTLE ARCHITECT