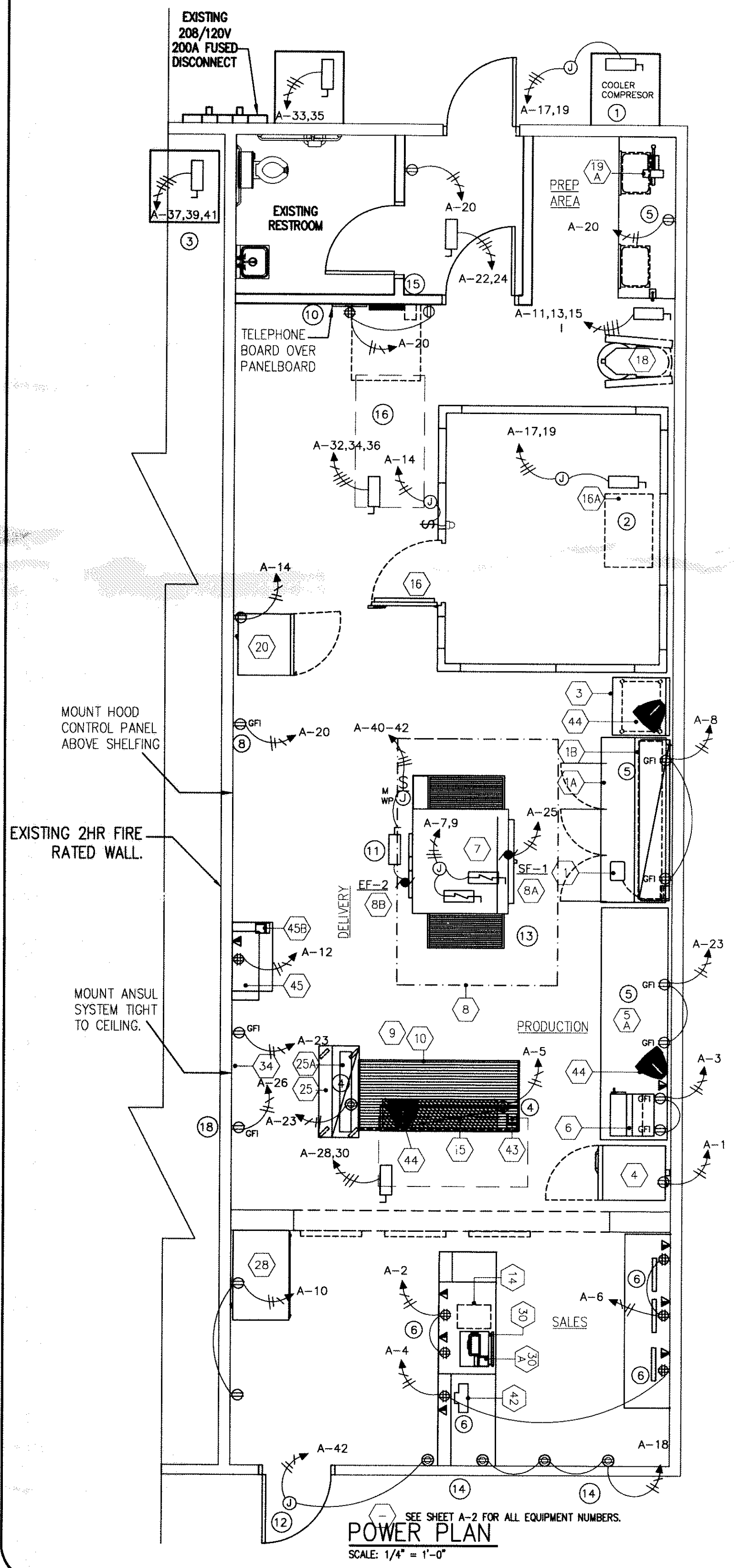


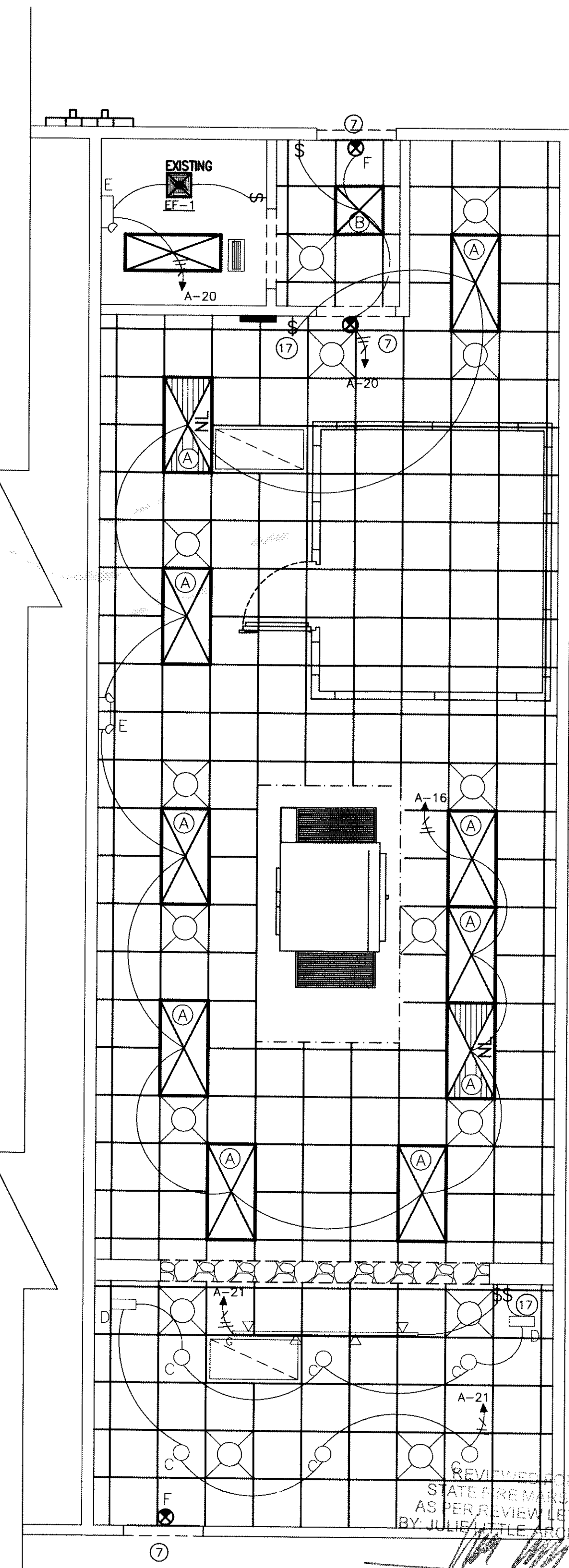
ELECTRICAL LEGEND	
	LIGHTING AND/OR APPLIANCE PANELBOARD - RECESS MOUNTED.
	FLUORESCENT LIGHTING FIXTURE - LETTER REFERS TO FIXTURE TYPE REFER TO LIGHT FIXTURE SCHEDULE.
	DISCONNECT SWITCH
	FUSED DISCONNECT SWITCH
	MOTOR OUTLET
	JUNCTION BOX OR OUTLET BOX CONCEALED ABOVE CEILING
	WALL OR CEILING MOUNTED EMERGENCY EXIT LIGHT
	WALL MOUNTED EMERGENCY EXIT LIGHT W/ DUEL LAMP
	WALL MOUNTED EMERGENCY 90 MIN. BATTERY PACK W/NO LAMPS
	WALL MOUNTED DUEL LAMP 90 MIN. EMERGENCY LIGHT W/BATTERY PACK
	ELECTRIC SMOKE DETECTOR
	DUCT MOUNTED PHOTOELECTRIC SMOKE DETECTOR, 120 VAC.
	DUPLEX OUTLET 20 A, 125 VOLT RECEPTACLE. MOUNT AT 18" A.F.F. TO CENTER, UNLESS NOTED OTHERWISE.
	DUPLEX OUTLET, RECESSED IN CEILING
	QUAD OUTLET
	COMPUTER DATA CONNECTION & TELEPHONE. E.C. SHALL VERIFY NUMBER OF DROPS AND EXACT LOCATION OF DROPS WITH OWNER PRIOR TO ROUGH-IN.
	BELL AND TRANSFORMER
	DOOR BELL BUTTON
	NUMBER IN HEX SYMBOL REFERS TO EQUIPMENT SPECIFIED IN EQUIPMENT SCHEDULE - SEE SHEET A-2.
	1P, 20AMP 125 VOLT MOTOR RATED TOGGLE SWITCH WITH WEATHER PROOF ENCLOSURE.
	SINGLE POLE SWITCH
	SPECIAL RECEPTACLE
	WEATHERPROOF
	GROUND FAULT INTERRUPTOR
	ISOLATED GROUND
	MOUNTING HEIGHT ABOVE FINISH FLOOR
	NIGHT LIGHT
	E.C.
	K.E.S.
	F.V.N.R.
	INDICATES CONDUIT RUN CONCEALED IN WALLS OR ABOVE CEILING. TICK MARKS INDICATE WIRES - LONG LINES INDICATE PHASE CONDUCTORS. WIRE SIZES ARE #12 AWG UNLESS NOTED OTHERWISE.
	CONDUIT BARS INDICATE CONDUCTORS
	PHASE (HOT)
	NEUTRAL (GROUND)
	EQUIPMENT GROUNDING

LIGHT FIXTURE SCHEDULE				
MARK	DESCRIPTION	LAMP	MODEL NO.	MANUF.
A	2X4 LAY-IN FLUORESCENT EXISTING/RELOCATED	(3) F32-T8 3500K	2SP-G-3-32-FW-A12125-120-GE8	LITHONIA
B	2X2 RECESSED FLUORESCENT WITH ELECTRONIC BALLAST	(2) F17-T8 3000K	2ESBPF217-BILP L830H18	LITHONIA
C	CEILING RECESSED COMPACT FLUORESCENT DOWNLIGHT	(1) F42TRT 4100K 82CRI	LP6F-1/42TRT 6L4	LITHONIA
D	CEILING RECESSED COMPACT FLUORESCENT WALL WASHER	(1) CF40 BX 4100K 82CRI	WWG/CF40-120 1RLD_GEB	LITHONIA
E	EMERGENCY DUAL LAMP W/BATTERY BACK-UP, INSTALL 84" A.F.F.	HIT 5.4W	ELM2	LITHONIA
F	EMERGENCY DUAL LAMP EXIT LIGHT W/BATTERY BACK-UP	2 - 5.4W AC, 6V DC	HQMSWH120/277	LITHONIA
G	LT8-DBL -- SURFACE TRACK LIGHT 8" BLACK FINISH, ELECTRONIC BALLAST	(4) 35W METAL HALIDE	LTD-LPHR-35M-20-HEB-DBL-LPFL	LITHONIA

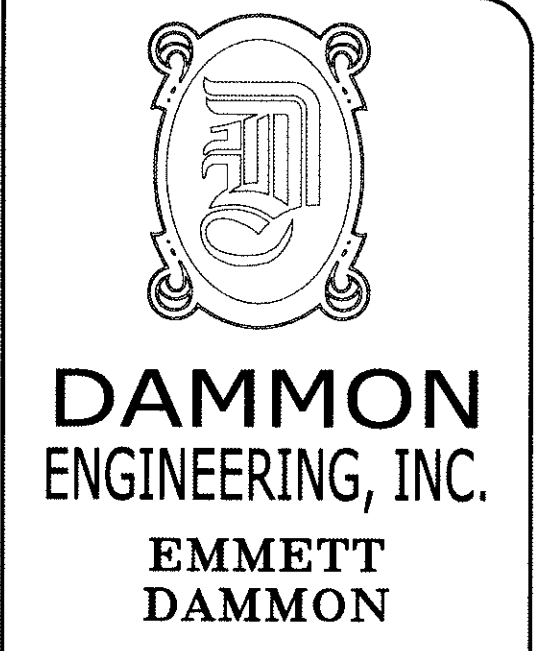


- ELECTRICAL NOTES:**
- ALL WORK SHALL CONFORM TO THE LATEST EDITION OF THE NATIONAL ELECTRICAL CODE, THE GOVERNING ELECTRICAL CODE, AND ALL OTHER INSPECTION DEPARTMENTS HAVING JURISDICTION. OBTAIN CERTIFICATES OR APPROVAL WHERE REQUIRED.
  - ALL MATERIALS FURNISHED SHALL BE NEW AND SHALL BE U.L. LISTED.
  - THE DRAWINGS INDICATE SIZE AND GENERAL LOCATION OF WORK. SCALE DIMENSIONS SHALL NOT BE USED. THE EXACT LOCATION AND ELEVATION OF ALL LIGHTING FIXTURES, RECEPTACLES AND TELEPHONE OUTLETS, ETC. SHALL BE DETERMINED BY ACTUAL CONDITIONS IN THE FIELD, UNLESS NOTED OTHERWISE.
  - PRIOR TO BIDDING, CONTRACTOR SHALL VISIT THE JOB SITE AND FAMILIARIZE THEMSELVES WITH THE EXISTING CONDITIONS.
  - ELECTRICAL CONTRACTOR SHALL COORDINATE HIS WORK WITH OTHER TRADES AND WITH OTHER CONTRACTORS WHOSE WORK MAY AFFECT THIS INSTALLATION.
  - ELECTRICAL CONTRACTOR SHALL COORDINATE INCOMING ELECTRICAL SERVICE WITH UTILITY COMPANY AND INCLUDE IN HIS BID ALL CHARGES AND FEES INCURRED IN MODIFICATIONS.
  - WHERE MORE THAN ONE SWITCH OCCURS IN THE SAME LOCATION, THEY SHALL BE INSTALLED IN A GANG TYPE BOX UNDER ONE COVER PLATE.
  - ELECTRICAL CONTRACTOR SHALL COORDINATE THE TELEPHONE INSTALLATION WITH THE TELEPHONE COMPANY AND THE GENERAL CONTRACTOR.
  - ELECTRICAL CONTRACTOR, BEFORE INSTALLING ANY OF THE WORK, SHALL SEE THAT IT DOES NOT INTERFERE WITH CLEARANCES REQUIRED FOR FINISHED COLUMNS, HUNG CEILINGS, PLASTER, PARTITIONS, WALLS, ETC. AS SHOWN IN THE ARCHITECTURAL DRAWINGS AND DETAILS. IF ANY WORK IS INSTALLED AND IT LATER DEVELOPS THAT SUCH DETAILS OR DESIGN CANNOT BE FOLLOWED, THE CONTRACTOR, AT HIS OWN EXPENSE, SHALL MAKE SUCH CHANGES IN THE WORK AS DIRECTED BY THE ARCHITECT, AS WELL AS TO PERMIT THE INSTALLATION OF THE ARCHITECTURAL WORK AS SHOWN ON THE PLANS AND DETAILS.
  - PERFORM TEST REQUIRED BY THE OWNER OR THE ENGINEER IN CONNECTION WITH THE OPERATION OF THE ELECTRICAL SYSTEM IN THE BUILDING.
  - ALL TESTS SHALL BE MADE IN ACCORDANCE WITH THE LATEST STANDARD OF THE IEEE AND THE NATIONAL ELECTRICAL CODE.
  - MINIMUM CONDUCTOR SIZE SHALL BE #12, 600V INSULATION. MINIMUM SIZE CONDUIT SHALL BE 3/4" EMT FOR INTERIOR USE, AND 3/4" RIGID ALUMINUM FOR EXTERIOR USE. USE TYPE NMC CABLE COPPER, FOR LIGHTS & RECEPTACLE CIRCUITS. EXTERIOR FITTINGS SHALL BE CAST BOXES AND COVERS. INTERIOR FITTINGS SHALL BE CAST WHERE EXPOSED ON WALLS. STAMPED BOXES MAY BE USED ABOVE CEILINGS IN AIR CONDITIONED SPACES.
  - CONTRACTOR SHALL INSTALL WIRING AND OTHER CIRCUIT COMPONENTS TO MATCH EQUIPMENT ACTUALLY INSTALLED.
  - INSTALL GROUND FAULT RECEPTACLES AT RECEPTACLE LOCATIONS WITHIN 5' OF SINKS OR LAVATORIES, AND AT EXTERIOR LOCATIONS. EXTERIOR RECEPTACLES SHALL ALSO BE WEATHERPROOF. ALL RECEPTACLES IN THE SERVING LINE AREA WILL BE GFI WITH A 5 MILLIAMP TRIP THRESHOLD.
  - BONDING AND GROUNDING SHALL BE IN ACCORDANCE WITH NFPA 70:230-63, NFPA 250-23, 250-71, & 250-72.
  - GROUND NEUTRAL IN ACCORDANCE WITH NFPA 70:250-23b.
  - FUSES SHALL BE ITT CLASS K5, 250 VOLT, 200,000 AMP INTERRUPTING CAP.
  - PROVIDE SERVICES OF A FIRE/SMOKE DETECTION & ALARM COMPANY TO DESIGN & INSTALL ALARM SYSTEM TO MEET REQUIREMENTS OF THE STATE FIRE MARSHAL.
  - ALL ELECTRICAL, MECHANICAL & PLUMBING PENETRATING FIRE PARTITIONS SHALL BE FIRE CAULKED. (PENETRATIONS THROUGH RATED CONSTRUCTION SHALL BE SEALED WITH A MATERIAL CAPABLE OF PREVENTING THE PASSAGE OF FLAMES AND HOT GASES WHEN TESTED IN ACCORDANCE WITH ASTM-E814.)
  - EXTERIOR LIGHTING SHALL BE SHADED OR INWARDLY DIRECTED IN SUCH A MANNER SO THAT NO DIRECT LIGHTING OR GLARE IS CAST BEYOND THE PROPERTY LINE. THE INTENSITY OF SUCH LIGHTING SHALL NOT EXCEED ONE FOOT CANDLE AS MEASURED AT THE ABUTTING PROPERTY LINE.
  - SEE GENERAL NOTES E-2.

- ELECTRICAL SHEET NOTES:**
- 2P, 20AMP, 240V., NEMA 3R FUSIBLE DISCONNECT SWITCH FOR CONNECTION TO COOLER COMPRESSOR, FUSE PER UNIT NAME PLATE.
  - JUNCTION BOX WITH MOTOR RATED TOGGLE SWITCH IN WEATHER PROOF ENCLOSURE, FOR CONNECTION TO EVAPORATOR UNIT.
  - 3P, 40AMP, 240V. NEMA 3R FUSIBLE DISCONNECT SWITCH FOR CONNECTION TO 7 1/2 TON A/C. FUSE PER UNIT NAME PLATE.
  - ONE (1) TWIST-LOCK OUTLET IN CEILING WITH TWIST-LOCK STRAIN-RELIEF DROP CORD TERMINATING 12" BELOW CUT TABLE HEIGHT IN A SINGLE STANDARD 3-PRONG GROUNDED OUTLET, OUTLET AND CORD SHALL BE PLACED AT THE SAME LOCATION AS THE OUTLETS FOR THE CUT-TABLE HEAT STRIPS.
  - MOUNT RECEPTACLE JUST BELOW SHELF HEIGHT.
  - MOUNT RECEPTACLE UNDER COUNTER TOP AS HIGH AS POSSIBLE.
  - VERIFY WITH OWNER EXACT LOCATION AND MOUNTING HEIGHT OF EMERGENCY EGRESS LIGHTING ABOVE DOOR.
  - ELECTRICAL CONTRACTOR SHALL INSTALL DUPLEX RECEPTACLE 6" BELOW LAY-IN CEILING AND 15" RADIUS MINIMUM FROM GAS-FIRED OVEN FOR CONNECTION TO CARBON MONOXIDE DETECTOR. GENERAL CONTRACTOR SHALL PROVIDE AND INSTALL DETECTOR.
  - ONE (1) TWIST-LOCK OUTLET IN CEILING WITH TWIST-LOCK STRAIN-RELIEF DROP CORD TERMINATING 12" BELOW CUT-TABLE. ELECTRICAL CONTRACTOR SHALL INSTALL JUNCTION BOX UNDER CUT-TABLE AND NEXT TO REFRIGERATION UNIT. FIELD VERIFY EXACT MOUNTING LOCATION AND CONNECTION REQUIREMENTS PRIOR TO ROUGH-IN.
  - TELEPHONE SYSTEM FURNISHED BY PHONE CONTRACTOR MOUNT ON 24"x24"x3/4" PLYWOOD BACKBOARD. BOTTOM OF BACKBOARD AT 72" A.F.F. BACKBOARD BY ELECTRICAL CONTRACTOR.
  - ELECTRICAL CONTRACTOR SHALL INSTALL JUNCTION BOX BELOW SUSPENDED CEILING AND MAKE HARD WIRE CONNECTION TO TYPE SO CORD DROP TO PIZZA OVEN RECEPTACLE. PROVIDE STRAIN RELIEF FOR CONNECTION AT JUNCTION BOX. FIELD VERIFY EXACT MOUNTING LOCATION AND CONNECTION REQUIREMENTS PRIOR TO ROUGH-IN.
  - JUNCTION BOX FOR CONNECTION TO MARCO'S SIGN. FIELD VERIFY EXACT MOUNTING LOCATION AND CONNECTION REQUIREMENTS PRIOR TO ROUGH-IN.
  - START/STOP SWITCH WITH PILOT LIGHT FOR EF-2 AND SF-1. PROVIDE WIRING AS REQUIRED.
  - DUPLEX RECEPTACLE INSTALLED FLUSH IN CEILING FOR WINDOW SIGNAGE. COORDINATE EXACT LOCATION WITH OWNER PRIOR TO ROUGH-IN.
  - TIME CLOCK FOR LIGHTS AND SIGNAGE SHALL BE FOUR POLE, 7 DAY TIMER WITH QUARTZ CARRY-OVER, PARAGON MODEL NO. 7007-00 OR EQUAL.
  - DUCT MOUNTED SMOKE DETECTOR INTERLOCK WITH FAN MOTOR TO SHUT-OFF FAN WHEN IN ALARM. SUPPLY REMOTE TEST SWITCH AND INDICATOR. FIELD VERIFY MOUNTING LOCATION.
  - SWITCH BANK FOR CONTROL OF INTERIOR LIGHT FIXTURES. ELECTRICAL CONTRACTOR SHALL COORDINATE LOCATION WITH OWNER PRIOR TO ROUGH-IN.
  - RECEPTACLE FOR CONNECTION TO HOTBAG.



**LIGHTING PLAN**  
SCALE: 1/4" = 1'-0"



**ARCHITECT**  
ROBERT WILTSE

1095 FLORIDA AVENUE  
SLIDELL, LA. 70458  
985-649-5832

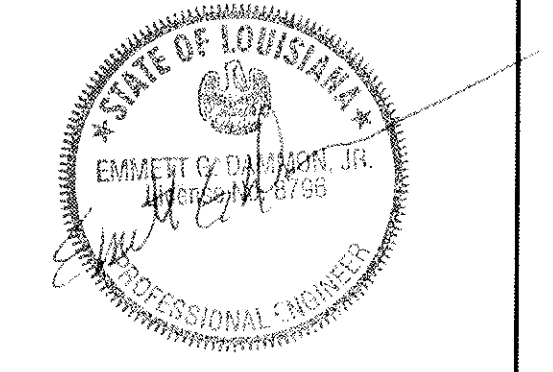
WEBSITE:  
WWW.DAMMONENGINEERING.COM  
EMAIL:  
DAMMONENG@BELLSOUTH.NET

ARCHITECTURE  
ENGINEERING  
STUDIES  
PLANNING  
INVESTIGATION  
EXPERT WITNESS

**MARCO'S PIZZA**  
TENANT  
BUILDOUT

2349 E. GAUSE BLVD  
SUITE 1  
SLIDELL, LA  
70461

**ELECTRICAL PLAN**



SCALE: AS NOTED  
JOB#: 2082  
DATE: 11-1-10  
SHEET 7

**E-1**  
OF 10