

LIGHT FIXTURE SCHEDULE				
MARK	DESCRIPTION	LAMP	MODEL NO.	MANUF.
A	2X4 LAY-IN FLUORESCENT EXISTING/RELOCATED	(3) F32-T8 3500K	2SP-G-3-32-FW-A12125-120-GEB	LITHONIA
B	2X2 RECESSED FLUORESCENT WITH ELECTRONIC BALLAST	(2) F17-T8 3000K	2ES8PF217-BILP L830HT8	LITHONIA
C	CEILING RECESSED COMPACT FLOURESCENT DOWNLIGHT	(1) F42TRT 4100K B2CR!	LP6F-1/42TRT 6L4	LITHONIA
D	CEILING RECESSED COMPACT FLOURESCENT WALL WASHER	(1) CF40 BX 4100K B2CR!	WWG/CF40-120 1RLD_GEB	LITHONIA
E	EMERGENCY DUAL LAMP W/BATTERY BACK-UP, INSTALL 84" A.F.F.	HIT 5.4W	ELM2	LITHONIA
F	EMERGENCY DUAL LAMP EXIT LIGHT W/BATTERY BACK-UP	2 - 5.4W AC, 6V DC	HQMSWIR120/277	LITHONIA
G	LTB-DBL -- SURFACE TRACK LIGHT 8" BLACK FINISH, ELECTRONIC BALLAST	(4) 35W METAL HALIDE	LTD-LPHR-35M-20-HEB-DBL-LPFL	LITHONIA

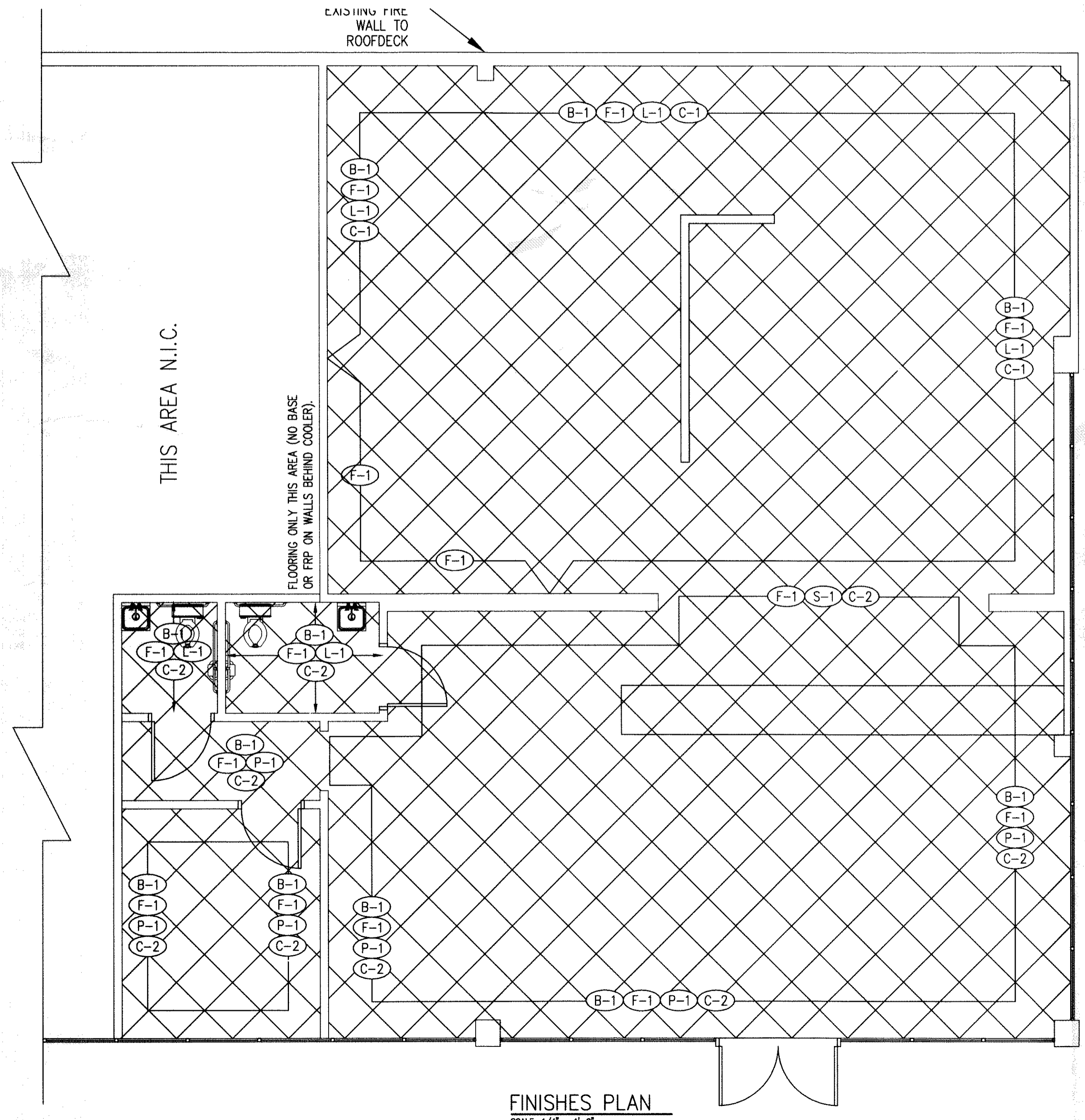
ROOM FINISH SPECIFICATIONS

- ALL WALLS TO RECEIVE "FRP" PANELS FROM FLOOR TO CEILING EXCEPT IN THE DINING AREA. INSTALL FRP WITH ALL TRIM AND ACCESSORIES, TO BE INSTALLED PER MANUFACTURER'S INSTRUCTIONS. PANELS TO BE MANUFACTURER BY "MARLITE CORPORATION" TO BE IVORY (P-140)
- SEE SHEET A-3 FOR FLOORING SCHEDULE.
- CEILING SHALL BE WASHABLE, HARD SURFACE VINYL FACED 24"x24" LAY-IN ACOUSTIC PANELS IN "STIPPLE" FINISH WITH EXISTING WHITE ALUMINUM "1" GRID SYSTEM. RESTROOM CEILING IS TO BE PAINTED.
- ALL DOORS, FRAMES AND WOOD TRIM SHALL BE PAINTED TWO COATS OF "SHERWIN WILLIAMS 6119 "ANTIQUE WHITE".
- ALL EXPOSED PARTITION ENDS AND CORNERS SHALL HAVE 5", STAINLESS STEEL CORNERS TO FLOOR. (NOT TOP OF COVE.)

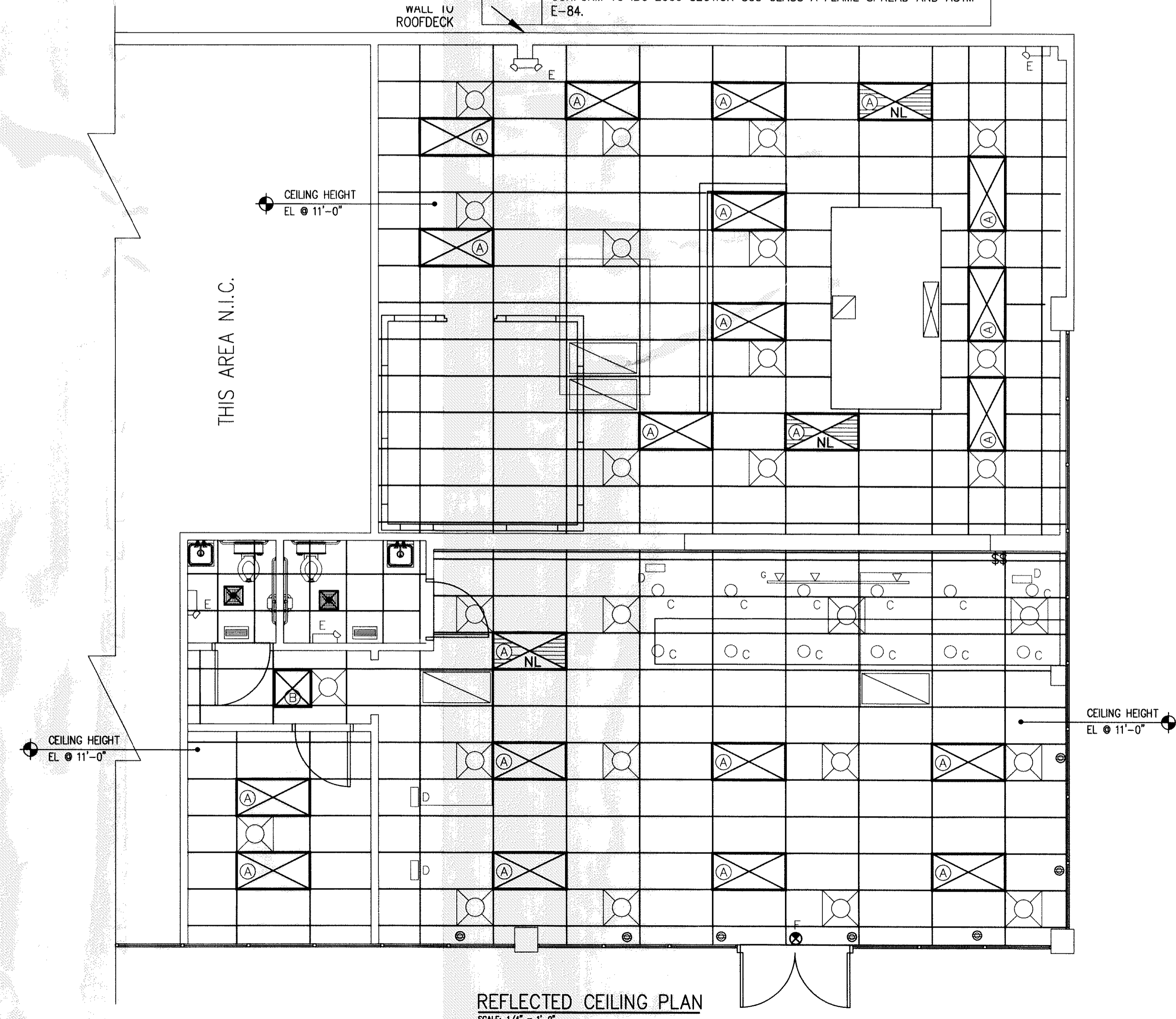
FINISH SCHEDULE

- (F-1) FLOOR TILE: INTERCERAMIC, FLAGSTONE SERIES, CORINTHIAN (12 1/2"x12 1/2"); GROUT TO MATCH HYDROMENT, "CASHMERE-HI-78"
 - (B-1) BASE TILE: INTERCERAMIC, FLAGSTONE SERIES, CORINTHIAN (6 1/4"x6 1/4"); SURFACE BULL NOSE TILE. GROUT TO MATCH HYDROMENT, "CASHMERE-HI-78"
 - (C-1) CEILING TILE: VINYL FACED 2'x4' GYP BOARD PANELS IN 1 5/8" WHITE COMMERCIAL GRADE GRID WITH STIPPLE FINISH.
 - (C-2) CEILING TILE: REUSE EXISTING CEILING TILES.
 - (L-1) LAMINATE: F.R.P. - MARLITE, "IVORY P140" 4'x10' PANELS W/MATCHING IVORY PVC TRIM. FROM BASE TO CEILING GRID.
 - (P-1) WALL PAINT: OVER TEXTURED DRYWALL - PORTER PAINTS #6700-2
 - (S-1) STONE VENEER: OWENS CORNING STONE - COUNTRY LEDGE STONE - COLOR, CARMEL. SEAL AS REQUIRED TO MEET LOCAL HEALTH DEPARTMENT APPROVAL.
- FOR FINISHES INFORMATION PLEASE CONTACT:
- WALL ART: CONSULT MARCO'S CIO NET/ART WORK FOR MOST CURRENT PRODUCT SHOTS.
- WALL MURAL: COORDINATE WITH MARCO'S CORPORATE. MURAL REQUIRES A PLYWOOD OR DRYWALL SUBSTRATE AND NO GLASS IS RECOMMENDED. MURAL FRAME TO BE SUPPLIED BY OWNER AND WILL BE A 3" WIDE WOODEN FRAME, PAINTED. FRAME COLOR: PIONITE SR520 RED.
- CLASS A FLAME SPREAD: ALL INTERIOR WALL AND CEILING FINISHES TO CONFORM TO IBC 2006 SECTION 803 CLASS A FLAME SPREAD AND ASTM E-84.

APPROVED
[Signature]



FINISHES PLAN
SCALE: 1/4" = 1'-0"



REFLECTED CEILING PLAN
SCALE: 1/4" = 1'-0"

DAMMON ENGINEERING, INC.
EMMETT DAMMON

ARCHITECT
ROBERT WILTSE

1095 FLORIDA AVENUE
SLIDELL, LA. 70458
985-649-5832

WEBSITE:
WWW.DAMMONENGINEERING.COM

EMAIL:
DAMMONENG@BELLSOUTH.NET

ARCHITECTURE
ENGINEERING
STUDIES
PLANNING
INVESTIGATION
EXPERT WITNESS

MARCO'S PIZZA TENANT BUILDOUT

532 GAUSE BLVD
SLIDELL, LA
70458

FINISHES AND CEILING PLAN

[Signature]

SCALE: AS NOTED
JOB#: 2083
DATE: 11-10-10
SHEET 4

A-3

OF 11