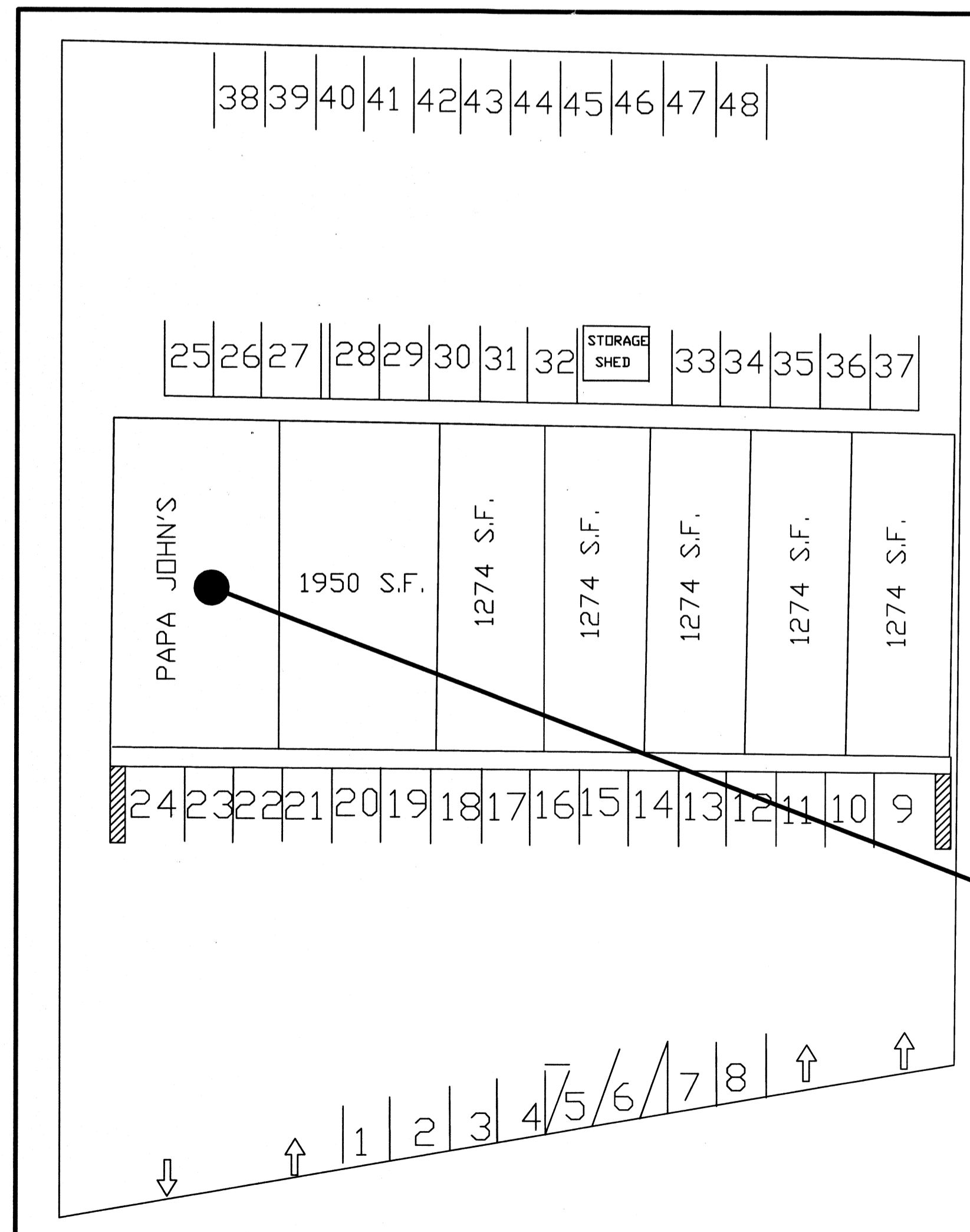




Better Ingredients.  
Better Pizza.

STORE LOCATION

3013 PONTCHARTRAIN DR.  
SLIDELL, LA 70458



SITE PLAN  
N.T.S.

NFPA 2009 CODE SUMMARY

TOTAL BUILDING AREA: 10,280 S.F.  
LEASE BUILDING AREA: 1,950 S.F.

OCCUPANCY CLASSIFICATION :  
GROUP M CLASS C (LESS THAN 50 OCCUPANTS AND LESS THAN 3,000 S.F.)  
2-HR SEPARATION PROVIDED

OCCUPANT LOAD (TABLE 7.3.1.2):  
KITCHENS= 100 GROSS SQ.FT. / OCCUPANT  
DINING = 15 NET SQ. FT. / OCCUPANT

KITCHEN/SERVICE AREA	1316 SQ. FT. =	13
DINING	360 SQ. FT. =	24
TOTAL		37

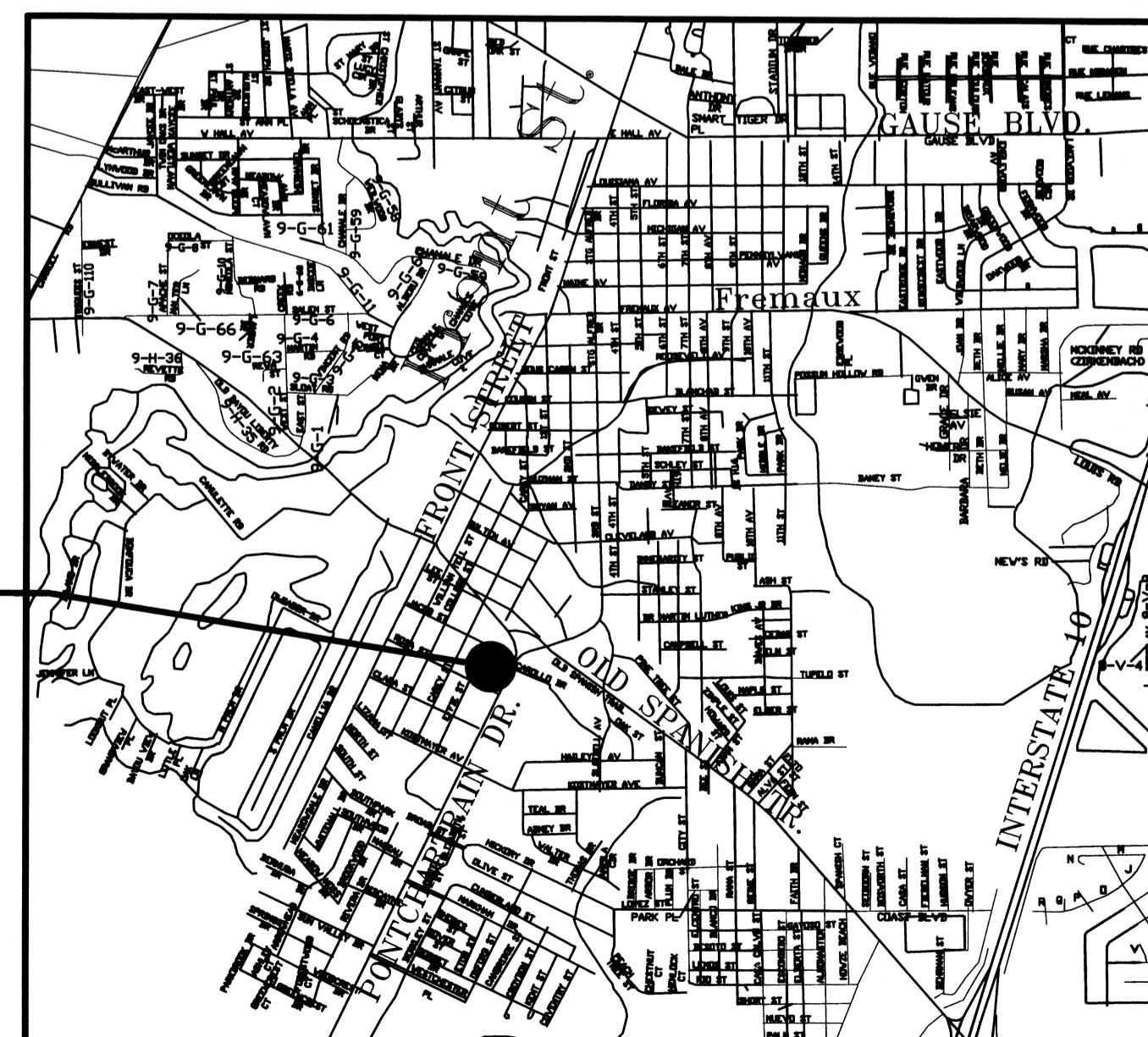
SPRINKLER SYSTEM: (36.3.5.1)  
NOT REQUIRED FOR LESS THAN 12,000 S.F. AND SINGLE STORY

EXIT ACCESS REQUIREMENTS: (36.2.4)  
EXIT REQUIRED FOR CLASS C SEC 36.2.4.3 (2 EXIT PROVIDED)  
ALLOWED EXIT ACCESS TRAVEL DISTANCE = 150' UNSPRINKLED (75' SINGLE EXIT)  
SUITE MAXIMUM TRAVEL DISTANCE : 51'-3"

FIRE ALARM SYSTEM REQUIREMENTS: (36.3.4.1)  
THIS MERCANTILE DOES NOT REQUIRE A FIRE ALARM SYSTEM IN ACCORDANCE WITH 36.3.4.1

SHEET INDEX

- TITLESHEET
- A-1 FLOOR PLAN
- A-2 EQUIPMENT PLAN
- A-3 FINISHED AND CEILING PLAN
- M-1 MECHANICAL PLAN
- M-2 MECHANICAL DETAILS
- M-3 HOOD DETAILS
- E-1 POWER & LIGHTING PLAN
- E-2 ELECTRICAL SCHEDULES
- P-1 PLUMBING PLAN
- P-2 PLUMBING DETAILS



VICINITY MAP  
N.T.S.

IBC 2009 CODE SUMMARY

TOTAL BUILDING AREA: 10,280 S.F.  
LEASE BUILDING AREA: 1,950 S.F.

OCCUPANCY CLASSIFICATION (SECTION 303.1):  
GROUP B (LESS THAN 50 OCCUPANTS A-2 EXCEPTION 1)

OCCUPANT LOAD (TABLE 1004.1.1):  
BUSINESS AREAS = 100 GROSS SQ.FT. / OCCUPANT  
1,950 SQ.FT. GROSS BUILDING = TOTAL OF 19 OCCUPANTS

BUILDING TYPE (SECTION 602.2) : 11B

FIRE RESISTANCE RATING REQUIREMENTS FOR BLDG. ELEMENTS: (TBL 601)  
STRUCTURAL FRAME= 0 HRS.  
BEARING WALLS (INTERIOR AND EXTERIOR)= 0 HRS.  
NON-BEARING WALLS= 0 HRS.  
FLOOR CONSTRUCTION= 0 HRS.  
ROOF CONSTRUCTION= 0 HRS.

FIRE RESISTANCE RATING REQUIREMENTS FOR EXTERIOR WALLS: (TBL 602)  
EXTERIOR WALLS WITH TO<=<30' FIRE SEPARATION DISTANCE = 0 HR.

SEPARATION OF OCCUPANCIES: (TBL 508.4)  
BETWEEN BUSINESS AND MERCANTILE 0 HRS

EXIT ACCESS REQUIREMENTS: (SEC 1016 & TBL 1021.2)  
EXIT REQUIRED FOR < 49 OCCUPANTS IN BUSINESS OCCUPANCY (2 EXITS PROVIDED)  
ALLOWED EXIT ACCESS TRAVEL DISTANCE = 200' UNSPRINKLED (75' SINGLE EXIT)  
SUITE MAXIMUM TRAVEL DISTANCE : 51'-3"

FIRE ALARM SYSTEM REQUIREMENTS: (SEC 907)  
THIS BLDG. DOES NOT REQUIRE A FIRE ALARM SYSTEM IN ACCORDANCE WITH SEC 907.2.2 & SEC 907.2.7

APPROVED  
WWW.LA.IBTS.ORG  
CERTIFIED 3RD PARTY PROVIDER  
LA.IBTS  
8/18/11

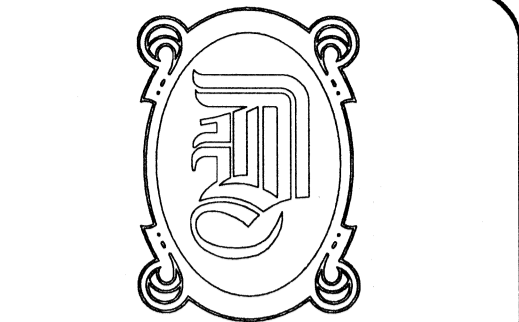
PROJECT DIRECTORY

FRANCHISEE: LAHOBA LLC  
(OWNERS)  
DBA: PAPA JOHN'S PIZZA  
1479 TOBIAS GADSON BLVD  
CHARLESTON, SC 29407  
CONTACT: HAROLD WOOD  
(980) 475-9398  
HHWFL@AOL.COM

FRANCHISER: PAPA JOHN'S INTERNATIONAL, INC.  
ATTN: CASEY KUFFNER  
P.O. BOX 99900  
LOUISVILLE, KY 40269-9990  
(502) 261-4241

LANDLORD: SAME AS OWNER

ARCHITECT: DAMMON ENGINEERING, INC. ROBERT WILTSE, CHIEF ARCHITECT  
554 OLD SPANISH TR.  
SLIDELL, LA 70458  
(985) 649-5832  
(985) 641-5950 FAX



DAMMON ENGINEERING, INC.  
EMMETT DAMMON

ARCHITECT  
ROBERT WILTSE

1095 FLORIDA AVENUE  
SLIDELL, LA. 70458  
985-649-5832

WEBSITE:  
WWW.DAMMONENGINEERING.COM

EMAIL:  
DAMMONENG@BELLSOUTH.NET

- ARCHITECTURE
- ENGINEERING
- STUDIES
- PLANNING
- INVESTIGATION
- EXPERT WITNESS

PAPA JOHN'S PIZZA  
TENANT BUILDOUT

3013 PONTCHARTRAIN DR.  
SLIDELL  
LOUISIANA  
70458

TITLE SHEET

*Robert Wiltse*

SCALE: AS NOTED

JOB #: 2119

8/12/2011

SHEET 1

TS-1

OF 10