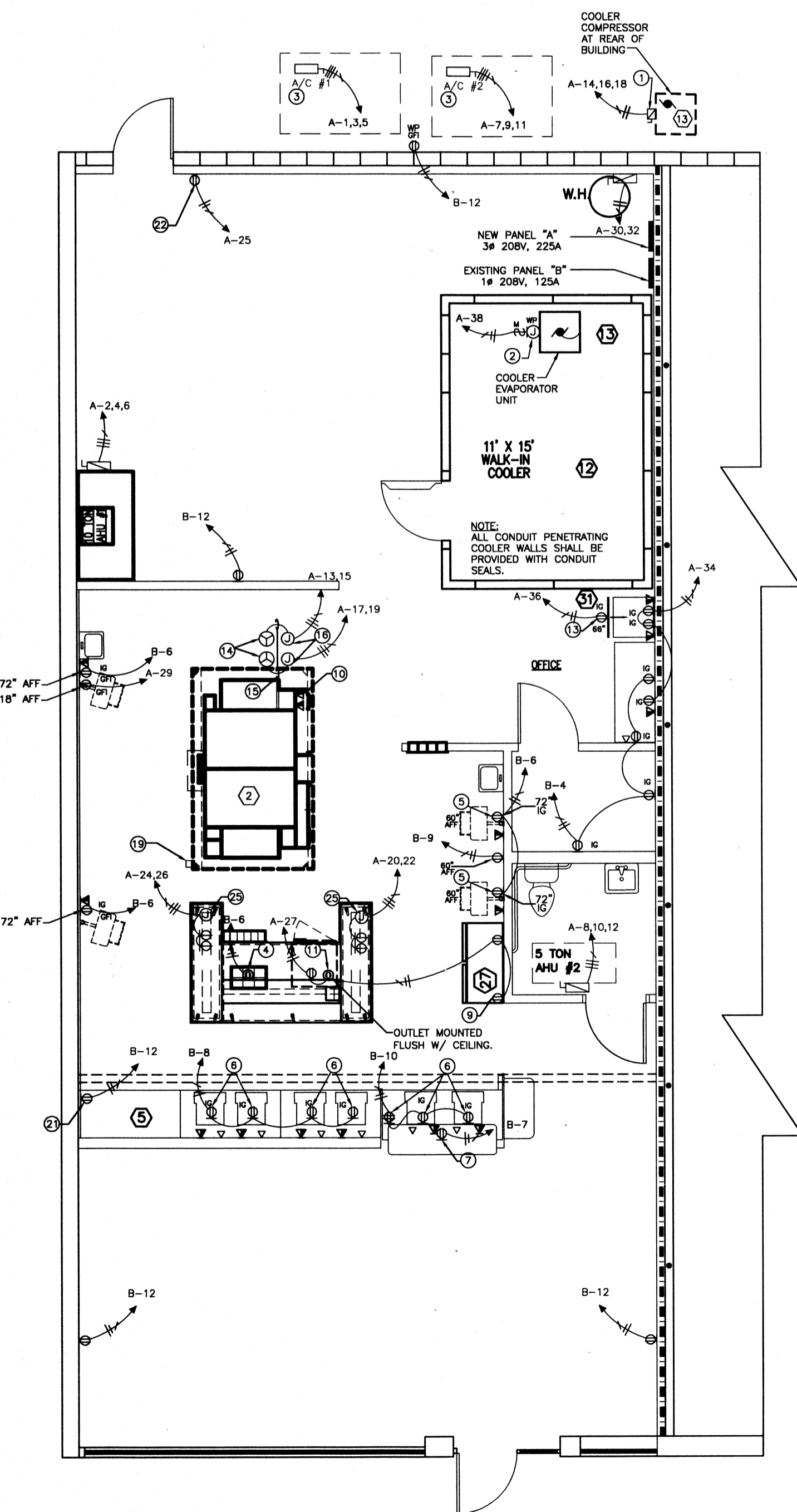


EQUIPMENT SCHEDULE	
MARK	ITEM
2	OVENHOOD
3	MAKELINE - VICTORY PT - 88 - S - PJ
4	48"X96" CUTTING/BOX TABLE W/ (2) HEAT SHELVES
5	TELEPHONE COUNTER W/ ADJUSTABLE SHELVES
12	COOLER
13	KOLD PACK SPLIT SYSTEM
27	CAN BEVERAGE COOLER AND DISPENSER
31	TELEPHONE SYSTEM

ELECTRICAL LEGEND	
	LIGHTING AND/OR APPLIANCE PANELBOARD - SURFACE MOUNTED.
	FLUORESCENT LIGHTING FIXTURE - LETTER REFERS TO FIXTURE TYPE REFER TO LIGHT FIXTURE SCHEDULE.
	DISCONNECT SWITCH
	MOTOR OUTLET
	JUNCTION BOX OR OUTLET BOX CONCEALED ABOVE CEILING
	WALL OR CEILING MOUNTED EMERGENCY EXIT LIGHT
	EXTERIOR LIGHTING
	WALL MOUNTED DUAL LAMP 90 MIN. EMERGENCY LIGHT W/BATTERY PACK
	ELECTRIC SMOKE DETECTOR
	DUPLEX OUTLET 20 A. 125 VOLT RECEPTACLE. MOUNT AT 18" A.F.F. TO CENTER, UNLESS NOTED OTHERWISE.
	DOUBLE DUPLEX OUTLET, RECESSED IN CEILING
	TELEPHONE OUTLET
	COMPUTER DATA CONNECTION. E.C. SHALL VERIFY NUMBER OF DATA DROPS AND EXACT LOCATION OF DATA DROPS WITH OWNER PRIOR TO ROUGH-IN.
	BELL AND TRANSFORMER
	DOOR BELL BUTTON
	NUMBER IN HEX SYMBOL REFERS TO EQUIPMENT SPECIFIED IN EQUIPMENT SCHEDULE - SEE SHEET A-2.
	1P, 20AMP 125 VOLT MOTOR RATED TOGGLE SWITCH WITH WEATHER PROOF ENCLOSURE.
	SINGLE POLE SWITCH
	THREE-WAY SWITCH
	SPECIAL RECEPTACLE
	WEATHERPROOF
	GROUND FAULT INTERRUPTOR
	ISOLATED GROUND
	MOUNTING HEIGHT ABOVE FINISH FLOOR
	NIGHT LIGHT
	ELECTRICAL CONTRACTOR
	KITCHEN EQUIPMENT SUPPLIER
	FULL VOLTAGE NON REVERSING
	INDICATES CONDUIT RUN CONCEALED IN WALLS OR ABOVE CEILING. TICK MARKS INDICATE WIRES - LONG LINES INDICATE PHASE CONDUCTORS. WIRE SIZES ARE #12 AWG UNLESS NOTED OTHERWISE.
	CONDUIT BARS INDICATE CONDUCTORS
	PHASE (HOT)
	NEUTRAL (GROUND)
	EQUIPMENT GROUNDING

LIGHT FIXTURE SCHEDULE				
MARK	DESCRIPTION	LAMP	MODEL NO.	MANUF.
A	2X4 LAY-IN FLUORESCENT WITH ELECTRONIC BALLAST	(3) F32-T8 3500K	2SP-G-3-32-FW-A12125-120-GE8	LITHONIA
A1 NIGHT LIGHT	2X4 LAY-IN FLUORESCENT WITH ELECTRONIC BALLAST	(3) F32-T8 3500K	2SP-G-2-32-FW-A12125-120-GE8	LITHONIA
A2	2x2 SURFACE MOUNT FLUORESCENT WITH ELECTRONIC BALLAST	(2) F32-T8 3500K	2SP-G-2-32-FW-A12125-120-GE8	LITHONIA
B	EXISTING/RELOCATED FAN/LIGHT COMBINATION	(1) 100W	751	BROAN
C	WALL MOUNTED BRACKET	1 - 28W DTT	WPCW2DTT-120	LITHONIA
D	EMERGENCY DUAL LAMP EXIT LIGHT W/BATTERY BACK-UP	2 - 5.4W AC, 6V DC	HQMSW1R120/277	LITHONIA
E	EMERGENCY DUAL LAMP W/BATTERY BACK-UP, INSTALL 84" A.F.F.	HIT 5.4W	ELM2	LITHONIA
E1	EMERGENCY BATTERY BACKUP, REMOTE CAPABILITY FOR 24W/90 MIN. MOUNT ABOVE INTERIOR-SIDE OF DOOR.	N/A	6ELM2PRO	LITHONIA
F	EMERGENCY EGRESS OUTDOOR REMOTE HEAD, MOUNT ABOVE DOOR.	2-8W HIT	ELAWTNXH0806	LITHONIA
G	4 FT. FLUORESCENT WALL/CEILING BRACKET W/ WET LOCATION LISTING.	2 - 32W T8	DMW-2-32-120-CW	LITHONIA



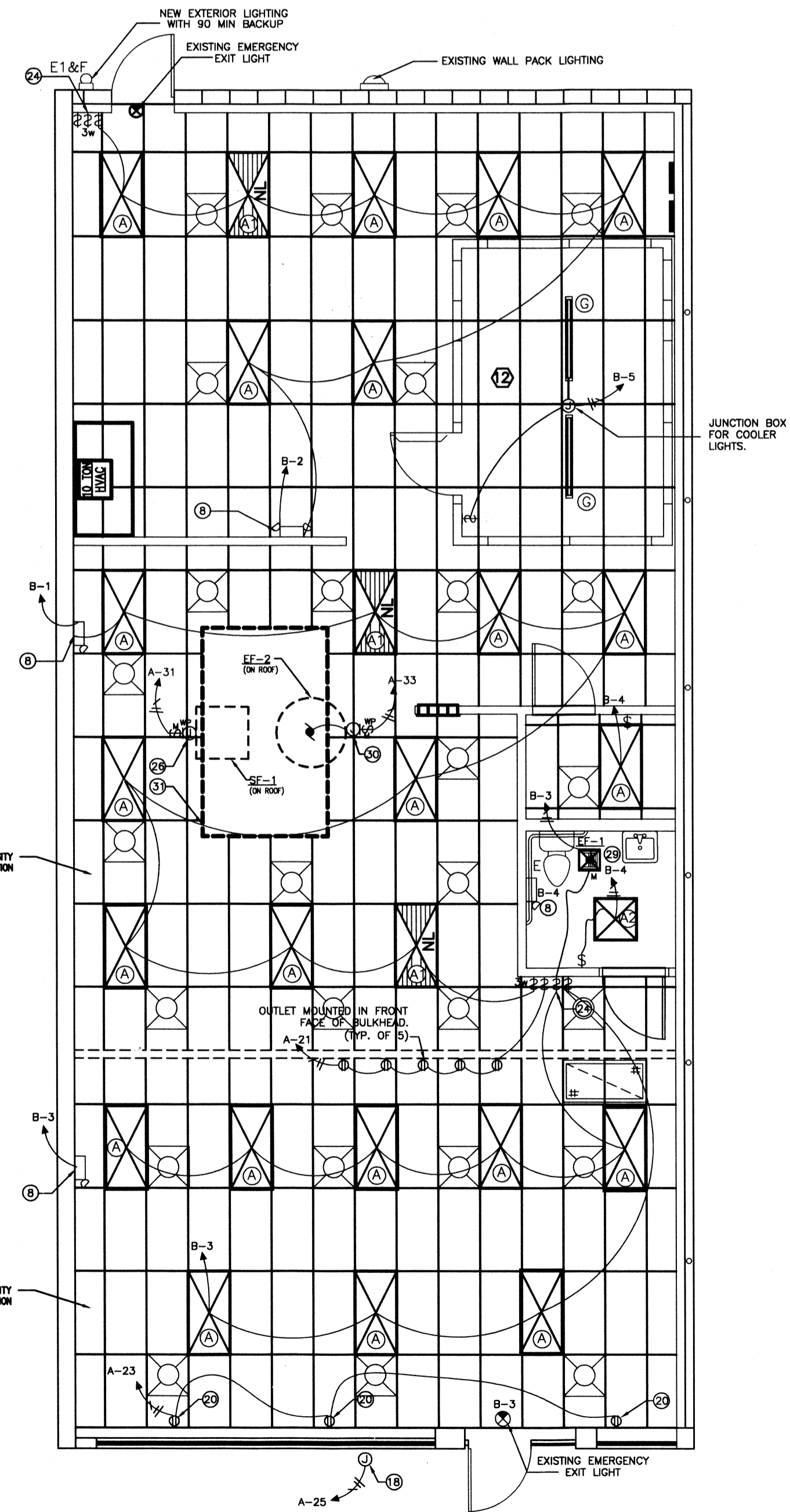
POWER PLAN
SCALE: 3/16" = 1'-0"

ELECTRICAL NOTES:

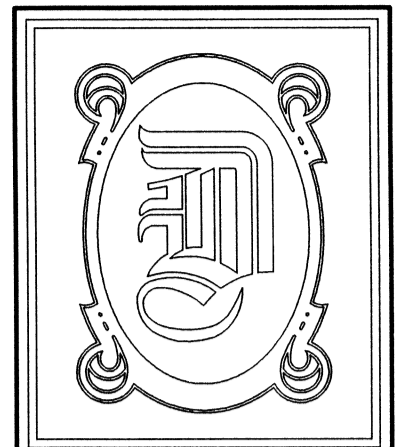
- ALL WORK SHALL CONFORM TO THE LATEST EDITION OF THE NATIONAL ELECTRICAL CODE, THE GOVERNING ELECTRICAL CODE, AND ALL OTHER INSPECTION DEPARTMENTS HAVING JURISDICTION. OBTAIN CERTIFICATES OR APPROVAL WHERE REQUIRED.
- ALL MATERIALS FURNISHED SHALL BE NEW AND SHALL BE U.L. LISTED.
- THE DRAWINGS INDICATE SIZE AND GENERAL LOCATION OF WORK. SCALE DIMENSIONS SHALL NOT BE USED. THE EXACT LOCATION AND ELEVATION OF ALL LIGHTING FIXTURES, RECEPTACLES AND TELEPHONE OUTLETS, ETC. SHALL BE DETERMINED BY ACTUAL CONDITIONS IN THE FIELD, UNLESS NOTED OTHERWISE.
- PRIOR TO BIDDING, CONTRACTOR SHALL VISIT THE JOB SITE AND FAMILIARIZE THEMSELVES WITH THE EXISTING CONDITIONS.
- ELECTRICAL CONTRACTOR SHALL COORDINATE HIS WORK WITH OTHER TRADES AND WITH OTHER CONTRACTORS WHOSE WORK MAY AFFECT THIS INSTALLATION.
- ELECTRICAL CONTRACTOR SHALL COORDINATE INCOMING ELECTRICAL SERVICE WITH UTILITY COMPANY AND INCLUDE IN HIS BID ALL CHARGES AND FEES INCURRED IN MODIFICATIONS.
- WHERE MORE THAN ONE SWITCH OCCURS IN THE SAME LOCATION, THEY SHALL BE INSTALLED IN A GANG TYPE BOX UNDER ONE COVER PLATE.
- ELECTRICAL CONTRACTOR SHALL COORDINATE THE TELEPHONE INSTALLATION WITH THE TELEPHONE COMPANY AND THE GENERAL CONTRACTOR.
- ELECTRICAL CONTRACTOR, BEFORE INSTALLING ANY OF THE WORK, SHALL SEE THAT IT DOES NOT INTERFERE WITH CLEARANCES REQUIRED FOR FINISHED COLUMNS, HUNG CEILINGS, PLASTER, PARTITIONS, WALLS, ETC. AS SHOWN IN THE ARCHITECTURAL DRAWINGS AND DETAILS. IF ANY WORK IS INSTALLED AND IT LATER DEVELOPS THAT SUCH DETAILS OR DESIGN CANNOT BE FOLLOWED, THE CONTRACTOR, AT HIS OWN EXPENSE, SHALL MAKE SUCH CHANGES IN THE WORK AS DIRECTED BY THE ARCHITECT. AS WELL AS TO PERMIT THE INSTALLATION OF THE ARCHITECTURAL WORK AS SHOWN ON THE PLANS AND DETAILS.
- PERFORM TEST REQUIRED BY THE OWNER OR THE ENGINEER IN CONNECTION WITH THE OPERATION OF THE ELECTRICAL SYSTEM IN THE BUILDING.
- ALL TESTS SHALL BE MADE IN ACCORDANCE WITH THE LATEST STANDARD OF THE IEEE AND THE NATIONAL ELECTRICAL CODE.
- MINIMUM CONDUCTOR SIZE SHALL BE #12, 600V INSULATION. MINIMUM SIZE CONDUIT SHALL BE 3/4" EMT FOR INTERIOR USE, AND 3/4" RIGID ALUMINUM FOR EXTERIOR USE. EXTERIOR FITTINGS SHALL BE CAST BOXES AND COVERS. INTERIOR FITTINGS SHALL BE CAST WHERE EXPOSED ON WALLS. STAMPED BOXES MAY BE USED ABOVE CEILINGS IN AIR CONDITIONED SPACES.
- CONTRACTOR SHALL INSTALL WIRING AND OTHER CIRCUIT COMPONENTS TO MATCH EQUIPMENT ACTUALLY INSTALLED.
- INSTALL GROUND FAULT RECEPTACLES AT RECEPTACLE LOCATIONS WITHIN 5' OF SINKS OR LAVATORIES, AND AT EXTERIOR LOCATIONS. EXTERIOR RECEPTACLES SHALL ALSO BE WEATHERPROOF.
- BONDING AND GROUNDING SHALL BE IN ACCORDANCE WITH NFPA 70:230-63, NFPA 250-23, 250-71, & 250-72.
- GROUND NEUTRAL IN ACCORDANCE WITH NFPA 70:250-23b.
- FUSES SHALL BE ITC CLASS K5, 250 VOLT, 200,000 AMP INTERRUPTING CAP.
- PROVIDE SERVICES OF A FIRE/SMOKE DETECTION & ALARM COMPANY TO DESIGN & INSTALL ALARM SYSTEM TO MEET REQUIREMENTS OF THE STATE FIRE MARSHALL. INSTALL CO2 DETECTOR AS SHOWN ON PLANS.
- ALL ELECTRICAL, MECHANICAL & PLUMBING PENETRATING FIRE PARTITIONS SHALL BE FIRE CAULKED. (PENETRATIONS THROUGH RATED CONSTRUCTION SHALL BE SEALED WITH A MATERIAL CAPABLE OF PREVENTING THE PASSAGE OF FLAMES AND HOT GASES WHEN TESTED IN ACCORDANCE WITH ASTM-E814.)
- EXTERIOR LIGHTING SHALL BE SHADED OR INWARDLY DIRECTED IN SUCH A MANNER SO THAT NO DIRECT LIGHTING OR GLARE IS CAST BEYOND THE PROPERTY LINE. THE INTENSITY OF SUCH LIGHTING SHALL NOT EXCEED ONE FOOT CANDLE AS MEASURED AT THE ADJUTING PROPERTY LINE.
- SEE ELECTRICAL GENERAL NOTES ON SHEET E-2.

ELECTRICAL SHEET NOTES:

- 3P, 30AMP, 240V, NEMA 3R FUSIBLE DISCONNECT SWITCH FOR CONNECTION TO COOLER COMPRESSOR, FUSE PER UNIT NAME PLATE.
- JUNCTION BOX WITH MOTOR RATED TOGGLE SWITCH IN WEATHER PROOF ENCLOSURE, FOR CONNECTION TO EVAPORATOR UNIT.
- INSTALL NEMA 3R, 3P 240V FUSIBLE DISCONNECT(S) RATED FOR SYSTEM INSTALLED. FUSE PER UNIT NAME PLATE.
- ONE (1) TWIST-LOCK OUTLET IN CEILING WITH TWIST-LOCK STRAIN-RELIEF DROP CORD TERMINATING 12" BELOW CUT TABLE HEIGHT IN A SINGLE STANDARD 3-PRONG GROUNDED OUTLET, OUTLET AND CORD SHALL BE PLACED AT THE SAME LOCATION AS THE OUTLETS FOR THE CUT-TABLE HEAT STRIPS.
- MOUNT RECEPTACLE JUST BELOW SHELF HEIGHT. REFER TO ARCHITECTS DRAWINGS FOR SHELF HEIGHT. RECEPTACLE AND COMPUTER CONNECTION SHALL BE STACK MOUNTED.
- MOUNT RECEPTACLE UNDER COUNTER TOP AS HIGH AS POSSIBLE.
- DUPLEX RECEPTACLE FOR CONNECTION TO PAPA JOHN'S LOGO LED LIGHTS. MOUNT RECEPTACLE UNDER COUNTER TOP AS HIGH AS POSSIBLE. E.C. SHALL VERIFY EXACT LOCATION WITH OWNER PRIOR TO ROUGH-IN.
- VERIFY WITH OWNER EXACT LOCATION AND MOUNTING HEIGHT OF EMERGENCY EGRESS LIGHTING ABOVE DOOR AND PLATE GLASS.
- ELECTRICAL CONTRACTOR SHALL INSTALL DUPLEX RECEPTACLE 6" BELOW LAY-IN CEILING AND 15" RADIUS MINIMUM FROM GAS-FIRED OVEN FOR CONNECTION TO CARBON MONOXIDE DETECTOR. GENERAL CONTRACTOR SHALL PROVIDE AND INSTALL DETECTOR.
- INSTALL 2 DATA PORTS FOR OVENS.
- ONE (1) TWIST-LOCK OUTLET IN CEILING WITH TWIST-LOCK STRAIN-RELIEF DROP CORD TERMINATING 12" BELOW CUT-TABLE. ELECTRICAL CONTRACTOR SHALL INSTALL JUNCTION BOX UNDER CUT-TABLE AND NEXT TO REFRIGERATION UNIT. FIELD VERIFY EXACT MOUNTING LOCATION AND CONNECTION REQUIREMENTS PRIOR TO ROUGH-IN.
- MOUNT ON UNIT.
- TELEPHONE SYSTEM FURNISHED BY PHONE CONTRACTOR MOUNT ON 24"x24"x3/4" PLYWOOD BACKBOARD. BOTTOM OF BACKBOARD AT 72" A.F.F. BACKBOARD BY ELECTRICAL CONTRACTOR.
- HUBBELL #2413 AND HUBBELL #2411.
- (4) #12 AWG DROP CORDS TO PIZZA OVEN RECEPTACLE. CONNECTED TO JUNCTION BOX AT CEILING. DO NOT ROUTE THROUGH SUSPENDED CEILING TILE.
- ELECTRICAL CONTRACTOR SHALL INSTALL JUNCTION BOX BELOW SUSPENDED CEILING AND MAKE HARD WIRE CONNECTION TO TYPE SO CORD DROP TO PIZZA OVEN RECEPTACLE. PROVIDE STRAIN RELIEF FOR CONNECTION AT JUNCTION BOX. FIELD VERIFY EXACT MOUNTING LOCATION AND CONNECTION REQUIREMENTS PRIOR TO ROUGH-IN.
- JUNCTION BOX FOR CONNECTION TO AWNING LIGHTING. FIELD VERIFY EXACT MOUNTING LOCATION AND CONNECTION REQUIREMENTS PRIOR TO ROUGH-IN.
- JUNCTION BOX FOR CONNECTION TO PAPA JOHN'S SIGN. FIELD VERIFY EXACT MOUNTING LOCATION AND CONNECTION REQUIREMENTS PRIOR TO ROUGH-IN.
- START/STOP SWITCH WITH PILOT LIGHT FOR EF-2 AND SF-1. PROVIDE WIRING AS REQUIRED.
- DUPLEX RECEPTACLE INSTALLED FLUSH IN CEILING FOR WINDOW SIGNAGE. COORDINATE EXACT LOCATION WITH OWNER PRIOR TO ROUGH-IN.
- DUPLEX RECEPTACLE INSTALLED FLUSH IN CEILING FOR CCTV MONITOR/CAMERA. COORDINATE EXACT LOCATION WITH OWNER PRIOR TO ROUGH-IN.
- TIME CLOCK FOR LIGHTS AND SIGNAGE SHALL BE FOUR POLE, 7 DAY TIMER WITH QUARTZ CARRY-OVER, PARAGON MODEL NO. 7007-00 OR EQUAL.
- JUNCTION BOX WITH MOTOR RATED TOGGLE SWITCH FOR 120VAC CONNECTION TO HOOD SUPPRESSION CONTROL PANEL. ELECTRICAL CONTRACTOR SHALL VERIFY EXACT MOUNTING LOCATION AND CONNECTION REQUIREMENTS WITH HOOD SUPPLIER PRIOR TO ROUGH-IN.
- PROVIDE COMMERCIAL GRADE 20 AMP LIGHT SWITCHES. SWITCH BANK FOR CONTROL OF INTERIOR LIGHT FIXTURES. ELECTRICAL CONTRACTOR SHALL COORDINATE LOCATION WITH OWNER PRIOR TO ROUGH-IN.
- ELECTRICAL CONTRACTOR SHALL INSTALL JUNCTION BOX BELOW SUSPENDED CEILING AND MAKE HARD WIRE CONNECTION TO TYPE SO CORD DROP TO HEAT STRIP RECEPTACLE. PROVIDE STRAIN RELIEF FOR CONNECTION AT JUNCTION BOX. FIELD VERIFY EXACT MOUNTING LOCATION AND CONNECTION REQUIREMENTS PRIOR TO ROUGH-IN.
- JUNCTION BOX WITH MOTOR RATED TOGGLE SWITCH IN NEMA 3R ENCLOSURE FOR CONNECTION TO SUPPLY FAN. FIELD VERIFY ELECTRICAL REQUIREMENTS WITH HOOD SUPPLIER.
- NEW THREE PHASE METER SOCKET WITH NEW 3P 208V 225A TENANT SERVICE DISCONNECT SWITCH.
- NEW TENANT SPACE FEEDER. E.C. SHALL CONNECT NEW FEEDER TO NEW ELECTRICAL PANEL AND MAKE FINAL CONNECTION.
- EXHAUST FAN SHALL BE CONNECTED TO THE LIGHT SWITCH FOR THE DINING ROOM.
- JUNCTION BOX WITH MOTOR RATED TOGGLE SWITCH IN NEMA 3R ENCLOSURE FOR CONNECTION TO EXHAUST FAN. FIELD VERIFY ELECTRICAL REQUIREMENTS WITH HOOD SUPPLIER.
- RELOCATE HOOD FAN CONTROL TO WALL LOCATION AS DIRECTED BY G.C.



LIGHTING PLAN
SCALE: 3/16" = 1'-0"



DAMMON ENGINEERING, INC.

CHIEF ENGINEER
EMMETT DAMMON, P.E.

CHIEF ARCHITECT
ROBERT WILTSE

554 OLD SPANISH TRAIL
SLIDELL, LA. 70458
OFFICE: 985-649-5832
FAX: 985-641-5950

WEBSITE:
WWW.DAMMONENGINEERING.COM

EMAIL:
DAMMONENG@BELLSOUTH.NET

- ARCHITECTURE
- ENGINEERING
- STUDIES
- PLANNING
- INVESTIGATION
- EXPERT WITNESS

PAPA JOHN'S
PIZZA
TENANT
BUILDOUT

3013 PONTCHARTRAIN DR.
SLIDELL
LOUISIANA

70458
APPROVED [Signature] 8/13/11

POWER
AND
LIGHTING
PLAN

REV: [Handwritten notes]

SCALE: AS NOTED

JOB#: 2119

DATE: 8/12/2011

SHEET 7

E-1

OF 10