



New Brick Lobby “Frequently Asked Questions”

Q) Can I only install the counter and still be eligible for the rebate?

A) If your lobby does not have space for any of the décor items, the front counter would qualify you for the Rebate. If your lobby has space for décor items, you would need to install all, or as many décor items as space permits. Décor items would include any or all of the following; Wall Banners over Brick, Montage, and Camaro Plaque.

Q) When does the rebate start?

A) Once you have a store-specific order placed with an approved vender and a 50% deposit is made. The rebate will start on the first day of the period following the period you made your deposit.

Q) Can I install my montage over “FRP” or do I need to remove my “FRP” and install the montage over painted drywall?

A) The preferred method is to install the montage over painted drywall. There is an option to clean, prime and paint the “FRP” red and install the montage directly on the “FRP”. The vinyl needed to install on “FRP” is a special vinyl and is about \$2.50 more per square foot than the vinyl used for drywall.

Q) Where do the paint and brick finishes stop if I don’t have a bulkhead?

A) The paint and brick will stop at the front edge of your stainless steel tables that run parallel to your front counter. The front edge of the tables also line up with the top corner of your stainless wall panel. The brick or paint will also stop at the stainless steel wall panel.

Q) What is the minimum standard for the new lobby enhancement?

A) The size of your lobby will determine what the minimum standard is for your location. The brick counter would be required in every store (minimum standard). If your lobby is large enough to fit all décor Items, then all décor items will be required. The ideal lobby would consist of the following; (3) banners over new brick wall, (1) camaro plaque, (1) brick counter, (1) montage.

Q) How do I get the National Pricing from Sherwin Williams on my paint?

A) Papa John’s has a cash account number (#3771-73695) with Sherwin Williams that must be presented when placing your paint order.

Q) What if I have an endcap store with glass down the side, do I need to install the brick wall?

A) No, you would install the montage over “Roma Red” paint on drywall or “FRP”.

Q) Do I need to paint my White “FRP” and remove the existing Red and Green stripe?

A) Yes, you will need to paint all the “FRP” behind your counter with the “Spring Wheat” epoxy paint formula. The existing “FRP” will need to be cleaned and primed before painting. The White “FRP” in the lobby will be removed and/or painted “Roma Red” or “Spring Wheat” depending on the décor used for your store.

Q) Can I still use the old printed canvas camaro from the yellow package?

A) Yes, but we prefer that you not use it next to or combined with the new décor items.

New Brick Lobby

“Frequently Asked Questions”

Q) Do I have to move my Coke Cooler from the lobby?

A) If possible, you will need to move the Coke cooler adjacent to the drivers table. In some locations this is not possible due to store size or current operational needs. It is not the intent to disrupt store operations with the lobby décor. However, the coke cooler should not be used as an excuse not to install décor items.

Q) Can I install brick with out putting up a Montage?

A) The montage is the key décor item and the priority, however, there may be instances where space does not allow for a montage but does allow for brick. This is the exception, not the standard.

Q) Can I install brick over “FRP”?

A) Yes, the trim strip between the “FRP” panels will need to be removed to lay the brick panel flush against the “FRP” panel.

Q) If my menu board is hanging on the wall, can I install the montage below it?

A) Yes, you will need to install the 6’X6’ montage.

Q) Can I install my menu board over the new brick wall?

A) Yes, however you can not install banners under the menu board.

Q) What color do I paint my walls? Kitchen Walls, Montage Wall, and Front Wall?

A) The Kitchen Walls will be painted “Spring Wheat” with epoxy paint and primer. The Montage Wall will be painted “Roma Red”. The front wall of the store will typically be painted “Spring Wheat”.









SHERWIN WILLIAMS.

PAPA JOHN'S PAINT SPECIFICATIONS AND PRICING

PAPA JOHN'S CASH ACCOUNT #3771-73695

20% OFF ALL STORE ITEMS: BRUSHES, ROLLERS, TAPE, ETC.

PRODUCT	COLOR	SIZE	DESCRIPTION	RETAIL PRICE	PAPA'S PRICE
YELLOW PACKAGE PAINT					
K46W00151	"FRP" IVORY	1 GAL	PRE-CATALYZED SEMI-GLOSS EPOXY	\$52.26	\$35.26
NOTE: EPOXY COATING FOR YELLOW PACKAGE INTERIOR "FRP"					
B51W00050	WHITE	1 GAL	ADHESION PRIMER	\$50.99	\$24.81
NOTE: PRIMER COAT FOR ALL INTERIOR "FRP"					
BRICK PACKAGE PAINT					
B51W00050	WHITE	1 GAL	ADHESION PRIMER	\$50.99	\$24.81
NOTE: PRIMER COAT FOR ALL INTERIOR "FRP" OR DRYWALL					
A97R1258	"ROMA RED"	1 GAL	DUR HOME SA R RED	\$51.49	\$33.00
NOTE: "ROMA RED" IS THE BACKGROUND FOR THE MONTAGE OVER DRYWALL					
A97R1251	"SPRING WHEAT"	1 GAL	DUR HOME SA EXTRA	\$51.49	\$33.00
NOTE: "SPRING WHEAT" LOBBY ACCENT OVER DRYWALL					
K46T154	"ROMA RED"	1 GAL	PRE-CATALYZED SEMI-GLOSS EPOXY	\$52.26	\$35.26
NOTE: "ROMA RED" IS THE BACKGROUND FOR THE MONTAGE OVER "FRP"					
K46W151	"SPRING WHEAT"	1 GAL	PRE-CATALYZED SEMI-GLOSS EPOXY	\$52.26	\$35.26
NOTE: "SPRING WHEAT" LOBBY ACCENT OVER "FRP"					
EXTERIOR PAINT					
A89W01151	SEE NOTE	1 GAL	SUPERPAINT EXTERIOR LATEX SATIN	\$45.99	\$26.70
NOTE: EXTERIOR LATEX SATIN FOR CHINA WHITE, NATURAL WHITE, WARM GRAY, AND DARK GREEN					
B51W00020	WHITE	1 GAL	PREPRITE LATEX PRIMER/SEALER	\$35.49	\$23.01
NOTE: PRIMER FOR CHINA WHITE, NATURAL WHITE, WARM GRAY, AND DARK GREEN					
PAINT CODES BELOW ARE FOR THE BRICK LOBBY AND BACK OF HOUSE "FRP"					
SHERWIN-WILLIAMS Sher-Color (tm) Order# 02/24/11 1934-0022959 INTERIOR ARCHITECTURAL PRO INDUSTRIAL PRECAT EPOXY SEMI-GLOSS COROB D600 PAPAJOHNS ROMA RED EPOXY CUSTOM MANUAL MATCH BAC COLORANT 0Z 32 64 128 W1-White - 29 - - R2-Maroon - 39 - - R3-Magenta 2 34 - - R4-New Red 6 31 1 1 B1-Black - 3 - - ONE GALLON ULTRADEEP 650044860 K46T00154	SHERWIN-WILLIAMS Sher-Color (tm) Order# 02/24/11 1934-0022959 INTERIOR ARCHITECTURAL PRO INDUSTRIAL PRECAT EPOXY SEMI-GLOSS COROB D600 PAPAJOHNS SPRING WHEAT EPOXY CUSTOM MANUAL MATCH BAC COLORANT 0Z 32 64 128 B1-Black - 1 1 - N1-Raw Umber - 11 1 1 Y3-Deep Gold - 23 - - ONE GALLON EXTRA WHITE 650044795 K46W00151	SHERWIN-WILLIAMS Sher-Color (tm) Order# 02/24/11 1934-0022959 INTERIOR ARCHITECTURAL DURATION HOME LATEX SATIN COROB D600 PAPAJOHNS ROMA RED CUSTOM MANUAL MATCH BAC COLORANT 0Z 32 64 128 B1-Black - 2 - - G2-New Green - 1 1 1 R3-Magenta 10 60 1 1 ONE GALLON REAL RED 650187693 A97R01258	SHERWIN-WILLIAMS Sher-Color (tm) Order# 02/24/11 1934-0022959 INTERIOR ARCHITECTURAL DURATION HOME LATEX SATIN COROB D600 PAPAJOHNS SPRING WHEAT CUSTOM SHER-COLOR MATCH BAC COLORANT 0Z 32 64 128 B1-Black - - 1 - N1-Raw Umber - 14 1 - Y3-Deep Gold - 23 1 1 ONE GALLON EXTRA WHITE 650096509 A97W01251		
Non Returnable Tinted Color <small>CAUTION: To assure consistent color, always order enough paint to complete the job and intermix all containers of the same color before application. Mixed colors may vary slightly from color strip or color chip.</small>  0022959-001	Non Returnable Tinted Color <small>CAUTION: To assure consistent color, always order enough paint to complete the job and intermix all containers of the same color before application. Mixed colors may vary slightly from color strip or color chip.</small>  0022959-002	Non Returnable Tinted Color <small>CAUTION: To assure consistent color, always order enough paint to complete the job and intermix all containers of the same color before application. Mixed colors may vary slightly from color strip or color chip.</small>  0022959-006	Non Returnable Tinted Color <small>CAUTION: To assure consistent color, always order enough paint to complete the job and intermix all containers of the same color before application. Mixed colors may vary slightly from color strip or color chip.</small>  0022959-005		
"FRP" ROMA RED K46T154	"FRP" SPRING WHEAT K46W151	"DRYWALL" ROMA RED A97R1258	"DRYWALL" SPRING WHEAT A97W1251		

Nichiha Wall Panel Installation Overview

Interior Application Only-Brick ACCENT Wall- Papa John's

Preparation

- Identify each location of the wall studs then mark the position from wall bottom to top to ensure proper panel clip location
- Before you install your first run of Brick to the wall, you will have to determine the height it will need to be (horizontally) cut down too. You want the mortar joints on the wall Brick, to line up with the Brick already install on the Front Counter Wall Section.
- Once this is determined make your (horizontal cut) and start your install. You must be level, and you will secure the bottom run thru the mortar joint at the bottom. (be sure and countersink so you can dab caulking over the screw head. Be sure and put a 3/16" spacer behind the brick where you screw thru into the studs. (use the metal clips on the top, preparing for your next run.)

Panel Installation

- Layout the first and second row of panels to provide the proper pattern appearance for the wall- staggered.
- Trim off the left side "ship-lapped edge" of the panel, so that panel will fit tightly against the left trim area. Use the S/S angle trim to guidance during installation.
- Set the first panel on the floor and attach using a panel clip at top horizontal edge of panel at each stud, working from left to right. Tapping panels down and to the left for a tight seam fit. Bugle (cone shape) head fasteners will seat down into the center set of holes in the panel clip for best performance.
- A rubber mallet or short block of wood can be used to seat the panel firmly in place and tighten to the left. Do not hammer directly anywhere on the panels as direct contact may cause cracks, gouges or chipping.
- Place a long "joint" clip at the top of all vertical ship lap panel joint. Place at the bottom of the vertical ship lap joint a regular panel clip half way between both Nichiha panels. This clip acts as a "stabilizer" to hold the bottom corners of the panels in-line with each other and the panel below. Verify first course of panels is level and seams are tight.
- When installing the 2nd row of Nichiha panels, you will need to cut off approximately 18" to 24" of the left of the panel in order to create a staggered pattern and match the mortar joint of the brick 2 rows below.
- Continue using appropriate clips on the top edge of panel as the work proceeds from the bottom of the wall to the top, moving left to right along the row.
- Continue installing full Nichiha panels left to right and cutting the left and right ship lap off to provide a smooth cut edge at the left and right of the accent wall. The right panels will butt tight against the right inside corner wall surface.

Face Fastening Panels

- Most likely, the top row of Nichiha panels will need to be cut horizontally to properly fit flush to the existing ceiling. Since the top shiplap edge of the Nichiha panel will be cut off, a Nichiha clip CANNOT be used to fasten the panel to an existing stud.
- To properly FACE Fasten a Nichiha panels, please do the following:
- Face Fasten the top of the Nichiha panel into a minimum of 3 studs. Face Fasteners should be a minimum of 1" from all panel edges. This will avoid cracking or breaking panels. Pre-drill the panel before fastening. Depending on the brick layout, please find the mortar joint that lines up with a stud, pre-drill and then face fasten the Nichiha panel. Then, find the approximate middle of the panel, and face fasten into a stud area for proper adherence.
- When face nailing panels, use 3/16" spacer behind the panels to ensure panel stability.

Installing the Top Last Course

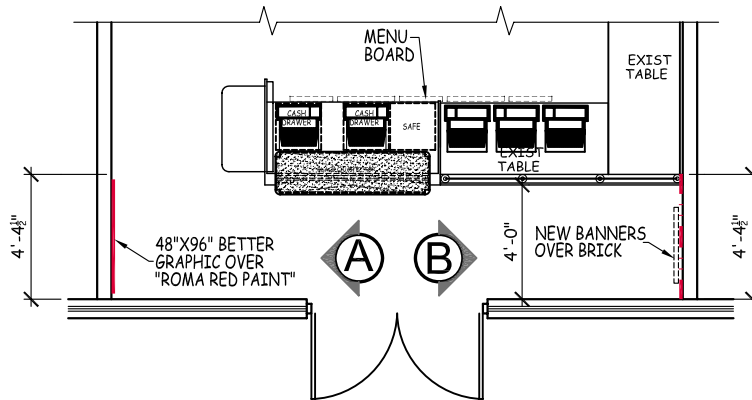
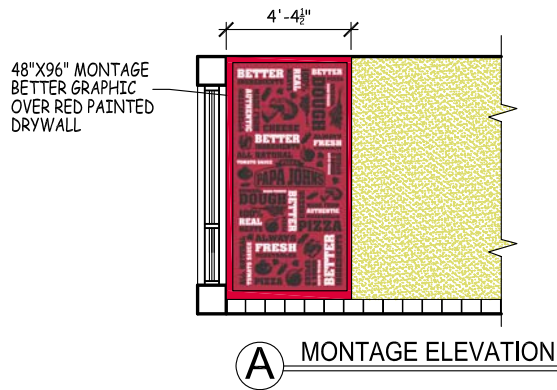
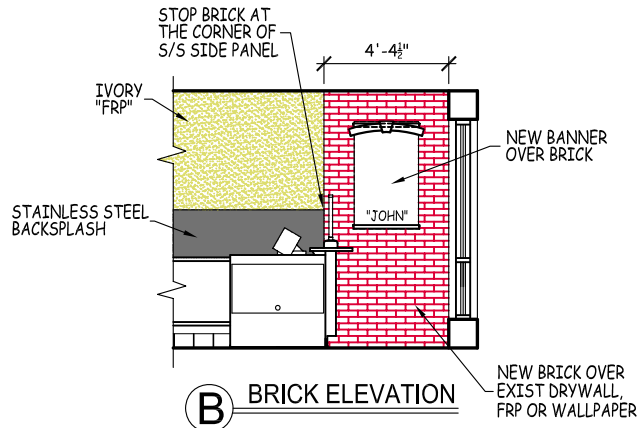
- Cut panels (horizontally) to properly fit at the top of the wall. Allow the proper gap for finish trim.
- The 3/16" spacer is placed behind the panel at the top of your wall. The spacer is required to maintain the plane of the panel without using the clips. Fasten through the spacer and sheathing into the stud with a bugle head type fastener counter-sunk enough for patch and paint after completion.
- The face fastener screw at each stud should penetrate through the spacer into the stud along the top edge of the panel. Pre-drill holes in the Nichiha panels 1" from the top (cut) edge or side cut edge.
- Fill counter-sunk fastener holes with Caulking provided.

Safety Reminder

- When cutting Nichiha products wear a properly fitted respirator/mask (NIOSH/OSHA approved respirator with a rating of N100, O100 or P100 in accordance with applicable government regulations and manufacturer instructions).
- Refer to the Nichiha Safety Guidelines for additional important safety information to protect you and others.

Cutting & Cleaning Panels

- All panels should be marked and cut with fiber cement blade from the back side for best surface condition.
- Cleaning panels, use wet clean cloth to wipe cutting dust from the surface.

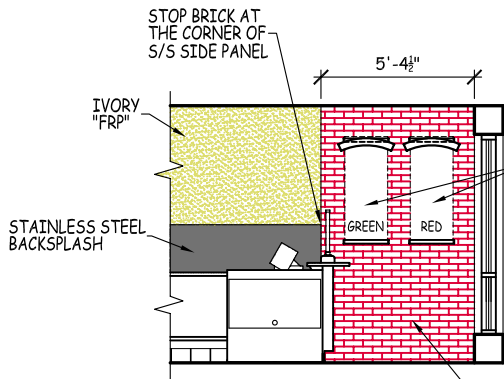


NO BULKHEAD

**NEW BRICK PACKAGE
W/ 4'-0" LOBBY**

2-22-2011

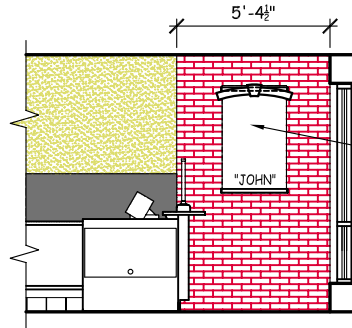




(B) BRICK ELEVATION

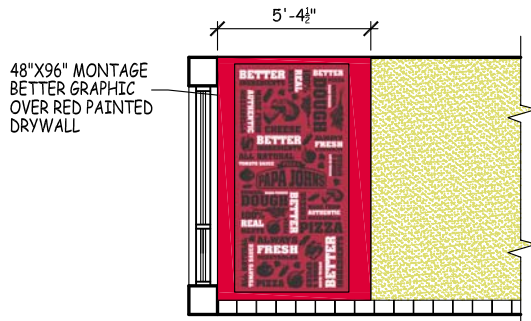
NEW BANNERS OVER BRICK
OPTION: YOU CAN USE A SINGLE "JOHN" BANNER

NEW BRICK OVER EXIST DRYWALL, FRP OR WALLPAPER

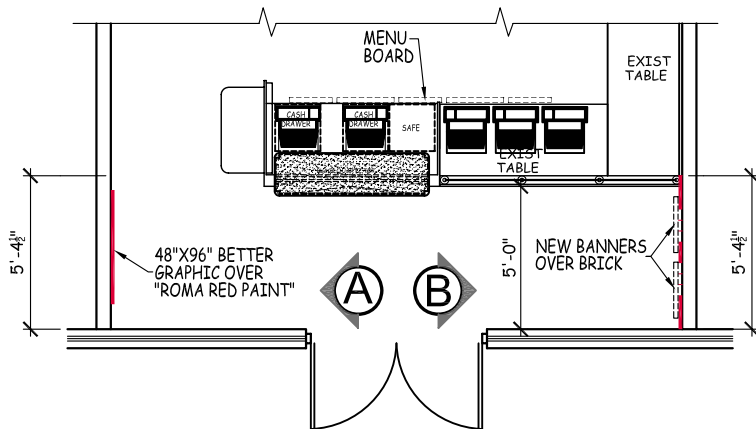


(B) BANNER OPTION

OPTION: YOU CAN USE A SINGLE "JOHN" BANNER



(A) MONTAGE ELEVATION

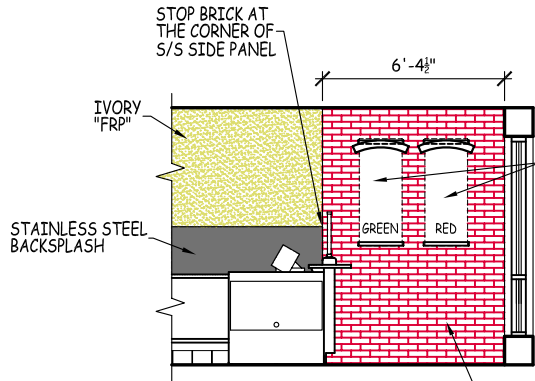


NO BULKHEAD

**NEW BRICK PACKAGE
W/ 5'-0" LOBBY**

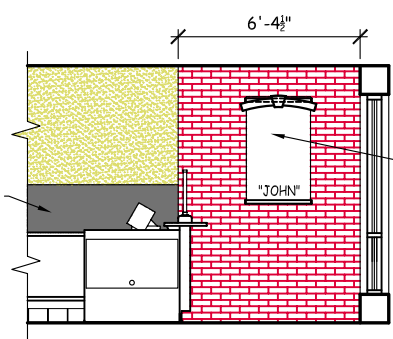
2-22-2011





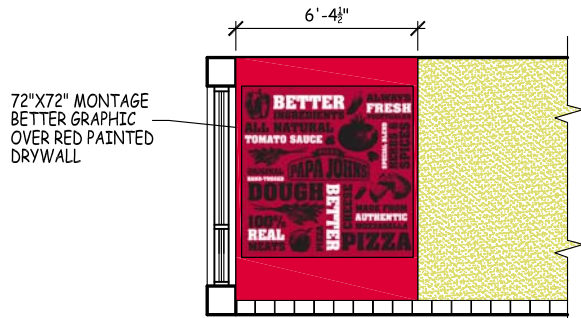
(B) BRICK ELEVATION

NEW BRICK OVER EXIST DRYWALL, FRP OR WALLPAPER

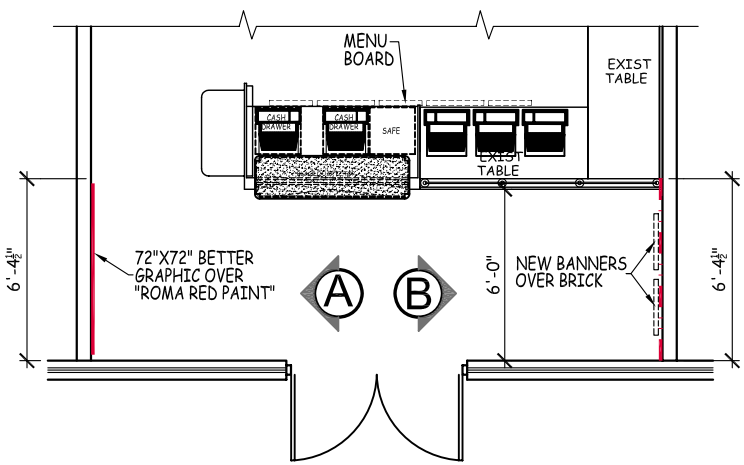


(B) BANNER OPTION

OPTION: YOU CAN USE A SINGLE "JOHN" BANNER



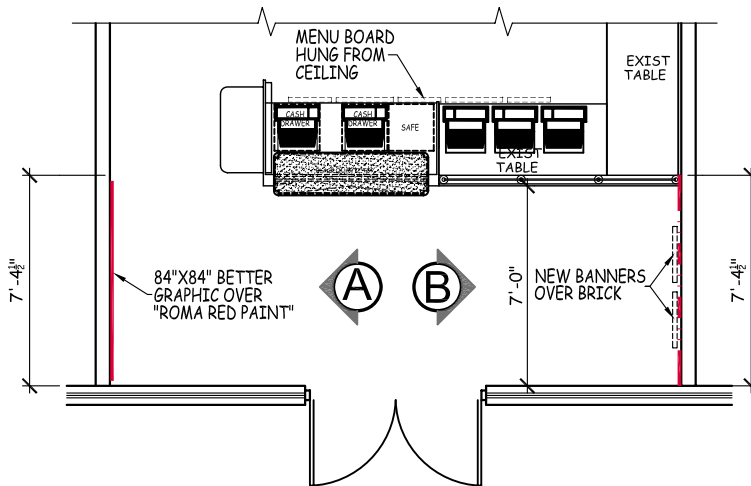
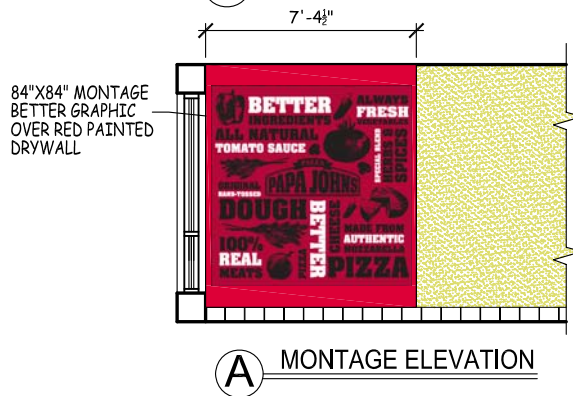
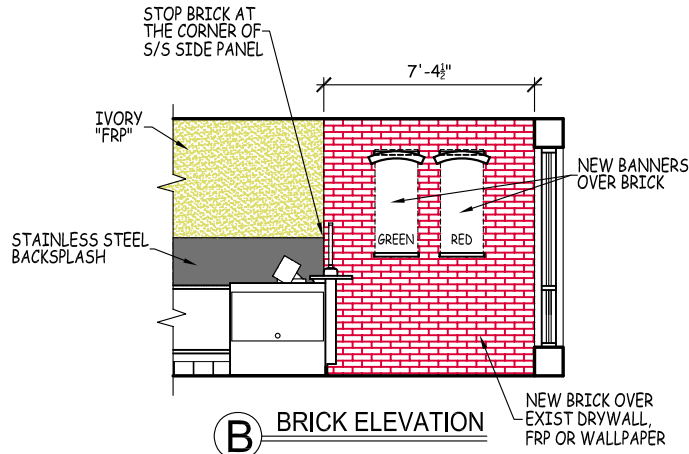
(A) MONTAGE ELEVATION



NO BULKHEAD

**NEW BRICK PACKAGE
W/ 6'-0" LOBBY
2-22-2011**



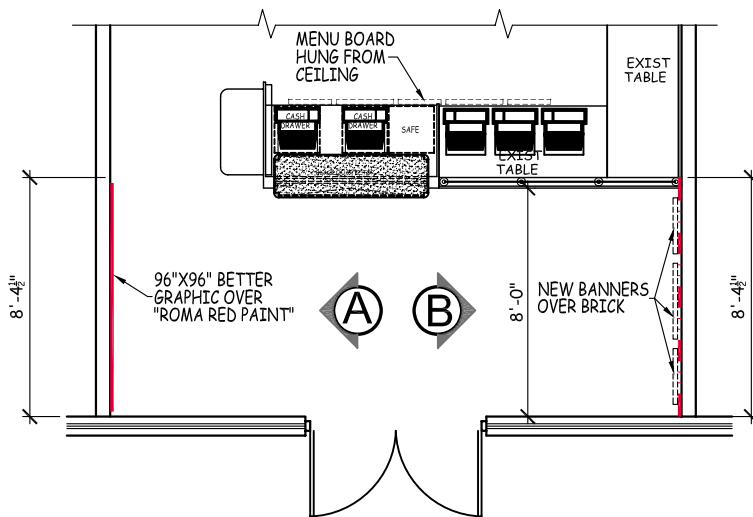
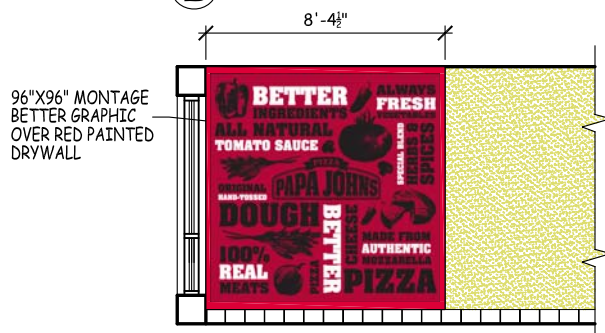
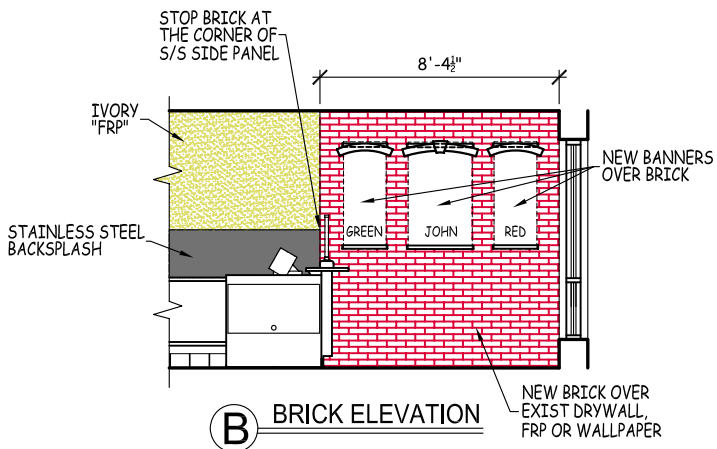


NO BULKHEAD

**NEW BRICK PACKAGE
W/ 7'-0" LOBBY**

2-22-2011



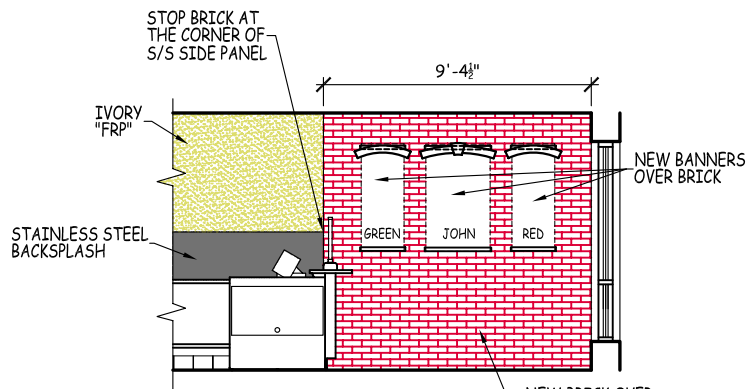


NO BULKHEAD

NEW BRICK PACKAGE
W/ 8'-0" LOBBY

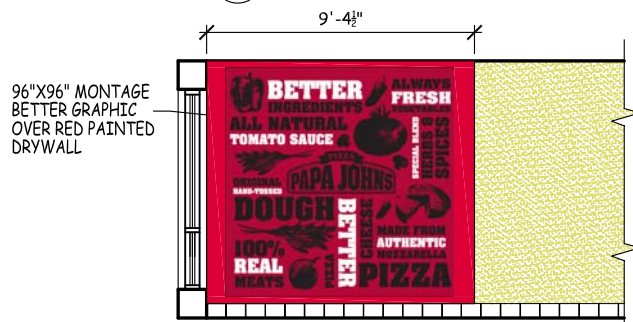
2-22-2011



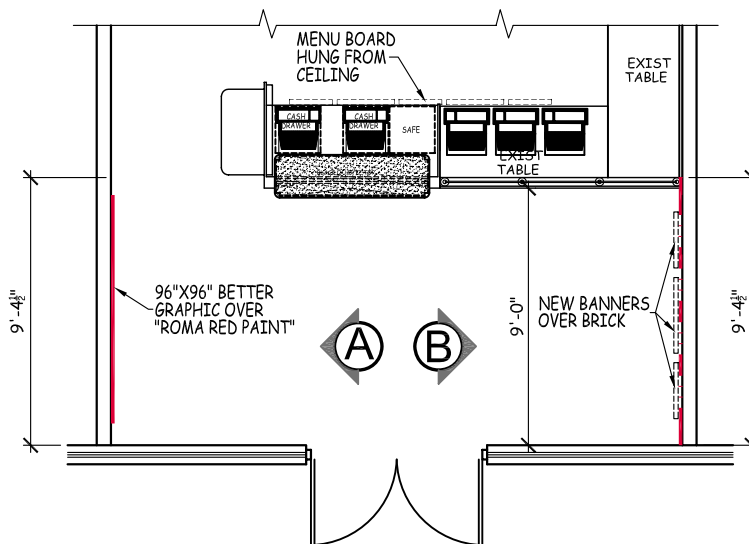


(B) BRICK ELEVATION

NEW BRICK OVER EXIST DRYWALL, FRP OR WALLPAPER



(A) MONTAGE ELEVATION

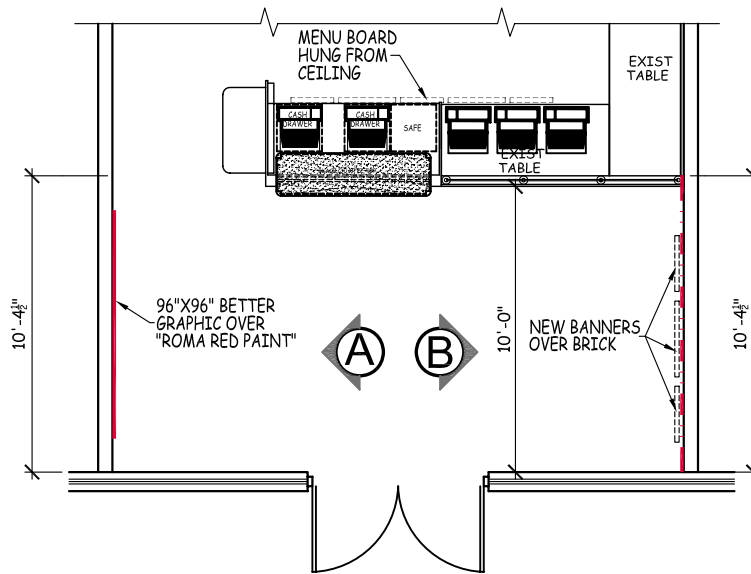
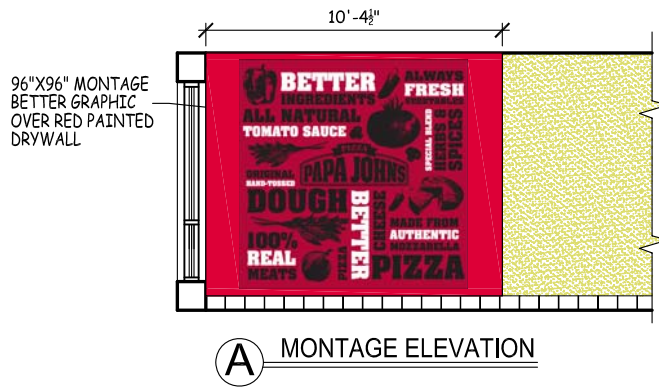
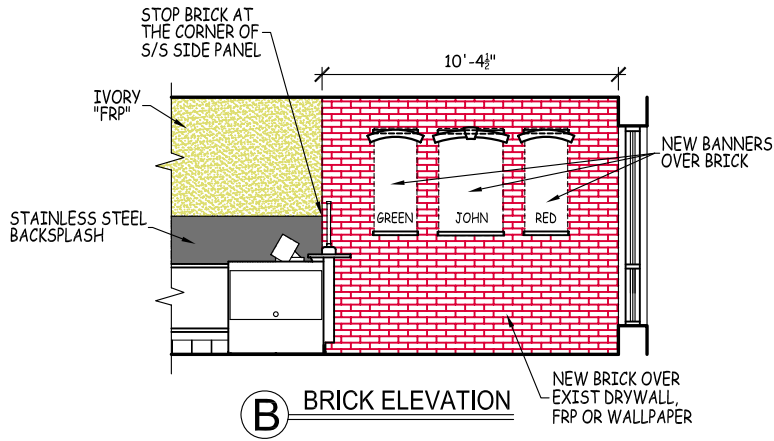


NO BULKHEAD

**NEW BRICK PACKAGE
W/ 9'-0" LOBBY**

2-22-2011





NO BULKHEAD

**NEW BRICK PACKAGE
W/ 10'-0" LOBBY**

2-22-2011





- WALL GRAPHIC TO BE DIGITALLY PRINTED ON WHITE PRESSURE-SENSITIVE VINYL. VINYL TO RECEIVE MATTE OVER LAMINATE. FINISHED PRINTED AND LAMINATED GRAPHIC TO BE CAD-CUT TO SHAPE.
- VERIFY THAT WALLS HAVE BEEN PAINTED BY G.C. WITH LATEX SEMI-GLOSS FINISH OR EPOXY PAINT AND HAS CURED FOR AT LEAST 48 HOURS. GRAPHIC TO BE APPLIED DIRECTLY TO PAINTED OR "FRP" SURFACE OF WALLS. THE VINYL USED IS DIFFERENT FOR A DRYWALL OR "FRP" APPLICATION YOU MUST PLACE YOUR ORDER SPECIFICALLY FOR "FRP" OR DRYWALL.
- VENDOR TO VERIFY EXACT DIMENSIONS OF WALLCOVERING NEEDED FOR EACH LOCATION PRIOR TO PRODUCTION.

SQUARE
"BETTER" MONTAGE

3-30-2011

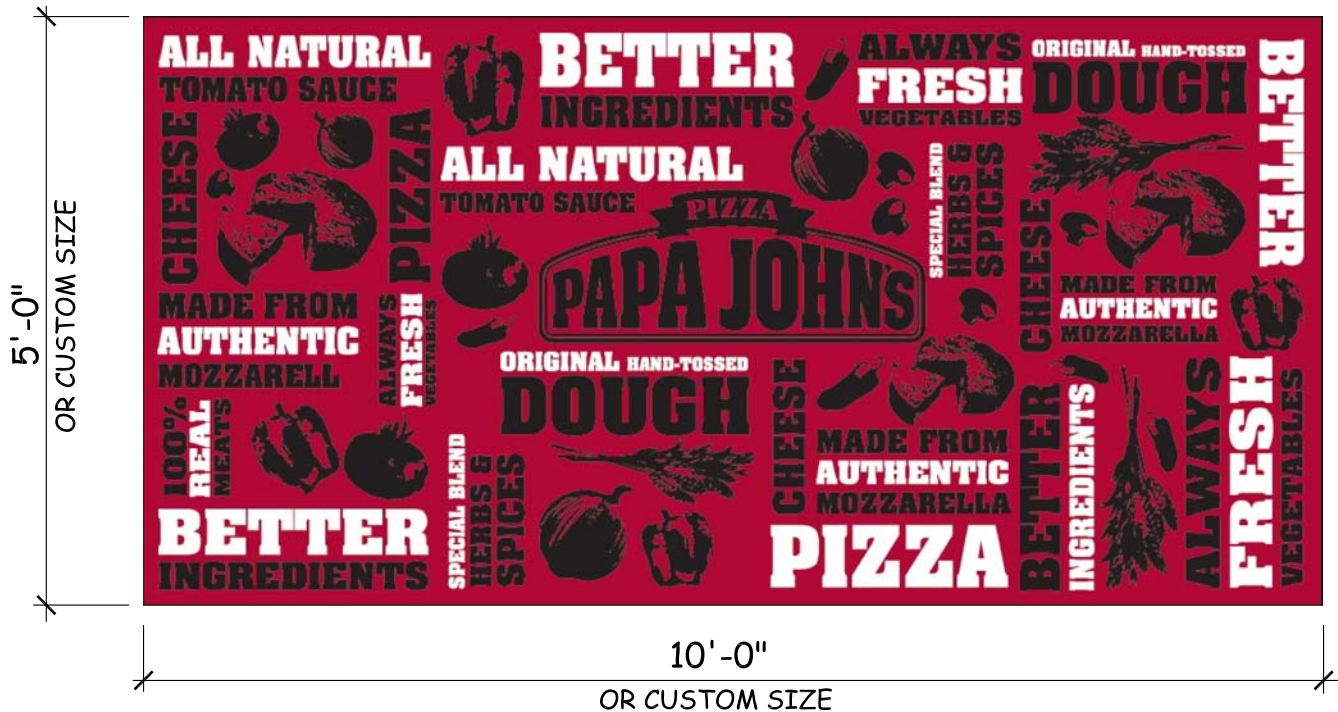




- WALL GRAPHIC TO BE DIGITALLY PRINTED ON WHITE PRESSURE-SENSITIVE VINYL. VINYL TO RECEIVE MATTE OVER LAMINATE. FINISHED PRINTED AND LAMINATED GRAPHIC TO BE CAD-CUT TO SHAPE.
- VERIFY THAT WALLS HAVE BEEN PAINTED BY G.C. WITH LATEX SEMI-GLOSS FINISH OR EPOXY PAINT AND HAS CURED FOR AT LEAST 48 HOURS. GRAPHIC TO BE APPLIED DIRECTLY TO PAINTED OR "FRP" SURFACE OF WALLS. THE VINYL USED IS DIFFERENT FOR A DRYWALL OR "FRP" APPLICATION YOU MUST PLACE YOUR ORDER SPECIFICALLY FOR "FRP" OR DRYWALL.
- VENDOR TO VERIFY EXACT DIMENSIONS OF WALLCOVERING NEEDED FOR EACH LOCATION PRIOR TO PRODUCTION.

4' X 8'
 "BETTER" MONTAGE
 3-30-2011

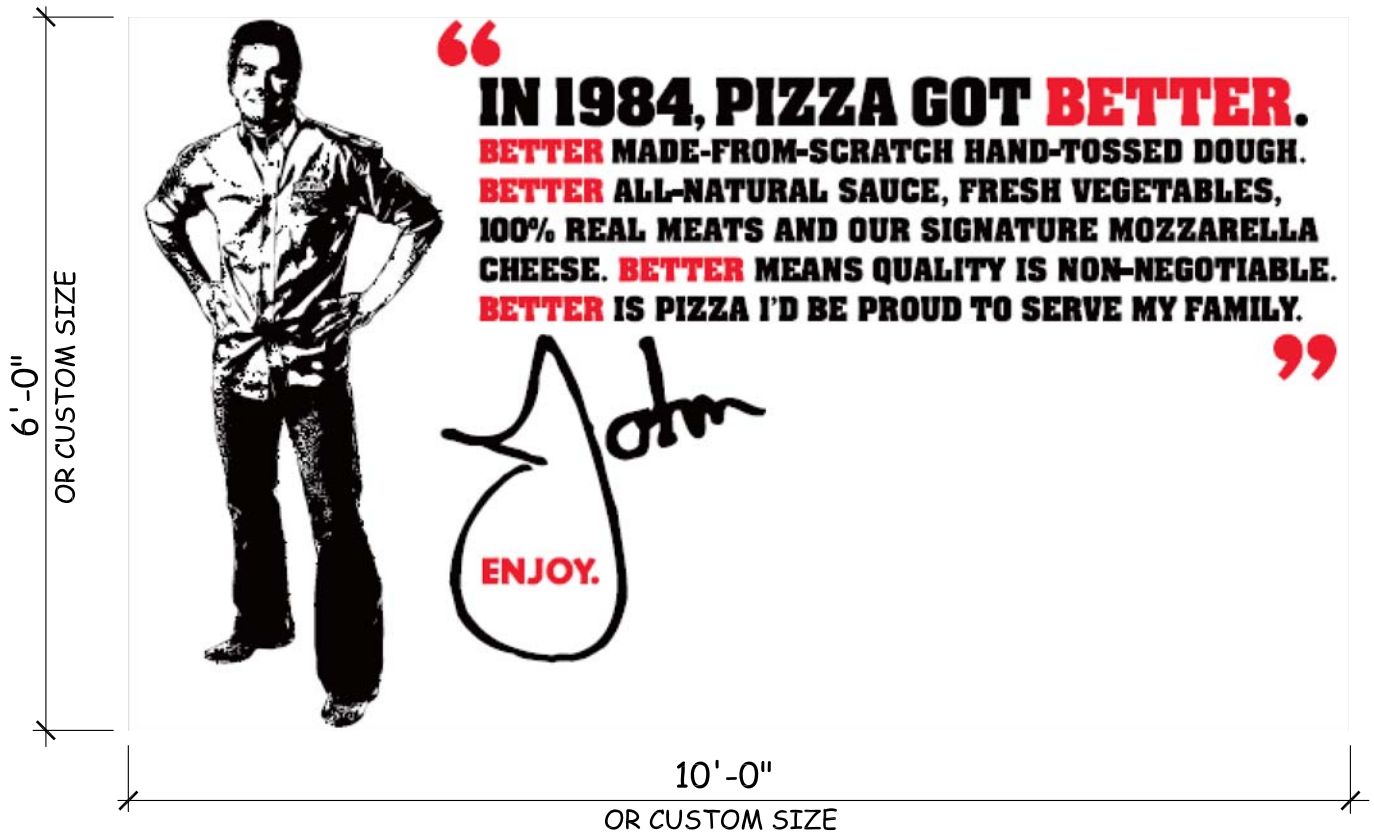




- WALL GRAPHIC TO BE DIGITALLY PRINTED ON WHITE PRESSURE-SENSITIVE VINYL. VINYL TO RECEIVE MATTE OVER LAMINATE. FINISHED PRINTED AND LAMINATED GRAPHIC TO BE CAD-CUT TO SHAPE.
- VERIFY THAT WALLS HAVE BEEN PAINTED BY G.C. WITH LATEX SEMI-GLOSS FINISH OR EPOXY PAINT AND HAS CURED FOR AT LEAST 48 HOURS. GRAPHIC TO BE APPLIED DIRECTLY TO PAINTED OR "FRP" SURFACE OF WALLS. THE VINYL USED IS DIFFERENT FOR A DRYWALL OR "FRP" APPLICATION YOU MUST PLACE YOUR ORDER SPECIFICALLY FOR "FRP" OR DRYWALL.
- VENDOR TO VERIFY EXACT DIMENSIONS OF WALLCOVERING NEEDED FOR EACH LOCATION PRIOR TO PRODUCTION.

5' X 10'
 "BETTER" MONTAGE
 3-30-2011

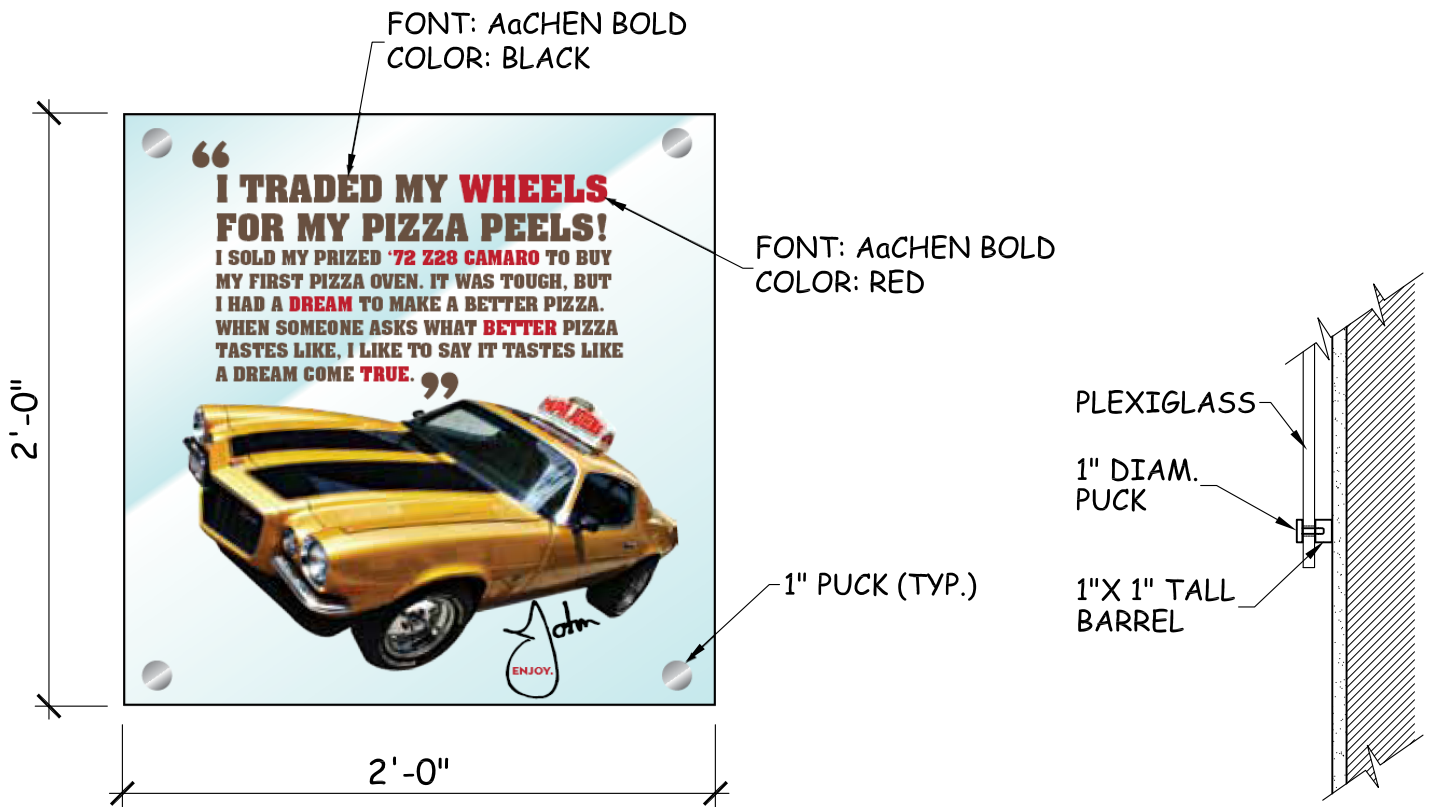




- WALL GRAPHIC TO BE DIGITALLY PRINTED ON WHITE PRESSURE-SENSITIVE VINYL. VINYL TO RECEIVE MATTE OVER LAMINATE. FINISHED PRINTED AND LAMINATED GRAPHIC TO BE CAD-CUT TO SHAPE.
- VERIFY THAT WALLS HAVE BEEN PAINTED BY G.C. WITH LATEX SEMI-GLOSS FINISH OR EPOXY PAINT AND HAS CURED FOR AT LEAST 48 HOURS. GRAPHIC TO BE APPLIED DIRECTLY TO PAINTED OR "FRP" SURFACE OF WALLS. THE VINYL USED IS DIFFERENT FOR A DRYWALL OR "FRP" APPLICATION YOU MUST PLACE YOUR ORDER SPECIFICALLY FOR "FRP" OR DRYWALL.
- VENDOR TO VERIFY EXACT DIMENSIONS OF WALLCOVERING NEEDED FOR EACH LOCATION PRIOR TO PRODUCTION.

5' X 10'
 "BETTER" MONTAGE
 3-30-2011



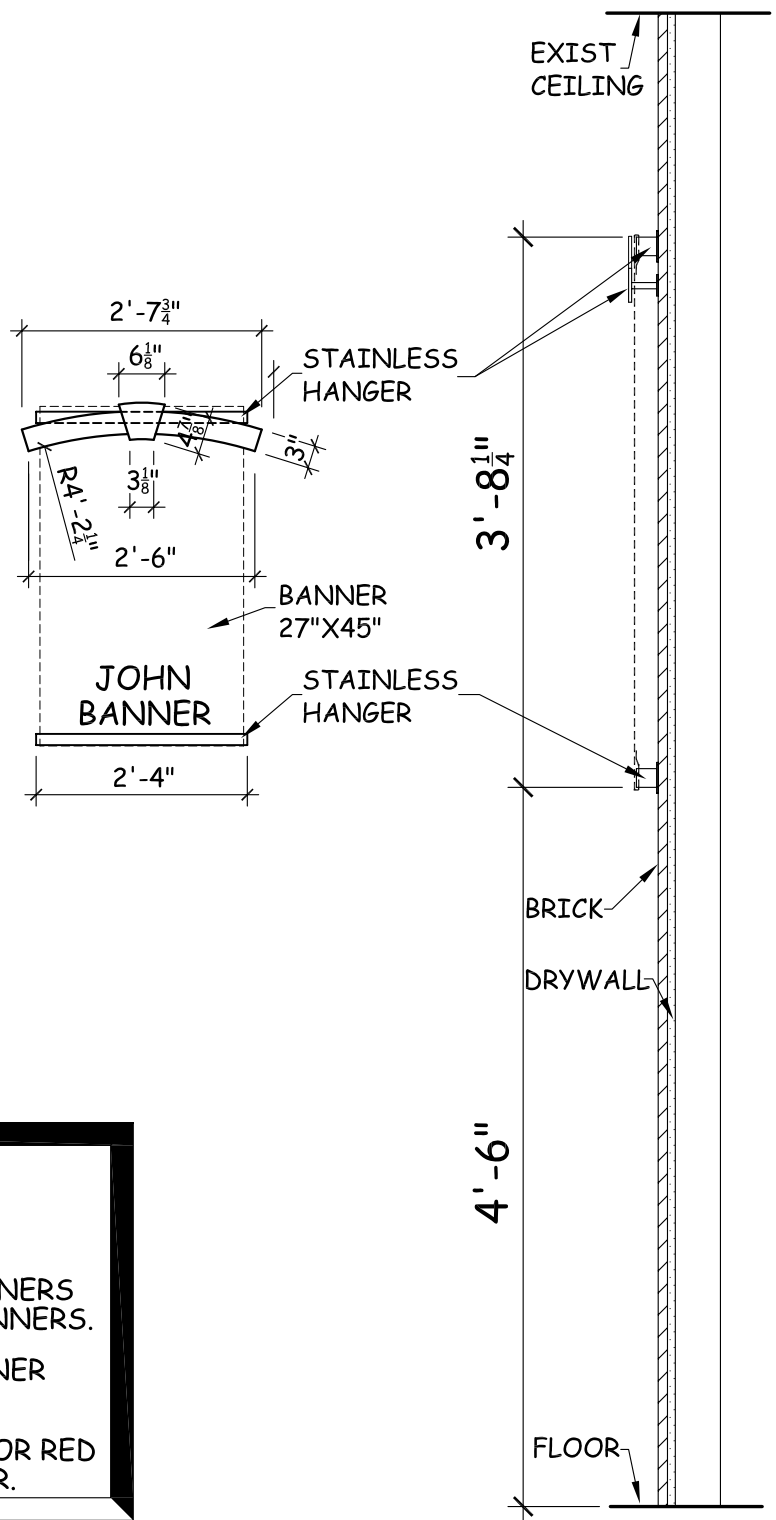


- GRAPHIC PANEL TO BE (2) 3/8" PLEXIGLASS PANELS WITH POLISHED EDGES AND ALL CORNERS EASED.
- GRAPHICS TO BE DIGITALLY PRINTED CAD-CUT VINYL APPLIED TO SURFACE OF PLEXIGLASS SECOND PANEL TO SANDWICH GRAPHIC. PRINTED ELEMENTS INCLUDE ALL COPY, SIGNATURE AND CAR.
- GLASS PANEL IS TO BE MOUNTED TO WALL WITH 1" STAND OFF USING PUCK AND BARREL SYSTEM.

CAMARO PLAQUE

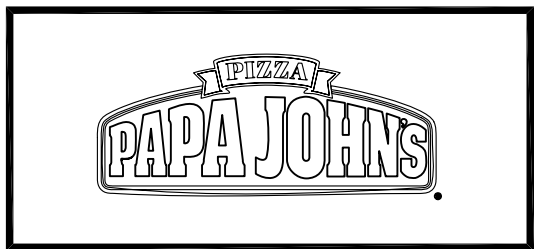
2-21-2011

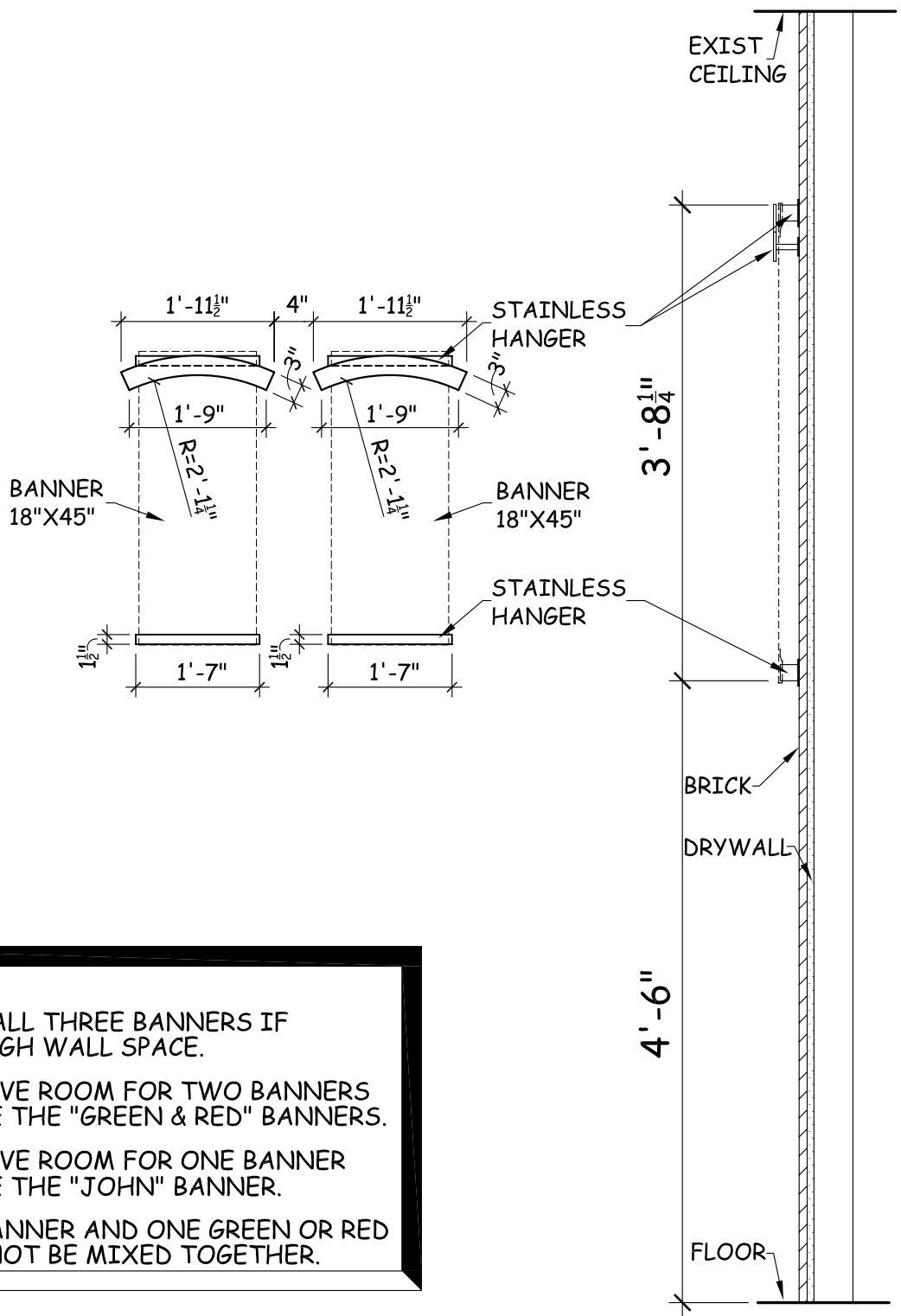




NOTE:
 YOU MUST USE ALL THREE BANNERS IF YOU HAVE ENOUGH WALL SPACE.
 IF YOU ONLY HAVE ROOM FOR TWO BANNERS YOU WOULD USE THE "GREEN & RED" BANNERS.
 IF YOU ONLY HAVE ROOM FOR ONE BANNER YOU WOULD USE THE "JOHN" BANNER.
 * THE "JOHN" BANNER AND ONE GREEN OR RED BANNER MAY NOT BE MIXED TOGETHER.

**STANDARD POPLIN BANNERS
 AND ARMITURES**
 2-21-2011





NOTE:

YOU MUST USE ALL THREE BANNERS IF YOU HAVE ENOUGH WALL SPACE.

IF YOU ONLY HAVE ROOM FOR TWO BANNERS YOU WOULD USE THE "GREEN & RED" BANNERS.

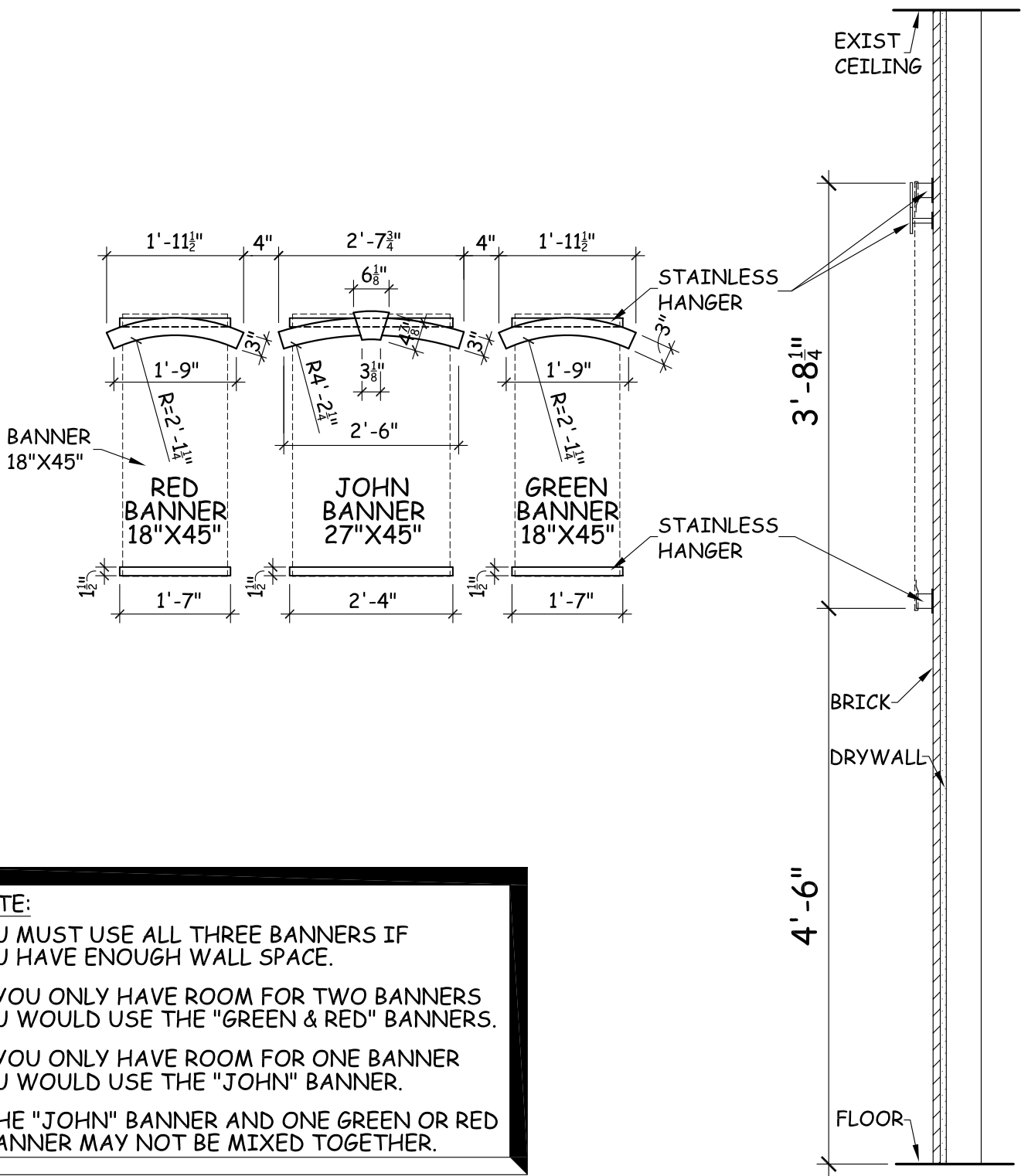
IF YOU ONLY HAVE ROOM FOR ONE BANNER YOU WOULD USE THE "JOHN" BANNER.

* THE "JOHN" BANNER AND ONE GREEN OR RED BANNER MAY NOT BE MIXED TOGETHER.

**STANDARD POPLIN BANNERS
AND ARMITURES**

2-21-2011





NOTE:
 YOU MUST USE ALL THREE BANNERS IF YOU HAVE ENOUGH WALL SPACE.
 IF YOU ONLY HAVE ROOM FOR TWO BANNERS YOU WOULD USE THE "GREEN & RED" BANNERS.
 IF YOU ONLY HAVE ROOM FOR ONE BANNER YOU WOULD USE THE "JOHN" BANNER.
 * THE "JOHN" BANNER AND ONE GREEN OR RED BANNER MAY NOT BE MIXED TOGETHER.

STANDARD POPLIN BANNERS AND ARMITURES
 2-21-2011

