

**Foodservice Equipment • Material Handling, Healthcare & Cleanroom Equipment • Retail Display**

# SPEC-BAR-2000® Three-Compartment Sinks



*Spec-Bar 2000®  
3-compartment sink  
with optional speed rail*

Item #:	_____
Model #:	_____
Project #:	_____
SIS #:	_____

Optional Accessories	Model #	Qty.
Speed Rail		



- Body, legs and crossbracing constructed of type 304 stainless steel for strength and corrosion resistance.
- Stainless steel adjustable bullet feet.
- Sink compartments are 10" x 14" x 9½" (254 x 356 x 241mm) with T&S hot and cold water faucet.
- 19" (483mm) wide models have a backsplash mounted T&S faucet.
- Stainless steel workboard on one or both sides with independent drain.
- Workboards feature removable perforated stainless steel insert.

**Spec sheets available for viewing, printing or downloading from our online literature library at [www.eaglegrp.com](http://www.eaglegrp.com)**

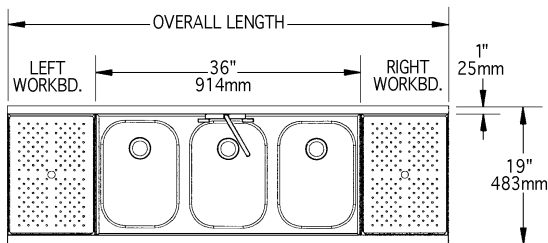
For custom configuration or fabrication needs, contact our **SpecFAB Division**.  
 Phone: (302) 653-3000. FAX: (302) 653-3091.  
 E-mail: [specfab@eaglegrp.com](mailto:specfab@eaglegrp.com)

# SPEC-BAR-2000® Three-Compartment Sinks

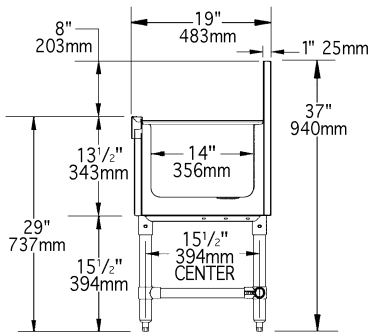
## Design & Construction Features

- Drains are 1½" (38mm) I.P.S. threaded with nut and washer.
- Faucet is a backsplash mounted T&S faucet on 4" (102mm) centers and ½" (13mm) NPT inlet. Hot and cold water connections required.
- Legs are 1½" (41mm) diameter type 304 stainless steel with stainless steel bullet feet.
- Construction: Backsplash, sides, bottom, front panel, drain pans, perforated inserts and bowls are constructed of 20 gauge stainless steel. Leg channels, legs and crossbracing are 16 gauge stainless steel.

### 19" wide (483mm)

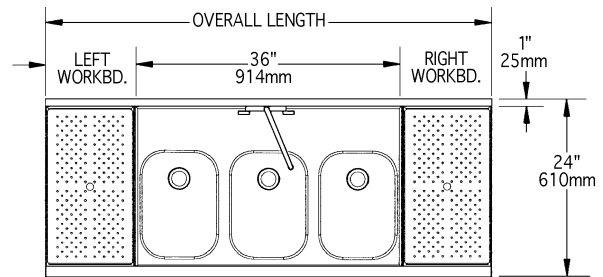


TOP VIEW

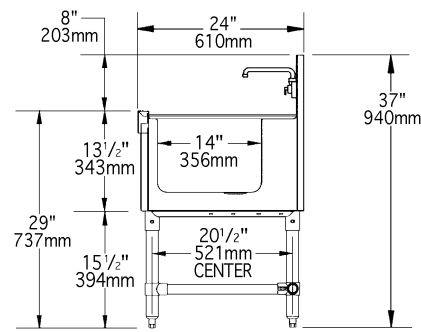


SIDE VIEW

### 24" wide (610mm)



TOP VIEW



SIDE VIEW

overall length	left workboard		right workboard		weight		model #	
	in.	mm	in.	mm	lbs.	kg		
36"	914	n/a	n/a	n/a	60	27.2	B3-3-19	
48"	1219	n/a	n/a	12"	305	70	31.8	B4-3-R-19
48"	1219	12"	305	n/a	n/a	70	31.8	B4-3-L-19
60"	1524	n/a	n/a	24"	610	80	36.3	B5-3-R-19
60"	1524	24"	610	n/a	n/a	80	36.3	B5-3-L-19
60"	1524	12"	305	12"	305	80	36.3	B5-3-LR-19
66"	1676	n/a	n/a	30"	762	85	38.6	B5.5-3-R-19
66"	1676	30"	762	n/a	n/a	85	38.6	B5.5-3-L-19
72"	1829	n/a	n/a	36"	914	90	40.8	B6-3-R-19
72"	1829	36"	914	n/a	n/a	90	40.8	B6-3-L-19
72"	1829	18"	457	18"	457	90	40.8	B6-3-LR-19
84"	2134	24"	610	24"	610	105	47.6	B7-3-LR-19
96"	2438	30"	762	30"	762	120	54.4	B8-3-LR-19

overall length	left workboard		right workboard		weight		model #	
	in.	mm	in.	mm	lbs.	kg		
36"	914	n/a	n/a	n/a	65	29.5	B3-3-24	
48"	1219	n/a	n/a	12"	305	75	34.0	B4-3-R-24
48"	1219	12"	305	n/a	n/a	75	34.0	B4-3-L-24
60"	1524	n/a	n/a	24"	610	85	38.6	B5-3-R-24
60"	1524	24"	610	n/a	n/a	85	38.6	B5-3-L-24
60"	1524	12"	305	12"	305	85	38.6	B5-3-LR-24
66"	1676	n/a	n/a	30"	762	90	40.8	B5.5-3-R-24
66"	1676	30"	762	n/a	n/a	90	40.8	B5.5-3-L-24
72"	1829	n/a	n/a	36"	914	95	43.1	B6-3-R-24
72"	1829	36"	914	n/a	n/a	95	43.1	B6-3-L-24
72"	1829	18"	457	18"	457	95	43.1	B6-3-LR-24
84"	2134	24"	610	24"	610	110	49.9	B7-3-LR-24
96"	2438	30"	762	30"	762	125	56.7	B8-3-LR-24