

MATERIAL AND EXECUTION NOTES

- MATERIALS**
1. ALL EXTERIOR TRIM TO BE LIMITED TO SMOOTH, UNADORNED FINISH AS MANUFACTURED BY JAMBS HENDRICK OR APPROVED EQUAL.
 2. ALL SIGNS AND LED LIGHTING ARE FINISHED AND INSTALLED BY INSTALLATION.
 3. EXTERIOR WINDOW GLAZES TO BE INSULATED GLAZE OVER CLEAN GLAZES.
 4. EXTERIOR APPLIED STONE BY EUROWOOD STONE, COLOR/STYLE TO BE RUBY MONTE CARLO. CONTACT EITHER CHUCK BARB OR KEVIN APPROVED EQUALS ARE:
 5. EUROWOOD STONE AT (866) 811-6466. COLOR/STYLE IS TO BE RUBY MONTE CARLO. CONTACT EITHER CHUCK BARB OR KEVIN APPROVED EQUALS ARE:
 6. ALL VERTICAL COMPONENTS THAT HAVE AN EXPOSED FINISH SURFACE ARE TO BE GALVANIZED. THE CAST METAL STRIKE NOT REQUIRED TO BE GALVANIZED.
- EXECUTION**
1. USE ONLY 25 YEAR SILICONESEAL PAINTABLE GRAUL ON THE EXTERIOR OF THE BUILDING TRIM.
 2. ALL SURFACE MTD UNITS, JOINTS, METERS, ETC. SHALL BE MOUNTED NO MORE THAN 1/2" FROM THE SURFACE.
 3. DOWNSPUTS (STRIPS) ARE TO BE PAINTED TO MATCH ADJACENT BUILDING COLORS.
 4. IF NECESSARY STRIP BASE TRIM TO FOLLOW SLOPING GRADE AROUND THE PERIMETER OF THE BUILDING. BREAK TRIM AT DOOR OPENINGS OR ALONG BUILDING SIGNS WITH RUBY TUESDAY CONSTRUCTION DIRECTOR.
 5. SEE SHEET AS 2 FOR ALL SIGN DETAILS. COORDINATE USE AND INSTALLATION OF ALL BUILDING SIGNS WITH RUBY TUESDAY CONSTRUCTION DIRECTOR.
 6. SEE SHEET AS 2 FOR ANNING NOTES.
 7. STONE VENEER TO BE INSTALLED TRUE, SQUARE, PLUMB, AND PARALLEL TO THE FACE OF THE BUILDING.
 8. ALL VERTICAL ROOF FOR EQUIPMENT SHALL BE FIELD PAINTED BY MANUFACTURER.
 9. ALL CAVITY WALLS TO RECEIVE 666 RUSH PINK TO PAINTING TRICAL OF BROWN INTERIOR EXTENSION STRIPS. COLOR TO MATCH FIELD BUILDING COLORS.

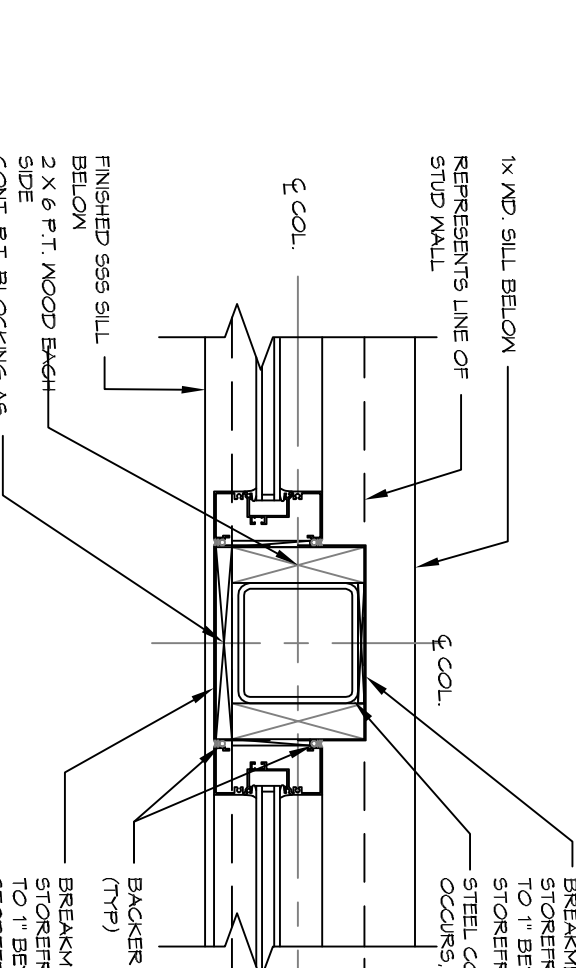
- GENERAL NOTES**
1. ALL LIGHTING BOARDS, ELECTRICAL PANELS, GAS VALVES, ETC. ARE TO BE PAINTED A TO MATCH (666) IF PERMISSIBLE BY THE LOCAL UTILITY COMPANIES.
 2. ALL SURFACE MTD UNITS, JOINTS, METERS, ETC. SHALL BE MOUNTED NO MORE THAN 1/2" FROM THE SURFACE.
 3. DOWNSPUTS (STRIPS) ARE TO BE PAINTED TO MATCH ADJACENT BUILDING COLORS.
 4. IF NECESSARY STRIP BASE TRIM TO FOLLOW SLOPING GRADE AROUND THE PERIMETER OF THE BUILDING. BREAK TRIM AT DOOR OPENINGS OR ALONG BUILDING SIGNS WITH RUBY TUESDAY CONSTRUCTION DIRECTOR.
 5. SEE SHEET AS 2 FOR ALL SIGN DETAILS. COORDINATE USE AND INSTALLATION OF ALL BUILDING SIGNS WITH RUBY TUESDAY CONSTRUCTION DIRECTOR.
 6. SEE SHEET AS 2 FOR ANNING NOTES.
 7. STONE VENEER TO BE INSTALLED TRUE, SQUARE, PLUMB, AND PARALLEL TO THE FACE OF THE BUILDING.
 8. ALL VERTICAL ROOF FOR EQUIPMENT SHALL BE FIELD PAINTED BY MANUFACTURER.
 9. ALL CAVITY WALLS TO RECEIVE 666 RUSH PINK TO PAINTING TRICAL OF BROWN INTERIOR EXTENSION STRIPS. COLOR TO MATCH FIELD BUILDING COLORS.

FINISH LEGEND

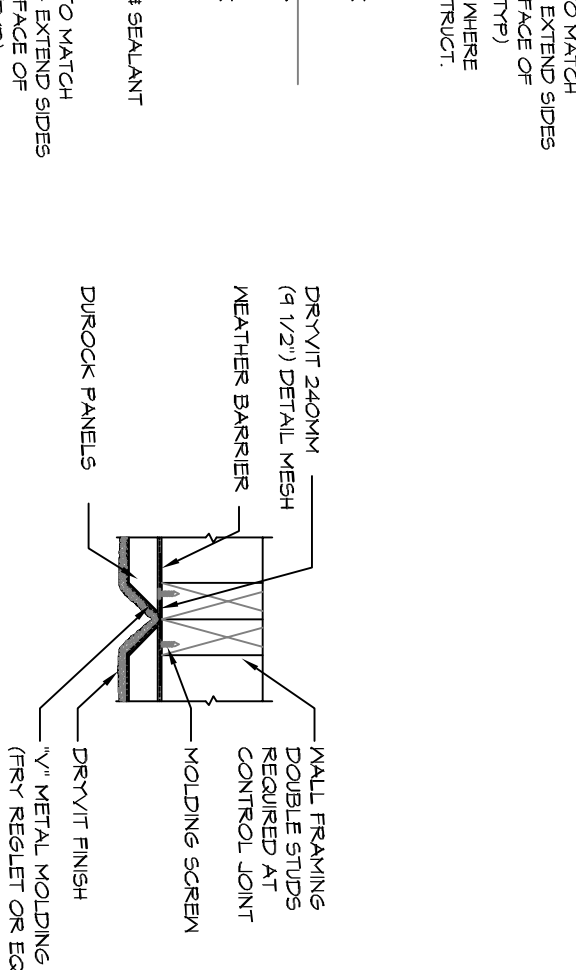
A	RUBY TUESDAY MUSTARD	SUPERPANT EXTERIOR GLOSS ACQUA-ULTRAHEEP BASE FORMULA FOR 1 GALLON
B	SHERWIN WILLIAMS #82819 ROOKWOOD SHUTTER GREEN	3 COAT COLOR FORMULA FOR 1 GALLON
C	RUBY TUESDAY CANOPY RED	3 COAT COLOR FORMULA FOR 1 GALLON
D	SHERWIN WILLIAMS #194 "BUSH"	92 NDN GREEN-2232 M (WHITE) 2144/92
E	DRYVIT CUSTOM COLOR MAT-22-08-24-03 (MUSTARD)	PRIMER ACQUA HIGH GLOSS 132850 - FORMULA FOR 1 GALLON
F	SHERWIN WILLIAMS MACROGRO 646 PRIMER TO BE PAINTED AT ALL DISCREPANT VERTICAL SURFACES AS A BASE FOR COLOR PAINT	PRIMER ACQUA HIGH GLOSS 132850 - FORMULA FOR 1 GALLON
G	DISCREPANT VERTICAL SURFACES AS A BASE FOR COLOR PAINT	PRIMER ACQUA HIGH GLOSS 132850 - FORMULA FOR 1 GALLON

CUSTOM PAINT FORMULA KEY

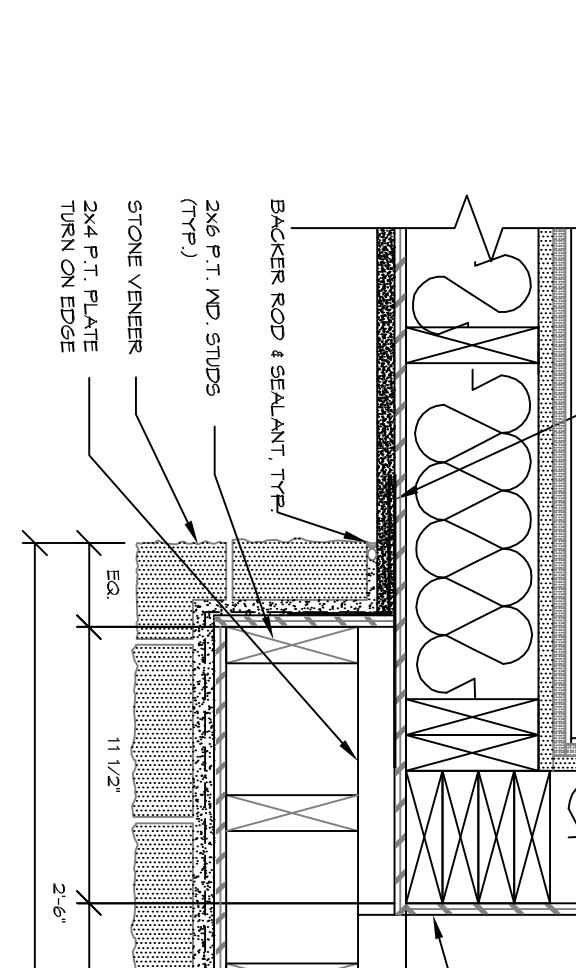
RUBY TUESDAY MUSTARD	SUPERPANT EXTERIOR GLOSS ACQUA-ULTRAHEEP BASE FORMULA FOR 1 GALLON
RUBY TUESDAY CANOPY RED	3 COAT COLOR FORMULA FOR 1 GALLON
DRYVIT CUSTOM COLOR MAT-22-08-24-03 (MUSTARD)	PRIMER ACQUA HIGH GLOSS 132850 - FORMULA FOR 1 GALLON
SHERWIN WILLIAMS MACROGRO 646 PRIMER TO BE PAINTED AT ALL DISCREPANT VERTICAL SURFACES AS A BASE FOR COLOR PAINT	PRIMER ACQUA HIGH GLOSS 132850 - FORMULA FOR 1 GALLON



1 JAMB DETAIL
SCALE: 1/2"=1'-0"



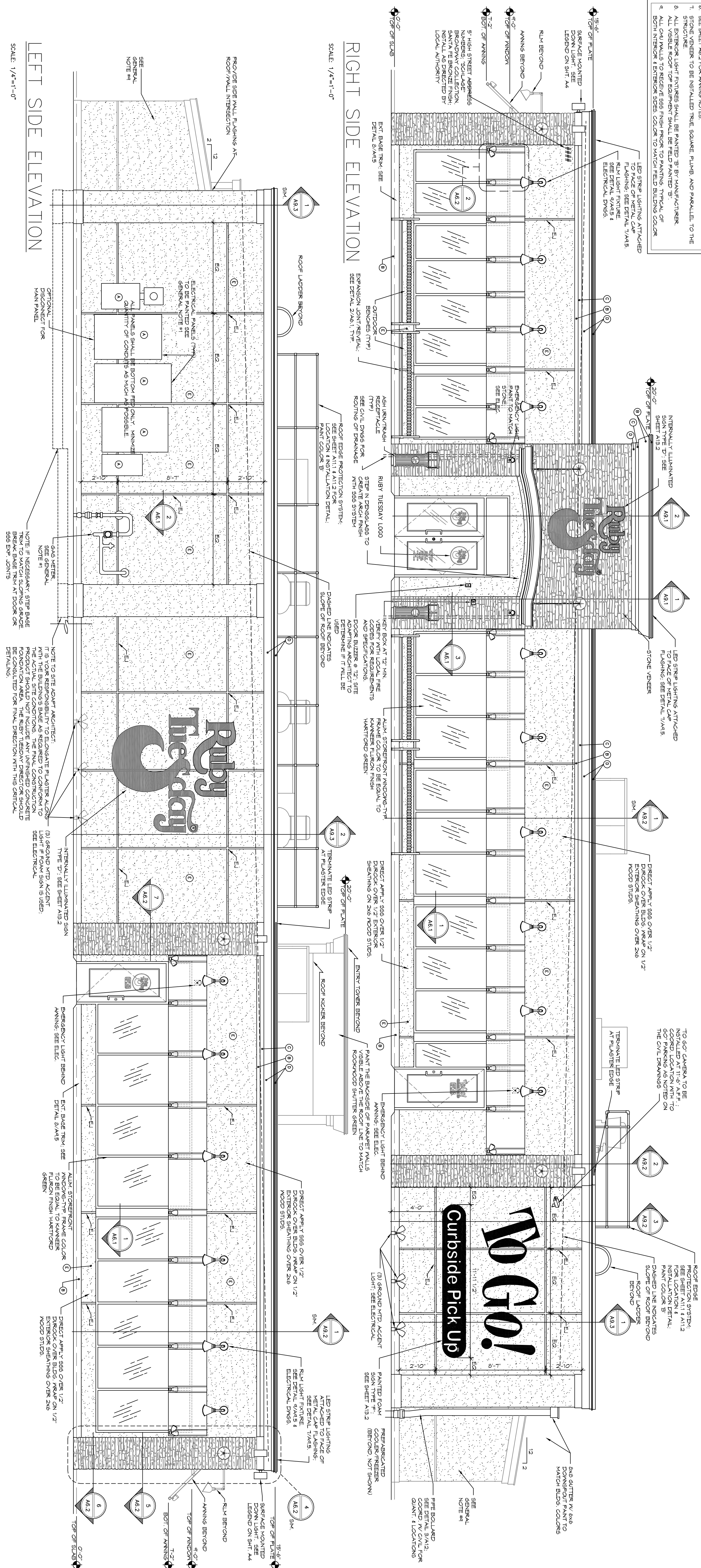
2 EXP. JOINT/REVEAL DET.
SCALE: 1/2"=1'-0"



3 CORNER PILASTER @ TOWER DETAIL
SCALE: 1/2"=1'-0"

GLAZING NOTE:

ALL GLAZING SHALL BE IMPACT RESISTANT AND SHALL BE RATED FOR USE IN A 130MPH WIND ZONE. INCLUDE ALL COSTS.



SCALE: 1/4"=1'-0"

RRA PROJECT NUMBER: 0821
 ISSUE FOR REVIEW: JULY 22, 2005
 ISSUE FOR CONSTRUCTION: AS NOTED
 CHECKED BY: RR
 SCALE: A-6.1

EXTERIOR ELEVATIONS & DETAILS

RUBY TUESDAY # 4734
 1-10E SERVICE ROAD at TYLER DRIVE (1-10 at Gaus Blvd)
 SLIDELL, LOUISIANA

ARCHITECT

RANDY REYNOLDS
 ARCHITECT

252 POTEAU PLACE, FRANKLIN, TENNESSEE 37064
 PHONE (615) 775-1175 • FAX (615) 592-1175

MARK	REVISION	DATE
	GLAZING	8.2.05