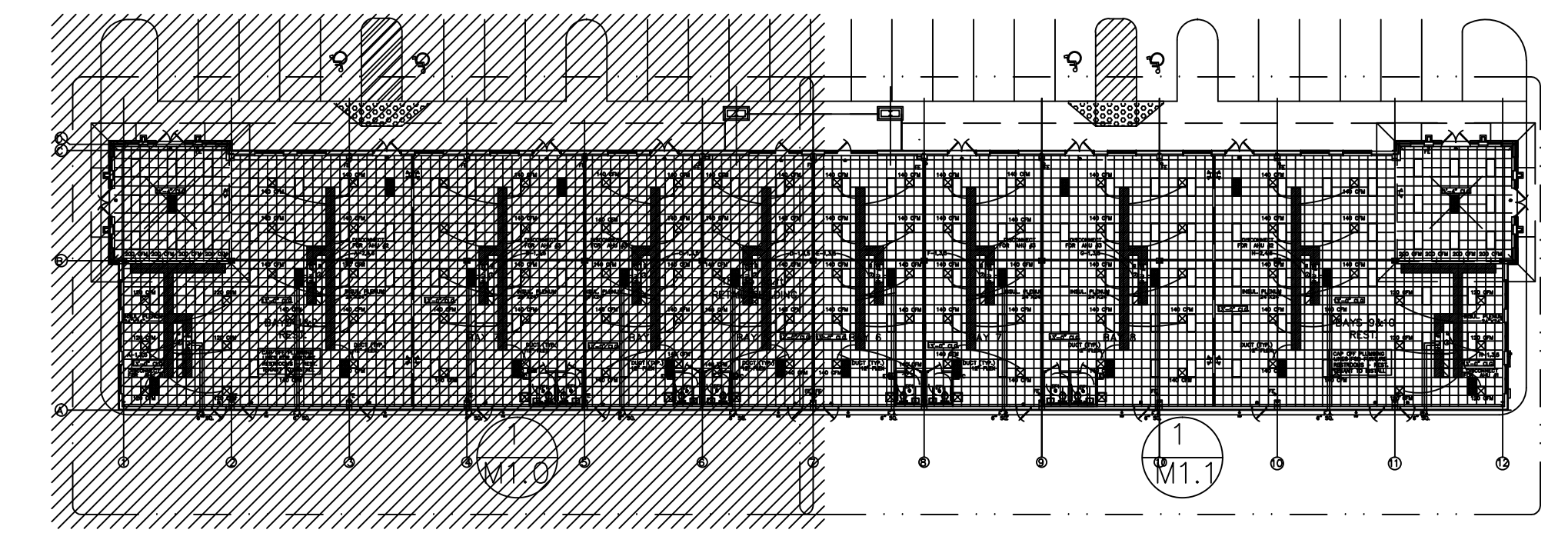


1 MECHANICAL - ENLARGED FLOOR PLAN
 1/8" = 1'-0"



MECHANICAL - KEY PLAN
 N.T.S.

ELECTRICAL/MECHANICAL LEGEND:

24"x48" FLUORESCENT LIGHT - 3 LAMP	24"x48" FLUORESCENT LIGHT - 3 LAMP WITH EMERGENCY BATTERY PACK	WALL MOUNTED FLUORESCENT LIGHT	ELECTRIC PANEL
24"x24" FLUORESCENT LIGHT - 2 LAMP	ILLUMINATED EXIT LIGHT	EXHAUST FAN WITH LIGHT	EXTERIOR DISCONNECT
24"x24" SUPPLY REGISTER	ILLUMINATED EXIT LIGHT W/ DIRECTIONAL ARROW	PHONE OUTLET @ 18" A.F.F.	ELECTRIC METER
SUPPLY REGISTER	EMERGENCY LIGHT	WALL MT. 120 DUPLEX RECEPTACLE @ 18" A.F.F.	HOSE BIBB
24"x24" RETURN REGISTER	CABLE TV CONNECTION	WALL MT. 120 DUPLEX RECEPTACLE @ 18" A.F.F. (GFI INDICATES GROUND FAULT INTERRUPT)	TELEPHONE PANEL
JUNCTION BOX	SINGLE POLE SWITCH	WALL MT. 220 RECEPTACLE	SURFACE MOUNTED WALL PACK AT 9'-0" A.F.F.
COMPUTER DATA	EXHAUST FAN	WALL MT. 120 QUADRELEX RECEPTACLE @ 18" A.F.F.	2X2 EXTERIOR LAY-IN
	DIGITAL THERASTAT	SURFACE MOUNTED FLUOR. LIGHT	RECESSED COMP. FLUOR. LIGHT

KVS
 architecture
 347 Girod Street, Mandeville, Louisiana
 985.674.3077 www.kvsarchitecture.com
 REVISIONS:

BUILDING SHELL FOR GAUSE RETAIL CENTER
 Gause Boulevard Slidell, Louisiana

DATE:	07.05.11
PROJECT No:	11008
DRAWING:	M1.0