

BAYS 1&2  
REST. STUB UP WATER FOR FUTURE PLUMBING

CAP OFF PLUMBING LINES FOR FUTURE RESTROOMS - REST. TENANT TO INSTALL

1" C/W

BAY 3

STUB OUT FOR FUTURE SERVICE SINK, T.W.H. & EWC INSTALLED BY TENANT

TENANT INSTALLED BY TOILET ROOMS, ROUGH IN

BAY 4

STUB OUT FOR FUTURE SERVICE SINK, T.W.H. & EWC INSTALLED BY TENANT

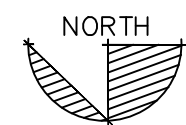
ROUGH IN TOILET ROOMS INSTALLED BY TENANT

BAY 5

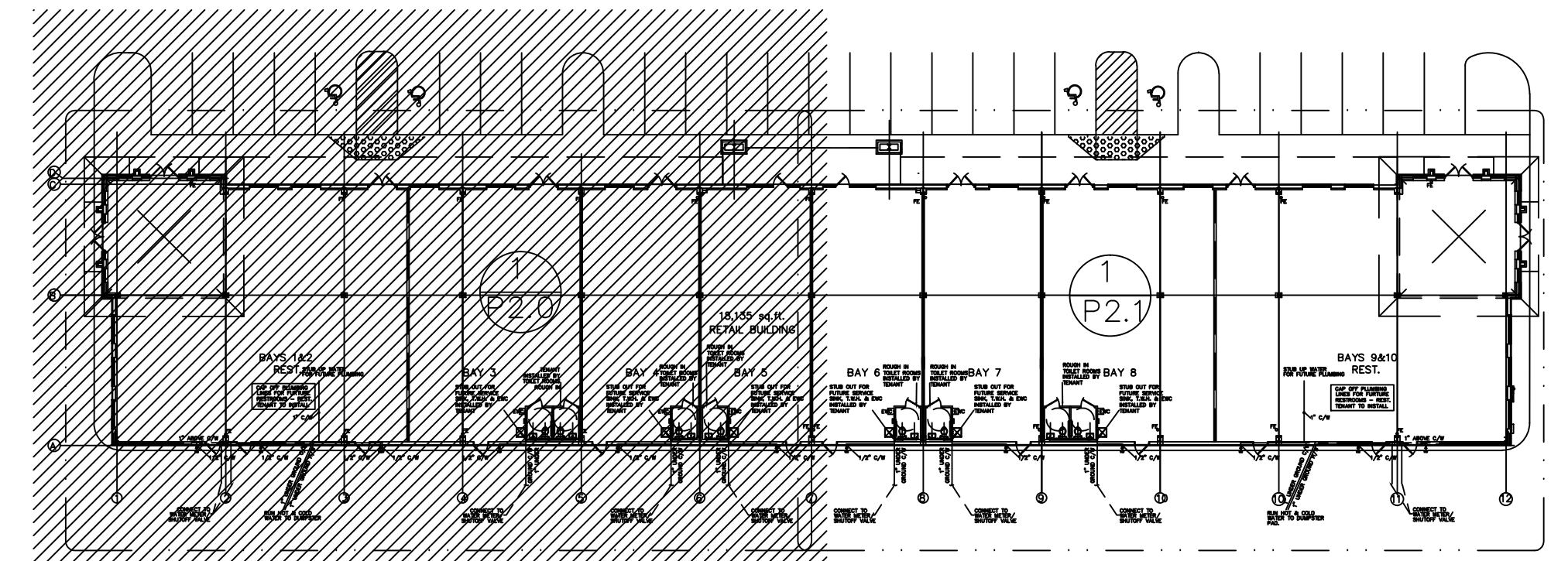
STUB OUT FOR FUTURE SERVICE SINK, T.W.H. & EWC INSTALLED BY TENANT

ROUGH IN TOILET ROOMS INSTALLED BY TENANT

18,135 sq.ft.  
RETAIL BUILDING



**1** PLUMBING - ENLARGED WATER SUPPLY PLAN  
1/8" = 1'-0"



PLUMBING - KEY PLAN  
N.T.S.

**KVS**  
architecture  
347 Girod Street, Mandeville, Louisiana  
985.674.3077 www.kvsarchitecture.com  
REVISIONS:

**BUILDING SHELL FOR  
GAUSE RETAIL  
CENTER**  
Gause Boulevard Slidell, Louisiana

DATE:  
07.05.11  
PROJECT No:  
11008  
DRAWING:

**P2.0**