

PLUMBING NOTES

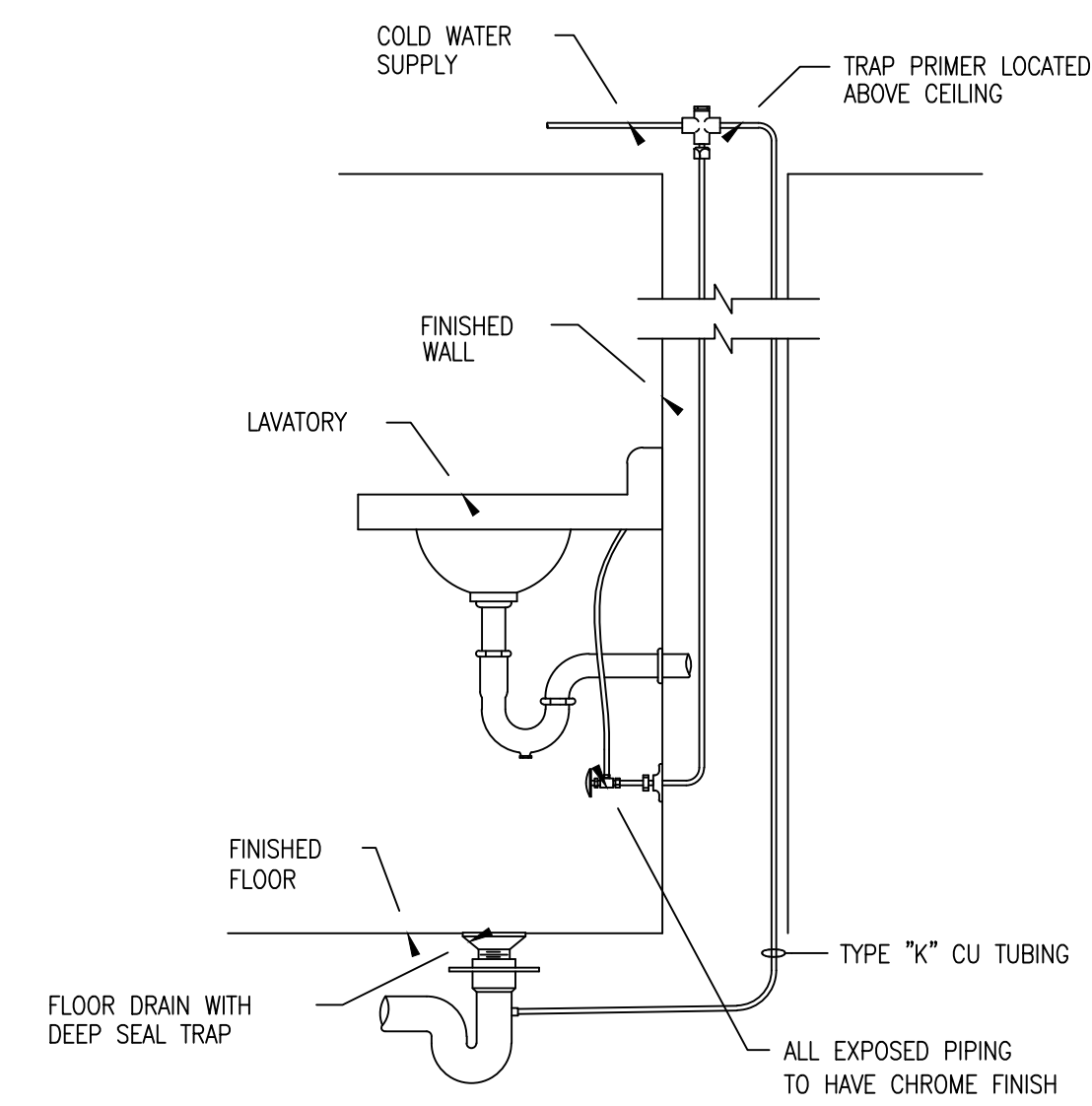
- THIS CONTRACTOR SHALL EXAMINE ALL OTHER SPECIFICATIONS, DRAWINGS, AND ALL FEATURES OF BUILDING CONSTRUCTION WHICH MAY AFFECT HIS WORK AND SHALL BE GOVERNED BY THESE OTHER SPECIFICATIONS, INCLUDING THE GENERAL CONDITIONS AND PARTICULAR INSTRUCTIONS TO ALL BIDDERS AND SUPPLIERS.
- ALL WORK SHALL BE EXECUTED AND INSPECTED IN STRICT ACCORDANCE WITH ALL LOCAL CODES AND/OR STATE CODES, LAWS, ORDINANCES, RULES AND REGULATIONS APPLICABLE TO THIS PARTICULAR CLASS OF WORK, AND EACH CONTRACTOR SHALL INCLUDE IN HIS PRICE ALL APPLICABLE SERVICE CHARGES, FEES, PERMITS, ROYALTIES, TAXES AND OTHER SIMILAR COSTS IN CONNECTION THEREWITH. CONTRACTOR SHALL BE SOLELY RESPONSIBLE FOR ALL SYSTEMS AND INSTALLATION TO COMPLY WITH ALL APPLICABLE CODES AND AUTHORITIES HAVING JURISDICTION.
- PRIOR TO INSTALLATION OF PLUMBING, CONTRACTOR SHALL EXAMINE AND VERIFY ALL CONDITIONS ABOVE AND BELOW THE CEILING WHICH MAY INTERFERE WITH THE PLUMBING SYSTEM AND NOTIFY THE ARCHITECT OF ANY CONFLICT ENCOUNTERED. CONTRACTOR SHALL PROVIDE ALL OFFSETS ETC. WHICH MAY BE REQUIRED, WITHOUT ADDITIONAL COST TO THE OWNER.
- SET SLEEVES UNDER DIRECTION OF GENERAL CONTRACTOR.
- PIPING LAYOUT IS ONLY SCHEMATIC AND PROVIDES THE INTENT OF THE PLUMBING SYSTEM. EXACT LOCATION OF PIPES TO BE COORDINATED WITH BUILDING STRUCTURE AND WORK OF OTHER CONTRACTORS.
- CONCEAL PIPING WHEREVER POSSIBLE.
- RUN ALL WATER LINES LEVEL.
- ALL FIXTURES TO BE EQUIPPED WITH STOP VALVES IN ACCESSIBLE LOCATIONS.
- ALL WASTE & VENT LINES SHALL BE PVC DWV PIPING, AND BE OF SIZES AND GENERAL ARRANGEMENT AS SHOWN ON THE DRAWINGS.
- ROUGH IN ALL PIPING THRU FACE OF WALL WHERE POSSIBLE.
- ALL WATER PIPING SHALL RISE ABOVE SLAB FOR ALL PIPE CONNECTIONS. MAKE NO CONNECTIONS TO WATER PIPING UNDER SLAB. ALL WATER PIPE FITTINGS SHALL BE MADE WITH BRIDGETT "NO LEAD" SOLDER, OR EQUAL.
- PLUMBING CONTRACTOR TO MAKE ALL FINAL CONNECTIONS NECESSARY FOR COMPLETE AND OPERATIONAL SYSTEMS INCLUDING ALL CONNECTIONS OF SANITARY AND WATER TO ALL EQUIPMENT REQUIRING CONNECTION TO PLUMBING SYSTEM.
- PLUMBING CONTRACTOR TO VERIFY DEPTH OF EXISTING SANITARY SEWER MAIN AND ENSURE THAT ALL NEW SANITARY PIPING SHALL SLOPE AS REQUIRED FOR PROPER UNOBSTRUCTED FLOW TO EXISTING SANITARY SEWER MAIN.
- THIS CONTRACTOR SHALL EXECUTE ALL WORK SO THAT IT PROCEEDS WITH A MINIMUM OF INTERFERENCE WITH OTHER TRADES AND NORMAL FUNCTIONING OF EXISTING FACILITIES.
- THIS CONTRACTOR SHALL COORDINATE WITH ALL OTHER TRADES ALL REQUIRED OPENINGS AND EXCAVATIONS. WHERE POSSIBLE, ALL OPENINGS IN FLOORS, WALLS AND ROOFS SHALL BE DESIGNED INTO THE STRUCTURE INITIALLY USING SLEEVES, CURBS, ETC. WITH CUTTING AND PATCHING HELD TO A MINIMUM.
- VERIFY EXACT EQUIPMENT REQUIREMENTS AND ROUGH-IN DIMENSIONS BEFORE BEGINNING WORK. FIELD VERIFY ALL EXISTING CONDITIONS.
- COORDINATE ROUTING AND LOCATIONS OF ALL PLUMBING WITH OTHER TRADES.
- ALL ITEMS PROJECTING THROUGH THE ROOF SHALL BE FLASHED A MINIMUM OF 12" ABOVE THE ROOF.
- PROVIDE AND INSTALL VACUUM BREAKERS AT EACH FIXTURE WITH HOSE THREAD CONNECTIONS AND AT ALL HOSE BIBBS AND WALL HYDRANTS.
- PROVIDE AND INSTALL DI-ELECTRIC UNIONS AT ALL CONNECTIONS OF DISSIMILAR METALS.
- PROVIDE CLEANOUTS IN WASTE LINES AT A MAX. OF EVERY 80' OR AT EACH CHANGE IN DIRECTION OF MORE THAN 45° AS REQUIRED BY CODE.
- CONTRACTOR SHALL VERIFY THAT ALL PIPING, AS SHOWN ON THESE DRAWINGS, WILL NOT CONFLICT WITH ANY DRAINS, SCUTTLES, JOINTS, VENTS, ETC....

PLUMBING FIXTURE SCHEDULE

MARK	FIXTURE	CONNECTIONS			MANUFACTURER & MODEL	DESCRIPTION	MOUNTING HEIGHT
		WASTE	CW	HW			
P-1	WATER CLOSET (HANDICAPPED)	4"	3/4"	-	AMERICAN STANDARD 2998.012	FLOOR MOUNTED BOTTOM OUTLET, VITREOUS CHINA, TANK TYPE WITH ELONGATED BOWL. PROVIDE OPEN FRONT SEAT (LESS COVER), TWO BOLT CAPS, FLEXIBLE SUPPLY AND STOP.	BOWL HEIGHT IS 16-1/2" A.F.F. MEETS ADA REQUIREMENTS WHEN TOP OF SEAT IS 17" A.F.F.
P-2	LAVATORY (HANDICAPPED)	1-1/4"	1/2"	1/2"	AMERICAN STANDARD 0355.012 MOEN 8810 FAUCET	WALL HUNG, VITREOUS CHINA LAVATORY. PROVIDE CHROME FAUCET WITH WRIST BLADE HANDLES, CHROME PLATED TAILPIECE, P-TRAP OFFSET TO WALL, GRID DRAIN, FLEXIBLE SUPPLIES AND STOPS. INSULATION KIT EQUAL TO TRUEBRO #101.	MEETS ADA REQUIREMENTS WHEN RIM HEIGHT IS 34" A.F.F.
P-3	MOP SINK	3"	1/2"	1/2"	FLORESTONE MSR-2424 MOEN 8124	24"x24" INJECTION MOLDED MOP RECEPTOR WITH HEAVY DUTY WALL MOUNTED FAUCET (WITH WALL BRACE, BUCKET HOOK AND THREADED SPOUT). PROVIDE GRID STRAINER AND 5' HOSE WITH WALL CLAMP.	FLOOR MOUNTED
FD	FLOOR DRAIN	3"	-	-	ZURN ZN-415-P	DURA-COATED CAST IRON BODY, BOTTOM OUTLET FLOOR DRAIN WITH TYPE B* POLISHED NICKEL BRONZE GRID STRAINER, 1/2" TRAP PRIMER CONNECTION AND REMOVABLE SEDIMENT BUCKET.	
HB1	HOSE BIBB	-	3/4"	-	JOSAM 71000	HYDRASAN 1 W/ VACUUM BREAKER; NON-FREEZE IN CAST BRONZE BOX WITH LATCHING COVER; TEE KEY OPERATED.	MOUNTED AT 24" A.F.F.
HB2	FLOOR DRAIN	-	3/4"	-	JOSAM 71050	HYDRASAN 1 W/ VACUUM BREAKER; NON-FREEZE; TEE KEY OPERATED.	MOUNTED AT 24" A.F.F.
TWH	TANKLESS WATER HEATER	-	3/8"	3/8"	EEMAX SP2412	120/280V-18, 2.4 KW, INSTANTANEOUS WATER HEATER TO HEAT 0.5 GPM AT A TEMPERATURE RISE OF 33 F. UNIT SHALL HAVE ABS-UL 94V0 RATED COVER, REPLACEABLE ELEMENT AND FILTER.	MOUNTED ON WALL NEAR MOP SINK. STORAGE TANKS ARE PROHIBITED.
AD	AREA DRAIN	4"	-	-	JOSAM 35330	COATED CAST IRON DRAIN W/DOUBLE DRAINAGE FLANGE, SEEPAGE SLOTS, BOTTOM OUTLET. SQUARE TOP, MEDIUM DUTY SECURED GRATE AND REMOVABLE DEEP SEDIMENT BUCKET.	INSTALL FLUSH WITH FINISHED GRADE.

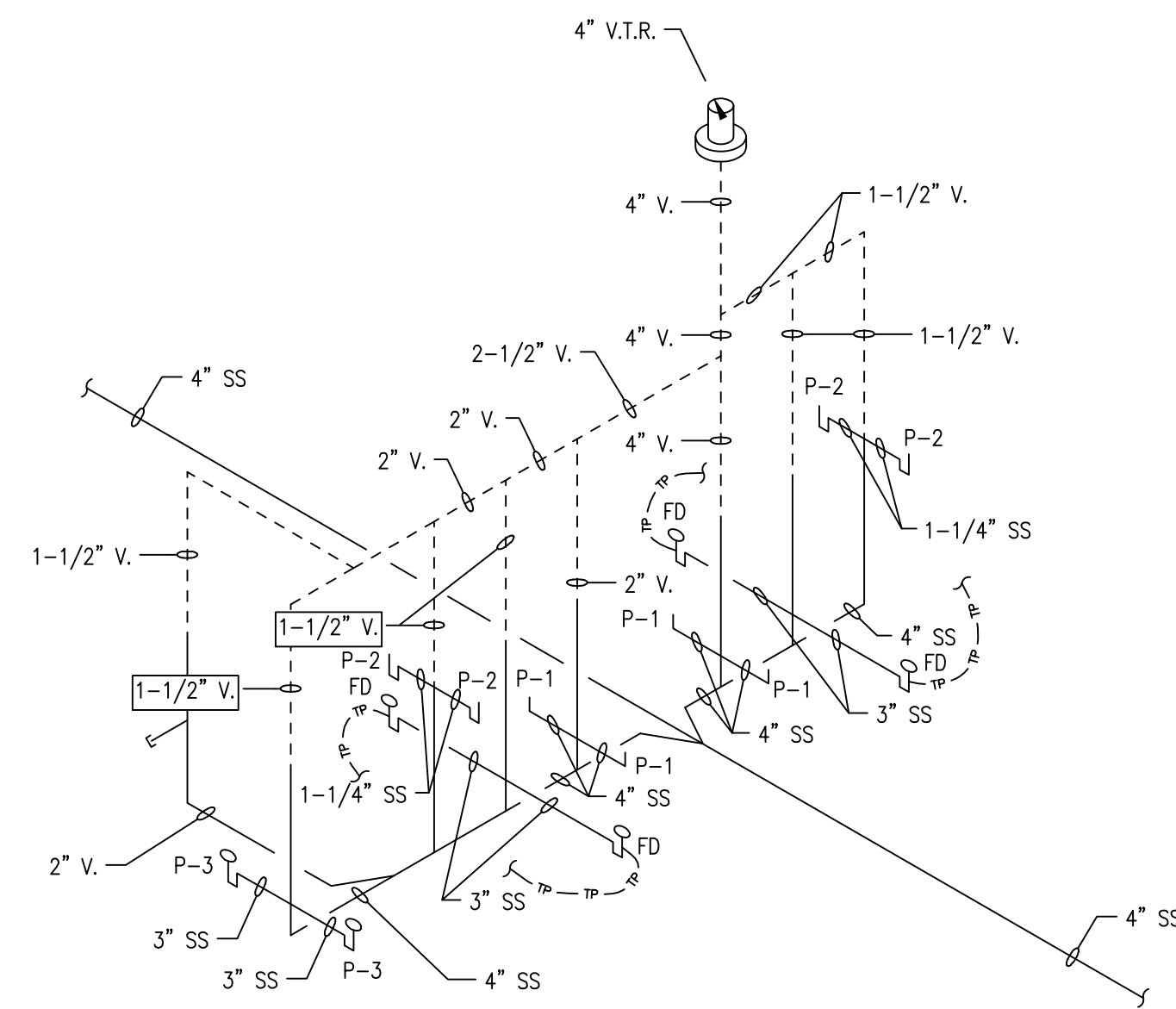
PLUMBING SYMBOL LEGEND

	COLD WATER (CW)
	HOT WATER (HW)
	SANITARY VENT (V.)
	4" SANITARY WASTE (SS)
	1-1/2" WASTE
	TRAP PRIMER PIPING
	PIPING TURN UP
	PIPING TURN DOWN
	P-TRAP CONNECTION
	VALVE
	V.T.R.
	FLOOR DRAIN (FD)
	WATER CONNECTION



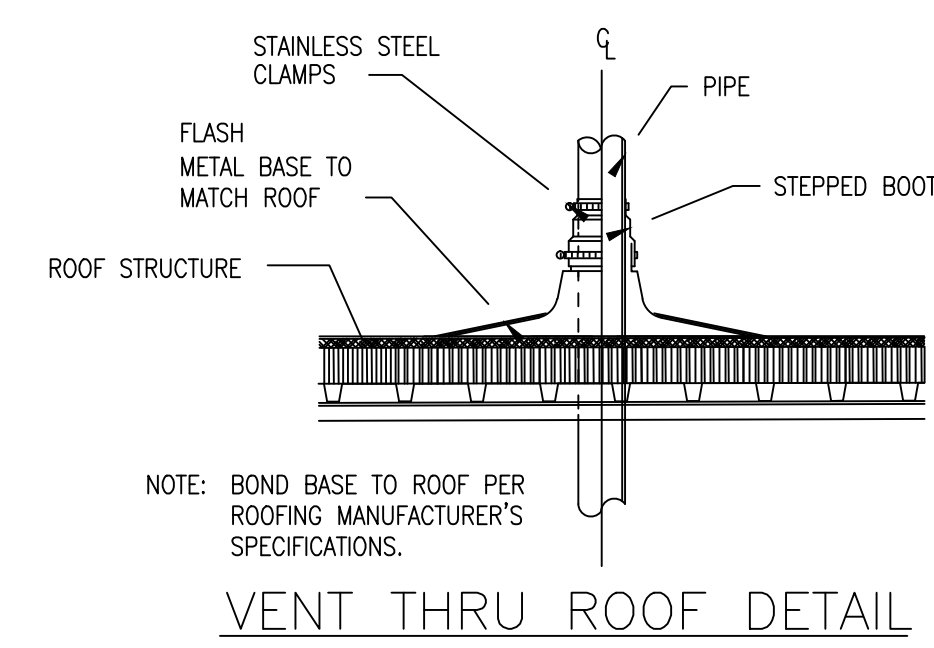
TRAP PRIMER DETAIL

NOT TO SCALE



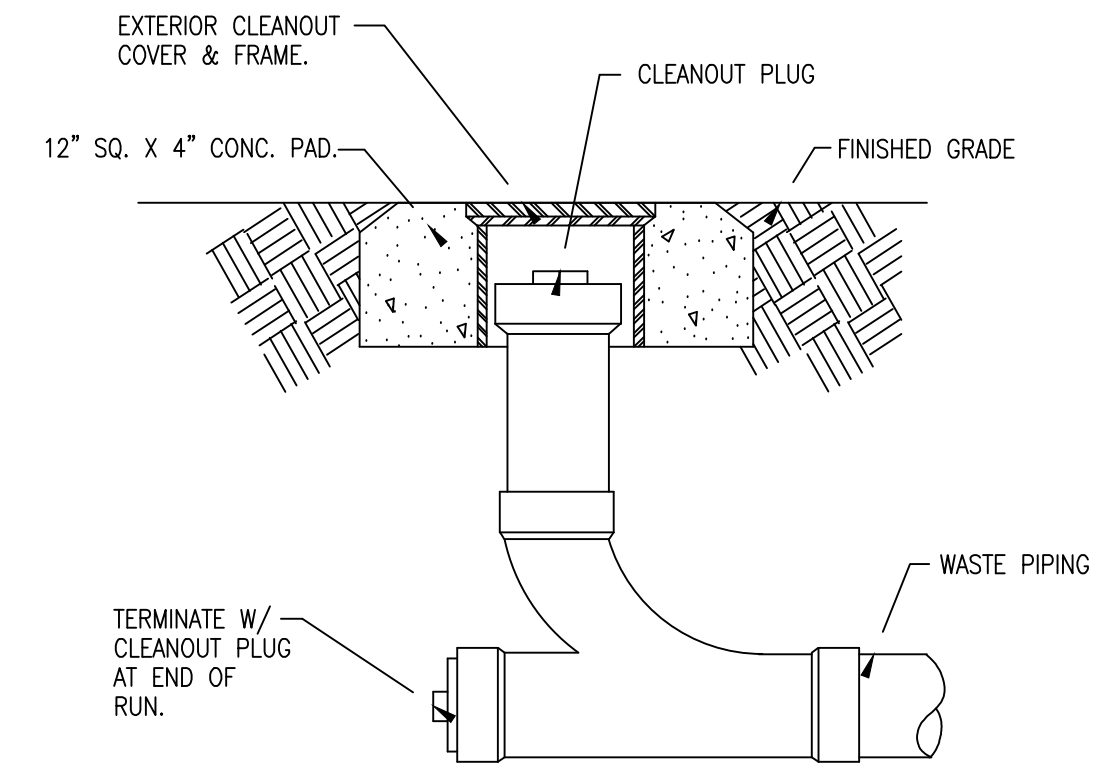
TYPICAL SANITARY WASTE RISER

NOT TO SCALE



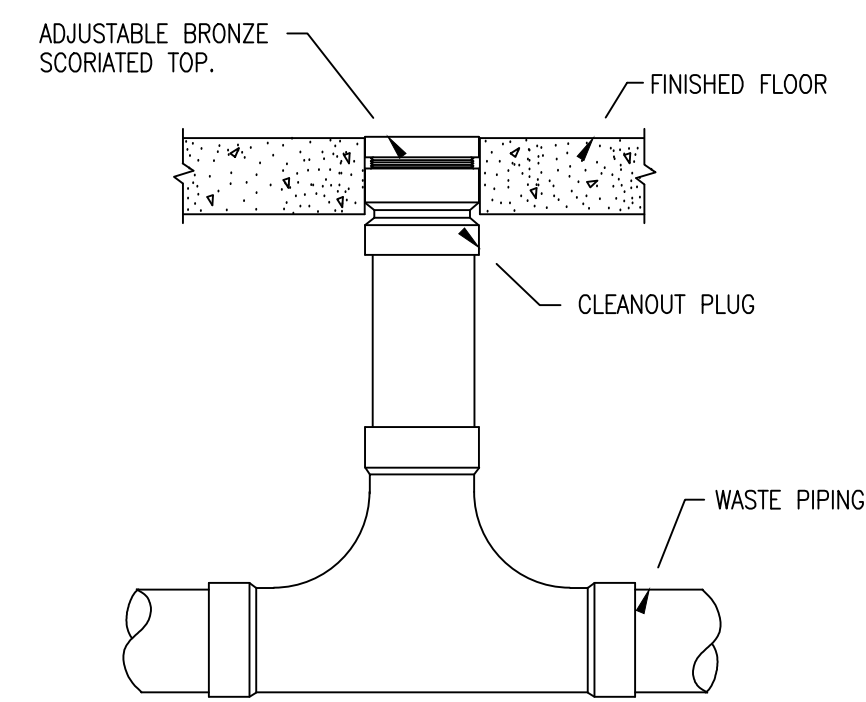
VENT THRU ROOF DETAIL

NOT TO SCALE



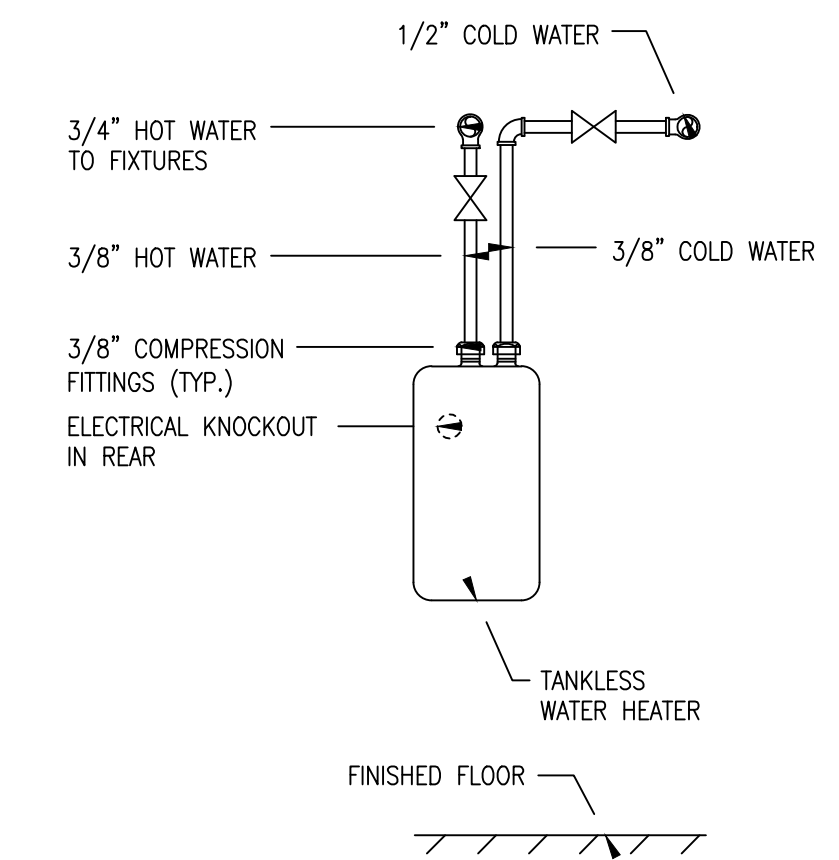
EXTERIOR CLEANOUT DETAIL

NOT TO SCALE



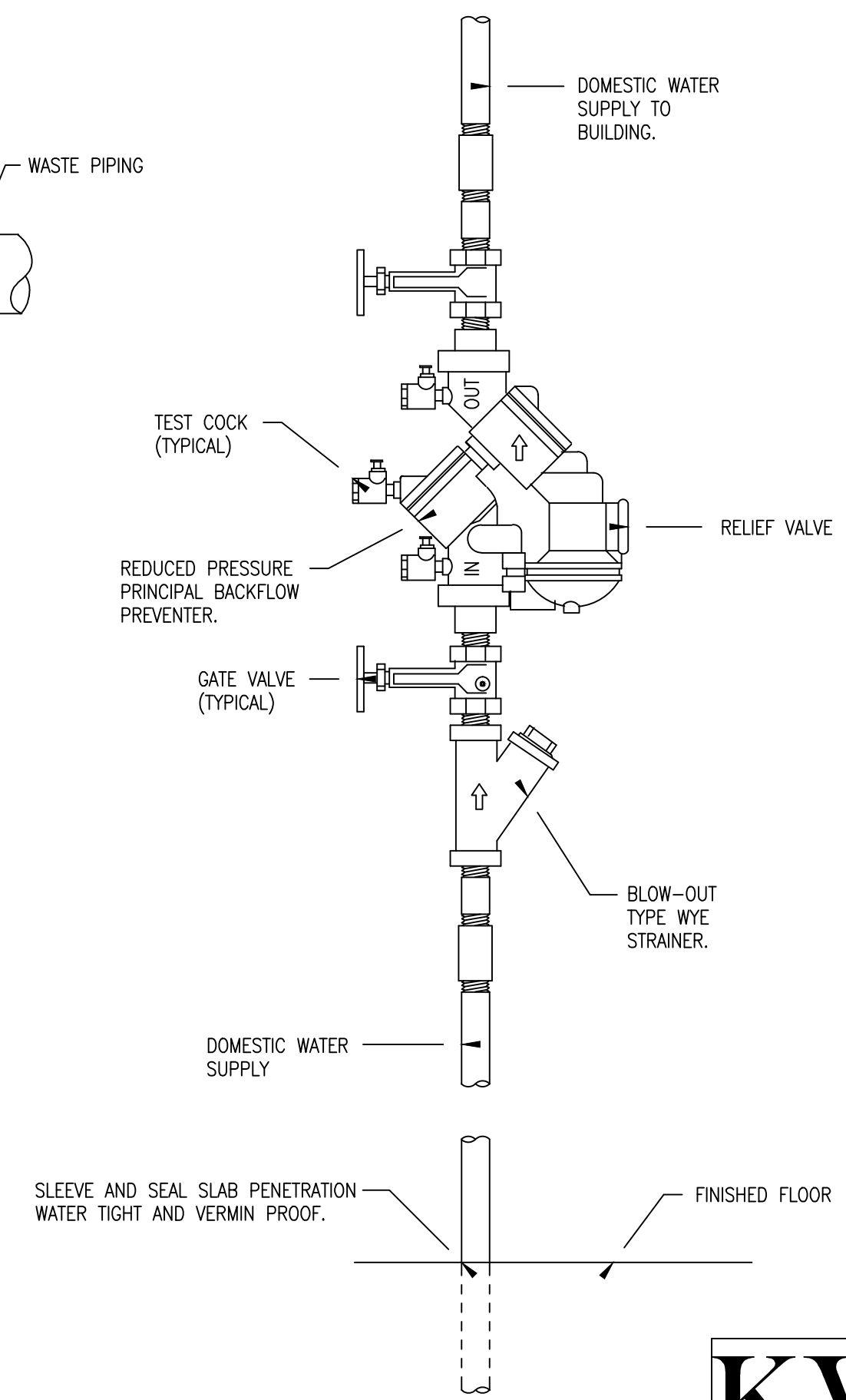
2-WAY FLOOR CLEANOUT DETAIL

NOT TO SCALE



TANKLESS WATER HEATER DETAIL

NOT TO SCALE



BACKFLOW PREVENTER DETAIL

NOT TO SCALE

KVS
architecture
347 Girod Street, Mandeville, Louisiana
985.674.3077 www.kvsarchitecture.com
REVISIONS:

**BUILDING SHELL FOR
GAUSE RETAIL
CENTER**

Gause Boulevard Slidell, Louisiana

DATE:

07.05.11

PROJECT No:

11008

DRAWING:

P3.0