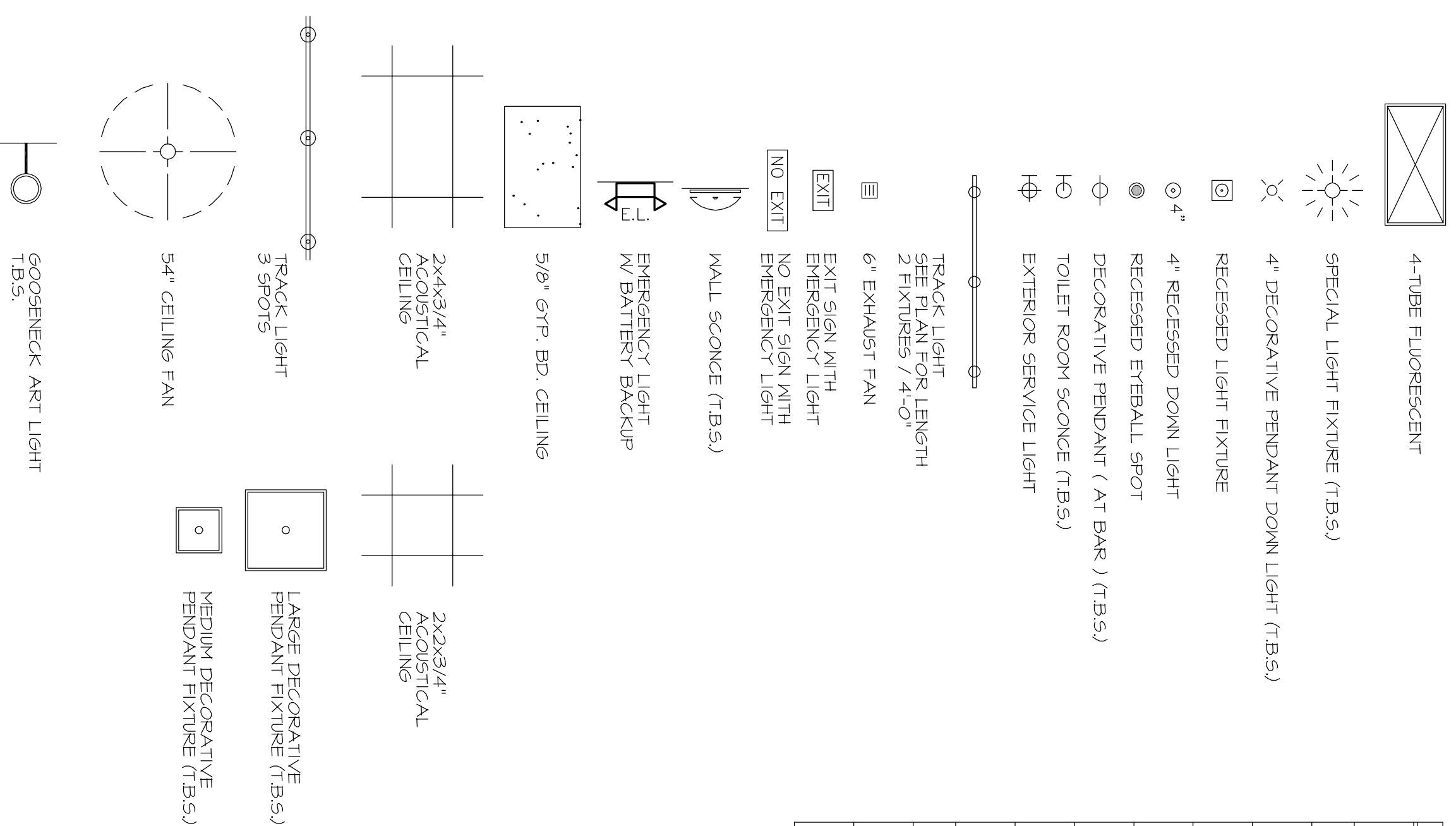


FIGURE LEGEND



- NOTES:
 1. ALL T.B.S. FIXTURES TO BE SELECTED BY OWNER
 2. ALL SCONCES, CHANDELIERS, GOOSENECK & PENDANTS TO BE ON DIMMERS

ROP GENERAL NOTES

1. CEILING GRID TO BE UNIFORMLY PAINTED WHERE SPECIFIED.
2. ALL FLUORESCENT LIGHTING FIXTURES SHALL HAVE ENERGY SAVING LAMPS AND BALLASTS. WALL WASHERS, FIRE ALARM SIGNAL DEVICES, SPEAKERS, AND EXIT LIGHTS ARE TO BE LOCATED AS SHOWN. CONTRACTOR TO NOTIFY ARCHITECT IMMEDIATELY OF ANY DISCREPANCY.
3. ALL DIMENSIONS ARE FROM FACE OF STUD UNLESS NOTED OTHERWISE.
4. ALL DIMENSIONS ARE FROM FACE OF STUD UNLESS NOTED OTHERWISE.
5. WHERE MULTIPLE SWITCHES OCCUR (SWITCHES, DIMMERS, OR BOTH), GANG GROUPS OF SWITCHES IN SAME BOX WITH FAN CONTROL, AND HANGERS SHALL BE MOUNTED AT SAME HEIGHT.
6. HANGERS OVER PENETRATING AIR HANDS, EXHAUST FANS, ETC.) SHALL BE MOUNTED STRAIGHT AND ALIGNED.
7. CONTRACTOR TO VERIFY CODE REQUIREMENTS FOR PLACEMENT OF ALL FIRE ALARMS, STROBES, ETC. AND SHALL INSTALL SAME PER ALL APPLICABLE CODE REQUIREMENTS.
8. ALL LIGHTING LENSES SHALL BE CLEANED SUCH THAT THEY ARE FREE OF DIRT AND FINGERPRINTS.
9. INDICATES SWITCHES LOCATIONS WITH ACCOMPANYING NUMBER INDICATING FIXTURES TO BE CONTROLLED FROM THIS LOCATION. THE CONTRACTOR IS RESPONSIBLE TO DETERMINE THE NUMBER OF SWITCHING DEVICES REQUIRED TO CONTROL THE FIXTURES INDICATED IN A LIGHTING ZONE.
10. SWITCHES SHALL BE MOUNTED AT 48\"/>

LIGHTING FIXTURE SCHEDULE

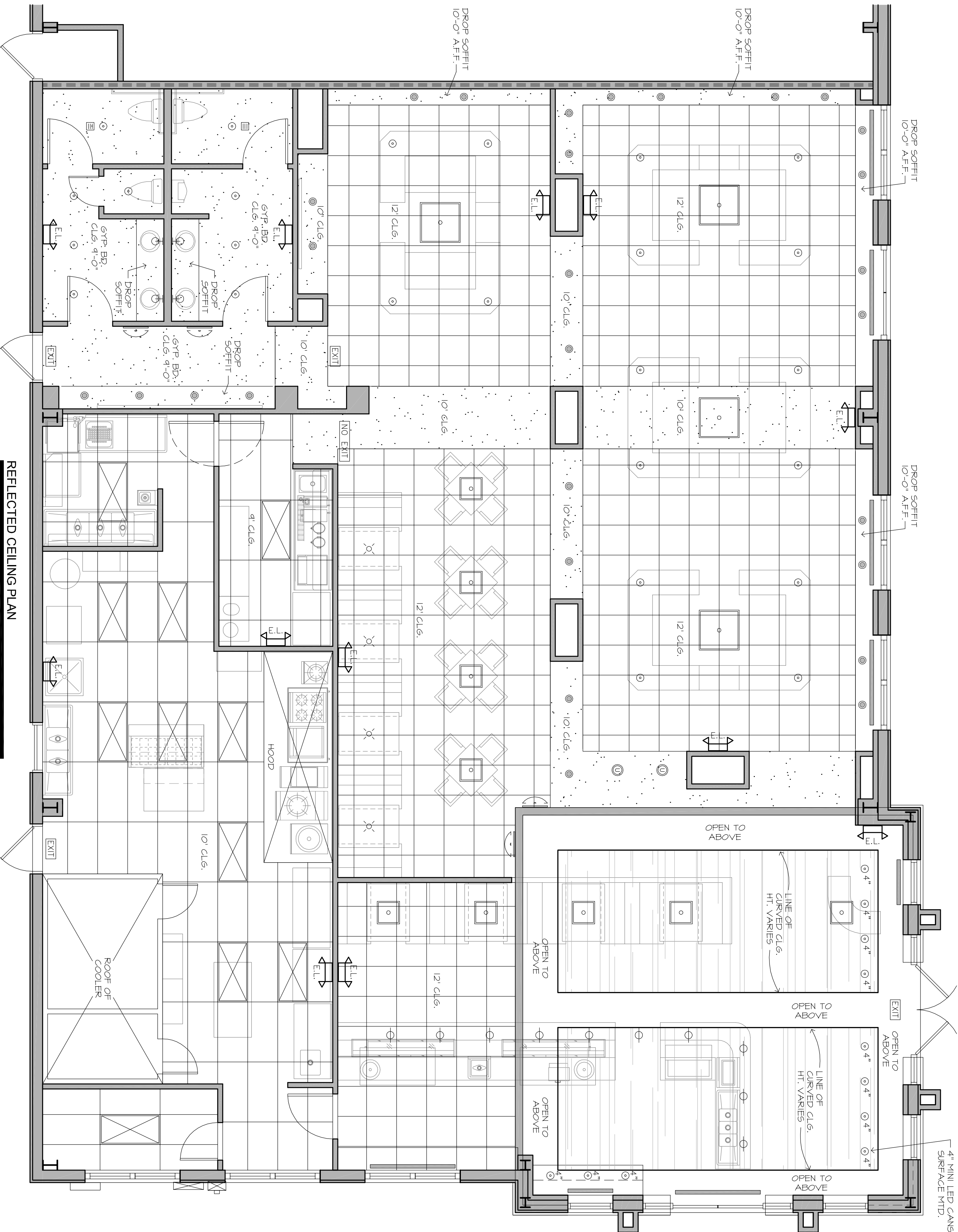
MARK	SYMBOL	MATERIAL	LOCATION	DESCRIPTION	SUPPLIER
C		2x4" FLUORESCENT HOUSING (ENERGY STAR RATED)	BACK KITCHEN AREA	2x4" FLUORESCENT CEILING MOUNT FLUORESCENT HOUSING WITH ONE PIECE LENS, 2-LAMP ELECTRONIC BALLAST. MODEL: F3218	AMERICAN FLUORESCENT CORPORATION
A					
D		TRACK LIGHT-SEE DRAWING FOR LENGTHS	BAR & DINING	HALO 6" ROUND RECESSED CEILING MOUNT DOWN LIGHT WITH DIMMING BALLAST AND BLACK BAFFLE. MODEL: TR500110, 50.0W.	COOPER LIGHTING
B		PENDANT LIGHTS	DINING / HALL	TO BE SELECTED	TECH LIGHTING
RX		EMERGENCY LIGHTS	HALLWAY, KITCHEN	FIXED LAMP TWO-LIGHT EMERGENCY FIXTURE, WATT NONINCANDESCENT LAMPS WITH UNIT COMPACT THERMOPLASTIC LED WHITE TRIM, GREEN LETTERS.	DUALITE SLL-8H OR APPROVED EQUAL
RX1		EXIT SIGN	EXITS	SINGLE-FACED SELF-ILLUMINATING EXIT SIGN	COOPER WIRING DEVICES
		DIMMER SWITCH	KITCHEN/DINING ROOM/HALLWAY	LUTRON LUMERA 600-WATT SINGLE POLE PRESET DIMMER SWITCH, MODEL: LG-600PHM-BLSS, ITEM #23939600 WITH PRESSEL LENS. 180 DEGREE WALLBOX MOTION SENSOR.	LOWE'S
		MOTION SENSING WALL SWITCH ADD TO RESTROOM & OFFICE	BACK KITCHEN AREA/RESTROOMS	115VXMT-120 VOLT WITH 404XSG-BLACK SUSP. AND 409 WITH GLASS REFLECTOR.	COOPER WIRING DEVICES
		9" METAL HALIDE PENDANT, 42W	DINING		LIGHTOLIER
		ULTRAVIOLET LIGHT			

CEILING FINISH LEGEND

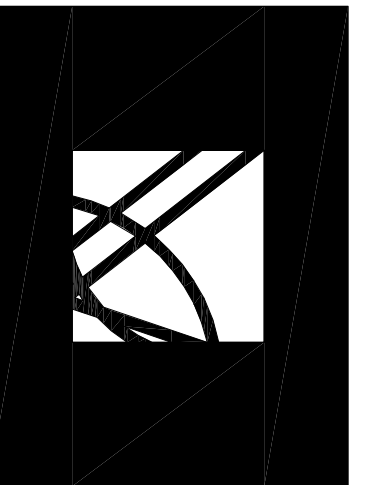
- PT-1 ARMSTRONG CIRRUS REGULAR #394, 24" x 24" x 3/4" ACOUSTICAL CEILING TILES. 15/16" GRID. PAINT.
- PT-2 ARMSTRONG #670 VINYL CRYSAL 3/4" x 24" x 48" SQUARE LAY-IN PANELS WITH WHITE VINYL STIPPLE PATTERN AND SQUARE EDGE.
- ACOUSTICAL CEILING GRID SHALL BE EQUAL TO ARMSTRONG PRELUDE 15/16" GRID. DIMENSIONS: 24" x 24" x 3/4". DOUBLE-ARB 901-0P GALVANIZED STEEL. INTERMEDIATE-DUTY, HIGH-THERMIDITY FINISH. ALL FIXTURES PROVIDED & INSTALLED BY G.C.

SUSPENDED CEILING

1. TRIM: INSTALL EDGE MOLDING AT INTERSECTION OF CEILING AND VERTICAL SURFACES. USING LONGEST PRACTICAL LENGTHS. MITER CORNERS. PROVIDE EDGE MOLDINGS AT JUNCTIONS WITH OTHER INTERSECTIONS.
2. ACOUSTICAL PANEL INSTALLATION: INSTALL ACOUSTICAL PANELS WITH EDGES IN CLOSE CONTACT WITH METAL SUPPORTS AND IN TRUE ALIGNMENT.
3. VARIATIONS FROM FLAT AND LEVEL SURFACE: 1/8"-INCH IN 10 FEET.
4. VARIATION FROM PLUMB OF GRID MEMBERS: AS CAUSED BY ECCENTRIC LOADS TWO DEGREES MAXIMUM.
5. INSTALL SYSTEM AFTER MAJOR ABOVE-CEILING WORK IS COMPLETE.
6. BUNDLED STRAP LINES FOR DRINK SYSTEM. VENDOR FURNISHED AND VENDOR INSTALLED.



REFLECTED CEILING PLAN
 SCALE: 1/4"=1'-0"



W.Architect, P.A.

4100 LEGIONARY DRIVE, SUITE 240
 DUBLIN, FLORIDA 32541

850.865.0470

Member of American Institute of Architects

DBPR NBR AA 2600-1732

Copyright 2013 W.Architect, P.A.

PROJECT: W. ANDREW POPE
 LOUISIANA LICENSE 30633

STIX
 HIBACHI & SUSHI
 RESTAURANT
 CAMELLIA SQUARE
 SLIDELL, LOUISIANA

ISSUED FOR:

- SCHEDULES
- DESIGN DEVELOPMENT
- 60% REVIEW
- 100% CONTRACT DOCUMENTS
- DEVELOPMENT ORDER
- PRICING
- PERMIT
- CONSTRUCTION

DATE: _____
 NO. OF PAGES: _____

SHEET TITLE: REFLECTED CEILING PLAN

REVISIONS:

DATE	REMARKS
MAY 30 2013	

SHEET NO. A-2