

FLOOR FINISH AND MATERIAL SCHEDULE

ITEM NO.	MATERIAL	DESCRIPTION	SUPPLIER	PROVIDED	INSTALLED
EP-1	EPOXY FLOOR & 6" BASE (KITCHEN, BAR & PIZZA AREA FLOORING)	3M COLORQUARTZ AGGREGATE FOR SEAMLESS FLOORS. COLOR: OCHER. 2-6023 TAN AND 1-9073 WHITE. FOR USE WITH MEDCO CRYSTAL COAT EPOXY FLOORING, OR EQUAL.	3M CORPORATE 800-607-7584 MEDCO PRODUCTS 50-CO LUNCH CORP. 562-903-9626 OR EQUAL.	GENERAL CONTRACTOR	GENERAL CONTRACTOR

FINISH NOTES

- Toilet rooms tile floor, base and 48" wainscot**
- bathroom floor shall be 12" x 12" tile and 6" base on the wainscot, 1.5S. ; Avoid tile through Lowe's and Home Depot. (Stock 4 pieces approximately 12" each, 48" ht. total). Butt joint - No grout directly to existing wall with panel adhesive - No wire mesh required.

- MICROFLEX PRODUCT DESCRIPTION AND USE: OR EQUAL**
- PRODUCTS:**
- SGRAFFINO (REGULAR AND SUPER FINE GREY BASE)
 - ARAPIDO (GREY BASE)
 - CP1000 (ACTIVATOR AND PRIMER)
 - DECO SEAL
 - WATER BASED EPOXY

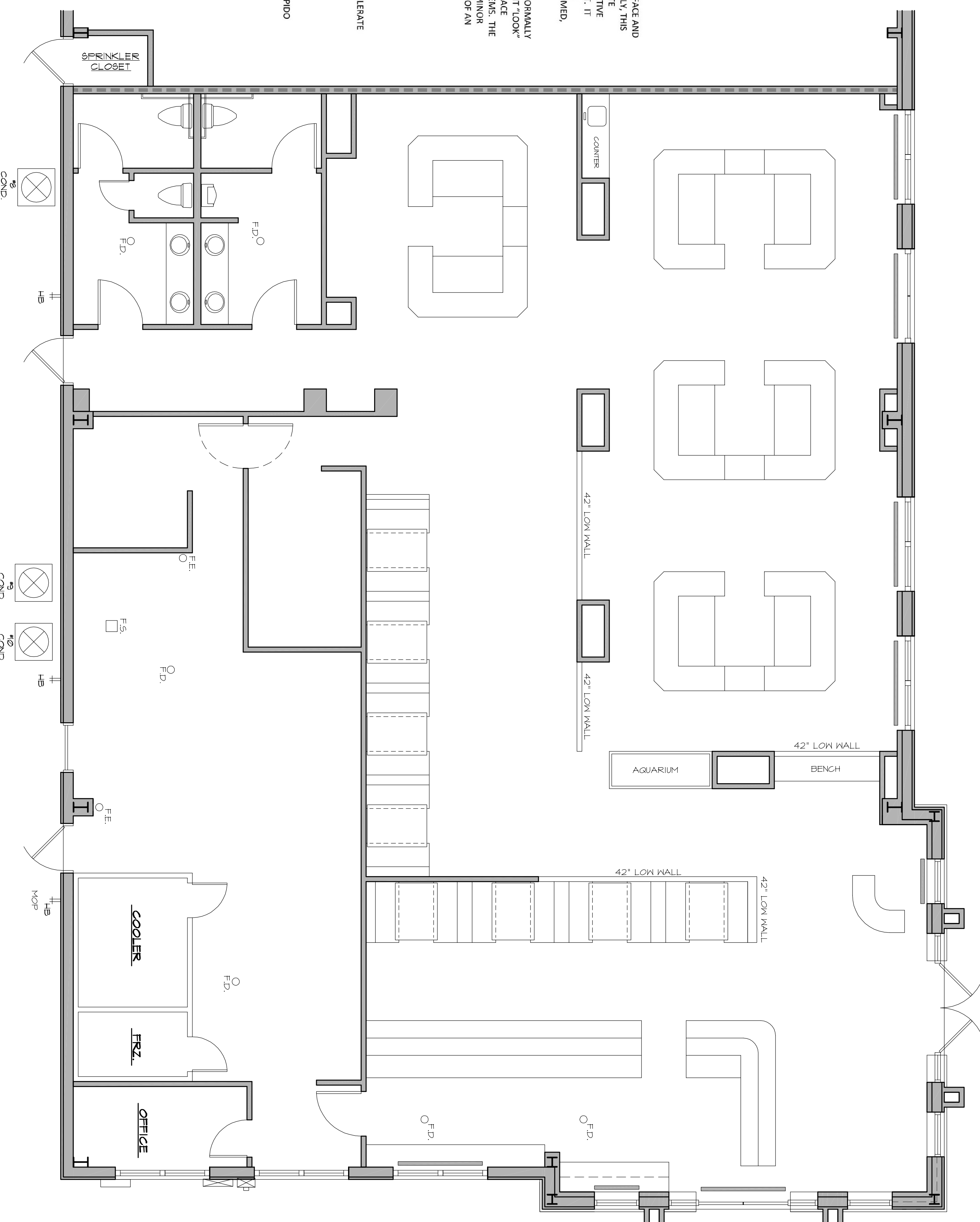
SGRAFFINO AND ARAPIDO: CEMENT BASED COMPOUNDS THAT PROVIDES A SMOOTH CONCRETE SURFACE AND CAN BE APPLIED AT PAPER-THIN THICKNESS. WHEN COMBINED WITH CP1000 ACRYLIC ACTIVATOR ONLY, THIS PRODUCT PRODUCES THE IDEAL ULTRA THIN RESURFACER FOR BOTH INTERIOR AND EXTERIOR CONCRETE APPLICATIONS. IT IS A VERSATILE AND EXCELLENT WEARING CONCRETE SURFACE. NUMEROUS DECORATIVE EFFECTS CAN BE ACHIEVE THROUGH THE CREATIVE USE OF A TROWEL, SPONGE, ROLLER, OR SPRAY UNIT. IT PROVIDES A FAST SOLUTION FOR INTEGRALLY COLORING AND RESURFACING OF INTERIOR OR EXTERIOR CONCRETE. ALSO, IT IS A COST-EFFECTIVE SOLUTION FOR RESURFACING NEW OR OLD CONCRETE, BROOMED, TROWELED, OR CREATING A MULTI LAYERED WEATHERED FRESCO FINISH.

USES: THE MICROFLEX IS USED TO RESURFACE AND DECORATE CONCRETE SURFACES WHICH WOULD NORMALLY NOT BE GOOD CANDIDATES FOR ADDITION OF COLOR AND FINISHES ONLY OR TO ACHIEVE A CONSISTENT "LOOK" ACROSS MANY FLOORS WITH DIFFERENT CONCRETE FINISHES. IT IS AN IDEAL WAY TO ADD A NEW SURFACE FINISH OR TEMPLATE AND THE ADDITION OF AN INTEGRAL COLOR OR/AND TOPICAL COLORATION SYSTEMS. THE MICROFLEX SYSTEM SHOULD BE USED ON AN OVERALL SMOOTH OR LEVEL SURFACE REQUIRING ONLY MINOR LEVEL ADJUSTMENTS OR REPAIRS DUE TO ITS THIN APPLICATION THICKNESS OF APPROXIMATELY 1/16" OF AN INCH.

CHEMICAL COMPOSITION: PORTLAND CEMENT AND MODIFIED WITH POLYMER AND ADDITIVES.
COLORS: SEE FLOOR FINISH PLAN - SHT A-1.3.

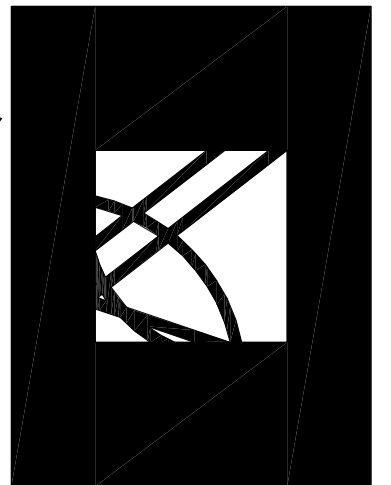
TECHNICAL DATA: PLEASE REFER TO TECHNICAL DATA SHEETS.
CONDITIONS: HIGHER TEMPERATURES, LOWER HUMIDITY, AND INCREASED AIR MOVEMENT WILL ACCELERATE CURE TIMES. LOWER TEMPERATURES AND HIGHER HUMIDITY WILL LENGTHEN CURE TIME.

- SUMMARY OF WORK TO BE DONE FOR RED BRICK PIZZA CONCRETE FLOOR COLORATION SYSTEM**
- TAPE AND MASKING OFF OF BORDERS, WALLS, APPLIANCES AND EQUIPMENT
 - APPLICATION OF PRIMER
 - DETERMINING THE CONDITION OF CONCRETE FLOOR APPLY ONE OR TWO LAYERS SGRAFFINO OR ARAPIDO
 - APPLICATION OF TWO LAYERS OF SEALER - TOP COAT A CLEAR WATER EPOXY SEALER
 - DETAIL AND CLEAN-UP



FLOOR FINISH PLAN

SCALE: 1/4"=1'-0"



W. ARCHITECT, P.A.

4100 LEGIONARY DRIVE, SUITE 240
 DUSTIN, FLORIDA 32541
 850.865.0470
 Member of American Institute of Architects
 DBPR NBR AA 2600-1732

Copyright 2013 **W. Architect, P.A.**
 Pursuant to the Florida Statutes, Chapter 481, Part 1, the undersigned hereby certifies that the undersigned is the author of the drawings and specifications herein and that the undersigned is duly licensed to practice architecture in the State of Florida. The undersigned certifies that the drawings and specifications herein were prepared by the undersigned or under the direct supervision and control of the undersigned. The undersigned certifies that the drawings and specifications herein were prepared by the undersigned or under the direct supervision and control of the undersigned. The undersigned certifies that the drawings and specifications herein were prepared by the undersigned or under the direct supervision and control of the undersigned. THE EXPRESSED WRITTEN PERMISSION OF W. ARCHITECT, P.A. IS GIVEN.

W. ANDREW POPE
 LOUISIANA LICENSE 30533

PROJECT
STIX HIBACHI RESTAURANT
 CAMELLIA SQUARE
 SLIDELL, LOUISIANA



ISSUED FOR :

SCHEDULES
 DESIGN DEVELOPMENT
 60% REVIEW
 100% CONTRACT DOCUMENTS
 DEVELOPMENT ORDER
 PERMITS
 BIDDING
 CONSTRUCTION

DATE: _____
 NO. OF PAGES: _____

SHEET TITLE
FLOOR FINISH PLAN

REVISIONS

NO.	DATE	REMARKS
1	MAY 30 2013	

A-3

SHEET NO.