

EQUIPMENT SCHEDULE

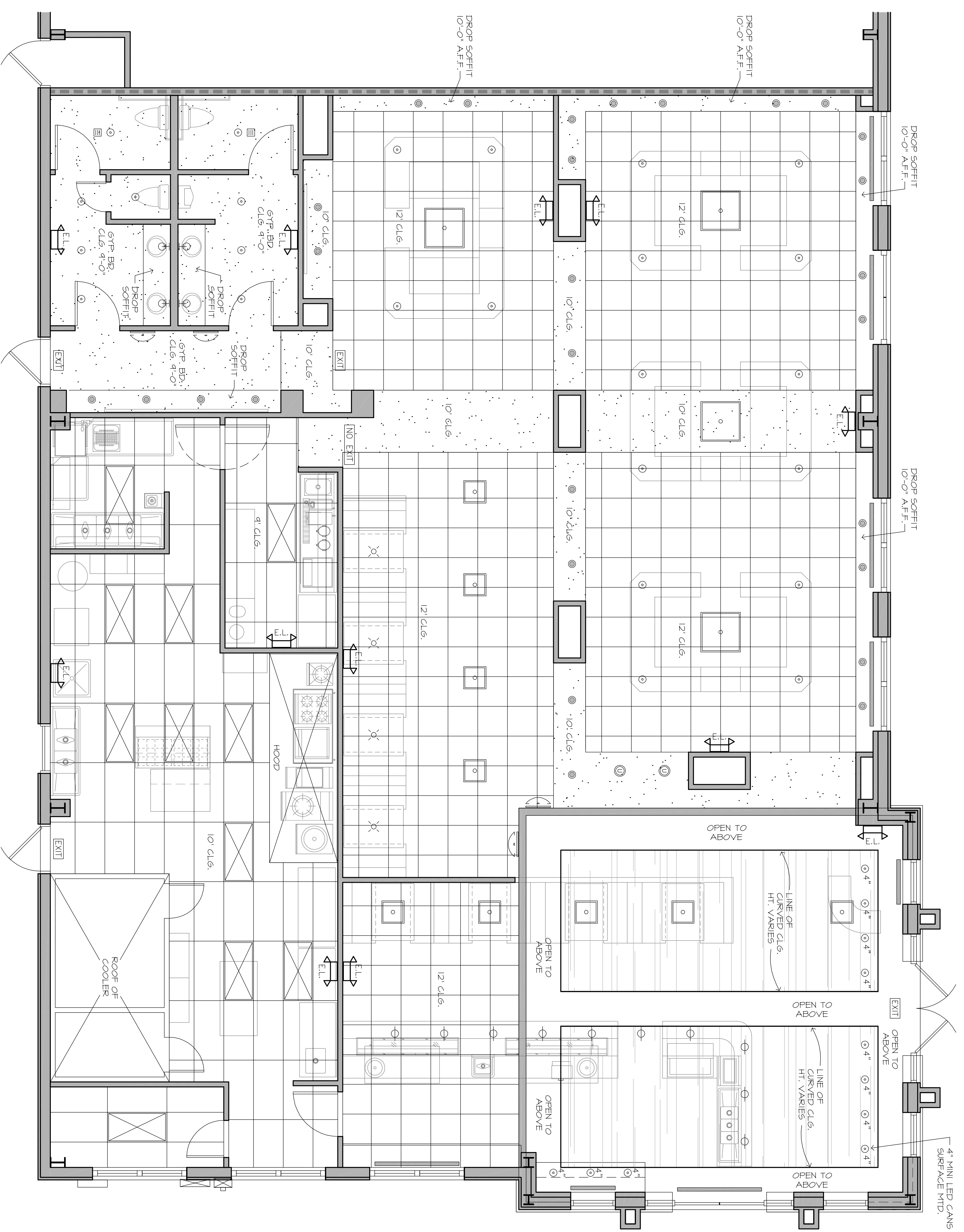
EXISTING	MFR.	MODEL	VOLTS	PH	NOM TONS	CFM	OA CFM	EDG	ENB	AMB	MBH	STRIP HEAT	MOCP
RTU-1	YORK	133CH090A25	208/230	3	7.5	3000	535	80°F	67°F	95°	89.90	--	--
RTU-2	CARRIER	5070D14A2A5	208/230	3	12.5	4500	890	80°F	67°F	95°	146.7	16KW@240V	80 AMP

COOLING @ ARI STAN. COND.

CFM	TSP (IN. WC)	DRIVE TYPE	VOLTS	HZ	PHASE	MOTOR (IND WATER)	DESIGN BASIS	MODEL
EF-1	100	0.25	DIRECT	120	60	1	80.2 W GREENECK	SP-B110
EF-2	4400	0.25	BELT	120	60	1	1-1/2 HP GREENECK	CUBE-180
MAU-1	3176	0.25	BELT	120	60	1	1 HP GREENECK	KSTR-112-H15

} HOOD REVISED TO 12'-0" G.C. TO VERIFY FAN SIZES

MECHANICAL DESIGNER
AIR CONDITIONING ENGINEERS
KETH A. STEWART
CAC 057695



W. ARCHITECT, P.A.

4100 LEGIONARY DRIVE, SUITE 240
 DESTIN, FLORIDA 32541
 850.865.0470
 Member of American Institute of Architects
 DBPR NBR AA 2600-1732

Copyright 2013 **W. Architect, P.A.**
 PROJECT # W. ARCHITECT, P.A. (MAY), 09 NOT REPRODUCED THESE DRAWINGS AND/OR SPECIFICATIONS WITHOUT WRITTEN PERMISSION OF W. ARCHITECT, P.A. THE SERVICE AND SHALL REMAIN THE PROPERTY OF W. ARCHITECT, P.A. ANY REUSE OR REPRODUCTION OF THESE DRAWINGS OR ANY OTHER PRODUCTS FOR ADDITIONS TO THIS PROJECT WITHOUT THE EXPRESS WRITTEN PERMISSION OF W. ARCHITECT, P.A. IS GIVEN.

PROJECT
STIX HIBACHI RESTAURANT
 CAMELLIA SQUARE
 SLIDELL, LOUISIANA
W. ANDREW POPE
 LOUISIANA LICENSE 30533



- ISSUED FOR:**
- SCHEMATICS
 - DESIGN DEVELOPMENT
 - 60% REVIEW
 - 100% CONTRACT DOCUMENTS
 - DEVELOPMENT ORDER
 - PRICING
 - BIDDING
 - PERMIT
 - CONSTRUCTION
- DATE: _____
 NO. OF PAGES: _____

SHEET TITLE
MECHANICAL PLAN

DATE: **MAY 30 2013**

REVISIONS

DATE	REMARKS

M-1

SHEET NO.

MECHANICAL PLAN
 SCALE: 1/4"=1'-0"