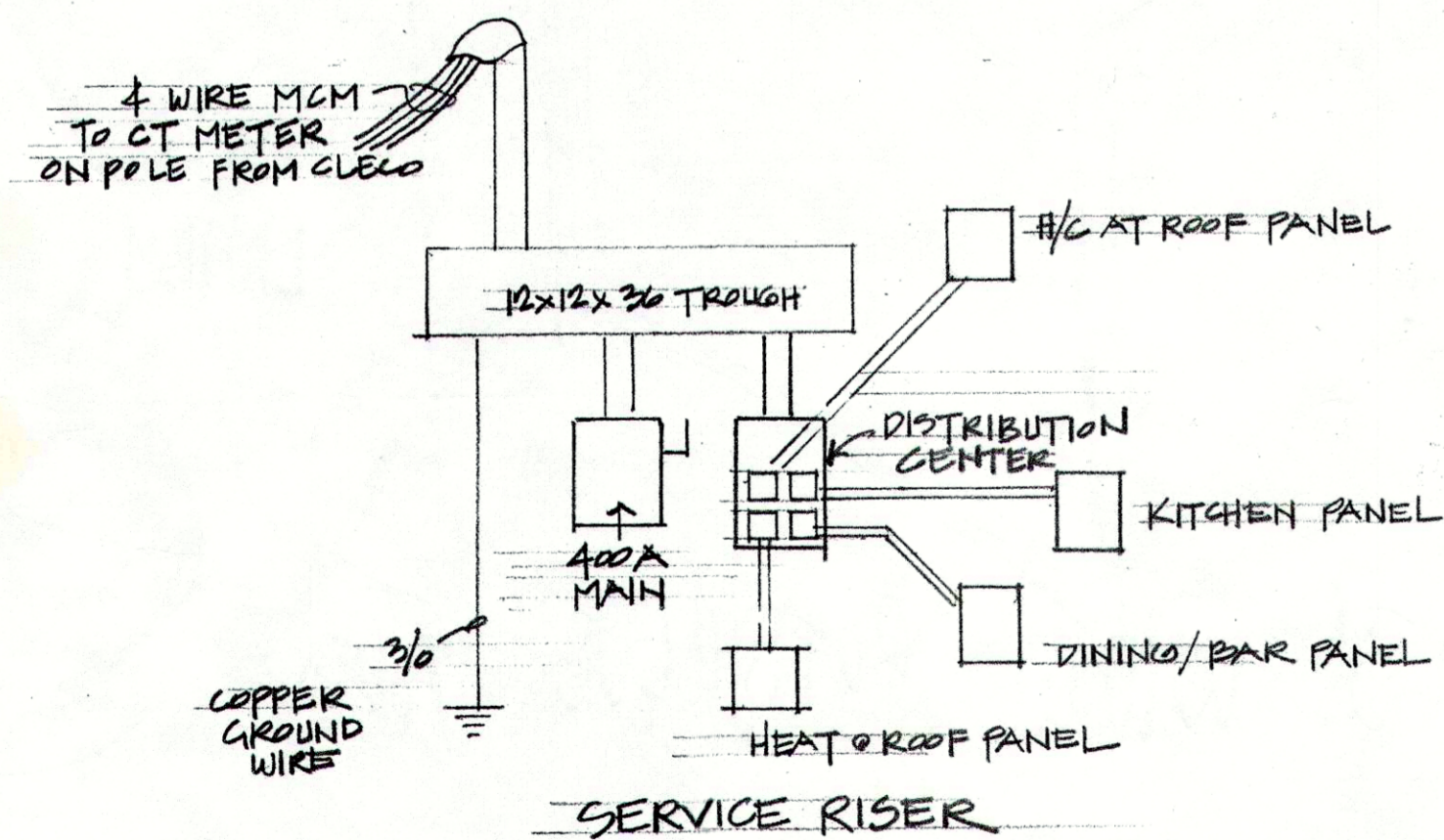
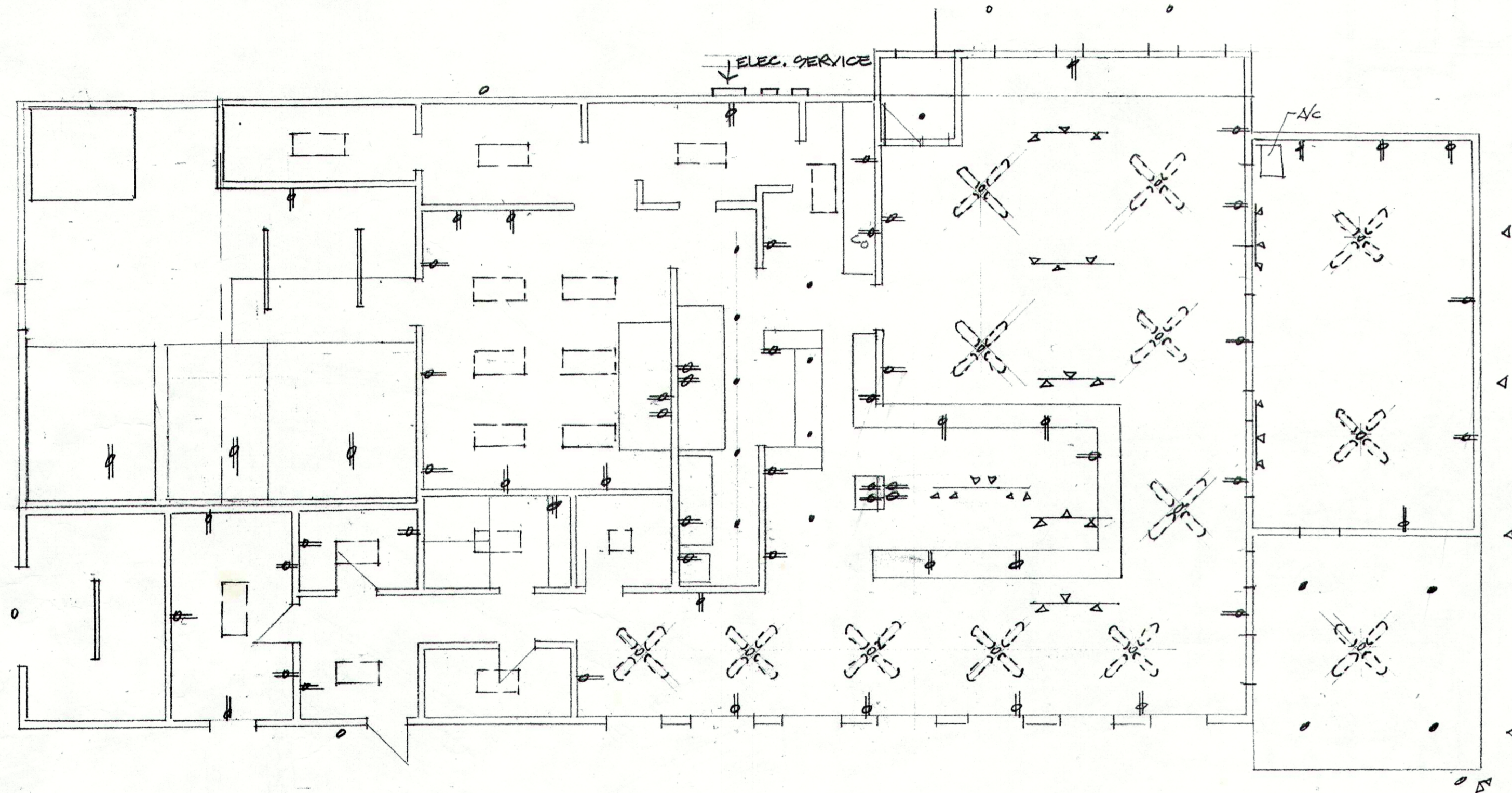


Handwritten red notes on the left margin, possibly indicating a revision or section reference.

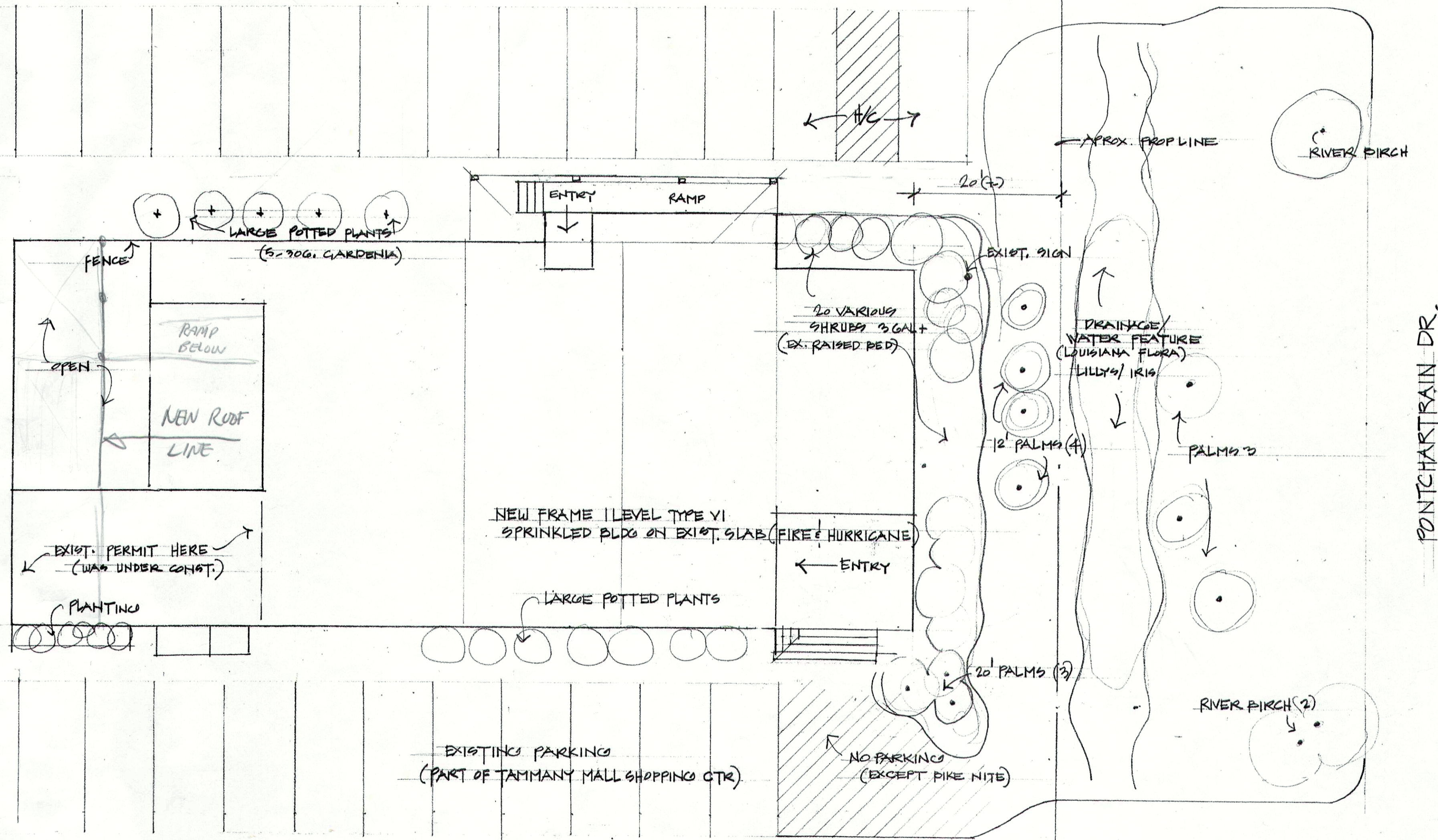


ELECTRICAL 1/2" = 1'-0"

ALL SWITCHING TO BE FIELD DETERMINED BY OWNER & ELECTRICIAN

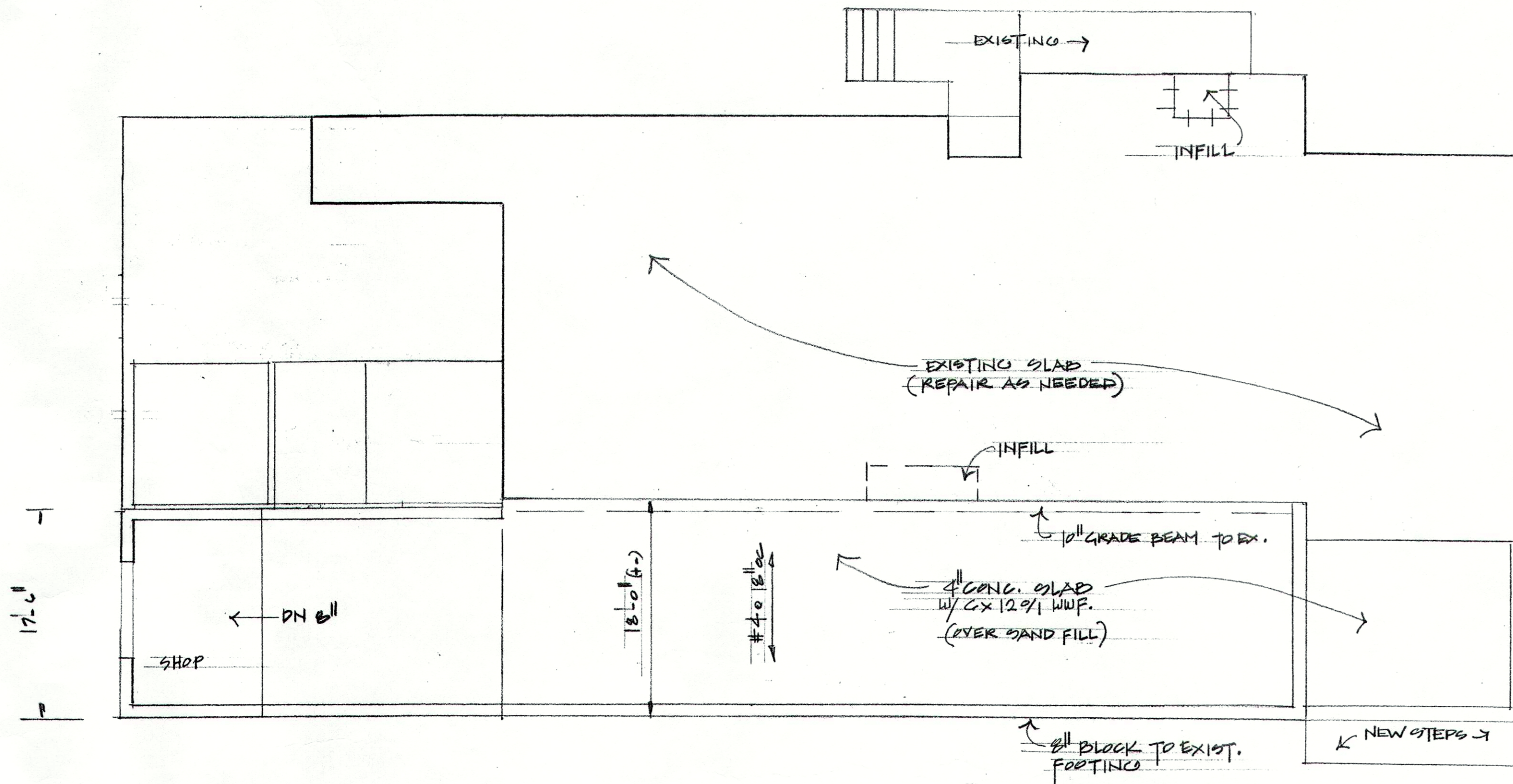
SOUTHSIDE CAFE		
SCALE:	APPROVED BY:	DRAWN BY:
DATE:		REVISED:
		DRAWING NUMBER:

Handwritten black text '01-14' in the bottom left corner.

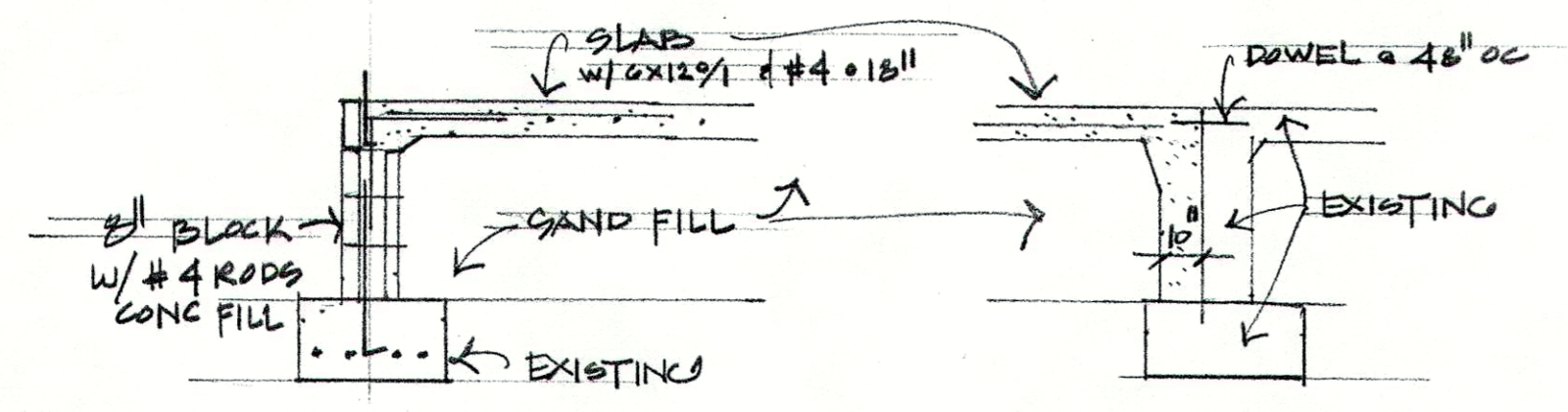


SITE PLAN • 11.10

SOUTHSIDE CAFE		
3154 PONTCHARTRAIN DR. SLIDELL		
SCALE: NW 05	APPROVED BY:	DRAWN BY:
DATE:		REVISED:
ROBERT SOLLBERGER • ARCHITECT		
150 CHAMALE DR. SLIDELL 70460		
SITE		DRAWING NUMBER



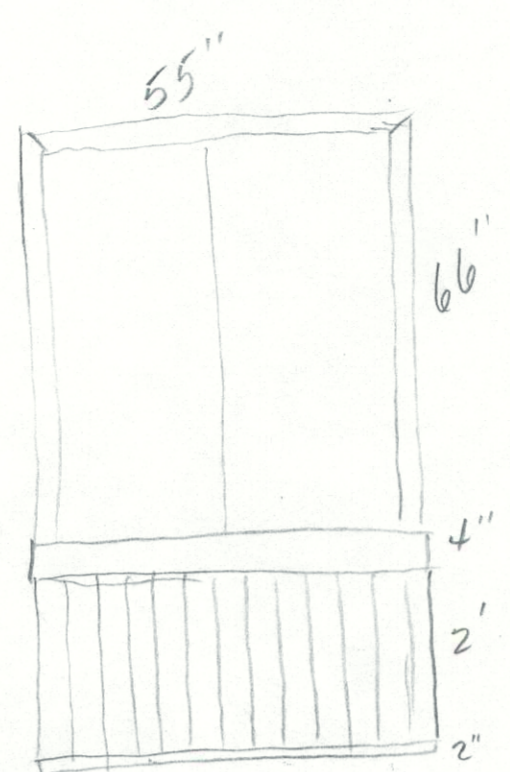
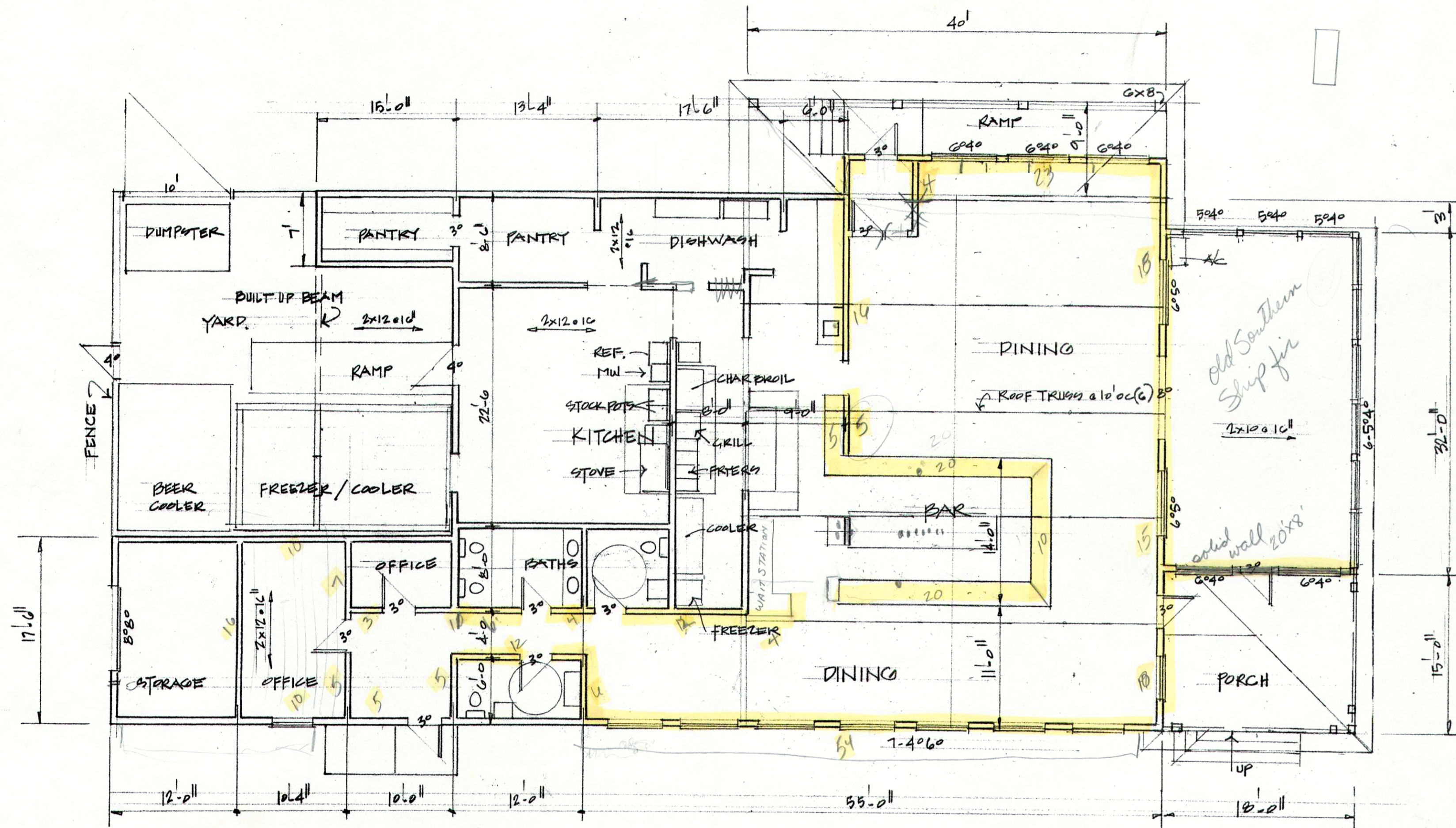
FOUNDATION 1/8"



EXTERIOR 3/8" INTERIOR 3/8"



SOUTHSIDE CAFE		3154 PONTCHARTRAIN DR		SLIDELL	
SCALE:	APPROVED BY:	DRAWN BY:		REVISED:	
DATE:					
SOLLBERGER - ARCHITECT					
					DRAWING NUMBER



deck to be from
Old Southern Shipyard

179 linear ft. 2' length
4" chair rail
2" trim

Bar 55 linear ft. 2" wide

deck for 76 linear ft. wainscote
20x8 wall
31x8" between windows
32x2" over windows

2 columns 8'6"

FLOOR PLAN 1/8" = 1'-0"

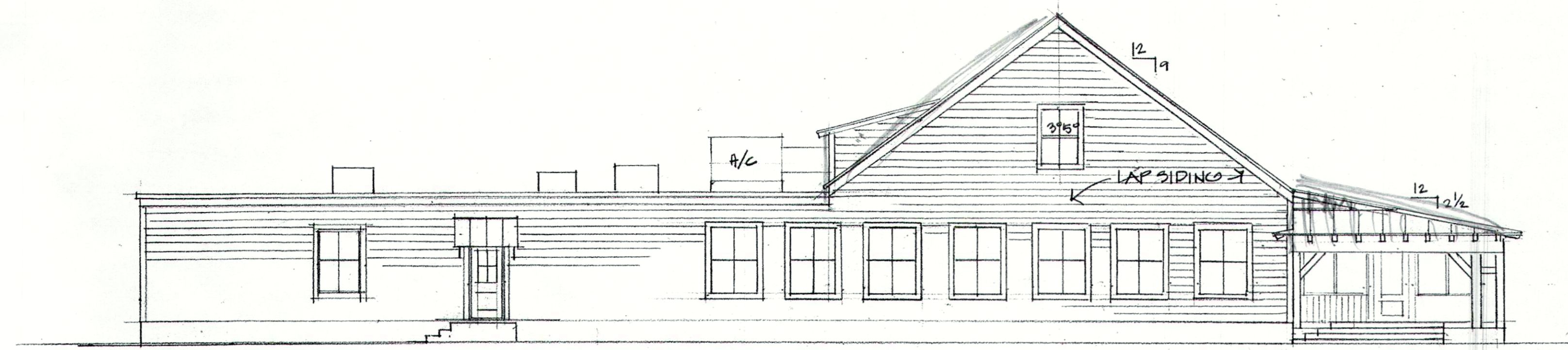
4743 HTD: COOL / 5538 TOTAL BLDG.
CONTRACTORS TO VERIFY EXISTING SLAB PENETRATION TO ESTABLISH NEW WALL LOCATIONS DUE TO FIRE.



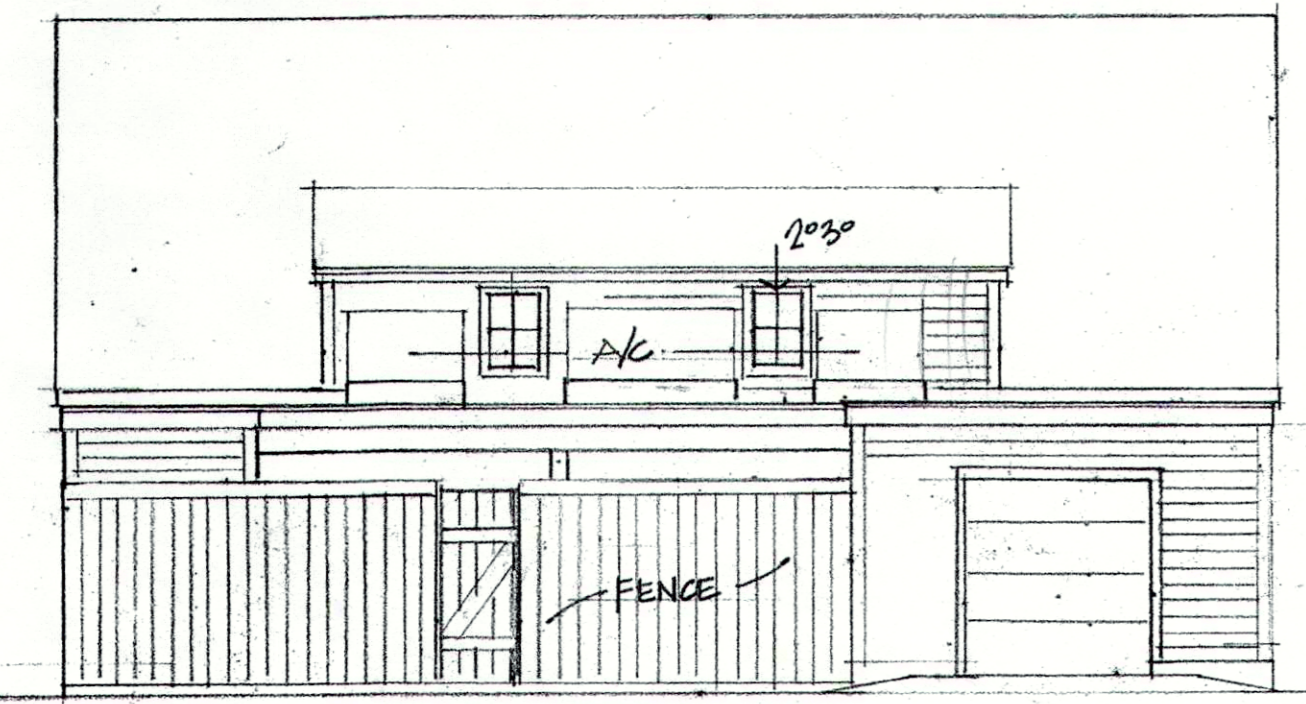
SOUTHSIDE CAFE		PONTCHARTRAIN DR. SLIDELL	
SCALE: 1/8"	APPROVED BY:	DRAWN BY:	
DATE: Nov 05		REVISED:	
ROBERT SOLLBERGER ARCHITECT			
150 CHAMALE DRIVE SLIDELL			
FLOOR PLAN		DRAWING NUMBER	

2 NOV 05

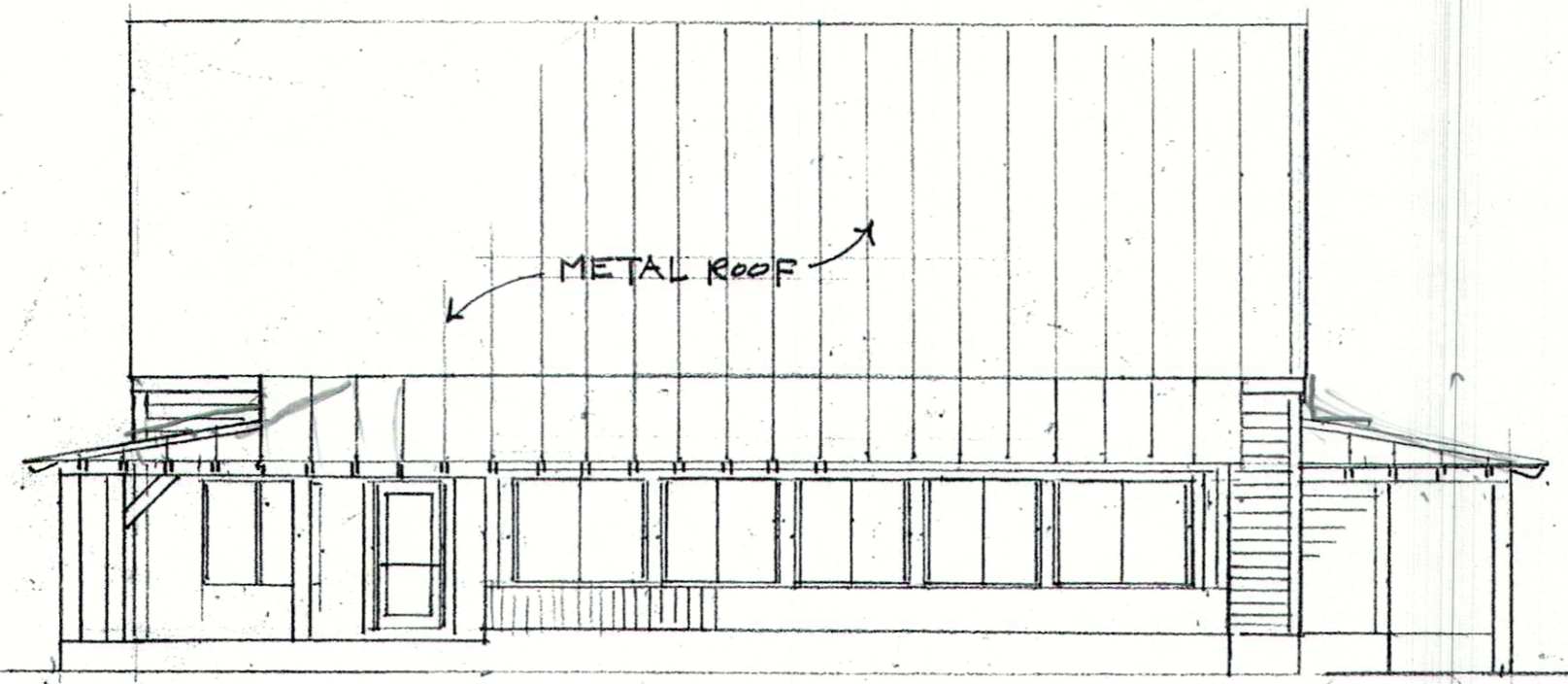
NOV 2/2005
M.W. 2/2005



LEFT SIDE 1/8"

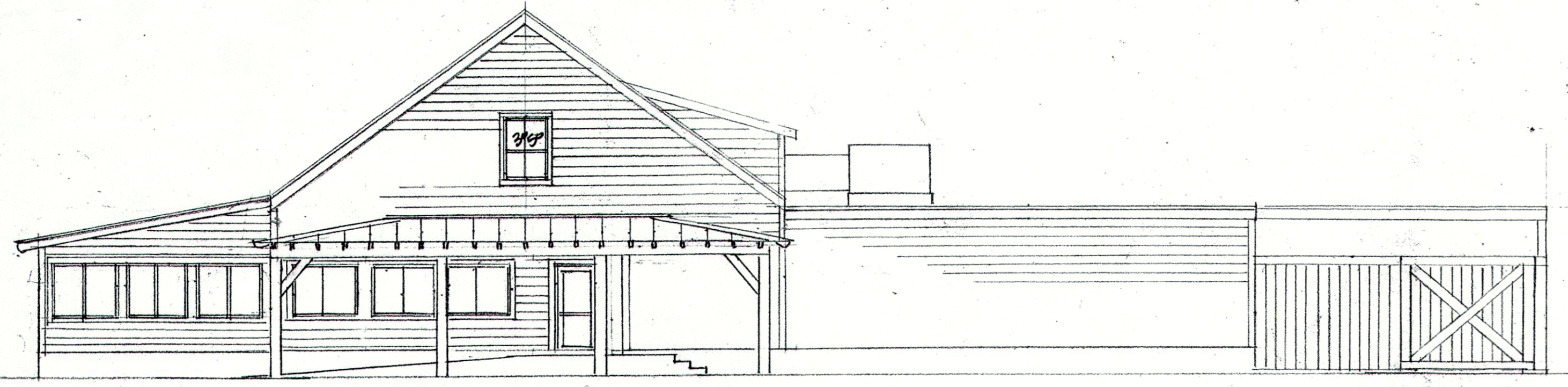


REAR 1/8"



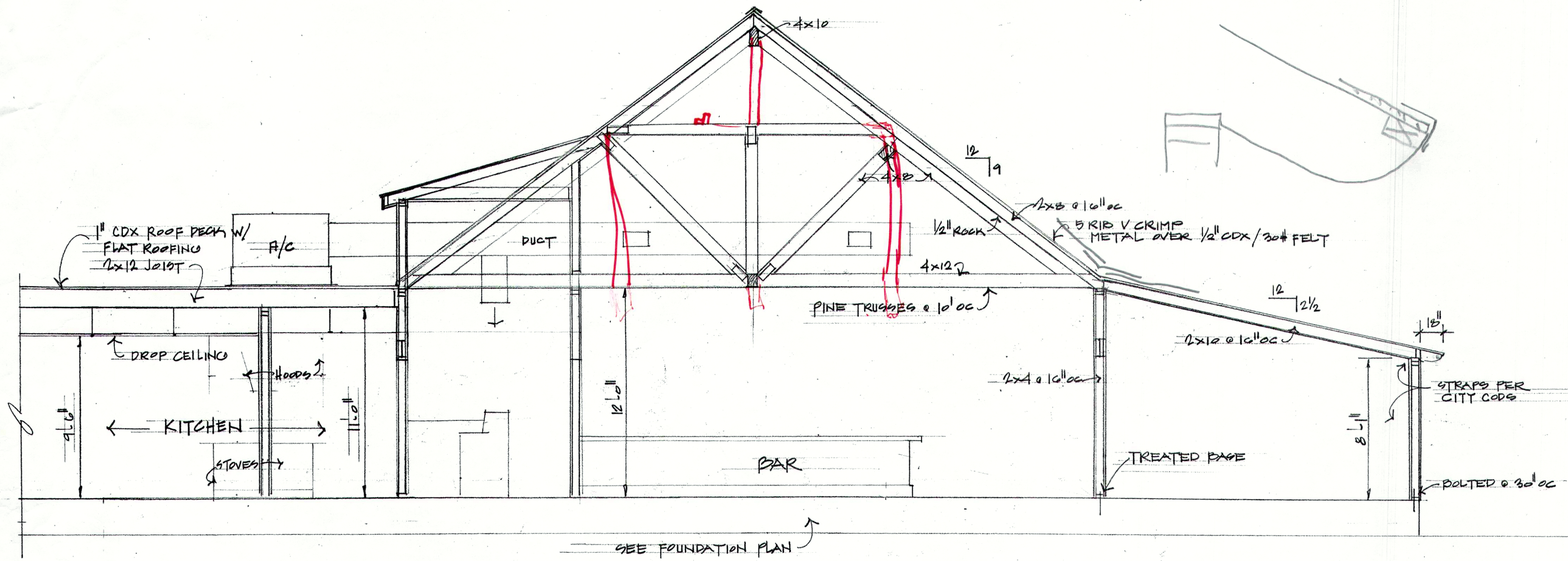
FRONT 1/8"

L 6 pcs.



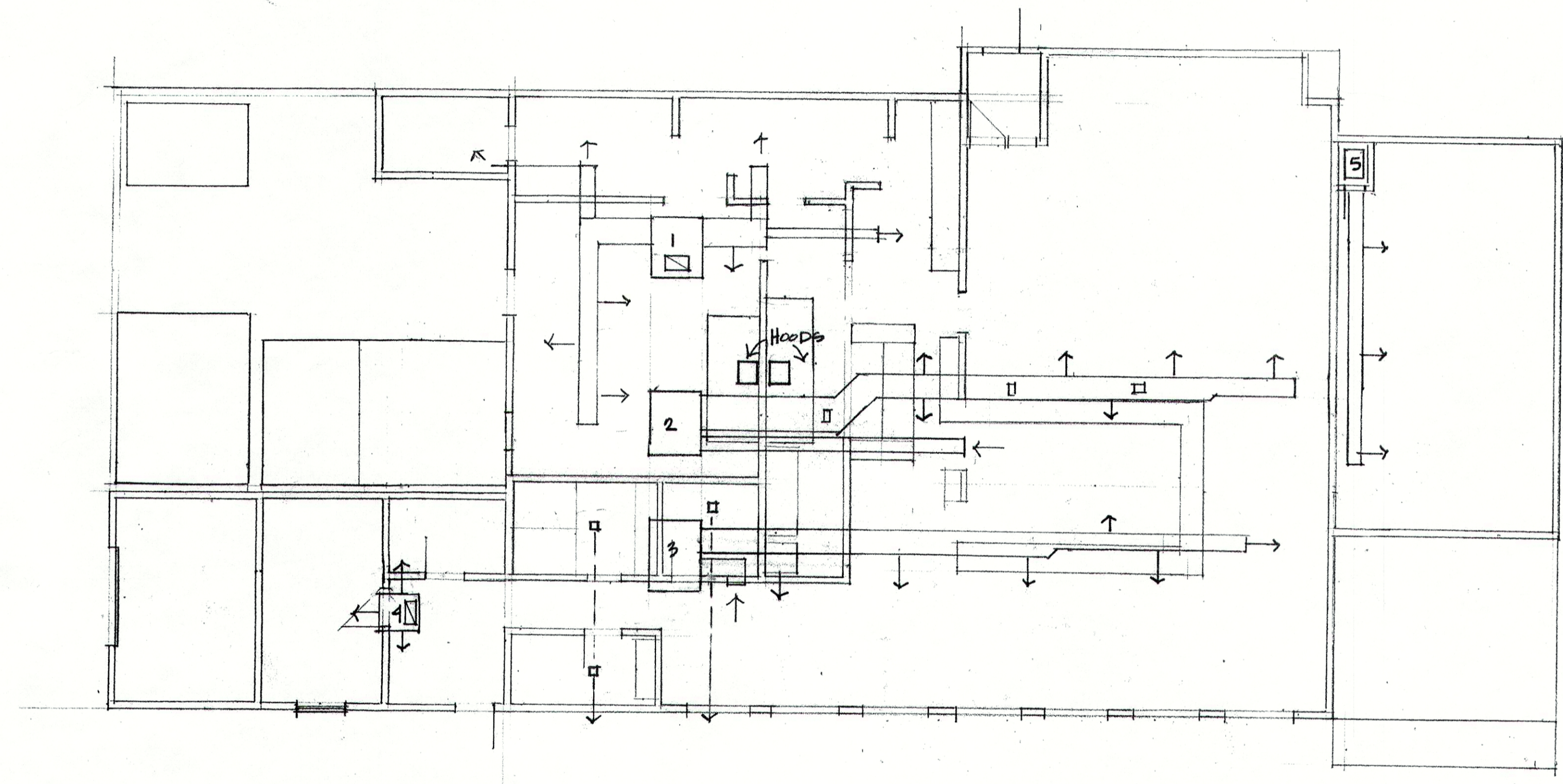
RIGHT SIDE 1/8"

SOUTHSIDE CAFE		
SCALE:	APPROVED BY:	DRAWN BY:
DATE:		REVISED:
		DRAWING NUMBER:



SECTION 1/4" = 1'-0"

SOUTHSIDE CAFE		
SCALE:	APPROVED BY:	DRAWN BY:
DATE:		REVISED:
		DRAWING NUMBER



HVAC PLAN 1/8" = 1'-0"

UNIT 1	10 TON	DOWNDRAFT	GAS HT.
" 2	15 "	SIDE DRAFT	"
" 3	10 "	"	"
" 4	2 "	DOWNDRAFT	"
" 5	5 "	SPLIT UNIT	HEAT PUMP ELEC

SOUTHSIDE CAFE		
SCALE:	APPROVED BY:	DRAWN BY:
DATE:		REVISED:
		DRAWING NUMBER

