

STATE OF LOUISIANA
Department of Public Safety and Corrections
Office of State Fire Marshal Code Enforcement and Building Safety
8181 Independence Boulevard
Baton Rouge, Louisiana 70806
225-925-4920

HENRY H. FRY
DEPUTY ASSISTANT SECRETARY

NEW CONSTRUCTION

ROBERT SOLLBERGER
ROBERT SOLLBERGER, ARCHITECT
150 CHAMALE DR
SLIDELL, LA 70460-0000

RE: P0300916
SOUTHSIDE CAFE
3154 PONCHARTRAIN DR
SLIDELL, LA 70458-0000

NFPA 101, 2003

ASSEMBLY 300 OCCUPANTS OR LESS

Dear Applicant:

This is to advise that we have reviewed the drawings and specifications for the subject proposed construction and have determined that they appear to satisfactorily comply with the adopted laws, codes, rules and regulations of The State Fire Marshal subject to the following requirements:

1. **LRS 40:1728 The State Uniform Construction Code is enforced as promulgated by local political subdivisions of the state. Contact the local building official of the applicable local political subdivision to coordinate compliance with State Uniform Construction Code requirements.**

NOTE: THE COMMENTS LISTED BELOW IDENTIFY APPARENT DEFICIENCIES DETECTED IN OUR REVIEW OF THE DOCUMENTS SUBMITTED.

2. **101:7.2.1.3 Provide landings outside exterior doors level with the interior finish floor.**
3. **101:7.2.2.4.1 Stairs and ramps shall have handrails on both sides and shall be provided within 30 inches of all portions of the required egress width of stair.**
4. **LRS 40:1651 Submit chemical fire suppression system shop drawings with plan review application and fee prior to installation of any work of this section. Such work shall not commence until shop drawings have been found to be in compliance with applicable codes by this office. Submittal shall include a copy of this letter and shall be in accordance with the rules for such by this office. (Systems include hoods, halon, wet or dry chemical systems, etc.)**
5. **NOTE: HOOD CONSTRUCTION IS NOT AUTHORIZED until a satisfactory review by this office is performed for determining compliance with minimum code requirements. Compliance with NFPA 96, regarding cooking hood construction/installation, cannot be determined with the documents received. (A copy of the "Kitchen Exhaust Hood/Duct/Suppression System Requirements" is enclosed for your use). The following specific information was not apparently provided:**

Nov 8, 2005
P0300916 - PAGE 1

- a. Hood and duct sizes, metal type and gauge (thickness).
 - b. The type of construction at the walls, attic and roof adjacent to the hood and duct.
 - c. The clearance between the hood and surrounding walls and ceiling.
 - d. The clearance between the exhaust duct and surrounding structure at the ceiling, the attic, and the roof.
 - e. The clearances at the exhaust fan assembly.
 - f. Exhaust fan and make-up air fan (CFM) capacities and duct sizes.
6. 101:12.3.2 Separate STORAGE from other parts of the building by 1 hour fire resistive construction with self-closing 45 minute labeled door/frame assembly or provide automatic sprinkler protection in accordance with Section 9.7 and smoke partitions with self-closing doors in accordance with 8.7.1.2 and 8.4. (Sprinkler piping for isolated hazardous areas connected to domestic water supply shall comply with 101:9.7.1.2).
 7. 101:12.2.9 Provide emergency lighting according to NFPA 101:7.9.
 8. 101:12.2.10 Exit signs complying with NFPA 101:7.10 shall define exits and access to exits where the exit is not immediately apparent.
 9. LRS 40:1730.45 and LAC 55:V:2601 The documentation provided for the subject facility does not appear to comply with The Commercial Building Energy Conservation Code.

NOTE: THE FOLLOWING COMMENTS IDENTIFY ISSUES FOR INFORMATIONAL AND CAUTIONARY PURPOSES OR ISSUES THAT COULD NOT BE VERIFIED IN THE SUBMITTED DOCUMENTS.

10. 101:7.2.1.3.1 and 7.1.6.3 The floor elevation shall not change by more than 1/2" from one side of a door to the other.
11. LRS 40:1731-(Effective 8/15/95) Provide handicapped accessibility in accordance with ADA-AG (Accessibility Guidelines - September 1994). This does not include a review for compliance with the Federal Americans with Disabilities (Civil Rights) Act of 1990. Compliance with state regulations and requirements does not guarantee compliance with federal law.
12. LAC 55:V:305 Insulation and insulation assemblies shall meet the requirements of Section 718, International Building Code, 2000 Edition.
13. LRS 40:1711 Provide safety glazing in hazardous locations.
14. 101:7.1.7.2.2 Steps in a change in elevation, where the elevation difference is 21" or less, shall have minimum 13" treads that are readily apparent.
15. 101:7.2.1.5.9 Doors shall be openable with ONLY one releasing operation. A two-step release, such as a knob and an independent slide bolt, is NOT acceptable.
16. 101:7.2.1.5 Locks on doors in means of egress shall not require the use of a key, special device or special knowledge to open in the direction of egress.
17. 101:7.2.2.4.4.1 Handrails shall be no lower than 34" nor higher than 38" above the leading edge of the tread surface.

18. 101:7.2.2.4.4.10 Where a stair handrail is not continuous between landings, it shall continue to slope for a depth of one tread beyond the bottom riser and shall extend 12" level with the landing at the top riser. In addition, if a handrail is to provide for handicapped accessibility, an additional 12" extension is required at the bottom level with the landing in accordance with ADAAG:4.9.4(2).
19. 101:7.2.2.4.4.7 and 7.2.2.4.4.6(1) Handrails shall be continuously graspable along the entire length. Handrails shall be from 1-1/4" to 2" in diameter.
20. 101:7.2.2.4.4.5 Provide a minimum clearance of 2-1/4" between the handrails and the walls or guards to which they are attached.
21. 101:12.2.2.2 Doors in a required means of egress serving Dining Areas may be provided with a latch or lock only if it is panic hardware.
22. Shop drawings for fire protection systems, such as Fire Alarm, Sprinklers, and Suppression Systems, that are required to be submitted to this office for review, shall be routed through the "Professional of Record's" (Architect / Engineer) office, and shall be stamped with his "Shop Drawing Review Stamp" or equivalent, indicating that shop drawings have been reviewed by him for conformance with plans, specifications, and appropriate codes.
23. LRS 40:1653 and 40:1628 All work and inspections of fire alarm, fire suppression, automatic sprinkler and fire extinguishing systems or portable fire extinguishers shall be performed by a State of Louisiana certified agent.
24. Inadequate electrical systems have been found to be a major cause of fires throughout the state. The "Professional of Record" (Architect/Engineer) if required by LRS 37:155, otherwise, the Owner shall comply with the 2002 NFPA 70, National Electrical Code, for all proposed electrical work in this submittal. Electrical work/modifications may include, but not limited to the following: lighting fixtures (interior, exterior and site); receptacles; panelboards; panel schedules; load schedules; utility company or service transformer KVA size, number of phases, voltage and secondary short circuit amps; fixture schedules; wire type, size and circuiting; single line diagram; properly sized new and existing protective equipment, including service disconnect(s), panelboard(s), circuit breakers and fused switches, sized for available short circuit amps; properly sized system grounding conductor and grounding electrode(s); connection of the system grounding and bonding at the service disconnect enclosure(s); properly sized overload or overcurrent and short circuit protective devices for conductors, motors, transformers and equipment; properly sized conductors for equipment grounding and bonding of all metallic conduit and enclosures; installation of ground fault circuit receptacles; etc.
25. HVAC system shall be constructed in accordance with 101:9.2.
26. 101:9.2.1 Install smoke detectors to automatically stop the fan in HVAC duct systems over 2000 cfm in accordance with NFPA 90A:6.4.2(1). Where fire alarm system is required, duct detectors shall be connected to building alarm system.
27. 90A:6.4.4.3 Where smoke detectors required by Section 6.4 are installed in a building NOT equipped with an approved protective signaling system as specified by 6.4.4.2:
 - a. The smoke detector activation required by Section 6.4 shall cause a visual AND an audible signal in a normally occupied area, and

b. Smoke detector trouble conditions shall be indicated visually OR audibly in a normally occupied area and shall be identified as air duct detector trouble.

Provide a remote alarm indicator/annunciator in accordance with 72:6.10.2 for these conditions.

- 28. 101:9.1.1 Install gas piping in accordance with NFPA 54.**
- 29. 101:9.2.2 Gas-fired equipment (furnaces, space heaters, water heaters, etc.) shall be U.L. listed for its intended use and shall be installed and vented in accordance with NFPA 54.**
- 30. 101:9.2.1, 90A:4.3.9.2 and 90A:6.4.2 Smoke detectors and smoke dampers shall be installed in systems over 15,000 cfm. To isolate air handling equipment, dampers shall automatically close when system is not in operation as per NFPA 90A:6.3.3. Interconnect to buildings smoke detection and alarm systems when alarm system is required by NFPA 101.**
- 31. 101:12.7.8.3 Occupant capacities will be set and posted by the inspecting officer upon final inspection.**
- 32. NOTE: Please enclose a copy of this letter with future submittals or other correspondence pertaining to this project.**

Changes to construction in the field which are not consistent with the reviewed documents are not authorized unless reviewed by this office for compliance with Code. Modifications to reviewed plans must be submitted to this office by the Architect/Civil Engineer for review prior to final inspection. If an Architect or Civil Engineer is not required by RS 37:155, revisions shall be submitted by the Owner. Submittals shall include plans, completed application, a minimum \$55.00 review fee, and a copy of the most current plan review letter.

Compliance with code requirements for fire protection systems, such as Fire Alarm, Sprinkler and Suppression Systems, is determined by separate shop drawing submittal and is not included in this review.

This review shall in no way permit and/or authorize any omissions or deviations from the specific requirements of the adopted codes, rules and regulations in accordance with R.S. 40:1574.1(B).

This review is valid for 180 days from the date of this letter. Construction permits must be issued and/or construction must commence within this time period.

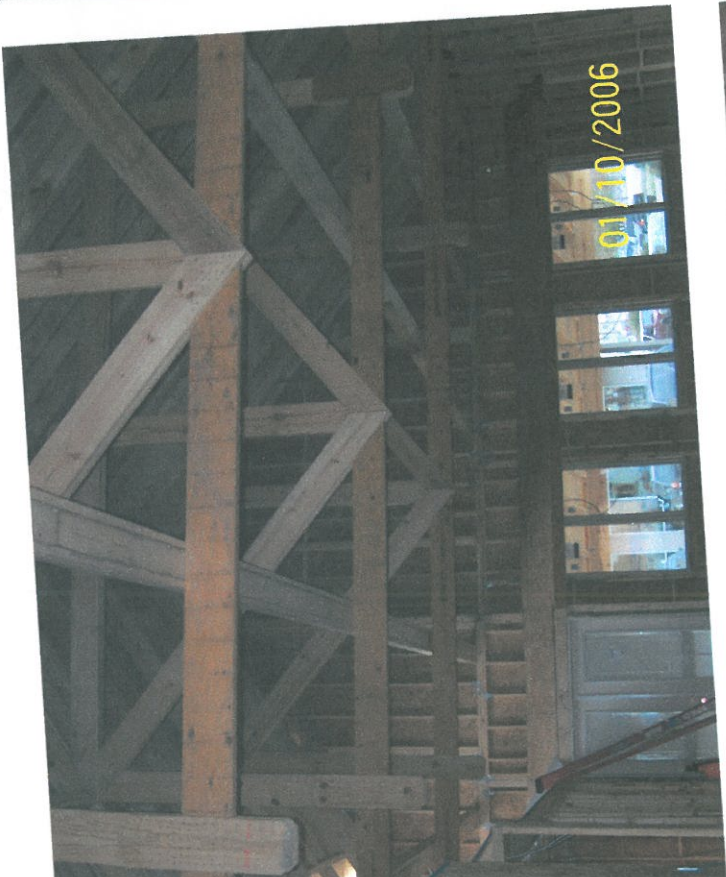
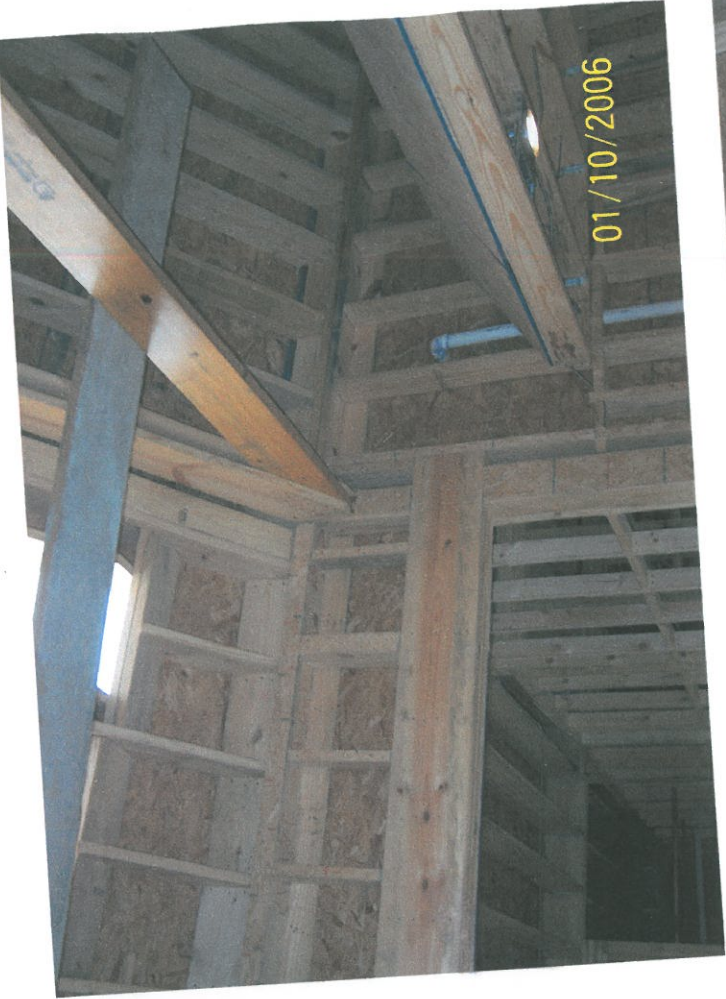
This office requires certification of the completed project in accordance with the approved documents (certificate enclosed).

Occupancy of the project will not be permitted until we receive the completed certificate and a satisfactory inspection of the completed construction has been made by this office.

To arrange for inspection of the project, please contact the District Office at the phone number below two (2) to three (3) weeks in advance. The plans stamped reviewed by this office must be available on job site at time of inspection. Certificate of completion must be provided to the inspecting Deputy for final inspection.

REVIEWED BY:
OTIS RAMKE
ARCHITECT

CC:
Dan De Blanc
Slidell Fire Prevention*
City Of Slidell*
New Orleans District* 5045685500



01/10/2006

