

DAMMON ENGINEERING, INC

CHIEF ENGINEER
EMMETT DAMMON, P. E.

CHIEF ARCHITECT
ROBERT WILTSE

1095 FLORIDA AVENUE
SLIDELL, LA, 70458
OFFICE: 985-649-5632
FAX: 985-641-5950

WEBSITE: WWW.DAMMONENGINEERING.COM
EMAIL: DAMMONENG@BELLSOUTH.NET

ARCHITECTURE
ENGINEERING
STUDIES
PLANNING
INVESTIGATION
EXPERT WITNESS

ADDITION OF NEW CLASSROOMS

RAINBOW CENTER
KINGSPPOINT
121 KINGSPPOINT BLVD
SLIDELL, LA

SITE PLAN

REV:

SCALE: AS NOTED

JOB#: 1998

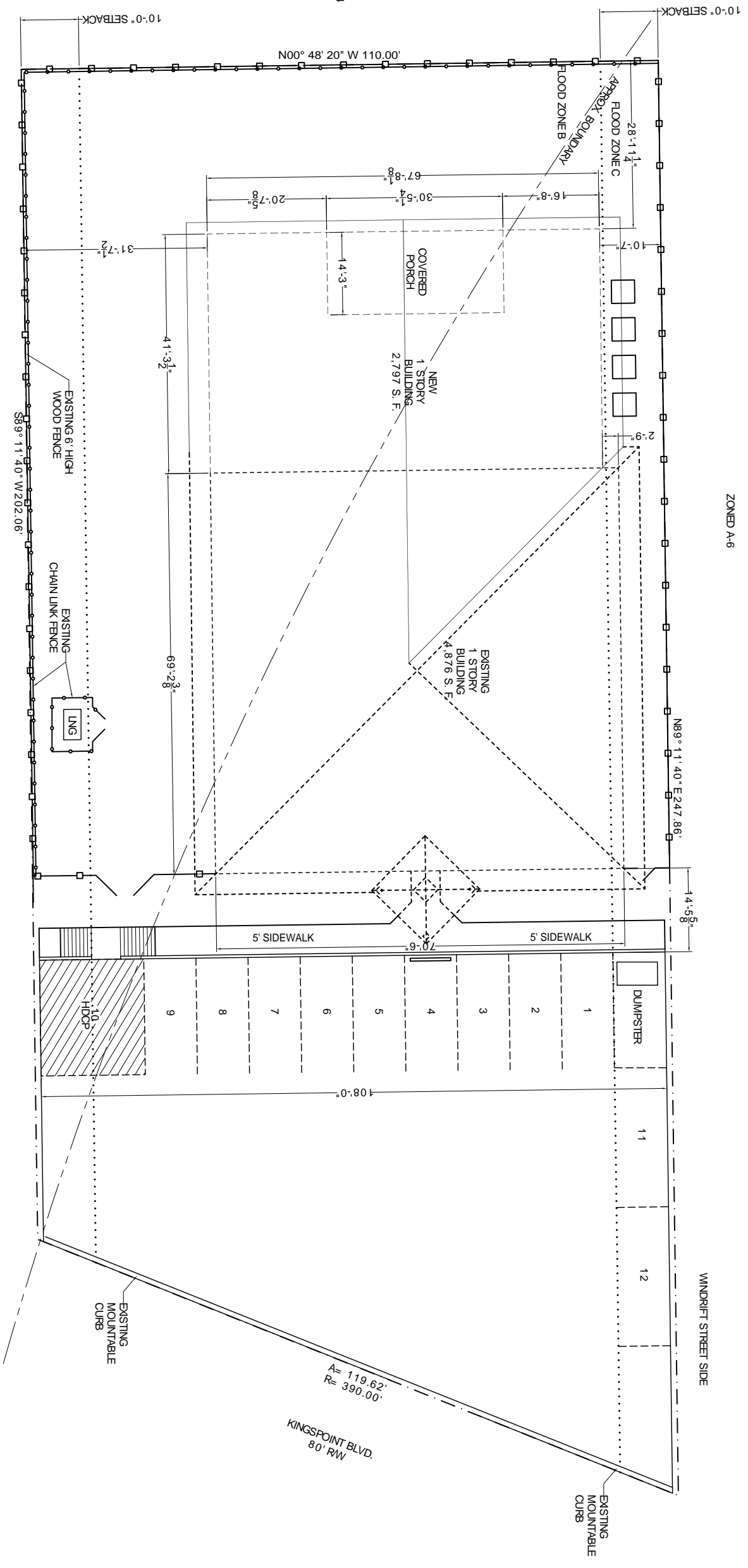
DATE: 08-28-08

SHEET

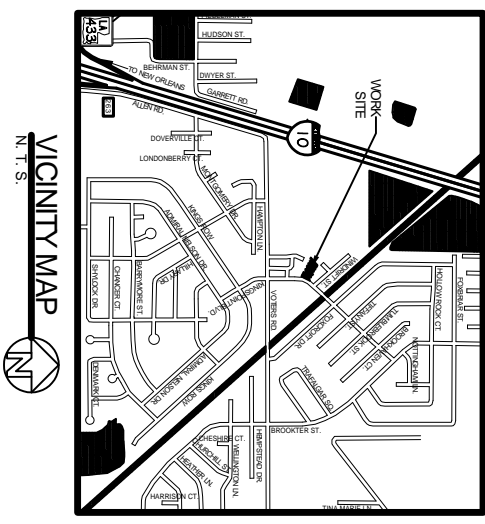
C-1

OF

DAY CARE CENTER PARKING REQUIREMENTS	
EXISTING BUILDING=	4,876 S. F.
NEW BUILDING =	2,797 S. F.
TOTAL=	7,673 S. F.
PARKING- MINIMUM 5 SPACES PLUS 2 SPACES FOR EVERY 3 EMPLOYEES. 12 PARKING SPACES PROVIDED, PLUS ONE HANDICAP ACCESSIBLE SPACE	



SITE PLAN
SCALE: 1" = 10'-0"



LEGEND

- - - - - EXISTING PARKING
- ===== EXISTING CURB