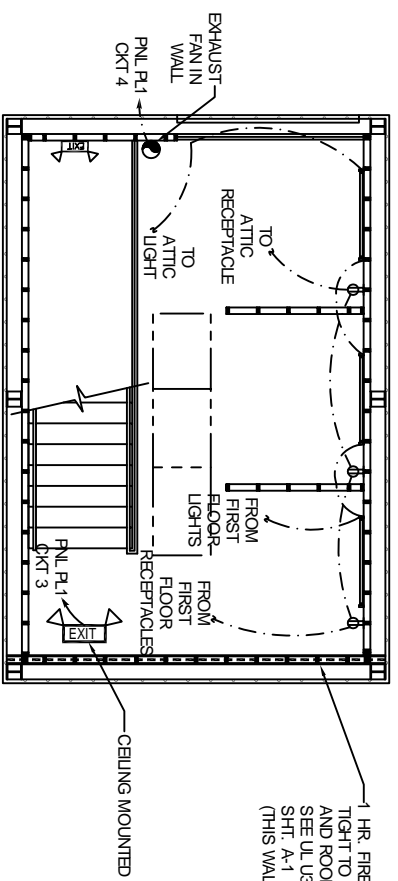


FIRST FLOOR POWER & LIGHTING PLAN

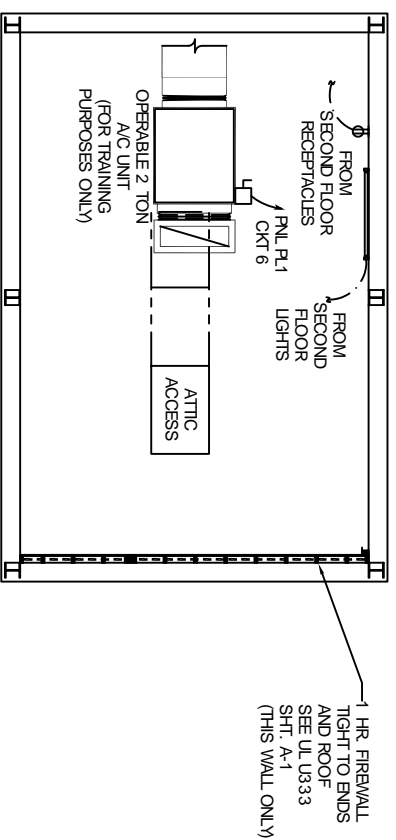
SCALE 1/4" = 1'-0"



SECOND FLOOR POWER & LIGHTING PLAN

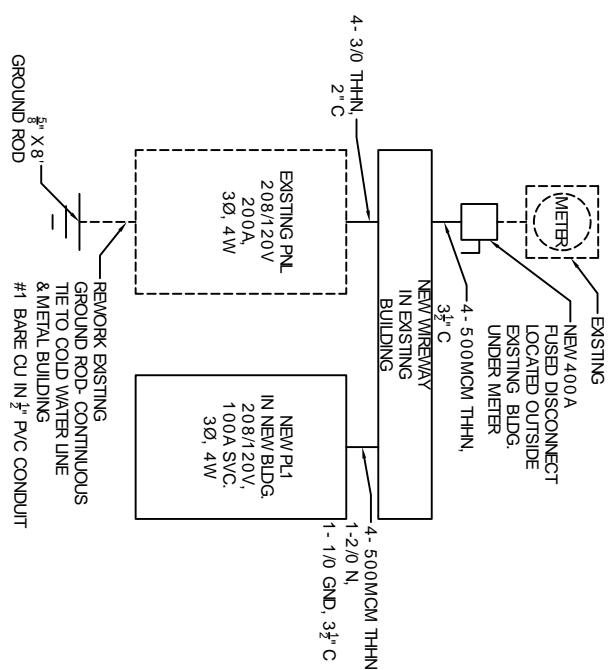
SCALE 1/4" = 1'-0"

PANEL R1		LOCATION: WEST WALL		FEEDER SOURCE CIRCUIT		VOLTAGE: 208/120V, 100A 1Ø, 3W		ENCLOSURE: SURFACE MOUNTED EQUIPMENT GND BAR		SQUARE D TYPE OO LOAD CENTER OR EQUAL	
OKT NO.	THIN WIRE	LOAD DESCRIPTION	BREKER	AMP	POLE	LOAD (VA)	BREKER	AMP	POLE	LOAD (VA)	GROUND WIRE (Ø)
1	2 #12	RECEPTACLES	20	1	800	1	20	FLUORESCENT LIGHTS	2	2 #12	2
3	2 #12	EXTERIOR WALL SCONCE LIGHT- ENT LIGHTS	20	1	300	1	20	EXHAUST FAN	4	2 #12	4
5	2 #12	RECEPTACLES	20	1	200						
7	2 #10	AC COMPRESSOR	30	2	12012	2	30	AC HEAT 7 KW	6	2 #10	6
9	2 #10	AC COMPRESSOR	30	2	12012	1	20	WEATHERPROOF GR RECEPTACE	8	2 #12	8
11	SPARE		20	1				SPARE	10	2 #12	10
TOTAL CONNECTED LOAD (VA)						806-6486			GROUND BUS		
AGE-115016								806-6486			



ATTIC POWER & LIGHTING PLAN

SCALE 1/4" = 1'-0"



ELECTRICAL ONE LINE DIAGRAM

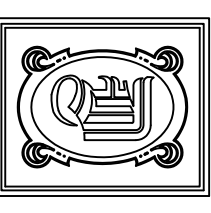
N.T.S.

ELECTRICAL NOTES

- ALL WORK SHALL CONFORM TO THE LATEST EDITION OF THE NATIONAL ELECTRICAL CODE, THE GOVERNING ELECTRICAL CODE AND ALL OTHER INSPECTION DEPARTMENTS HAVING JURISDICTION. OBTAIN CERTIFICATES OR APPROVAL WHERE REQUIRED.
- ALL MATERIALS FURNISHED SHALL BE NEW AND SHALL BE UL LISTED.
- THE DRAWINGS INDICATE SIZE AND GENERAL LOCATION OF WORK. SCALE DIMENSIONS SHALL NOT BE USED. THE EXACT LOCATION AND LOCATIONS OF ALL LIGHTING FIXTURES, RECEPTACLES AND TELEPHONE OUTLETS, ETC. SHALL BE DETERMINED BY ACTUAL CONDITIONS IN THE FIELD.
- PRIOR TO BIDDING, CONTRACTOR SHALL VISIT THE JOB SITE AND FAMILIARIZE THEMSELVES WITH THE EXISTING CONDITIONS.
- ELECTRICAL CONTRACTOR SHALL COORDINATE HIS WORK WITH OTHER TRADES AND WITH OTHER CONTRACTORS WHOSE WORK MAY AFFECT THIS INSTALLATION.
- ELECTRICAL CONTRACTOR SHALL COORDINATE INCOMING ELECTRICAL SERVICE WITH UTILITY COMPANY AND INCLUDE IN HIS BID ALL CHARGES AND FEES INCURRED IN MODIFICATIONS.
- WHERE MORE THAN ONE SWITCH OCCURS IN THE SAME LOCATION, THEY SHALL BE INSTALLED IN A GANG THE BOX UNDER ONE COVER PLATE.
- ELECTRICAL CONTRACTOR SHALL COORDINATE THE TELEPHONE INSTALLATION WITH THE TELEPHONE COMPANY AND THE GENERAL CONTRACTOR.
- ELECTRICAL CONTRACTOR, BEFORE INSTALLING ANY OF THE WORK, SHALL SEE THAT IT DOES NOT INTERFERE WITH CLEARANCES REQUIRED FOR FINISHED COLUMNS, HUNG CEILINGS, PARTITIONS, WALLS, ETC. AS SHOWN IN THE ARCHITECTURAL DRAWINGS AND DETAILS. IF ANY WORK IS INSTALLED AND IT LATER DEVELOPS THAT SUCH DETAILS OR DESIGN CANNOT BE FOLLOWED, THE CONTRACTOR, AT HIS OWN EXPENSE, SHALL MAKE SUCH CHANGES IN THE WORK AS DIRECTED BY THE ARCHITECT.
- PERFORM TESTS REQUIRED BY THE OWNER OR THE ENGINEER IN CONNECTION WITH THE OPERATION OF THE ELECTRICAL SYSTEM IN THE BUILDING.
- ALL TESTS SHALL BE MADE IN ACCORDANCE WITH THE LATEST STANDARD OF THE IEEE AND THE NATIONAL ELECTRICAL CODE.
- MINIMUM CONDUCTOR SIZE SHALL BE #12, 600V INSULATION. MINIMUM SIZE CONDUIT SHALL BE 3/4" EMT FOR INTERIOR USE AND 1/2" RIGID ALUMINUM FOR EXTERIOR USE. USE TYPE NMC CABLE COPPER FOR LIGHTS AND RECEPTACLE CIRCUITS. EXTERIOR FITTINGS SHALL BE CAST BOXES AND COVERS. INTERIOR FITTINGS SHALL BE CAST WHERE EXPOSED ON WALLS. STAMPED BOXES MAY BE USED ABOVE CEILINGS IN AIR CONDITIONED SPACES. MC MAY BE USED FOR LIGHTING WIHPS.
- CONTRACTOR SHALL INSTALL WIRING AND OTHER CIRCUIT COMPONENTS TO MATCH EQUIPMENT ACTUALLY INSTALLED.
- INSTALL GROUND FAULT RECEPTACLES AT RECEPTACLE LOCATIONS WITHIN 5 FEET OF SINKS OR LAVATORIES, AND AT EXTERIOR LOCATIONS. EXTERIOR RECEPTACLES SHALL ALSO BE WATERPROOF.
- BONDING AND GROUNDING SHALL BE IN ACCORDANCE WITH NFPA 70:230-63, NFPA 250-23, 250-71 AND 250-72.
- GROUND NEUTRAL IN ACCORDANCE WITH NFPA 70:250-23b.
- FUSES SHALL BE ITT CLASS K, 250 VOLT, 200000 AMP INTERRUPTING CAP.
- PROVIDE SERVICES OF A FIRE SMOKE DETECTION AND ALARM COMPANY TO DESIGN AND INSTALL ALARM SYSTEM TO MEET REQUIREMENTS OF THE STATE FIRE MARSHAL.
- EXTERIOR LIGHTING SHALL BE SHADDED OR INWARDLY DIRECTED IN SUCH A MANNER THAT NO DIRECT LIGHTING OR GLARE IS CAST BEYOND THE PROPERTY LINE. THE INTENSITY OF SUCH LIGHTING SHALL NOT EXCEED ONE FOOT CANDLE AS MEASURED AT THE ABUTTING PROPERTY LINE.
- ALL ELECTRICAL, MECHANICAL AND PLUMBING PENETRATING FIRE PARTITIONS SHALL BE FIRE CALLED. (PENETRATIONS THROUGH RATED CONSTRUCTION SHALL BE SEALED WITH A MATERIAL CAPABLE OF PREVENTING THE PASSAGE OF FLAMES AND HOT GASES WHEN TESTED IN ACCORDANCE WITH ASTM-E814).
- TYPES EX1450, EX16SN, EX18SN, EX18SN, EX20SN, EX20SBV, EX20SNZ, EZ3SN, EZ3SNZ, EZ25DO, EZ3DN, EZ32DN, EZ32N, EZ41TN, EZ41TNZ, EZ48TN, EX18CN, EX18CNG, EZ20CH, EZ20CHG, EZ20CN, NON-METALLIC BOXES. FOR USE IN FIRE RESISTANCE WALLS CONSTRUCTED IN WOOD OR NONBEARING STEEL STUDS AND GYPSUM WALLBOARD WITH 2 HOURS OR LESS CLASSIFICATION PERIODS. CLEARANCE BETWEEN BOXES AND CUTOUTS SHALL NOT EXCEED 1/2 INCH. THE AREA OF OPENINGS FOR BOXES SHALL NOT AGGREGATE MORE THAN 100 SQUARE INCHES OF WALL OR PARTITION AREA WITH NO OPENING EXCEEDING 22.0 SQUARE INCHES. OUTLET BOXES ON OPPOSITE STUDS OF WALL OR PARTITION SHALL BE SEPARATED BY A HORIZONTAL DISTANCE OF NOT LESS THAN 24 INCHES.
- CONTRACTOR SHALL BALANCE ALL PANELS.

LEGEND

- ⚡ - SWITCH
- ⊕ - DUPLEX OUTLET
- ⊕ - DUPLEX WEATHERPROOF GR OUTLET
- ⊕ - POWER LIGHTING PANEL
- ⊕ - 4 FT. 2 BULB FLUORESCENT FIXTURE
- ⊕ - EXIT EMERGENCY LIGHT W/ 90 MIN. BATTERY BACKUP
- ⊕ - EXTERIOR WALL SCONCE LIGHT W/ 90 MIN BATTERY BACKUP
- ⊕ - FUSED DISCONNECT



DAMMON ENGINEERING, INC.
 CHIEF ENGINEER
 EMMETT DAMMON, P.E.
 CHIEF ARCHITECT
 ROBERT WILTISE

1095 FLORIDA AVENUE
 SUDELL, LA. 70458
 OFFICE: 985-649-5832
 FAX: 985-641-5950

WWW.DAMMONENGINEERING.COM
 EMAIL: DAMMONEN@BELLSouth.NET

ARCHITECTURE
 ENGINEERING
 STUDIES
 PLANNING
 INVESTIGATION
 EXPERT WITNESS

NEW TRAINING MODULE

ARC MECHANICAL/
 N. O. P. T.
 427 OZONE PARK RD
 COVINGTON, LA

POWER & LIGHTING PLANS

REV:

SCALE AS NOTED

JOB#: 2003

DATE: 09-26-08

SHEET

E-1

OF