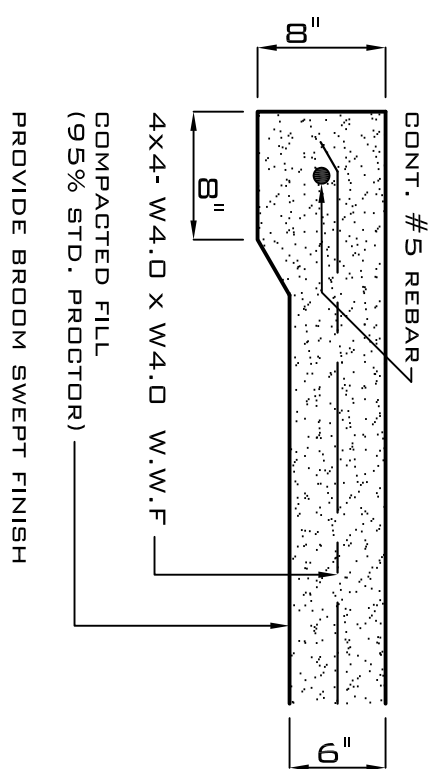


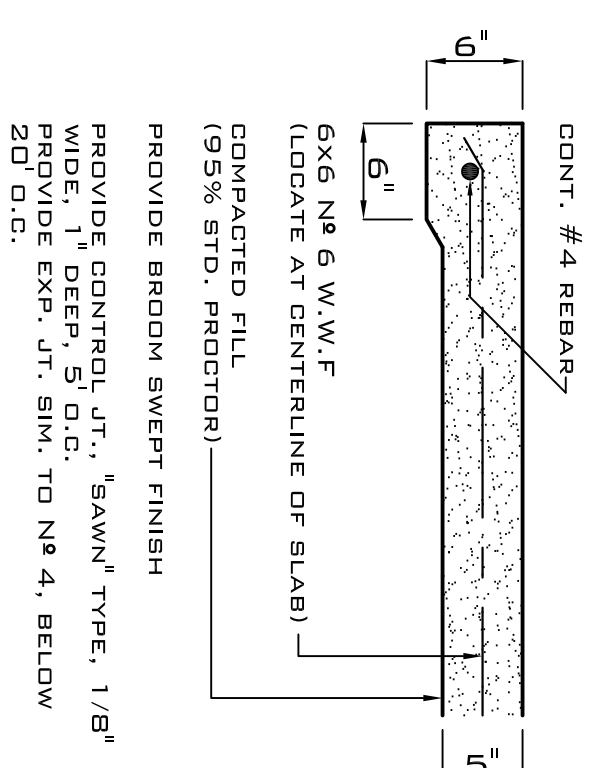
SITE PLAN

1" = 20'-0"

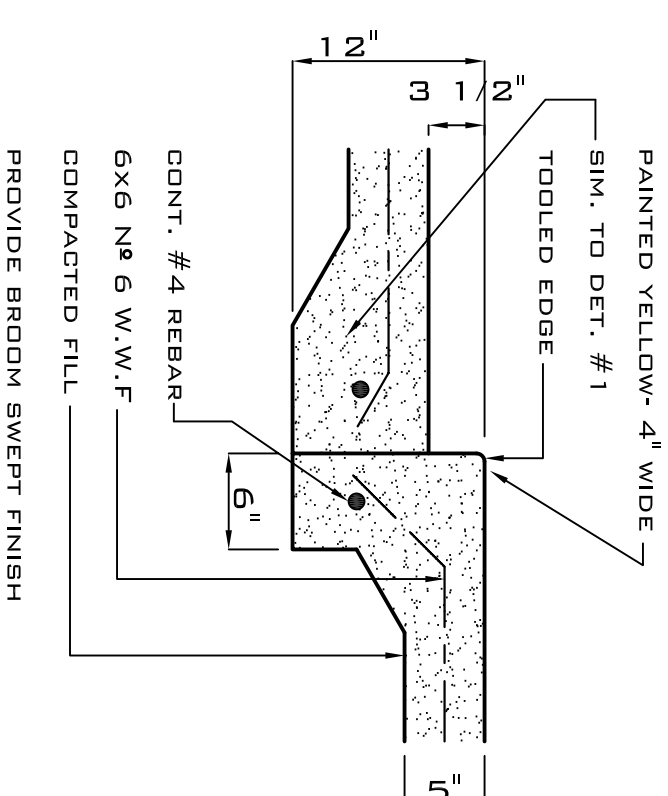
1 DRIVEWAY



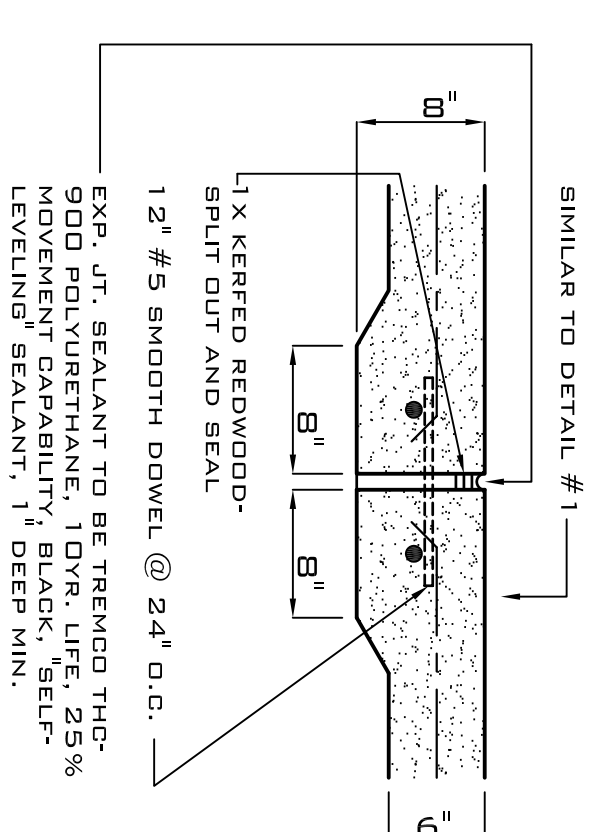
2 SIDEWALK



3 CURB

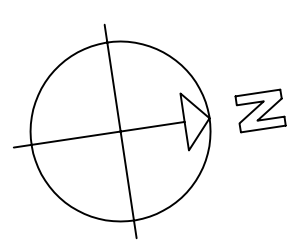


4 EXPANSION JOINT



CONCRETE PAVING DETAILS

1" = 1'-0"



07-15-05

CHILD DEVELOPMENT COUNCIL OF ACADIANA, INC.
New Office Complex
 OPELOUSAS, LA.
ROBERT LEE WILTSE, ARCHITECTS & ASSOC., INC.
 P.O. BOX 2025
 COVINGTON, LA.

A-1