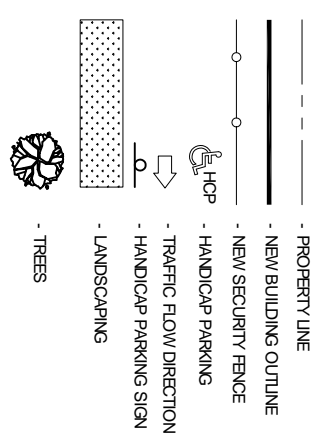


SITE PLAN
SCALE 1" = 20'-0"

PARKING TABULATION	
HIC CARS	3
BUSES	12

LEGEND

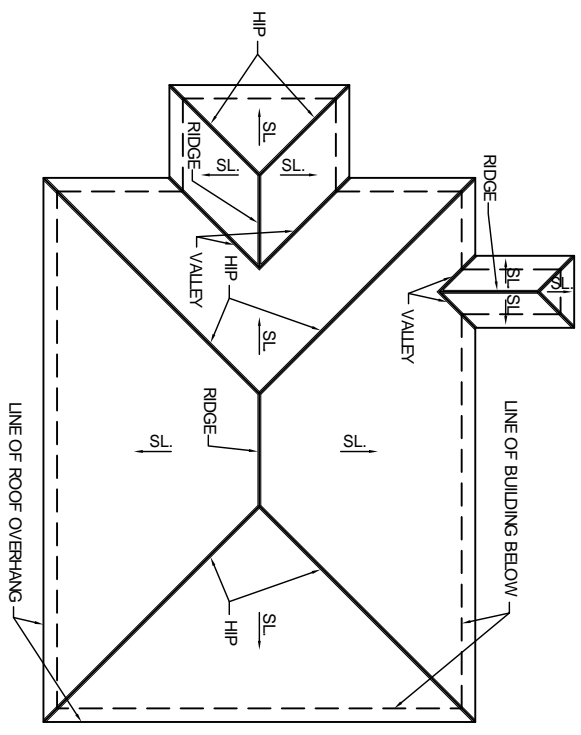


SITE NOTES:

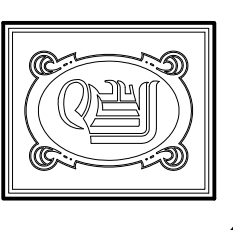
1. CLEAR SITE AS REQD. & AS NOTED TO PERFORM NEW CONSTRUCTION. REMOVE DEBRIS OR MATERIALS NOT SCHED. FOR REUSE. STOCKPILE USABLE TOPSOIL MATERIALS FOR FINISH GRADING.
2. GRADE ENTIRE SITE FROM BUILDINGS AND IMPROVEMENTS TO EXISTING GRADES. AT A UNIFORM SLOPE OF 1/4" SLOPE AS REQD. TO DRAIN WATER TO NATURAL DRAINAGE PATTERNS AND PREVENT ALL STANDING WATER.

GENERAL NOTES:

1. ALL CONTRACTORS SHALL VERIFY EXISTING CONDITIONS, DIMENSIONS, ETC., PRIOR TO BIDDING & CONSTRUCTION.
2. ALL MATERIALS AND WORK SHALL BE IN ACCORDANCE WITH THE SOUTHERN STD. BUILDING CODE, LIFE SAFETY CODE, INTERNATIONAL BUILDING CODE AND ALL OTHER APPLICABLE STATE & LOCAL CODES AND REGULATIONS.



ROOF PLAN
SCALE 1" = 20'-0"



DAMMON ENGINEERING, INC.
CHIEF ENGINEER
EAMMETT DAMMON, P.E.

CHIEF ARCHITECT
ROBERT WILTSE

1095 FLORIDA AVENUE
SLIDELL, LA, 70436
OFFICE: 985-649-5832
FAX: 985-641-5950

WEBSITE: WWW.DAMMONENGINEERING.COM
EMAIL: DAMMONR@BELL.SOUTH.NET

ARCHITECTURE
ENGINEERING
STUDIES
PLANNING
INVESTIGATION
EXPERT WITNESS

NEW OFFICE COMPLEX

CHILD DEVELOPMENT
COUNCIL OF
ACADIANA, INC.
OPELOUSAS, LA

SITE PLAN

REV:

SCALE: AS NOTED

JOB#: 2030

DATE: 7-2-09

SHEET

C-2

OF