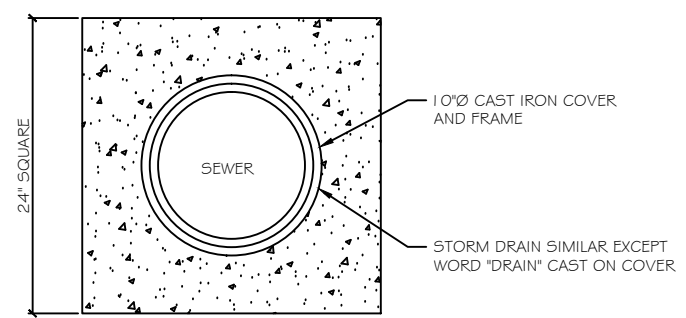
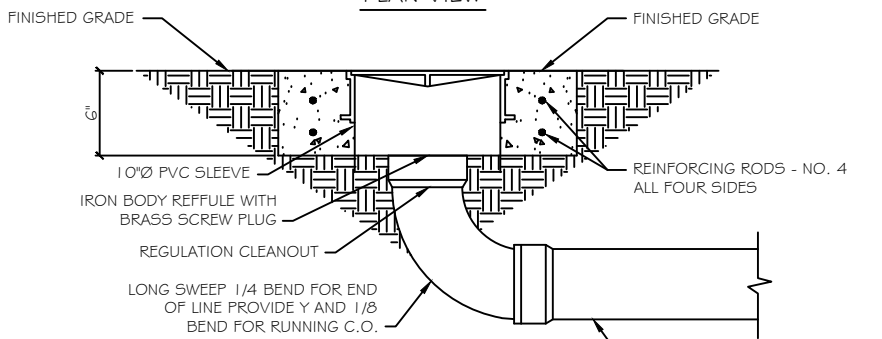


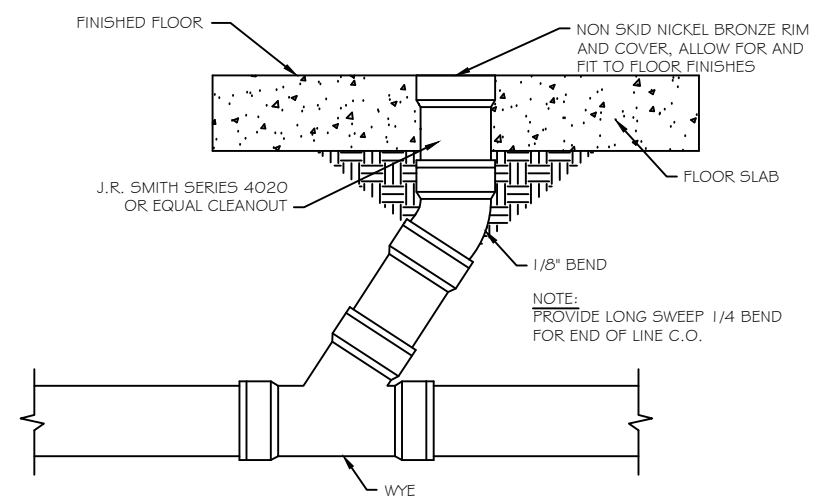
CONDENSING MOUNTING DETAIL
N.T.S.



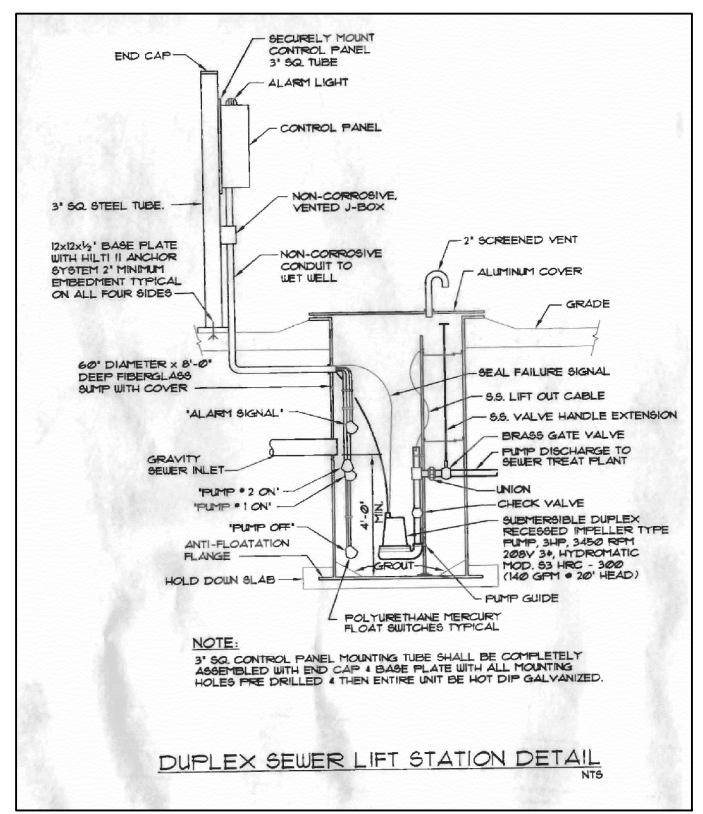
PLAN VIEW



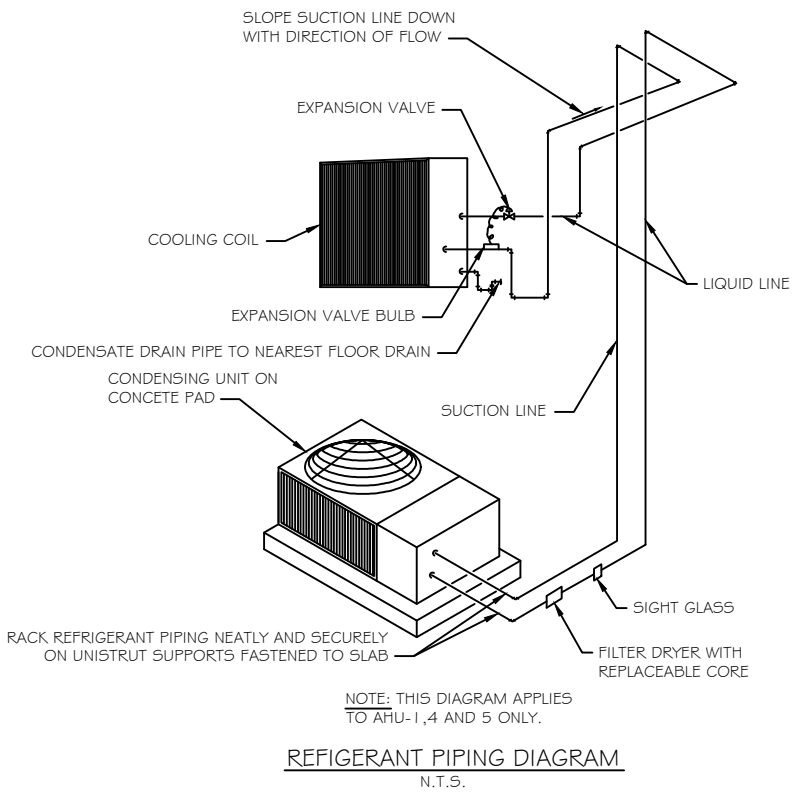
EXTERIOR CLEANOUT DETAIL
N.T.S.



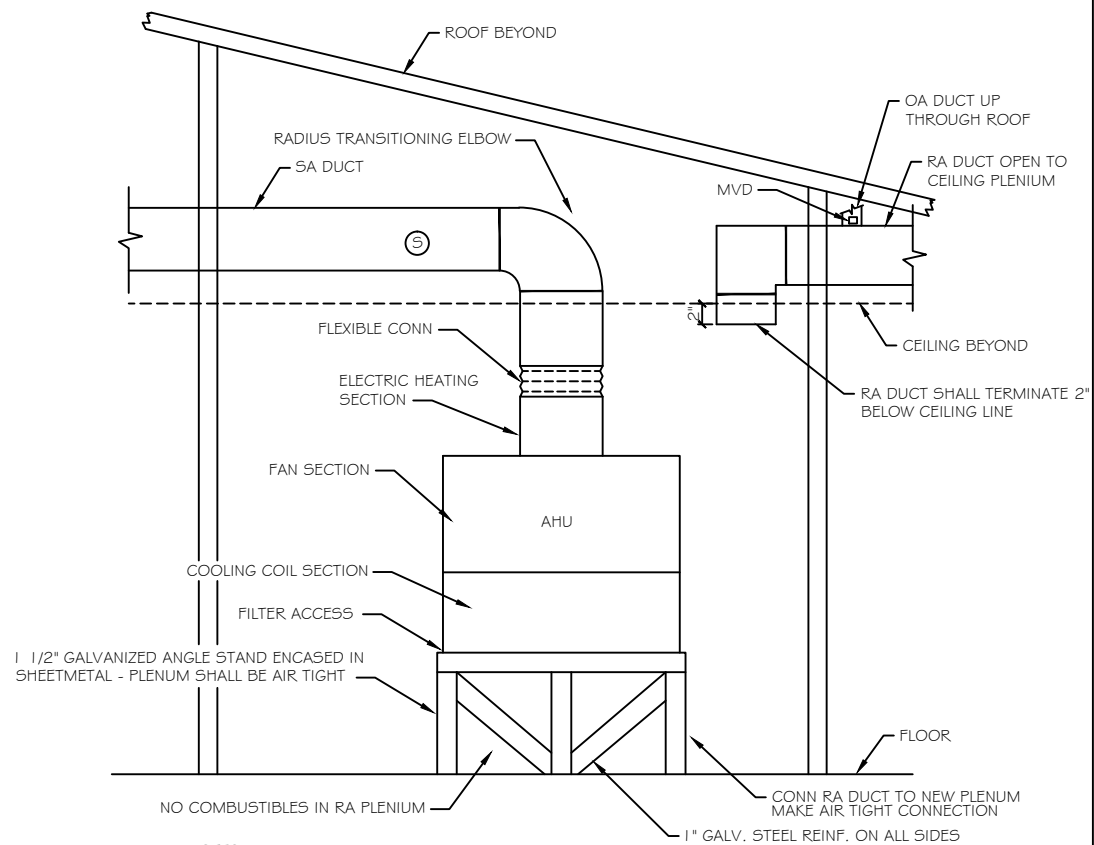
INTERIOR CLEANOUT DETAIL
N.T.S.



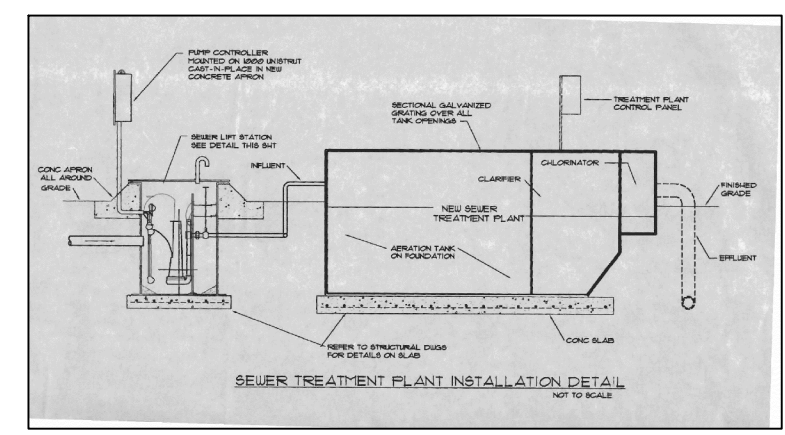
DUPLEX SEWER LIFT STATION DETAIL
N.T.S.



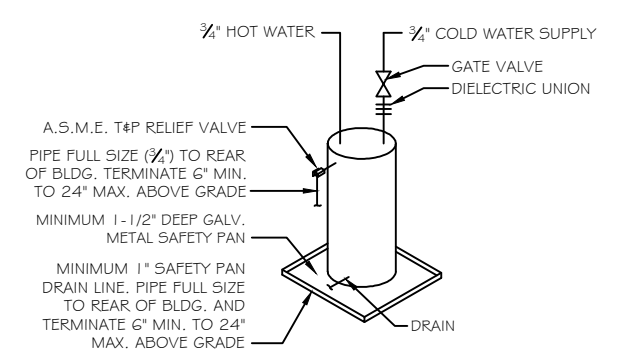
REFRIGERANT PIPING DIAGRAM
N.T.S.



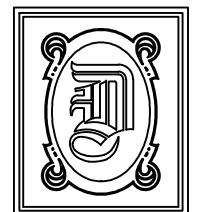
AIR HANDLING UNIT INSTALLATION DETAIL
N.T.S.



SEWER TREATMENT PLANT INSTALLATION DETAIL
NOT TO SCALE



TYPICAL WATER HEATER
N.T.S.



DAMMON ENGINEERING, INC.

CHIEF ENGINEER
EMMETT DAMMON, P.E.

CHIEF ARCHITECT
ROBERT WILTSE

1095 FLORIDA AVENUE
SLIDELL, LA. 70458
OFFICE: 985-649-5832
FAX: 985-641-5950

WEBSITE:
WWW.DAMMONENGINEERING.COM

EMAIL:
DAMMONENG@BELLSOUTH.NET

ARCHITECTURE
ENGINEERING
STUDIES
PLANNING
INVESTIGATION
EXPERT WITNESS

NEW OFFICE
COMPLEX

CHILD DEVELOPMENT
COUNCIL OF
ACADIANA, INC.
OPELOUSAS, LA

MECHANICAL
DETAILS

REV: 12-7-09 CONST.

SCALE: AS NOTED

JOB#: 2030

DATE: 10-19-09

SHEET 19

M-2

OF 26