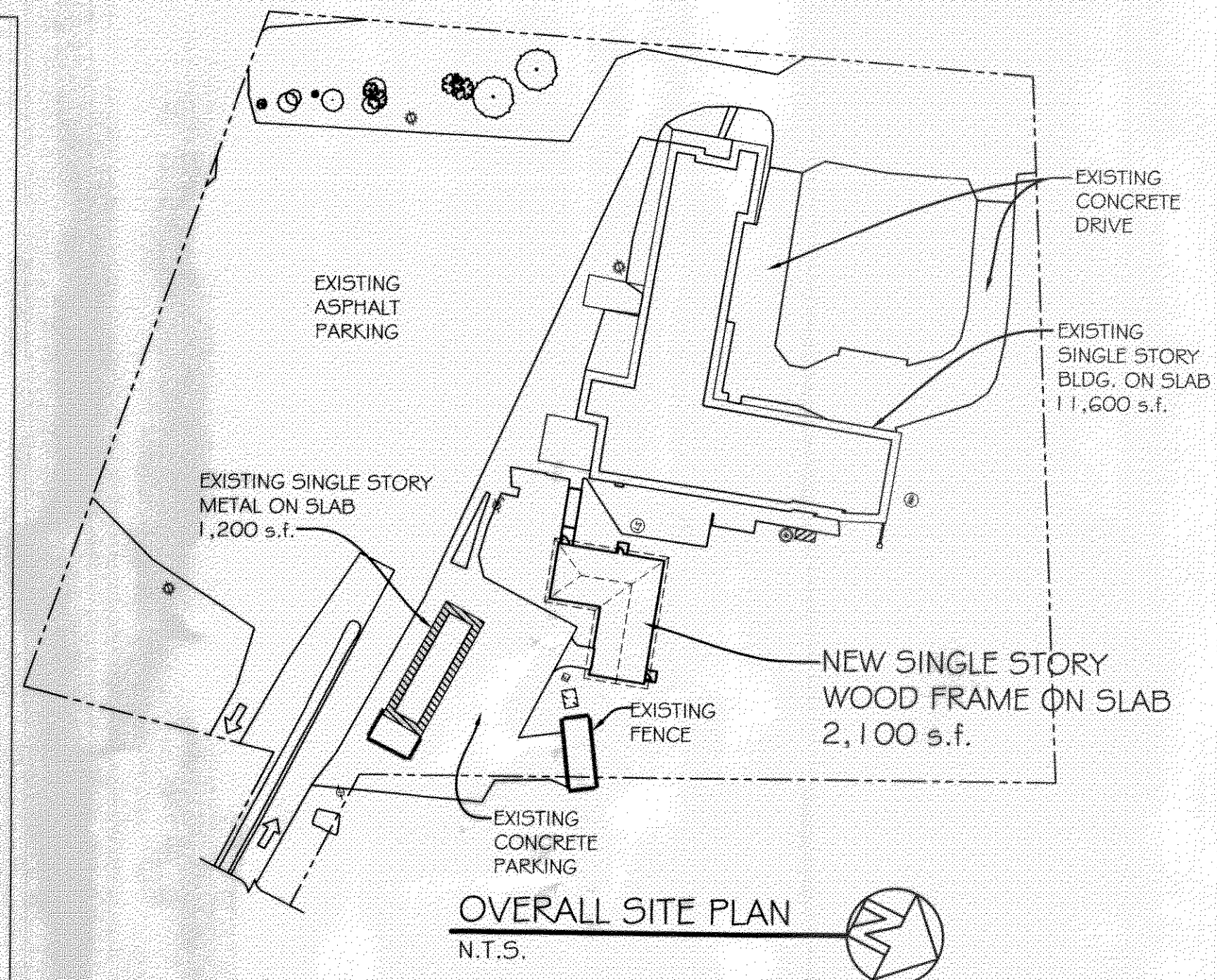


PARTIAL SITE PLAN
SCALE: 1" = 10'-0"



OVERALL SITE PLAN
N.T.S.

LEGEND

- - - - - PROPERTY LINE
- - - - - NEW BLDG. FOOTPRINT
- - - - - NEW FENCE
- - - - - NEW DRAINAGE CATCH BASIN
- TRAFFIC FLOW DIRECTION

PARKING REQUIREMENTS

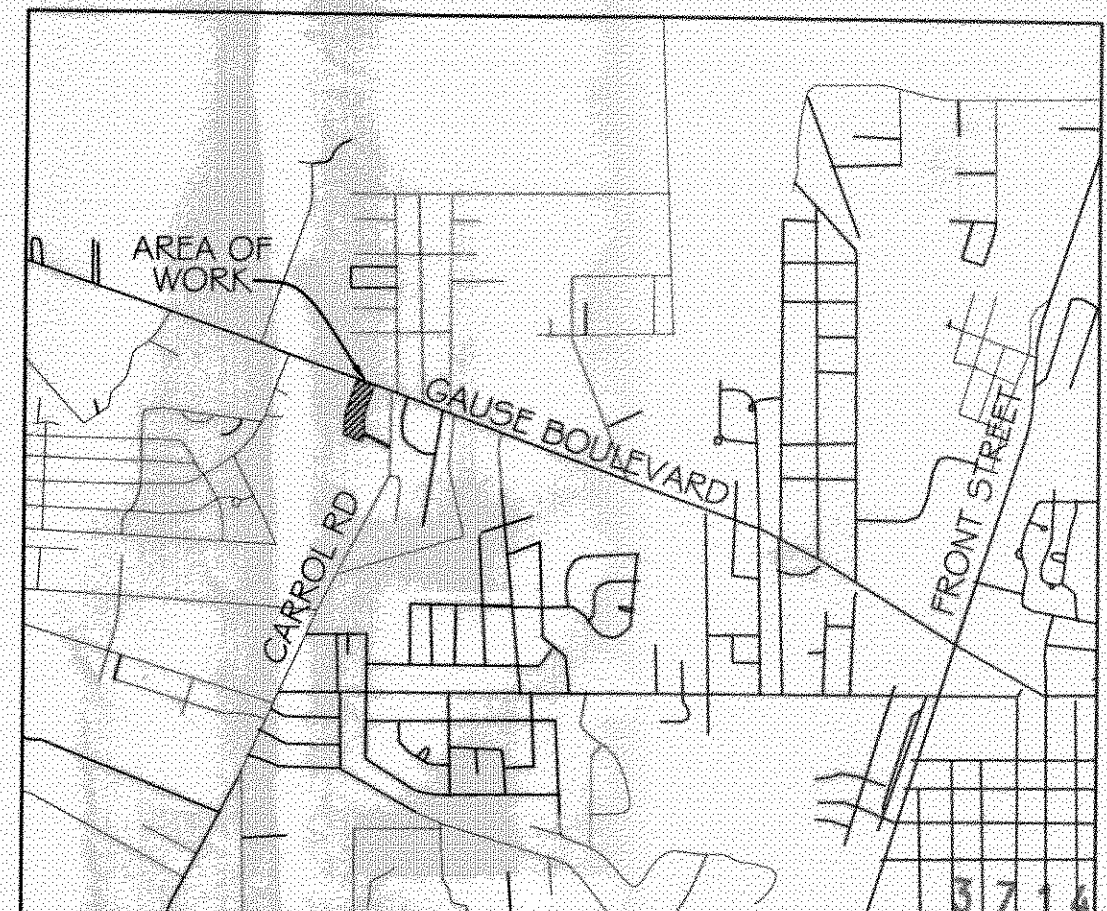
EXISTING ASPHALT PARKING SHALL SERVE NEW CREMATORY BUILDING

SITE LIGHTING

EXTERIOR LIGHTING SHALL BE SHADED OR INWARDLY DIRECTED IN SUCH A MANNER SO THAT NO DIRECT LIGHTING OR GLARE BE CAST BEYOND THE PROPERTY LINE. THE INTENSITY OF SUCH LIGHTING SHALL NOT EXCEED ONE FOOT CANDLE AS MEASURED AT THE ADJUTING PROPERTY LINE. (N/A)

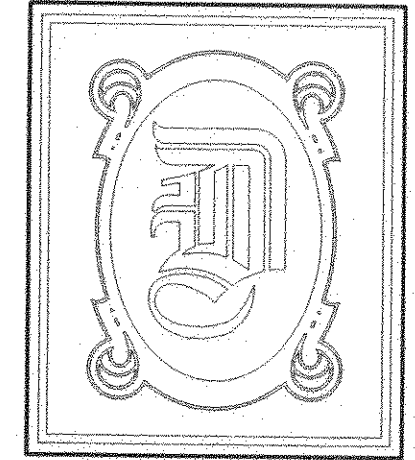
SITE PLAN NOTES

1. ROOFING MATERIAL: 3-TAB ASPHALT SHINGLES
2. SIDING MATERIAL: VINYL SIDING
3. UTILITIES: ALL NEW UTILITIES SHALL BE PLACED UNDERGROUND.



VICINITY MAP
N.T.S.

REVIEWED FOR STATE FIRE MARSHAL AS PER REVIEW LETTER BY: WILLIAM D. JONES, ARCHITECT, CBO
William D. Jones



DAMMON ENGINEERING, INC.

CHIEF ENGINEER
EMMETT DAMMON, P.E.

CHIEF ARCHITECT
ROBERT WILTSE

1095 FLORIDA AVENUE
SLIDELL, LA. 70458
OFFICE: 985-649-5832
FAX: 985-641-5950

WEBSITE:
WWW.DAMMONENGINEERING.COM

EMAIL:
DAMMONENG@BELLSOUTH.NET

- ARCHITECTURE
- ENGINEERING
- STUDIES
- PLANNING
- INVESTIGATION
- EXPERT WITNESS

NEW CREMATION AND EMBALMING FACILITY

HONAKER FUNERAL HOME
TERRY TRANCHINA
1751 W. GAUSE BLVD
SLIDELL, LA

SITE PLAN

REV: *R. B. Wiltse*

SCALE: AS NOTED

JOB#: 1999

DATE: 6-9-09

SHEET 2

C-1

OF 19