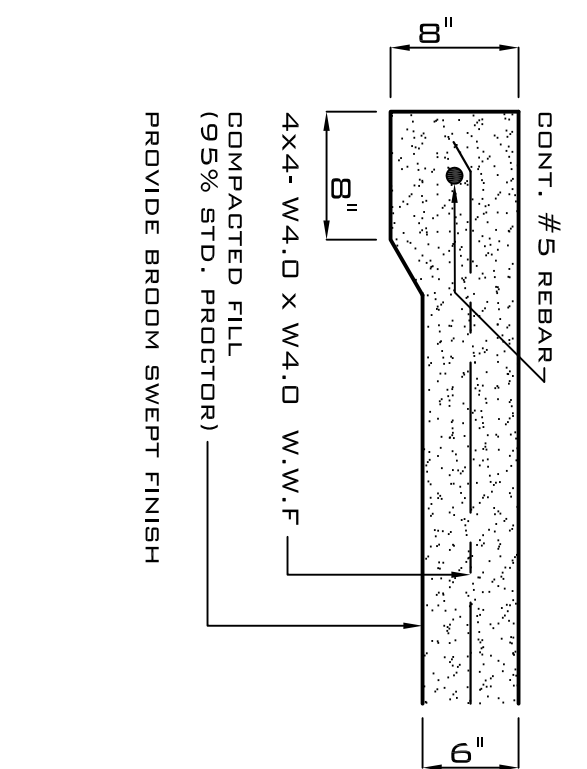
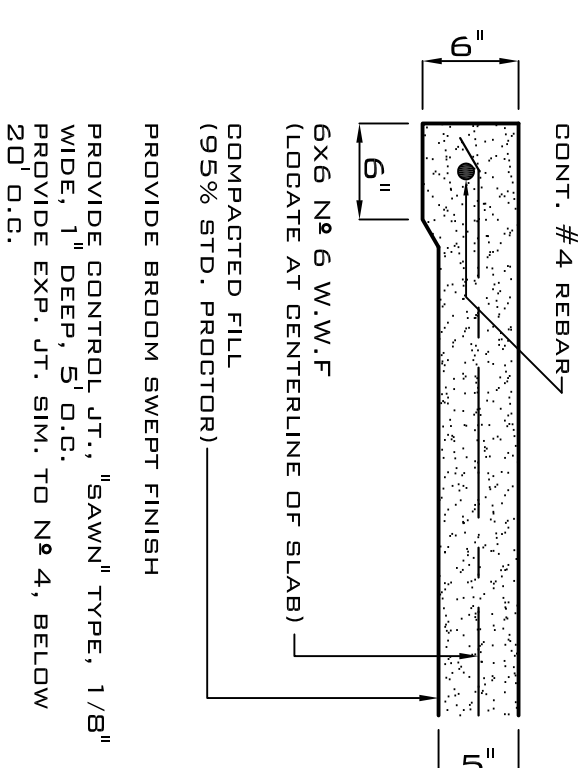


SITE PLAN

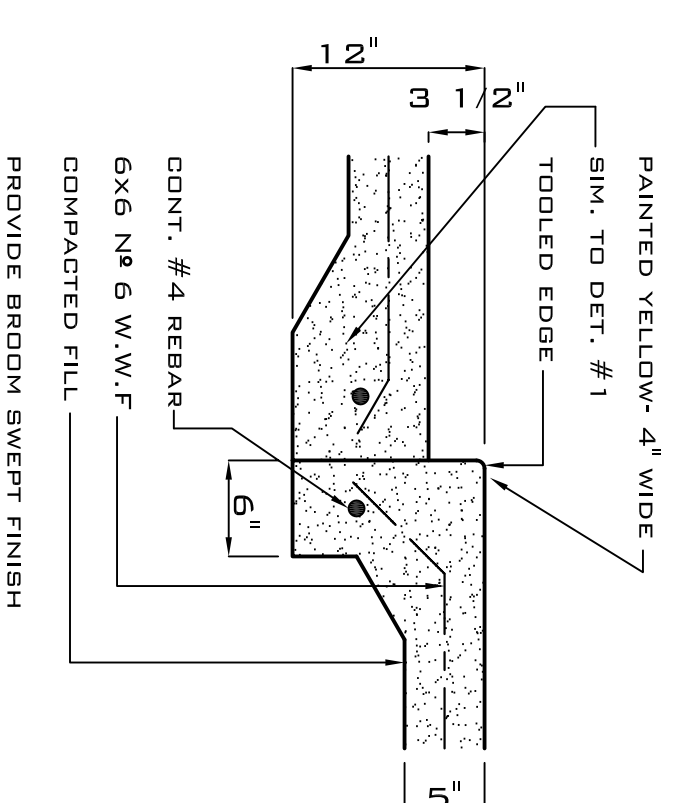
1" = 20'-0"



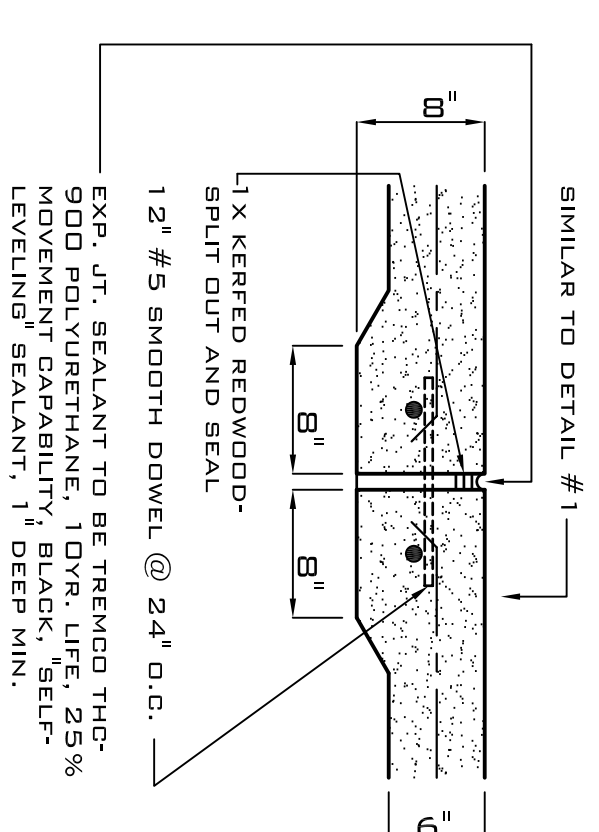
1 DRIVEWAY



2 SIDEWALK



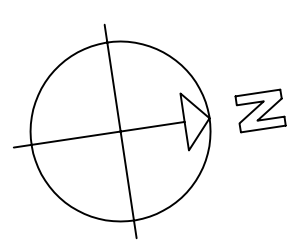
3 CURB



4 EXPANSION JOINT

CONCRETE PAVING DETAILS

1" = 1'-0"



08-19-05

CHILD DEVELOPMENT COUNCIL OF ACADIANA, INC.
New Office Complex
 OPELOUSAS, LA.
ROBERT LEE WILTSE, ARCHITECTS & ASSOC., INC.
 P.O. BOX 2025
 COVINGTON, LA.

A-1