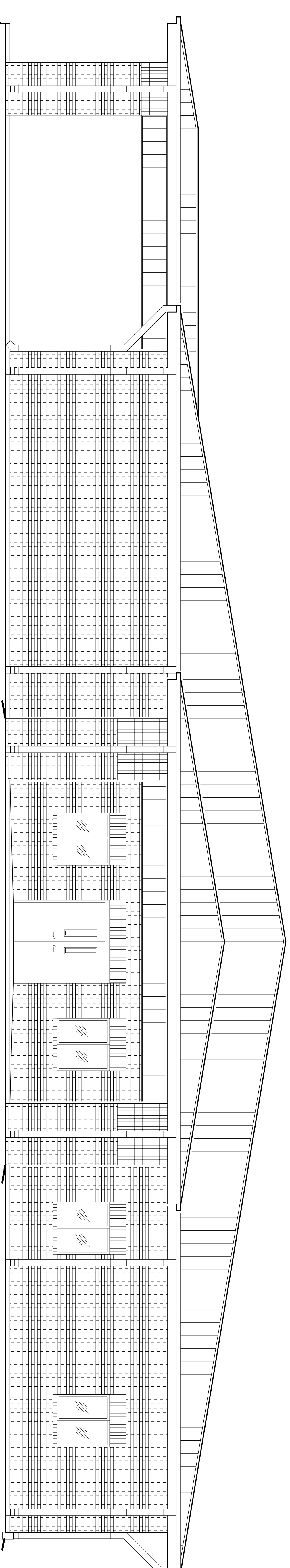


CHILD DEVELOPMENT COUNCIL OF ACADIANA, INC.



NEW OFFICE COMPLEX OPELOUSAS, LA

INTERNATIONAL BUILDING CODE 2006 REQUIREMENTS

OCCUPANCY CLASSIFICATION:
 BUSINESS, GROUP B. (SECT. 304.1)
 ASSEMBLY, GROUP A-3. (SECT. 303.1)

OCCUPANT LOAD: (TBL. 1004.1.1)
 BUSINESS AREAS = 100 GROSS S.F./OCCUPANT
 ASSEMBLY AREAS = 1004.7 FIXED SEATING, NUMBER OF SEATS, 297.
 5,465 S.F.; BUSINESS = 54 OCCUPANTS
 10,315 S.F.; GROSS BUILDING
 TOTAL OF 351 OCCUPANTS

EXIT ACCESS REQUIREMENTS: (SEC. 101.5)
 2 EXITS REQUIRED FOR > 49 OCCUPANTS IN BUSINESS OCCUPANCY, (2 EXITS PROVIDED)
 2 EXITS REQUIRED FOR > 49 OCCUPANTS IN ASSEMBLY OCCUPANCY, (2 EXITS PROVIDED)

EXIT ACCESS TRAVEL DISTANCE: (SECT. 101.6)
 EXIT ACCESS TRAVEL DISTANCE = 200' UNSPRINKLED.

ALLOWABLE HEIGHT AND BLDG. AREA: (TBL. 503)
 B = 23,000 S.F./4 STORY ALLOWED, THIS PROJECT 1 STORY 5,465 S.F.
 A-3 = 9,500 S.F./2 STORY ALLOWED, THIS PROJECT 1 STORY 4,711 S.F.

CONSTRUCTION CLASSIFICATION: (SEC. 602.5)
 TYPE VB

FIRE RESISTANCE RATING REQUIREMENTS FOR BLDG. ELEMENTS: (TBL. 601)
 STRUCTURAL FRAME = 0 HRS.
 BEARING WALLS (INTERIOR AND EXTERIOR) = 0 HRS.
 NON-BEARING WALLS = 0 HRS.
 FLOOR CONSTRUCTION = 0 HRS.
 ROOF CONSTRUCTION = 0 HRS.

FIRE RESISTANCE RATING REQUIREMENTS FOR EXTERIOR WALLS: (TBL. 602)
 EXTERIOR WALLS WITH 10'2"-X<30" FIRE SEPARATION DISTANCE = 0 HRS.

FIRE ALARM SYSTEM REQUIREMENTS: (SECT. 907)
 THIS BLDG. DOES NOT REQUIRE A FIRE ALARM SYSTEM IN ACCORDANCE WITH SECTION 907.2.1 AND 907.2.2.

FIRE PROTECTION SYSTEM REQUIREMENTS: (SECT. 903)
 THIS BLDG. DOES NOT REQUIRE A FIRE PROTECTION SYSTEM IN ACCORDANCE WITH SECTION 903.2.1.3 GROUP A-3.

CONSTRUCTION DOCUMENTS: (SEC. 1603)
 THIS BLDG. SHALL BE DESIGNED IN ACCORDANCE WITH IBC SECTION 1609 AS A FULLY ENCLOSED BLDG. USING THE FOLLOWING INFORMATION:
 WIND DESIGN DATA:
 DETERMINATION OF WIND LOADS SHALL BE IN ACCORDANCE WITH IBC SEC. 1609.4
 BASIC WIND SPEED (3 SECOND GUSTS) = 130 MPH (FIG. 1609)
 IMPORTANCE FACTOR: CATEGORY II BLDG., IF = 1.00, I5 = 1.0, IW = 1.00 (TBL. 1604.5)
 EXPOSURE B
 DESIGN WIND PRESSURE (ASCE 7-05 FIG. 6-2): 33.6 PSF
 INTERNAL PRESSURE COEFFICIENT (ASCE 7-05 FIG. 6-5): ± 0.18
 LIVE LOADS: (SEC. 1607)
 ASSEMBLY AREA W/ MOVABLE SEATS = 100 PSF UNIFORM,
 OFFICE AREA = 50 PSF UNIFORM, 2000 LB. CONCENTRATED
 LOBBY AREA = 100 PSF UNIFORM, 2000 LB. CONCENTRATED
 CORRIDORS = 100 PSF UNIFORM
 ROOF LIVE LOAD (TBL. 1607.1) = 20 PSF UNIFORM, 300 LB. CONCENTRATED
 GROUND SNOW LOAD (FIG. 1608.2) = 0 PSF

BASED ON THE SURVEY OF THIS PROPERTY BY MORGAN GOUDEAU & ASSOC., REGISTERED LAND SURVEYOR ROBERT WOLFE, JR. No. 4548.
 F.I.R.M. COMMUNITY MAP NO. 220165 0175 B, REVISED 5/3/82.
FLOOD ZONE: C (NO BFE REQUIREMENTS)

APPLICABLE CODES:
 2006 IBC
 2006 NFPA 101
 2006 IMC
 2006 NEC
 2000 LA STATE PLUMBING CODE

INDEX OF DRAWINGS

DWG#	DRAWING NAME	REVISED
C-1	COPY OF SURVEY	
C-2	SITE PLAN / ROOF PLAN	
C-3	DRAINAGE PLAN	
C-4	PAVING PLAN	
C-5	UTILITY PLAN	
S-1	FOUNDATION PLAN	
S-2	MASONRY / PARTITION PLAN	
S-3	MASONRY / PARTITION DETAILS	
A-1	FLOOR PLAN	
A-2	SECTION & SCHEDULES	
A-3	ELEVATIONS	
A-4	ELEVATIONS	
A-5	REFLECTED CEILING PLAN	
A-6	MILL WORK DETAILS	
H-1	HANDICAP DETAILS	
H-2	HANDICAP TITLE SHEET & DETAILS	
M-1	MECHANICAL PLAN	
M-2	MECHANICAL DETAILS	
M-3	MECHANICAL PLAN	
E-1	ELECTRICAL TITLE SHEET	
E-2	LIGHTING PLAN	
E-3	POWER PLAN	
E-4	ELECTRICAL SCHEDULES	
P-1	PLUMBING TITLE SHEET	
P-2	PLUMBING PLAN	

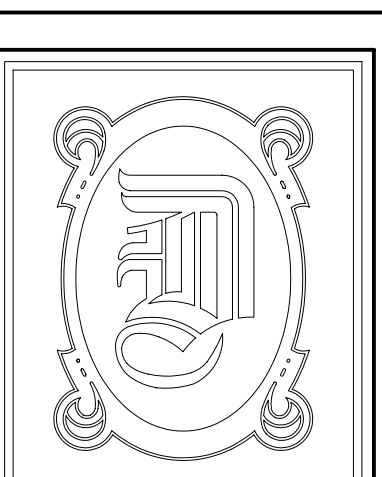
DAMMON ENGINEERING, INC.

1095 FLORIDA AVE. OFFICE: (985) 649-5832

SLIDELL, LA 70458

FAX: (985) 641-5950

WEBSITE: WWW.DAMMONENGINEERING.COM
 EMAIL: DAMMONENG@BELLSOUTH.NET



DATE: 10-19-09
 JOB NO. 2030

REV.: 12-4-09 F.M.
 REV.: 12-7-09 CONST.

CHILD DEVELOPMENT
 COUNCIL OF
 ACADIANA, INC.
 OPELOUSAS, LA