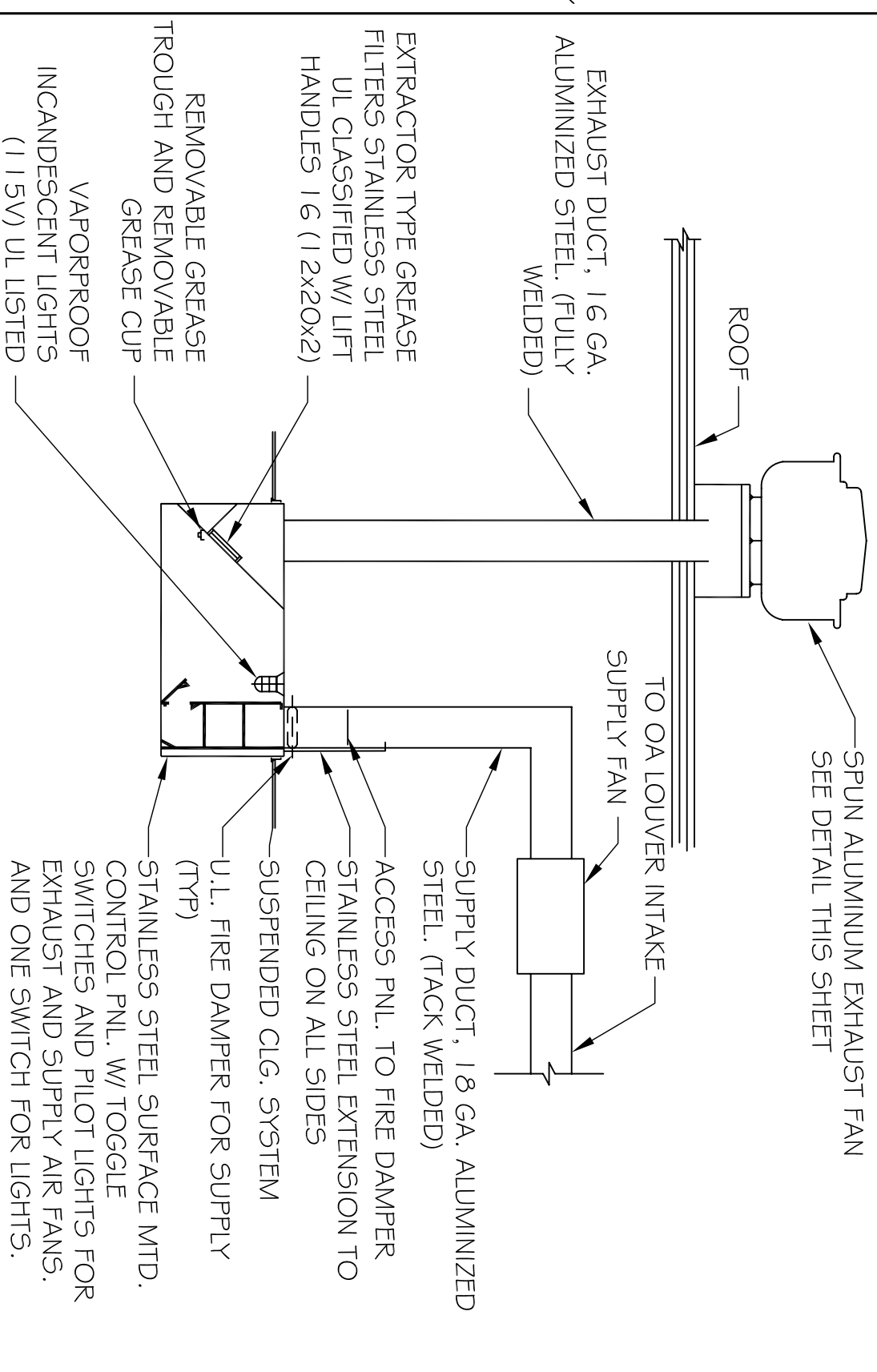


**GENERAL NOTES:**

1. ALL MECHANICAL WORK SHALL BE DONE IN STRICT ACCORDANCE WITH ALL STATE AND LOCAL CODES AND THE REQUIREMENTS OF THE STATE FIRE MARSHAL.
2. ALL BIDDERS MUST VISIT THE SITE PRIOR TO SUBMITTING A BID AND BECOME FAMILIAR WITH ALL EXISTING CONDITIONS AS THEY RELATE TO THE WORK REQUIRED BY THESE DOCUMENTS. BIDDERS SHALL INCLUDE ALL COSTS ASSOCIATED WITH WORK REQUIRED BY EXISTING CONDITIONS. NO ADDITIONAL COMPENSATION SHALL BE AWARDED FOR FAILURE TO BE SO INFORMED.
3. BIDDERS SHALL INCLUDE IN THEIR BID ALL COSTS ASSOCIATED WITH PERMIT FEES, INSPECTIONS, UTILITY CONNECTIONS, METERS, JACKING AND BORING OR CUTTING AND PATCHING OF STREETS AS REQUIRED FOR BUILDING SERVICES, ETC. IT SHALL BE THE RESPONSIBILITY OF ALL BIDDERS TO CONTACT THE APPROPRIATE UTILITY COMPANIES OR CITY DEPARTMENTS AND TO FURNISH THEM WITH ALL PERTINENT INFORMATION ON REQUIRED SERVICES IN ORDER THAT PRICING FOR THESE CONNECTIONS CAN BE FURNISHED TO THE BIDDER IN SUFFICIENT TIME FOR THESE COSTS TO BE INCLUDED IN THE BID. NO ADDITIONAL COMPENSATION SHALL BE AWARDED AFTER BID TIME FOR FAILURE TO OBTAIN AND INCLUDE ALL ASSOCIATED COSTS IN THE BID.
4. CONTRACTOR SHALL COORDINATE ALL MECHANICAL WORK WITH WORK OF THE GENERAL CONTRACTOR AND ALL SUBCONTRACTORS AND EXISTING CONDITIONS, SO AS TO AVOID CONFLICTS.
5. WHERE CUTTING AND PATCHING AND/OR BLOCKOUT INSTALLATION REQUIRED FOR MECHANICAL WORK IS TO BE DONE BY OTHER TRADES, THIS CONTRACTOR SHALL BE RESPONSIBLE FOR COORDINATION AND LAYOUT OF THE REQUIRED WORK.
6. OWNER SHALL HAVE RIGHT OF REFUSAL OF ALL DEMO MATERIALS. MATERIALS NOT CLAIMED SHALL BE REMOVED FROM THE SITE AND DISPOSED OF PROPERLY.
7. MANUFACTURERS' NAMES AND MODEL NUMBERS LISTED ARE MEANT TO ESTABLISH A STANDARD. MANUFACTURERS' PRODUCING EQUIPMENT OF EQUAL CAPACITY AND QUALITY SHALL BE ACCEPTABLE SUBJECT TO THE SUBMITTAL PROCESS.
8. REFER TO WRITTEN SPECIFICATIONS FOR DETAILS NOT COVERED ON THE PLANS, WHERE CONFLICT OCCURS BETWEEN PLANS AND SPECIFICATIONS, THE SPECIFICATION SHALL TAKE PRECEDENCE.

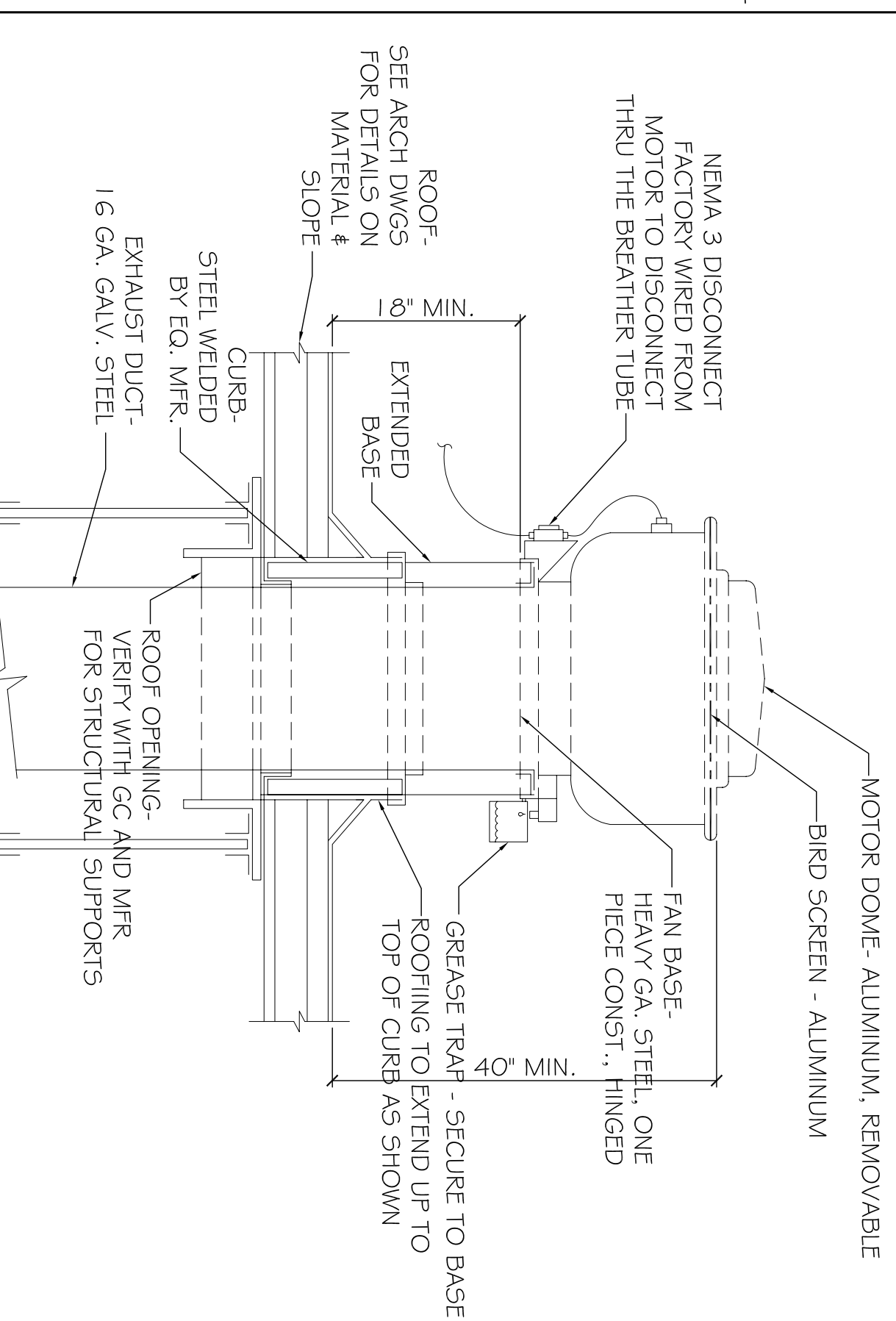
**HVAC NOTES:**

1. PRIOR TO FABRICATION OF ANY EQUIPMENT, DUCTWORK, ETC., CONTRACTOR SHALL REVIEW ENTIRE SET OF CONTRACT DOCUMENTS AND COORDINATE ALL CLEARANCES WITH RESPECT TO STRUCTURAL LIMITATIONS AS WELL AS REQUIRED WORK OF OTHER TRADES. ANY CONFLICTS SHALL BE RESOLVED PRIOR TO FABRICATION OF EQUIPMENT, DUCTWORK, ETC.
2. CONTRACT DOCUMENTS ARE NOT INTENDED TO BE DETAILED SHOP DRAWINGS. THEY DO NOT INDICATE IN HIS BID ALL COSTS FOR THESE OFFSETS THAT MAY BE REQUIRED TO ALLOW FOR STRUCTURAL MEMBERS, WORK OF OTHER TRADES, CROSSING OF DUCTS, ETC. NO ADDITIONAL COMPENSATION SHALL BE AWARDED FOR THIS WORK.
3. CONTRACTOR SHALL PROVIDE ALL REQUIRED PIPING CONNECTIONS TO EACH PIECE OF EQUIPMENT AS REQUIRED FOR THE PROPER OPERATION OF THE EQUIPMENT WHETHER SPECIFICALLY SHOWN OR NOT. THIS SHALL INCLUDE DRAIN PIPING, RELIEF LINES, WATER MAKE UP PIPING, ETC.
4. FLEXIBLE DUCT CONNECTIONS SHALL BE PROVIDED ON EACH FAN POWERED PIECE OF EQUIPMENT.
5. ALL DUCTWORK SHALL BE CONSTRUCTED AND INSTALLED IN STRICT ACCORDANCE WITH SMACNA GUIDELINES.
6. ALL NEW SUPPLY AIR DUCTS, RETURN AIR DUCTS, OUTSIDE AIR DUCTS AND RETURN SHALL BE GALVANIZED STEEL. EXTERNALLY INSULATED WITH 2" THICK, 1" PCF DENSITY INSULATION WITH FOIL FACING. NEW FLEXIBLE DUCTWORK SHALL BE UL 181 LISTED, CLASS 1, PRE INSULATED AND PROPERLY SUPPORTED. PROVIDE SHIM FITTING WITH AIR SCOOB AND DAMPER AT EACH ROUND DUCT CONNECTION TO TRUNK DUCT. HARD ROUND DUCT SHALL BE GALVANIZED SPIRAL WITH EXTERNAL INSULATION. EXHAUST DUCTWORK SHALL BE UNLINED GALVANIZED STEEL. ALL DUCTWORK SEAMS SHALL BE SEALED WITH HARD CAST MASTIC. DUCT SIZES SHOWN ON PLANS ARE SHEET METAL DIMENSIONS.
7. CEILING DIFFUSERS SHALL BE EQUAL TO TTUS MODEL, TDC-A-A ADJUSTABLE. ALUMINUM, LOUVERED FACED DIFFUSER. SQUARE NECK DIFFUSER SHALL BE FURNISHED WITH SQUARE TO ROUND TRANSITION WHERE REQUIRED. REFER TO PLANS, MODULE SIZE SHALL BE 12, 12 OR 24X24 AS INDICATED ON THE DRAWINGS. FINISH WITH BORDER SUITABLE FOR CEILING. FINISH SHALL BE OFF-WHITE BAKED ENAMEL. SIDE WALL SUPPLY REGISTER SHALL BE EQUAL TO TTUS MODEL 300FL EXPANDED ALUMINUM, DOUBLE DETECTION, FRONT BLADES VERTICAL, PROVIDE MODEL AG-15 OPPOSED BLADE DAMPER AT EACH GRILLE. FINISH CHANNEL FRAME, REGISTER SHALL BE OFF-WHITE BAKED ENAMEL. MOUNTING SCREWS SHALL MATCH GRILLE COLOR.
9. CEILING RETURN GRILLE SHALL BE EQUAL TO TTUS MODEL, 350FL ALUMINUM GRILLE WITH 35-BLADE SETTING. SINGLE SET OF BLADES PARALLEL TO THE LONG DIMENSION.
10. REFRIGERANT PIPING SHALL BE OFF-WHITE BAKED ENAMEL.
10. REFRIGERANT PIPING SHALL BE INSTALLED IN STRICT ACCORDANCE WITH MANUFACTURERS' RECOMMENDATIONS. PIPING SHALL BE INSULATED WITH 3/4" ARMAFLEX INSULATION. INSULATION SHALL BE TIGHTLY BUTTED AND ALL SEAMS SEALED WITH WATERPROOF VAPOR BARRIER ADHESIVE.
11. CONDENSATE PIPING SHALL BE TYPE 1" COPPER PIPE WITH COPPER SWEAT FITTINGS. PIPING SHALL BE INSULATED WITH 3/4" ARMAFLEX INSULATION. INSULATION SHALL BE TIGHTLY BUTTED AND ALL SEAMS SEALED WITH WATERPROOF VAPOR BARRIER ADHESIVE.
12. ALL AIR QUANTITIES SHALL BE BALANCED TO WITHIN 10% OF QUANTITIES SHOWN ON THE PLANS BY AN INDEPENDENT BALANCE CONTRACTOR.
13. PROVIDE WALL MOUNTED THERMOSTAT FOR EACH A/C SYSTEM. CONTROL THE CONDENSING UNIT OF THE COOLING CYCLE AND THE ELECTRIC HEATER ON THE HEATING CYCLE.
14. PROVIDE A FIRESTAY IN THE RETURN AIR OF ALL AIR HANDLERS UNDER 5 TONS AND A SMOKE DETECTOR IN THE SUPPLY AIR OF UNIT 5 TONS AND ABOVE. FOR EACH SMOKE DETECTOR FURNISH AND INSTALL A REMOTE ANNUNCIATOR PANEL WITH BOTH AUDIBLE AND VISUAL SIGNALS IN AN OCCUPIED AREA OF THE BUILDING.



**SECTION AT KITCHEN EXHAUST HOOD DETAIL**

N.T.S.

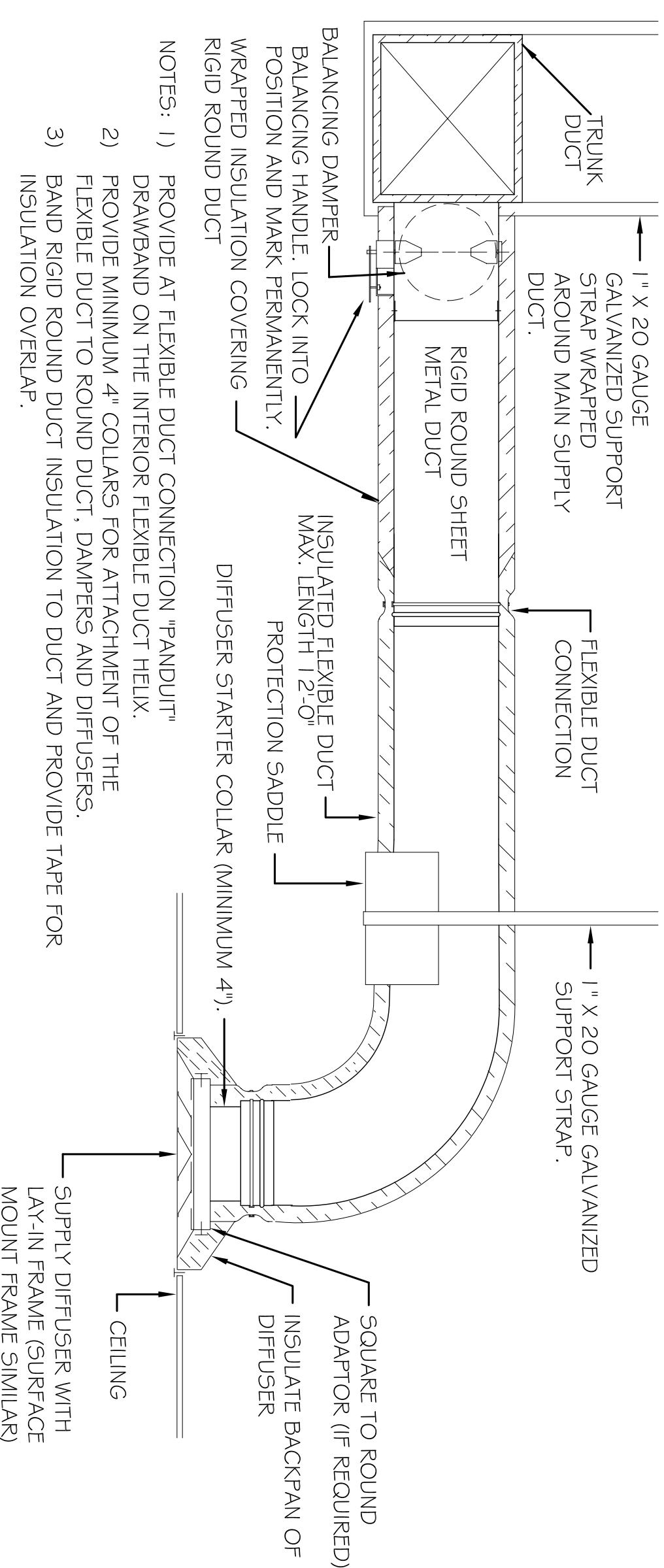


**UPBLAST EXHAUST FAN DETAIL**

N.T.S.

**KITCHEN HOOD SYSTEM NOTES**

1. SUBCONTRACTOR TO SUBMIT SHOP DRAWINGS AND REVIEW PACKAGE SUITABLE FOR FIRE MARSHAL, KITCHEN HOOD REVIEW.
2. SUBCONTRACTOR TO SUBMIT SHOP DRAWINGS AND REVIEW PACKAGE SUITABLE FOR FIRE MARSHAL KITCHEN HOOD CHEMICAL FIRE SUPPRESSION SYSTEM REVIEW.
3. PROVIDE GAS SHUTOFF VALVE FOR ALL EQUIPMENT UNDER HOOD CONNECTED TO HOOD EXHAUST SYSTEM.
4. PROVIDE SHUNT TRIP BREAKERS FOR ALL EQUIPMENT UNDER HOOD CONNECTED TO HOOD EXHAUST SYSTEM.



**DIFFUSER CONNECTION DETAIL-FLEX DUCT**

N.T.S.

	AHU-1	AHU-2	AHU-3	EF-1	EF-2	EF-3	HOOD
OUTSIDE AIR FLOW (CFM)	200	600	250				1200
RETURN AIR FLOW (CFM)	1300	3150	1625				
SUPPLY AIR FLOW (CFM)	1500	3750	1875				
EXHAUST AIR FLOW (CFM)			340	300	85	1600	
BUILDING PRESSURE (CFM)	+200	+600	+250	-340	-300	-85	-400
QUANTITIES			3	1	1	1	2
TOTAL PRESSURIZATIONS	+200	+1800	+250	-340	-300	-85	-400
REMARKS							

RESULTING BUILDING PRESSURIZATION (CFM) = +1040

UNIT NO.	NOM. COOLING CAPACITY (CFM)	TOTAL CAPACITY (CFM)	ELEC HEAT KW	VOLTAGE	UNIT MCA	PTED-15	REMARKS
TWU-1	350	14,300	3.5	208	20	PTED-15	1,2,3

1. CAPACITIES BASED ON STANDARD ARI CONDITIONS.
2. PROVIDE SUB-BASE WITH CONCEALED RECEPTACLE AND POWER CORD.
3. PROVIDE CONDENSATE DRAIN KIT.

**EXHAUST FAN SCHEDULE**

FAN DESIG.	TYPE	BALANCE SELECTION	CFM	5' P. IN INCHES	HP	MOTOR DATA	COOK MODEL NO.	REMARKS
EF-1	CEILING MOUNTED	340	425	0.375	1/3	120	1	1,2,3,4,5
EF-2	CEILING MOUNTED	300	425	0.375	1/3	120	1	GC-1,60
EF-3	CEILING MOUNTED	85	170	0.375	1/6	120	1	1,2,3,4,5
EF-4	NOT USED							
EF-5	CEILING MOUNTED	85	170	0.375	1/6	120	1	GC-1,60

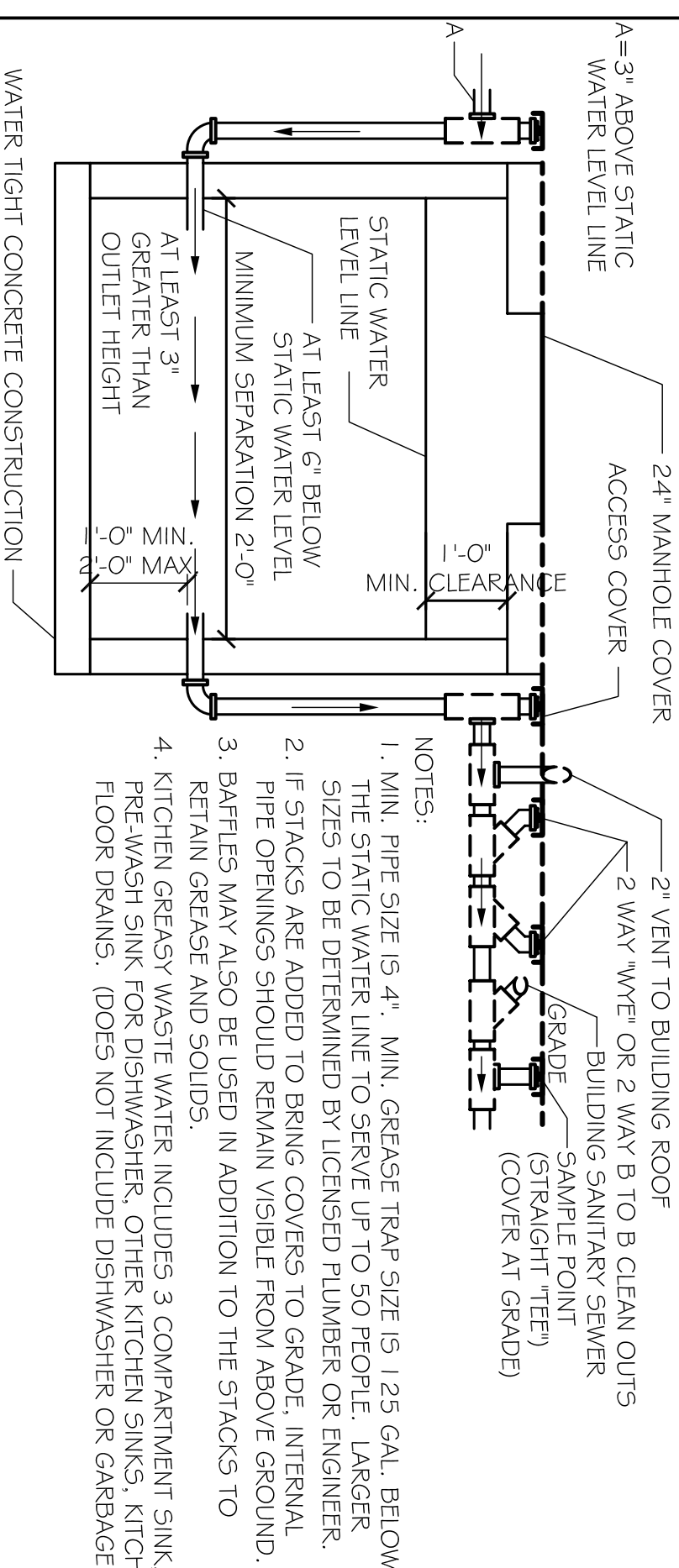
1. FAN SHALL BE SELECTED BASED ON SELECTION CFM AND STATIC PRESSURE LISTED. FAN SHALL BE BALANCED IN FIELD TO BALANCE CFM INDICATED.
2. PROVIDE MANUAL STARTER MOUNTED ON WALL - LOCATION AS DIRECTED BY ARCHITECT.
3. PROVIDE SOLID STATE SPEED SWITCH MOUNTED ON FAN.
4. PROVIDE BACK DRAFT DAMPER AND DISCONNECT SWITCH.
5. PROVIDE ANODIZED ALUMINUM BRICK VENT WITH FAN SIZED PER MANUFACTURERS GUIDELINES OR AS INDICATED ON PLANS.

**HVAC UNIT SCHEDULE**

NO.	AIR CAPACITY			COOLING CAPACITY			AHU HANDLING UNIT			ELECTRIC HEAT			CONDENSING UNIT			REMARKS		
	TOTAL CFM	MINIMUM O.A. CFM	EXT. 5' P. INCHES	TOTAL BTU/HR.	ENTERING DB° F	LEAVING WB° F	MAX. COIL FLOW	FRAME CO. MODEL NO.	MOTOR HP	KW AT 208V/3PH	CONTROL STAGES	FRAME CO. MODEL NO.	VOLTS/PH	UNIT MCA	WEIGHT LBS.			
AHU-1	1500	200	0.5	57,596	76.8	65.9	55.0	53.2	500	TWE 060C	3/4	12	1	TTA 060C	2093	2640	250	1,2,3
AHU-2	3750	600	0.55	136,890	77.4	66.4	56.6	54.6	500	TWE 120B	2	26	2	(2) TTA 072C	2093	2740	275	1,2,3,4
AHU-3	3750	600	0.55	136,890	77.4	66.4	56.6	54.6	500	TWE 120B	2	26	2	(2) TTA 072C	2093	2740	275	1,2,3,4
AHU-4	3750	600	0.55	136,890	77.4	66.4	56.6	54.6	500	TWE 120B	2	26	2	(2) TTA 072C	2093	2740	275	1,2,3,4
AHU-5	1875	250	0.5	68,842	68.842	65.9	56.0	53.8	500	TWE 060C	3/4	12	1	TTA 072C	2093	2740	275	1,2,3

**TYPICAL GREASE TRAP WITH ONE MANHOLE COVER AND EXTERNAL ACCESS COVERS**

N.T.S.



1. MIN. PIPE SIZE IS 4\"/>

**DAMMON ENGINEERING, INC.**  
CHIEF ENGINEER  
EMMETT DAMMON, P.E.  
CHIEF ARCHITECT  
ROBERT WILTSE

1095 FLORIDA AVENUE  
SUITE 111, LA. 70458  
OFFICE: 985-649-5832  
FAX: 985-641-5950

WWW.DAMMONENGINEERING.COM  
WEBSITE:

**NEW OFFICE COMPLEX**

PLANNING  
INVESTIGATION  
EXPERT WITNESS

EMAIL:  
DAMMONENG@BELL.SOUTH.NET

ARCHITECTURE  
ENGINEERING  
STUDIES

CHILD DEVELOPMENT  
COUNCIL OF  
ACADIANA, INC.  
OPELOUSAS, LA

MECHANICAL  
TITLE SHEET  
# DETAILS

REV: 12-7-09 CONST.

SCALE: AS NOTED

JOB#: 2030  
DATE: 10-19-09  
SHEET 18

M-1

OF 26