

DAMMON
ENGINEERING, INC.

CHIEF ENGINEER
EMMETT
DAMMON, P.E.
CHIEF ARCHITECT
ROBERT
WILTSE

1 095 FLORIDA AVENUE
SLIDELL, LA, 70458
OFFICE: 985-649-5832
FAX: 985-641-5950

WEBSITE:
WWW.DAMMONENGINEERING.COM
EMAIL:
DAMMONENG@BELL.SOUTH.NET

ARCHITECTURE
ENGINEERING
STUDIES
PLANNING
INVESTIGATION
EXPERT WITNESSES

NEW OFFICE
COMPLEX

CHILD DEVELOPMENT
COUNCIL OF
ACADIANA, INC.
OPELOUSAS, LA

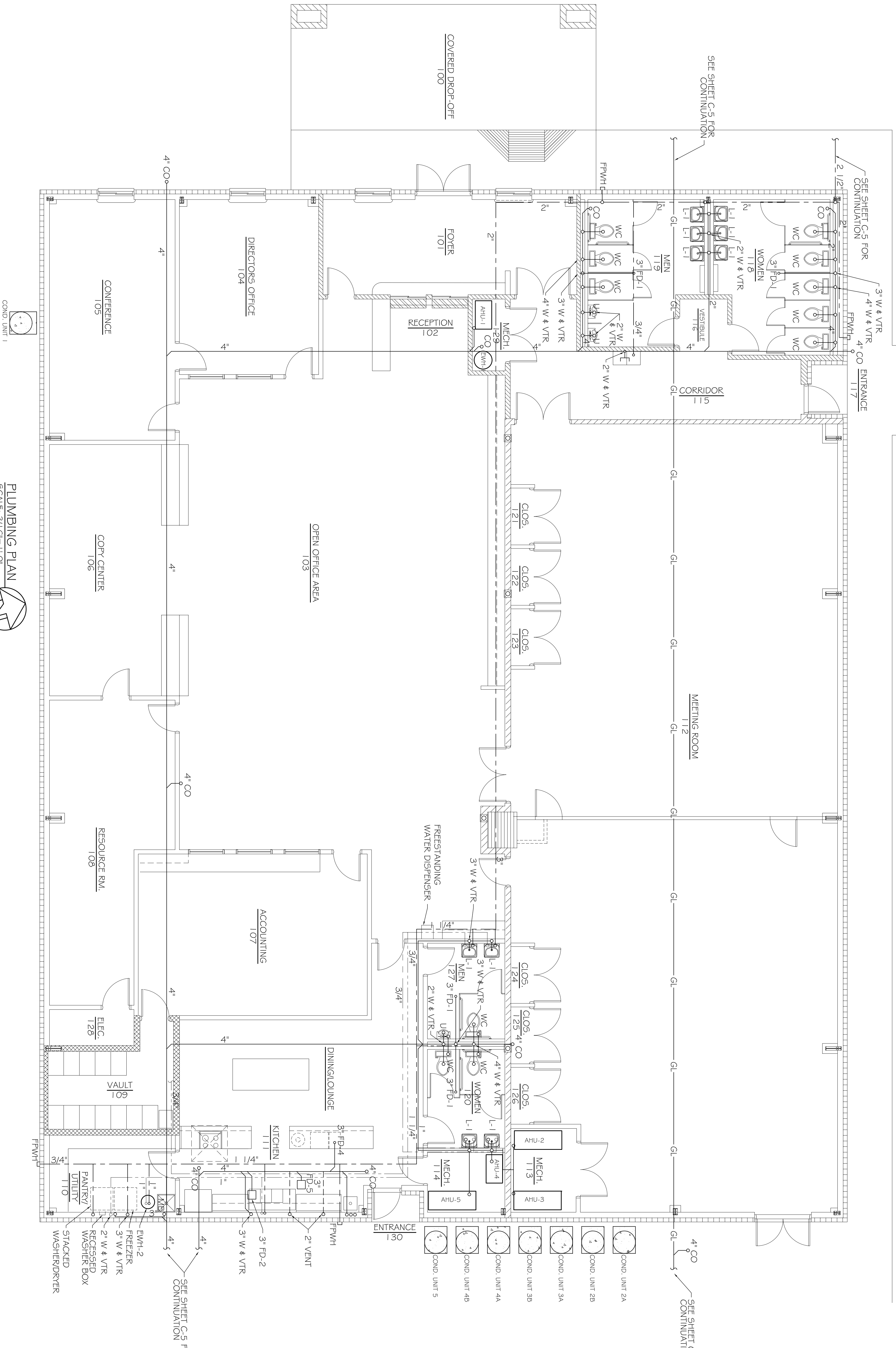
PLUMBING
PLAN

REV.: 12-7-09 CONST.
SCALE: AS NOTED
JOB#: 2030
DATE: 10-19-09
SHEET 26

P-2

OF 26

LEGEND	
	- SOIL & WASTE PIPING
	- VENT PIPING
	- GREASE LINE PIPING
	- COLD WATER PIPING
	- HOT WATER PIPING
	- HOT WATER RETURN PIPING
	- BALL VALVE
	- VALVE IN C.I. BOXES/ECS
	- CLEANOUT
	- CHECK VALVE
	- FREEZE PROOF WALL HYDRANT
	- VENT THRU ROOF



PLUMBING PLAN
SCALE: 3/16" = 1'-0"

