

1/2" OR 5/8" THICKNESSES AS SHOWN ON PLAN. INSTALL ALL IN ACCORDANCE WITH MANUFACTURER'S RECOMMENDATIONS WITH SCREWS AND ADHESIVE. PROVIDE MANUFACTURER'S STANDARD WARRANTY. INCLUDE ALL ACCESSORIES AND TRIM AS REQUIRED.

KITCHEN WALL PANELS TO BE MEYERHAUSER NR NOMINAL 1/4" THICKNESS PREFINISHED PANELS. INSTALL ALL IN ACCORDANCE WITH MANUFACTURER'S RECOMMENDATIONS. CO-ORDINATE WITH ARCHITECT.

**DIVISION 10 - SPECIALTIES**

FIRE EXTINGUISHERS TO BE MULTI-PURPOSE DRY CHEMICAL TYPE 4A-60BC, 10LB. CAPACITY WITH STANDARD MOUNTING BRACKET EQUAL TO J.L. INDUSTRIES COSMIC 10E.

GRAB BARS TO BE 18GA. STAINLESS STEEL, 1, 1 1/4" DIAMETER WITH STANDARD NON-SLIP TEXTURE IN DIMENSIONS AS SHOWN, 33" A.F.F., BOBRICK OR EQUAL.

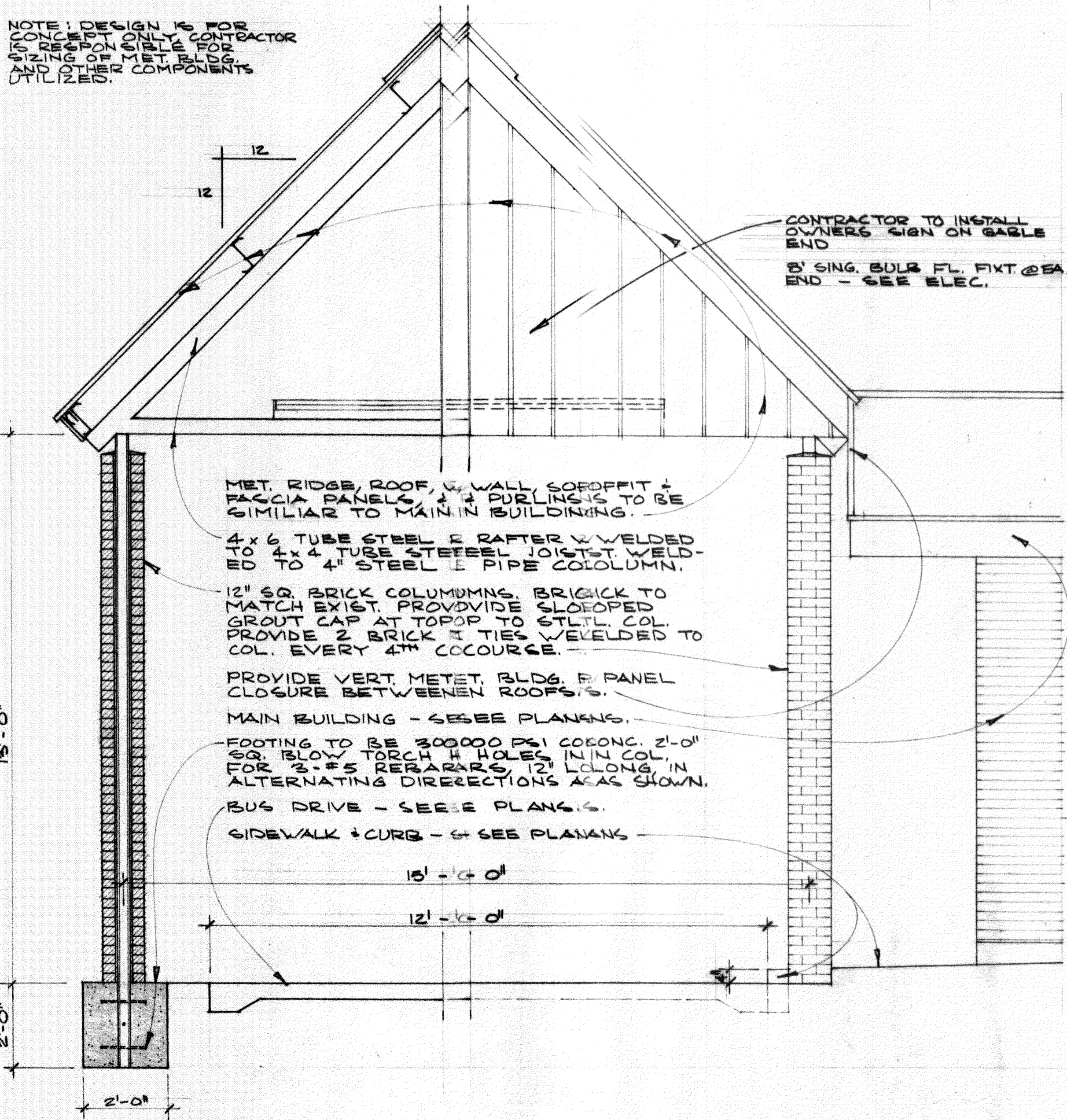
PROVIDE (1) H/C PARKING STEEL POST MOUNTED SIGN AND (1) H/C ENTRANCE WALL MOUNTED SIGN, MOHAWK SIGN SYSTEMS OR EQUAL, HC-1000, SERIES 400, 16"X20" ANSISI ACCEPTABLE, LOCATE AS PER PLAN.

MIRRORS TO BE 1/4" CLEAR PLATE, WITH FIVE-FIVE REFLECTANT COATS, IN DIMENSIONS AS SHOWN ON PLANS, WITH GROUND AND POLISHED EDGES, ANCHORED WITH NICKEL CLIPS.

TOILET PAPER HOLDERS TO BE BOBRICK B-64 6477 PATM IN FINISHED STAINLESS STEEL, RECESSED.

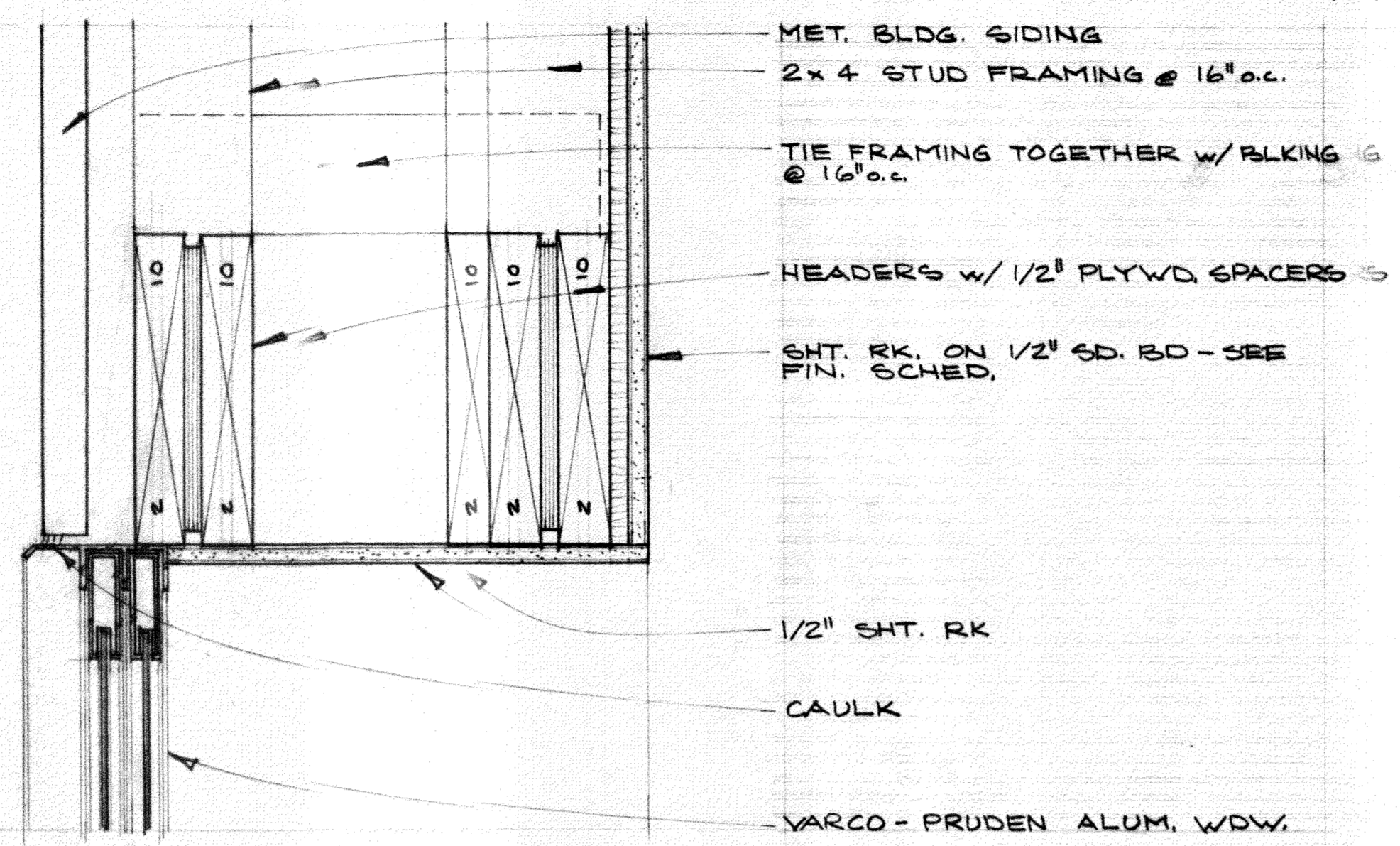
TACKBOARDS TO BE CONTEMPORARY PRODUCTS, T.B. INC., 1/2" THICK HOMOSOTE BOARD WRAPPED WITH BUILSFORD 701 701 FABRIC, ADHERED TO WALL AS PER MANUFACTURER'S RECOMMENDATIONS. CONT. SHT. 10

NOTE: ONE SIGN IS FOR CONSTRUCTION ONLY. CONTRACTOR TO REMOVE SIGN AFTER CONSTRUCTION AND REPLACE WITH PERMANENT SIGN. PROVIDE ALL MATERIALS AND OTHER COMPONENTS UTILIZED.

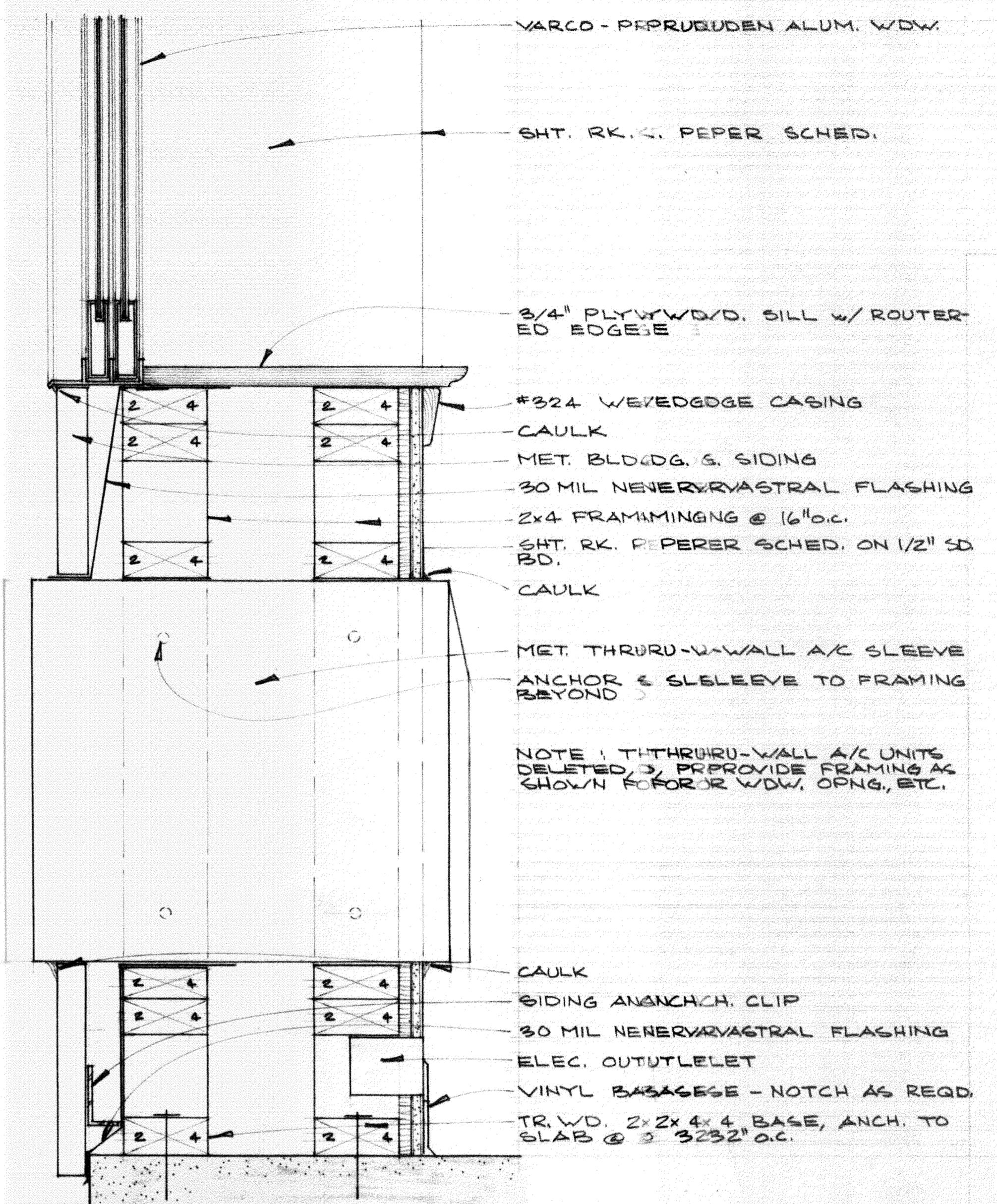


SECTION / ELEVATION AT BUS DROP CANOPY  
ONE HALF INCH = EQUALS ONE FOOT

ONE INCH EQUALS FOUR INCHES

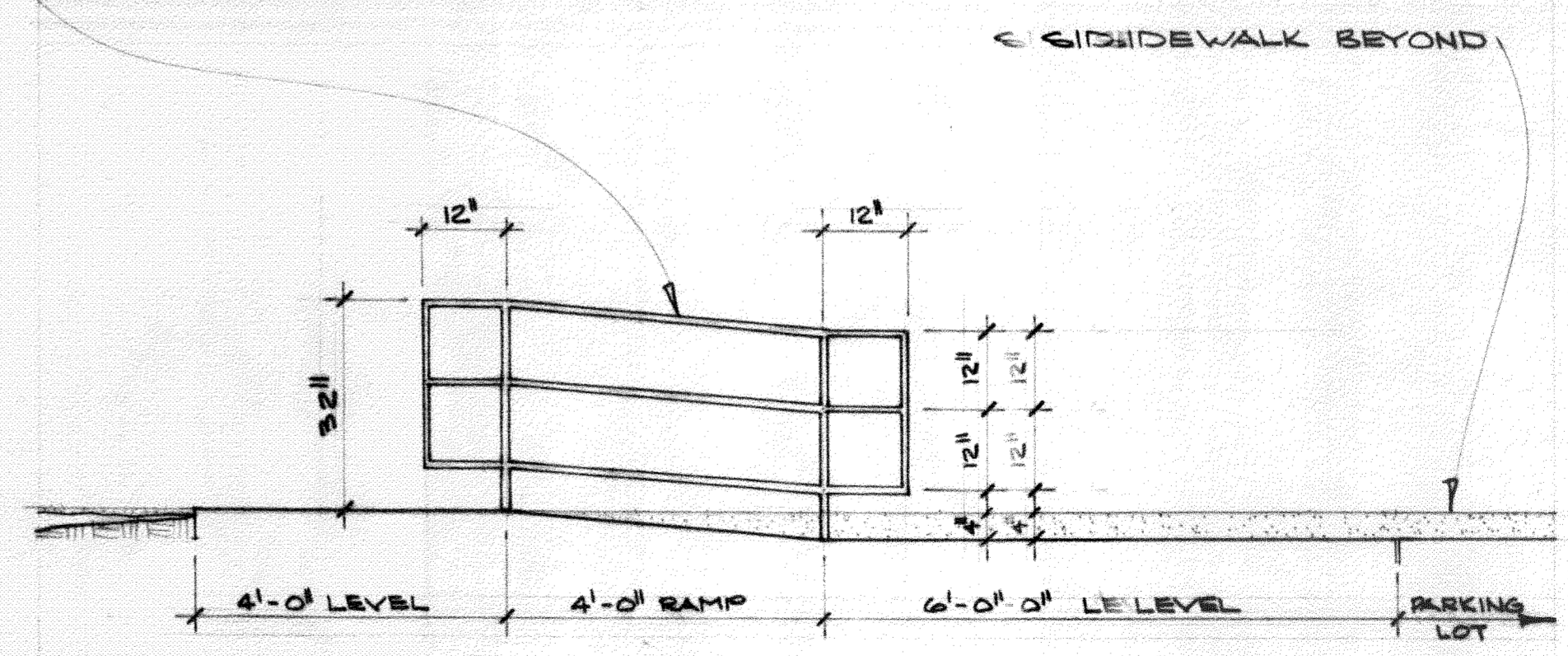


TYP. EXT. WINDOW HEAD DETAIL



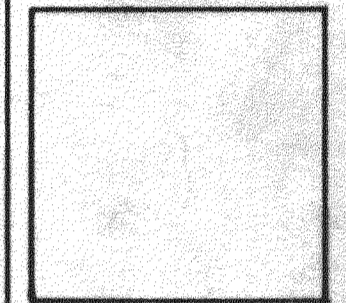
TYP. EXT. WINDOW SILL / SLEEVE DETAIL

1/4" NOMINAL SIZE GALVANIZED IRON PIPE, D PRIMED & PAINTED TO MATCH EXT. BLDG. MET. TRIM, WELDED CONNECTIONS GROUND SMOOTH, SET IN STEEL SLEEVE SET IN CONC.



H/C RAMP / RAIL DETAIL  
ONE HALF INCH EQUALS ONE FOOT

4.19.90



HEAD START CENTER AIRPORT RD. SLIDELL, LA  
DAMMON ENGINEERING, INC. 1095 FLORIDA AVE. SLIDELL, LA 70458