

PLUMBING PLAN

ONE EIGHTH INCH EQUALS ONE FOOT

DIVISION 15 - MECHANICAL

ALL PLUMBING/MECHANICAL WORK AND MATERIAL SHALL BE IN ACCORDANCE WITH THE NATIONAL PLUMBING CODE, THE STANDARD MECHANICAL CODE AND ALL OTHER STATE AND LOCAL CODES AND REGULATIONS. WATER CLOSET (WC-1) 18" HIGH TO BE KOHLER K-4268-ET, WHITE SIPHON JET WITH K-4670-C SOLID PLASTIC SEAT AND SLOAN 100-3 FLUSH VALVE WITH VACUUM BREAKER AND STOP. WATER CLOSET (WC-2) 10" HIGH TO BE KOHLER K-4318-ET, PRIMARY WHITE, VITREOUS CHINA SIPHON JET ELONGATED WATER CLOSET WITH K-4670-C WHITE OPEN FRONT SEAT LESS COVER AND CHECK HINGE. PROVIDE SLOAN 110 FV FLUSH VALVE WITH VACUUM BREAKER AND STOP. SINK (S-1) TO BE JUST MANUFACTURING CO. TYPE 302, 18 GAUGE STAINLESS STEEL, SELF RIMMING, MODEL NO. SL-2019-A-GR WITH 14"X16"X7 1/2" BOWL SIZE. FAUCET TO BE DELTA MODEL 100 HDF WASHERLESS SINGLE HANDLE SWING SPOUT FOR THREE HOLE INSTALLATION. MODIFY ABOVE SINK AS REQUIRED FOR (S-2) FOR SIDE MOUNTED FAUCET AND OPPOSITE SIDE MOUNTED BUBBLER. FAUCET TO BE DELTA MODEL 710 HDF SINGLE HANDLE RIGID GOOSENECK FOR TWO HOLE INSTALLATION. BUBBLER TO BE CENTRAL BRASS 365 - L DECK MOUNTED WITH SELF CLOSING LEVER, AND POLISHED CHROME FINISH. SINK (S-3) TO BE FIAT MSB - 2424, 24"X24"X10" WHITE MOLDED STONE TOP SERVICE BASIN WITH #302 STAINLESS STEEL DRAIN, NO. 1239 - BB ALUMINUM BUMPER GUARD, NO. 830 - AA MIXING FAUCET, NO. 832 - AA HOSE AND HOSE BRACKET, NO. 889 - CC MOP HANGER, AND NO. 833 - AA SILICONE SEALANT. SINK (S-4) TO BE KOHLER PENNINGTON, ENAMELED CAST IRON MODEL NO. K-2191, SELF RIMMING, 20 1/4" X 17 1/4" WITH HOLES ON FOUR INCH CENTERS. FAUCET TO BE DELTA MODEL 500 HDF SINGLE HANDLE WASHERLESS FAUCET WITH CHROME FINISH.

EMC TO BE ELKAY EHF - 8 WALL MOUNTED ELECTRIC WATER COOLER ER FOR H/C USE WITH A CAPACITY OF 8.0 GPH OF 50 DEGREE WATER R AT 90 DEGREE ROOM TEMPERATURE AND INLET WATER TEMPERATURE E OF 80 DEGREE, WITH STAINLESS STEEL FINISH.

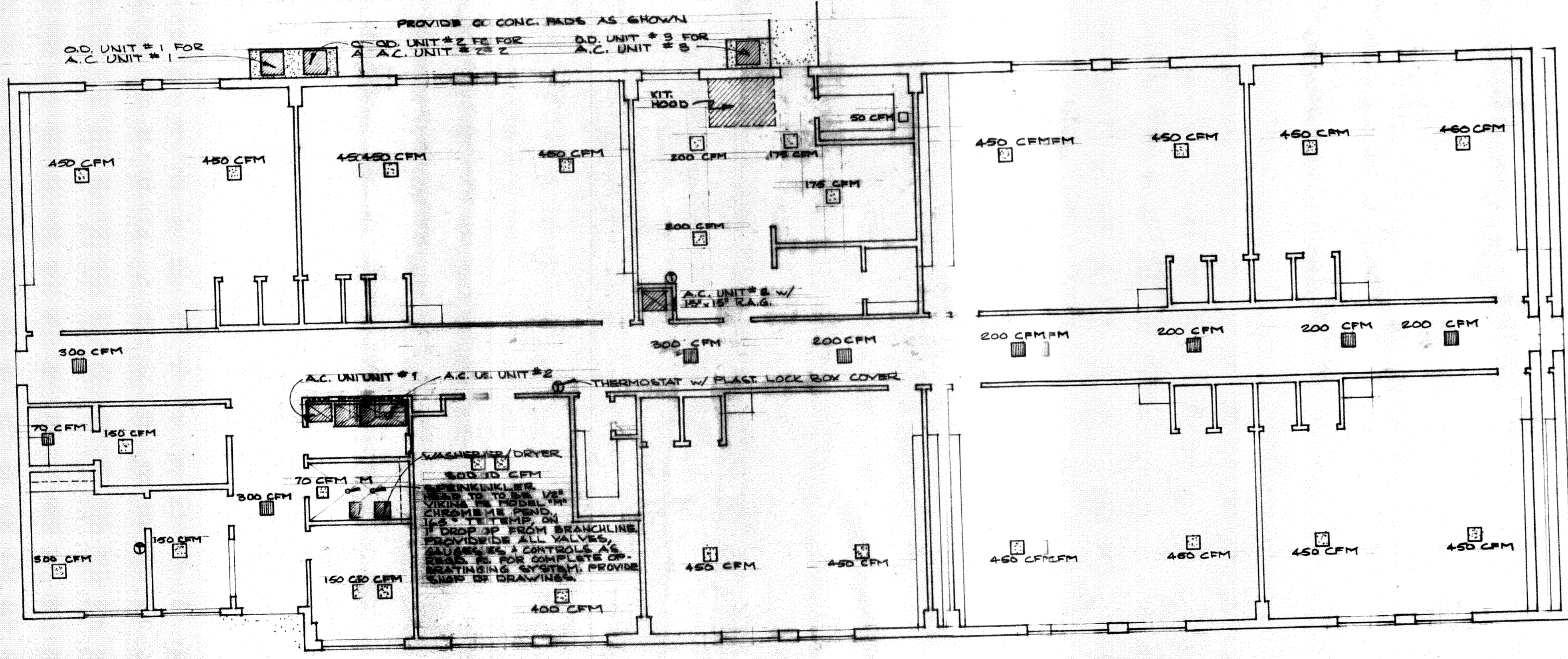
HWH - 1 TO BE RHEEM 75 GAL. PROPANE FIRED, CLASS LINED TANK WITH 2" FIBERGLASS INSULATION, WITH 5 YEAR WARRANTY. EQUIP WITH BUILT-IN PRESSURE REGULATOR, LOW AND HIGH OPERATING THERMOSTAT, TEMPERATURE LIMITING DEVICE DRAIN VALVE, HIGH AND LOW PRESSURE AND LOW WATER PROTECTION DEVICE, AND THERMOSTAT WITH 120 DEGREE TO 180 DEGREE RANGE WITH 100% SAFETY PILOT DESIGNED TO CUT OFF ALL GAS TO HEATER IF PILOT GOES OFF. PROVIDE PRESSURE RELIEF VALVE, DRAIN PIPE, CATCH PAN AND VENT THROUGH ROOF. HEATER TO BE ASME RATED AND HAVE NSF SEAL OF APPROVAL.

HWH - 2 TO BE RHEEM 75 GAL. HIGH RECOVERY UNIT AND OTHERWISE SIMILAR TO HWH-1.

MECHANICAL NOTES:

1. ALL HOSEBISES TO BE NIBCO FREEZE PROOF.
2. ALL PLASTIC PIPE TO BE SOLVENT WELDED PVC SCHED. 40.
3. ALL WATER LINES TO BE TYPE "L" HARD COPPER.
4. INSULATE ALL HOT WATER, REFRIGERANT AND COLD WATER LINES ABOVE CEILING w/ 3/4" THK. ARMA-FLEX OR EQUAL.
5. DISINFECT ALL WATERLINES IN ACCORD W/ STATE OF LOUISIANA SANITARY CODE.
6. PROVIDE SHUT-OFFS AT ALL FIXTURES, ALL TRAPS TO HAVE CLEAN-OUTS.
7. PROVIDE SCHED. 40 STEEL SLEEVES THRU WALLS & WHERE REQD. FOR GAS PIPING BY OTHERS.
8. HWH-2 TO SERVE KIT AREA; HWH-1 TO SERVE ALL OTHER AREAS.
9. PROVIDE RECESSED VALVE BOX/HOSE DRAIN UNIT FOR COMBINATION WASHER/DRYER UNIT TO BE PROVIDED BY OWNER.
10. SEE NOTES REGARDING NATURAL GAS SERVICE, SHT. 12.

4. 19. 90



MECHANICAL PLAN

ONE EIGHTH INCH EQUALS ONE FOOT

H.V.A.C. SCHEDULE									
UNIT #	MIN. CFM	MAX. CFM	BTU/H. COOL	BTU/H. HEAT	GAS	MANUF.	COND. COIL	HEATER	NOTES
A.C. UNITS WITH GAS HEAT									
1	7900	208 3/60	250,000	875,000	NAT.	RHEEM	COND. COIL.	RANAVE200C1 RAGSD200ZK w/GAS FIRED DUCT HEATER	1
2	1975	208 3/60	60,000	125,000	NAT.	RHEEM	COND. FURNACE	RACAC056CAS RCRCAB059S RRRRGA07SACR	1
3	800	208 1/60	24,000	75,000	NAT.	RHEEM	COND. COIL HEATER	RACAC024SAS RCRCAB028S RRRRGA07SACR	1

NOTE 1: PROVIDE STARTER ADAPTER.

H.V.A.C. NOTES:

1. ALL H.V.A.C. WORK TO BE IN ACCORD. W/ NFPA 90A & 101/117-2.
2. H.V.A.C. CONTRACTOR TO BE RESPONSIBLE FOR SIZING & ROUTING OF ALL DUCTWORK.
3. ALL DUCTWORK TO BE 26 GA. GALV. SHT. METAL LINED SD W/ 1" THK. NEOPRENE COATED GLASS FIBER INSUL. INCREASE GAUGE SIZE & OTHERWISE MEET OR EXCEED ALL ASHRAE RECOMMENDATIONS.
4. PROVIDE FUSIBLE LINK DAMPERS WHERE DUCTWORK R. PASSES THRU RATED FIREWALLS AS REQD.
5. INSTALL SMOKE DETECTOR # 136 FIRESTAT AT ALL RETURN AIR DUCTS.
6. DIFFUSERS AT LAY-IN CEILING TO BE 2' X 2' PERFORATED METAL PAINTED WHITE, MODULAR TYPE. OTHER DIFFUSERS TO BE SQUARE OR RECTANGULAR, ALUMINUM, ANEMOSTAT MODEL L DM OR EQUAL.

HEAD START CENTER AIRPORT RD. SLIDELL, LA
 DAMMON ENGINEERING, INC. 1095 FLORIDA AVE. SLIDELL, LA 70458