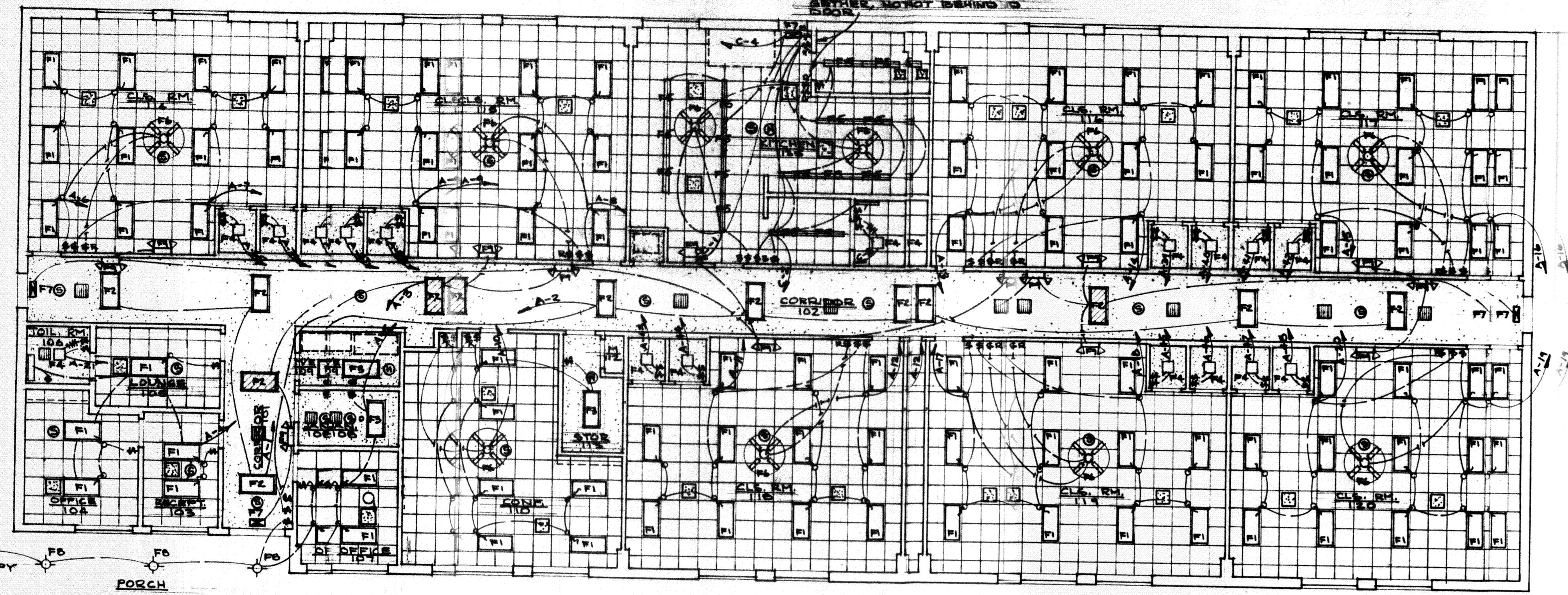


LOCATE SWITCHES TO TO-
BE PLACED, NOT BEING IN
DOOR



REFLECTED CEILING / LIGHTING PLAN

ONE EIGHTH INCH EQUALS ONE FOOT

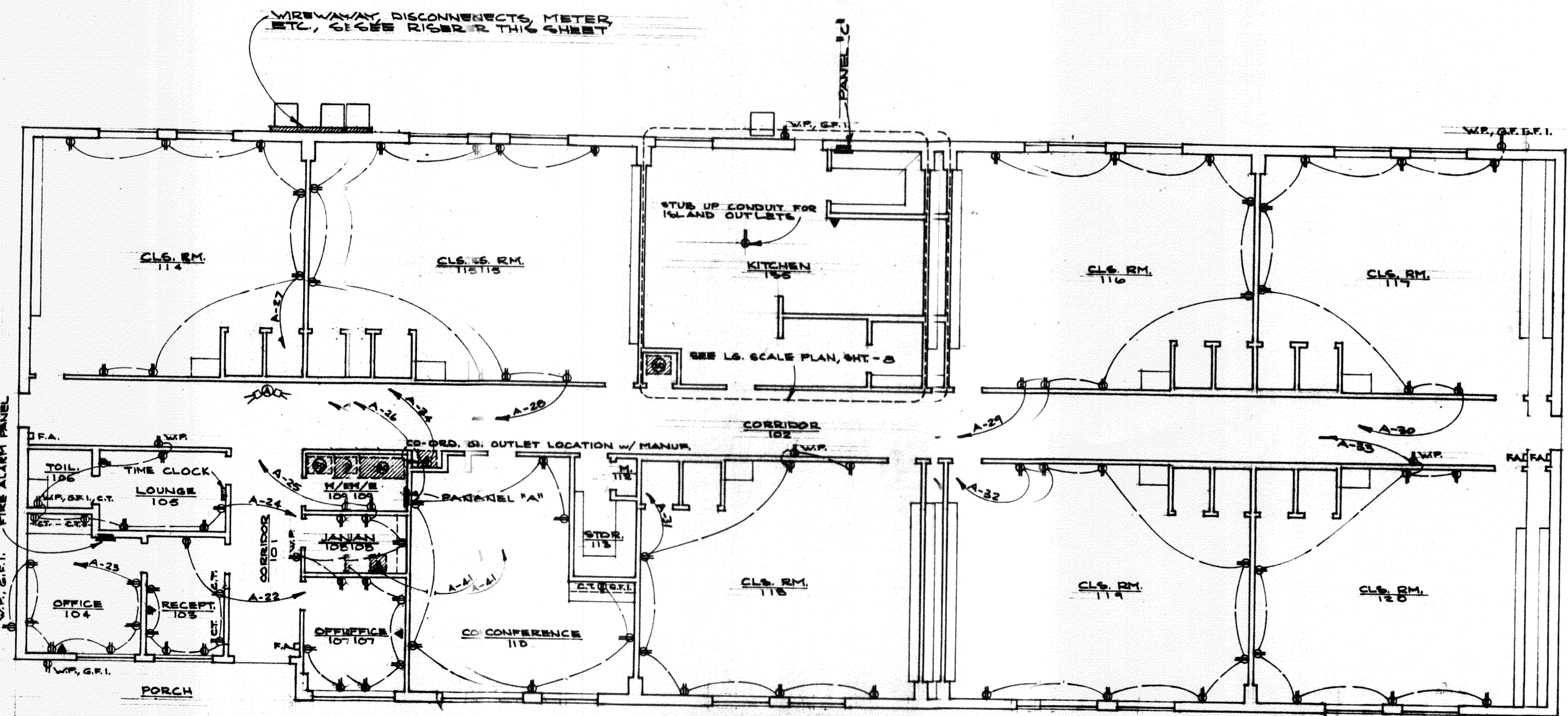
ELECTRICAL FIXTURE SCHEDULE

MARK	SIZE	MOUNT	REMARKS
F1	24 x 48	Ceiling	Lay-in Troffer with Acrylic Lens, 4, 4 - 40-40 watt RS fluorescent bulbs, 120 volt; Midwest, MC, Metalux, or approved equal
F2	16 x 48	Surface	Surface mounted with Acrylic Lens, 4, 4 - 40-40 watt RS fluorescent bulbs, 120 volt; Midwest, MC, Metalux, or approved equal
F3	9 x 48	Surface	Surface mounted with Acrylic Lens, 2, 2 - 40-40 watt RS fluorescent bulbs, 120 volt; Midwest, MC, Metalux, or approved equal
F4		Ceiling	Recess mounted heat, vent, light combination, 120 v. 100 watt incandescent, 1300 watt electric heat; Brown or approved equal
F5	48	Surface	Surface mounted 2 - 40 watt RS fluorescent bulb strip, 120 volt, with Light Guards
F6		Surface	Ceiling mounted fan with 2-speed control, 120 volt Hunter Model NS4 or approved equal
F7			Exit light with flasher, ceiling mounted, 120 volt, Lightalarms Series XE8444
F8		Surface	Surface mounted 120 volt, 100 watt incandescent bulb with vandalproof lens
F9		Wall	Wall mounted 6 volt battery operated emergency lighting, dual head, 120 volt; Lightalarms Series Model DS

FIXTURE NOTES:

1. INSTALL TIME CLOCK TO BE PROVIDED BY OWNER.
2. CEILING FANS TO BE PROVIDED BY OWNER.
3. PROTECTIVE OUTLET COVERS TO BE PROVIDED BY OWNER.
4. RESTROOM OVER-MIRROR FIXTURE TO BE SELECTED BY OWNER, ALLOW \$500 EA.
5. PROVIDE 12 GA. HANGER WIRE FROM EA. CORNER OF ALL LAY-IN LIGHT FIXT. TO STRUCTURE.

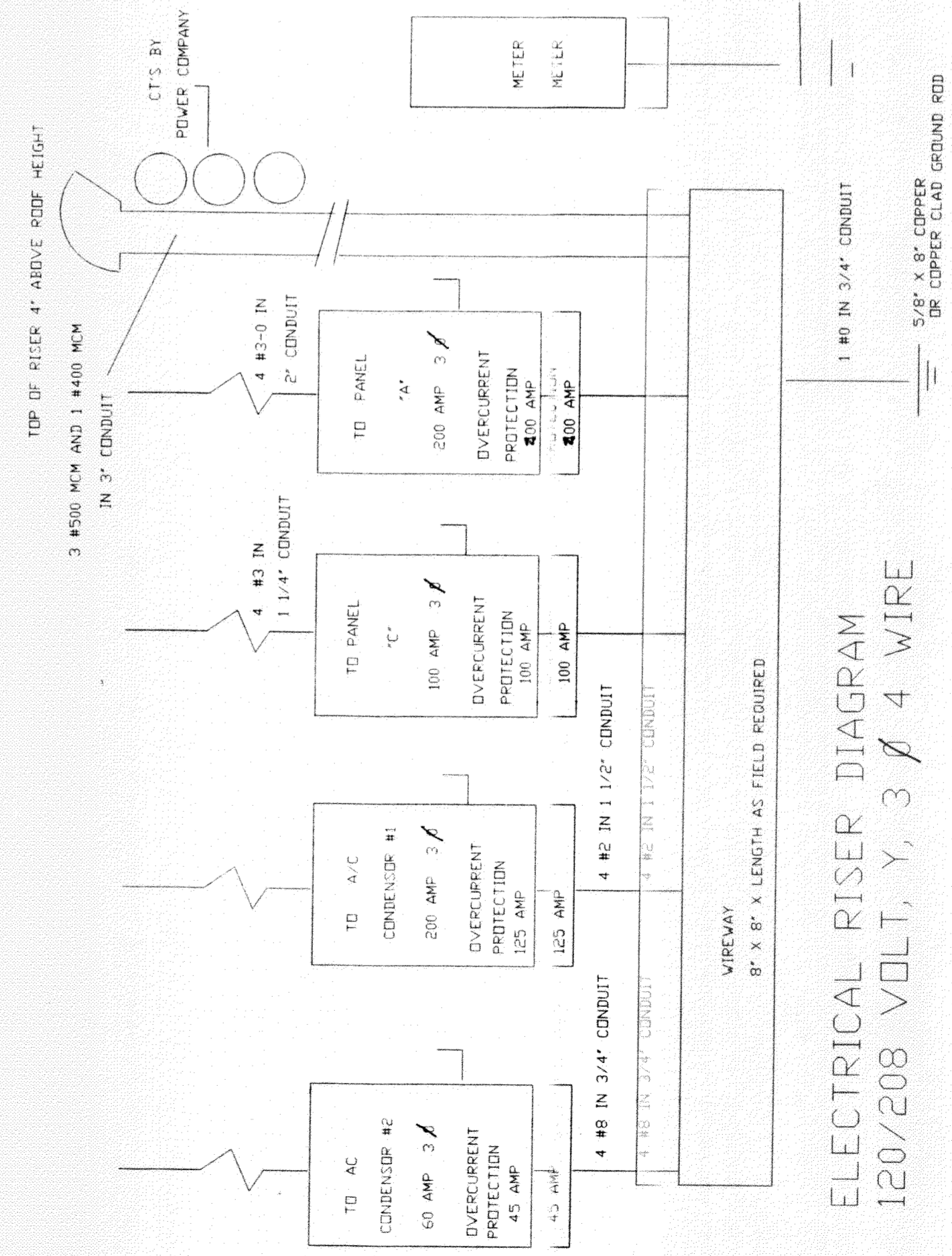
WIRINGWAY, DISCONNECTS, METER
ETC., SEE RISER R THIS SHEET



ELECTRICAL / COULTEIT PLAN

ONE EIGHTH INCH EQUALS ONE FOOT

- SYMBOLS:
- ⊙ SMOKE DETECTOR
 - ⊕ HEAT DETECTOR
 - ⊙ SMOKE DETECTOR, DUCT MOUNTED
 - ⊙⊙ ALARM HORN AND FLASHER
 - ⊠ F.A. FIRE ALARM MANUAL PULL STATION
 - NIGHT LIGHT



ELECTRICAL RISER DIAGRAM
120/208 VOLT, Y, 3 Ø 4 WIRE

HEAD START CENTER AIRPORT RD. SLIDELL, LA
DAMMON ENGINEERING, INC. 1095 FLORIDA AVE. SLIDELL, LA 70458