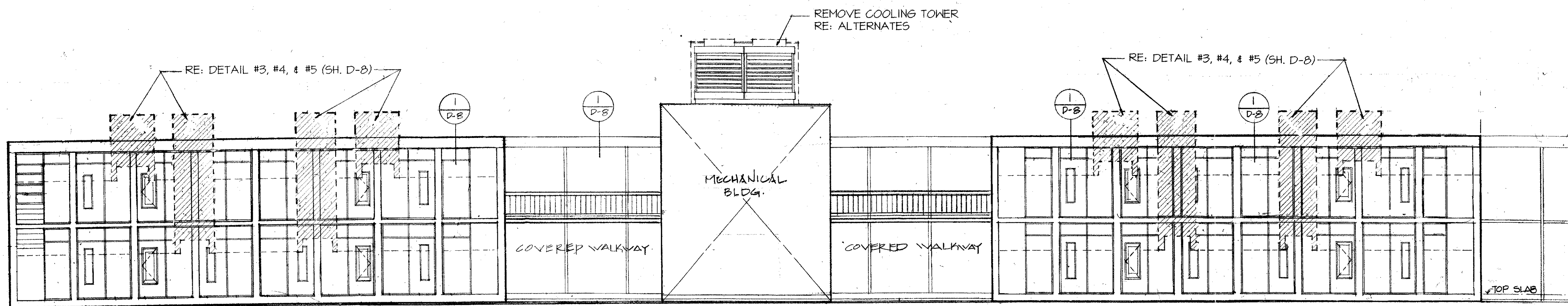


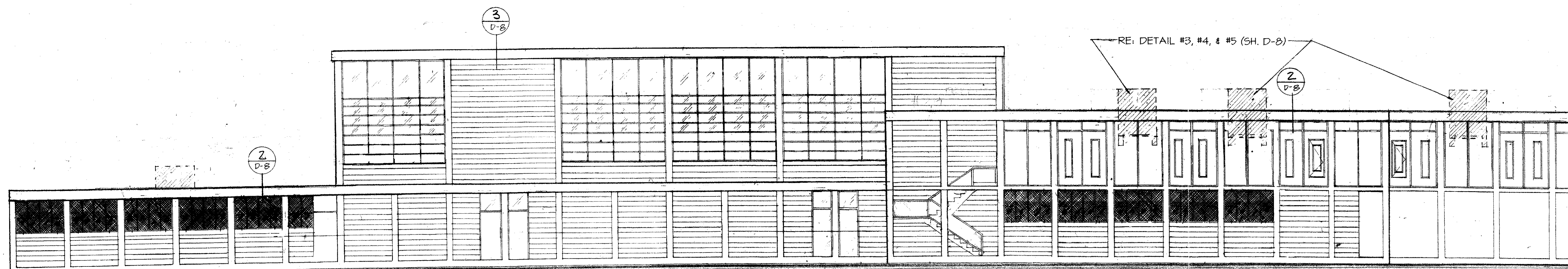
7A ELEVATION "BLDG A" FRERET ST.
D-1 | D-3 1/8" = 1'-0"

NOTE: ELEVATION 7B IS SIMILAR BUT OPPOSITE HAND (w/o MECH. BLDG.)
D-1 | D-3

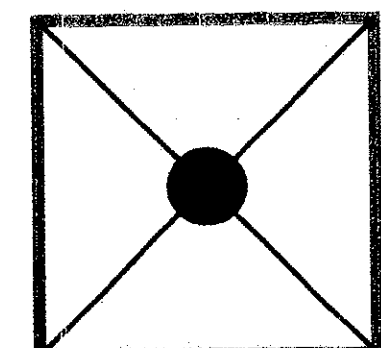


6A ELEVATION "BLDG A" SOUTH ROBERTSON ST.
D-1 | D-3 1/8" = 1'-0"

NOTE: ELEVATION 6B IS SIMILAR BUT OPPOSITE HAND (MINUS MECHANICAL BLDG.)
D-1 | D-3



5 ELEVATION "BLDG F" FRERET STREET
D-1 | D-3 1/8" = 1'-0"



CONSULTANT
BYRON J. STEWART & ASSOC.
ARCHITECTS & PLANNERS
2300 MARENGO ST.
NEW ORLEANS, LA 70115
(504) 897-5339

CLIENT
NEW ORLEANS PARISH
SCHOOL BOARD
4300 ALMONASTER AVE.
NEW ORLEANS, LA

PROJECT
CARTER G. WOODSON JUN. HIGH SCHOOL
RE-ROOFING & MECHANICAL REPAIRS
F.D.P. # 92034

JOB NUMBER: 9602
DATE: 4-21-97
DRAWN BY:
CHECKED BY: B.J.S.

REVISIONS		
NO.	DATE	REVISION

SHEET
D-3
OF SHEETS