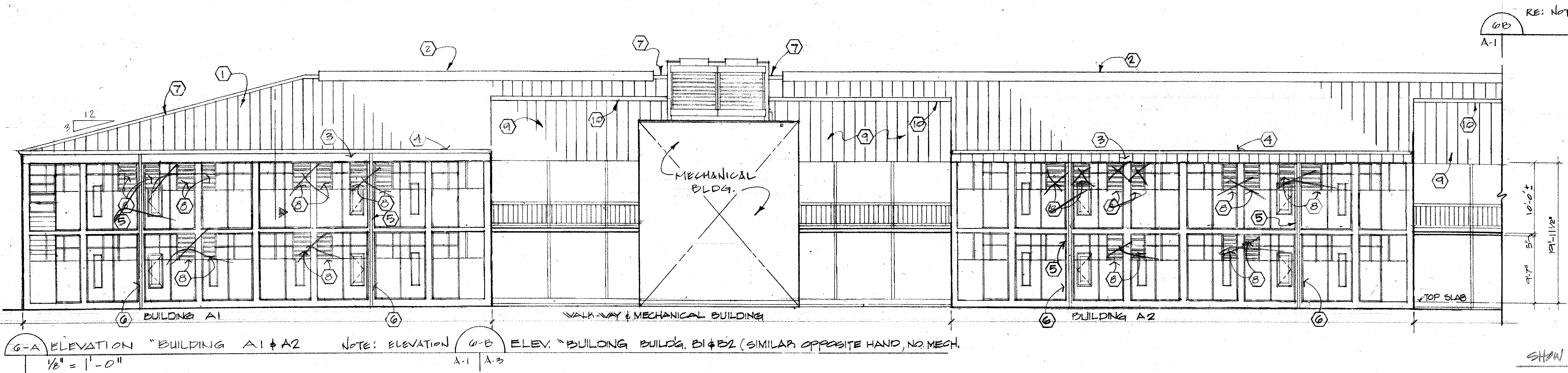


7-A ELEVATION "BUILDING A1 & A2"
A-1 A-3 1/8" = 1'-0"

7-B ELEVATION "BLDG. B-1 & B-2 SIMILAR OPPOSITE HAND"
A1--



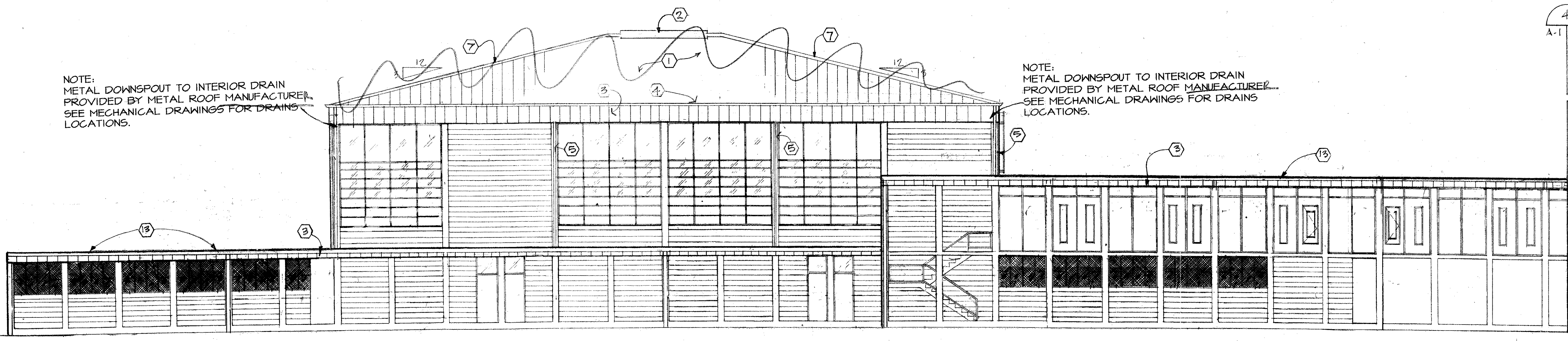
6-A ELEVATION "BUILDING A1 & A2"
1/8" = 1'-0"

NOTE: ELEVATION 6-B ELEV. "BUILDING BLDG. B1 & B2 (SIMILAR OPPOSITE HAND, NO MECH.)"
A-1 A-3

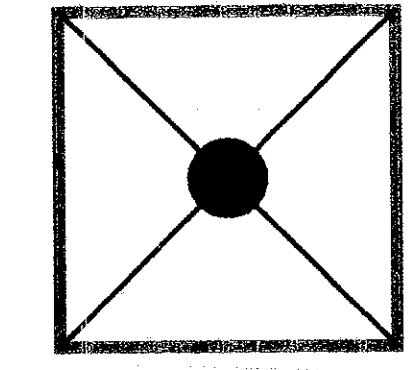
SHOW KEYNOTES

NOTE:
METAL DOWNSPOUT TO INTERIOR DRAIN
PROVIDED BY METAL ROOF MANUFACTURER.
SEE MECHANICAL DRAWINGS FOR DRAIN
LOCATIONS.

NOTE:
METAL DOWNSPOUT TO INTERIOR DRAIN
PROVIDED BY METAL ROOF MANUFACTURER.
SEE MECHANICAL DRAWINGS FOR DRAIN
LOCATIONS.



5 ELEVATION "BUILDING F"
A-3 1/8" = 1'-0"



CONSULTANT
BYRON J. STEWART & ASSOC.
ARCHITECTS & PLANNERS
2900 MARENGO ST.
NEW ORLEANS, LA 70115
(504) 897-5339

CLIENT
NEW ORLEANS PARISH
SCHOOL BOARD
4300 ALMONASTER AVE
NEW ORLEANS, LA

PROJECT
CARTER G. WOODSON JUN. HIGH SCHOOL
RE-ROOFING & MECHANICAL REPAIRS
F.D.P. # 92034

JOB NUMBER: 9602
DATE: 4-21-97
DRAWN BY:
CHECKED BY: B.J.S.

REVISIONS		
NO.	DATE	REVISION

SHEET
A-3
OF 13 SHEETS