

CONSULTANT
 BYRON J. STEWART & ASSOC.
 ARCHITECTS & PLANNERS
 2300 MARENGO ST.
 NEW ORLEANS, LA. 70115
 (504) 897-5339

CLIENT
 NEW ORLEANS PARISH
 SCHOOL BOARD
 4300 ALMONASTER AVE.
 NEW ORLEANS, LA.

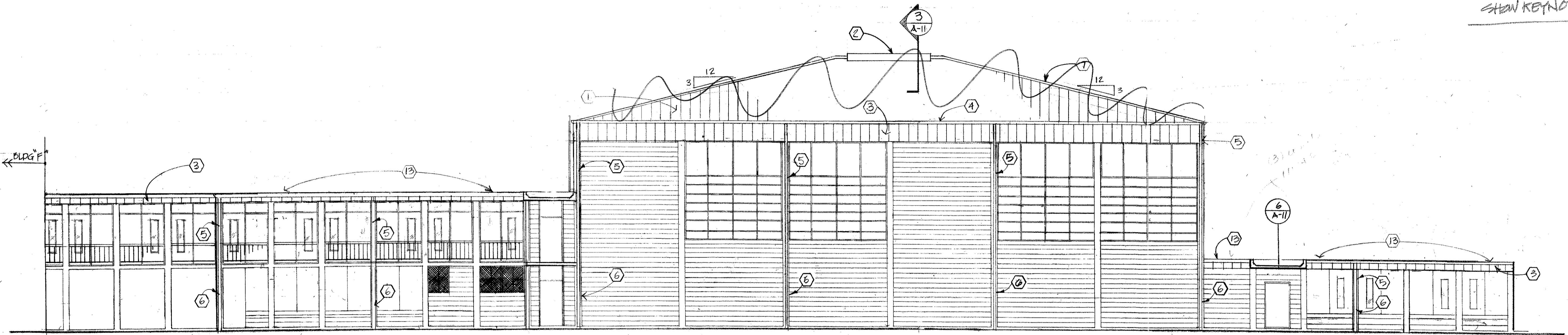
PROJECT
 CARTER G. WOODSON JUN. HIGH SCHOOL
 RE-ROOFING & MECHANICAL REPAIRS
 F.D.P. # 92034

JOB NUMBER: 9602
 DATE: 4-21-97
 DRAWN BY:
 CHECKED BY: B.J.S.

REVISIONS		
NO.	DATE	REVISION

SHEET
 A-4
 OF 13 SHEETS

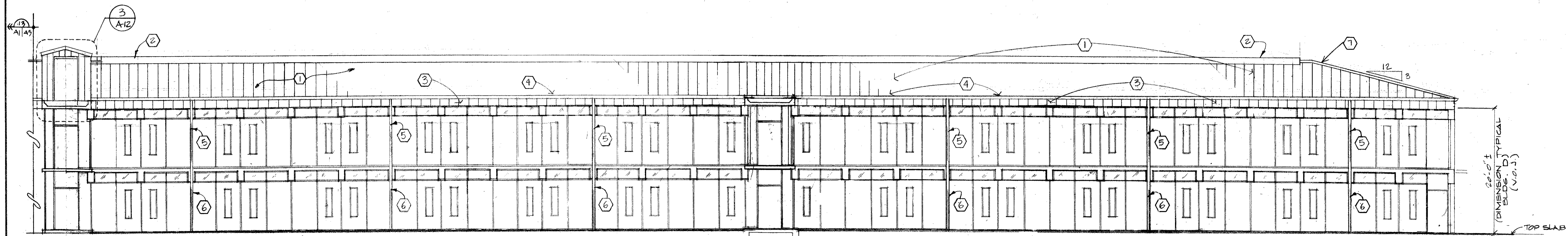
SHOW KEYNOTES



1 ELEVATION "BLDG F"
 A-1/A-4 1/8" = 1'-0"

N FACE

Height 32'
 width 99'



8 ELEVATION "BLDG D"
 A-1/A-4 1/8" = 1'-0"

20'-0" TYPICAL
 (BLDG. D)
 (N.O.S.)
 TOP SLAB