

CONSULTANT
 BYRON J. STEWART & ASSOC.
 ARCHITECTS & PLANNERS
 2500 MARENGO ST.
 NEW ORLEANS, LA 70115
 (504) 897-5539

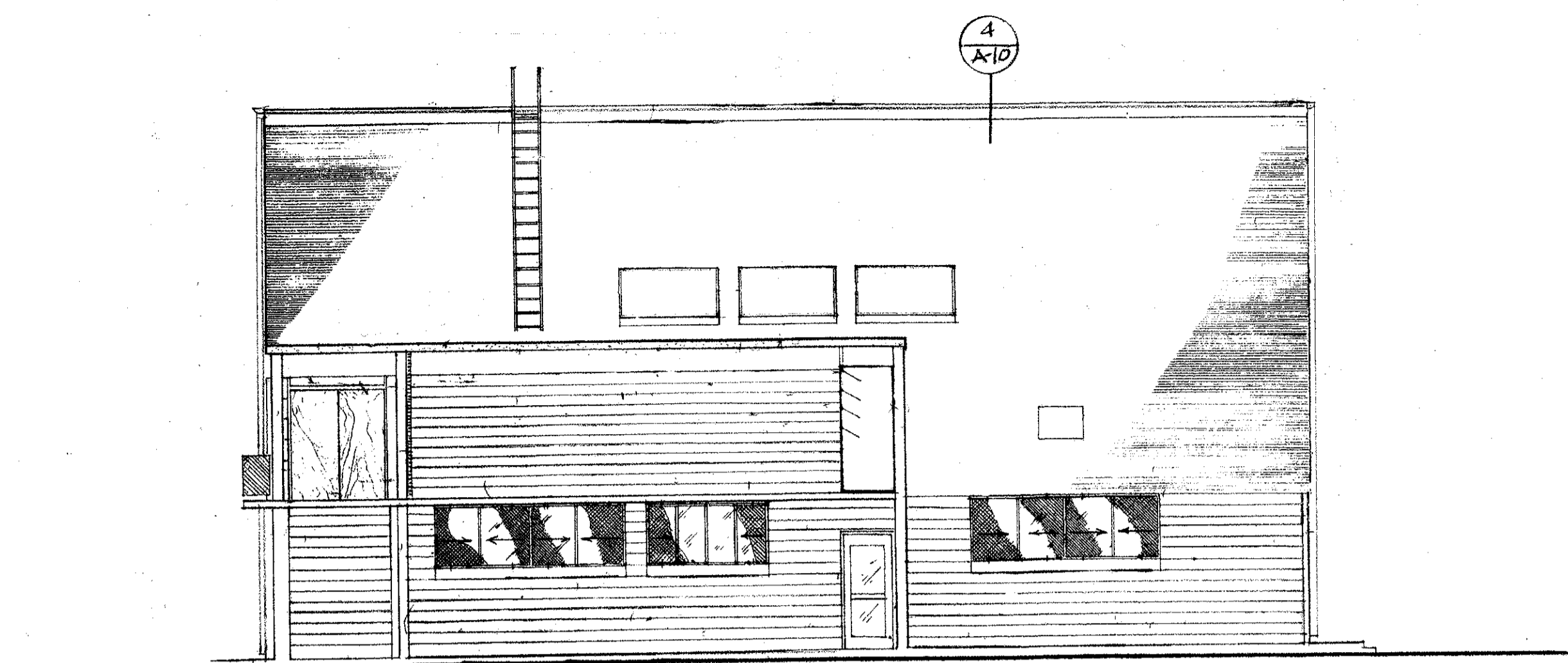
CLIENT
 NEW ORLEANS PARISH
 SCHOOL BOARD
 4300 ALMONASTER AVE
 NEW ORLEANS, LA

PROJECT
 CARTER G. WOODSON JUN. HIGH SCHOOL
 RE-ROOFING & MECHANICAL REPAIRS

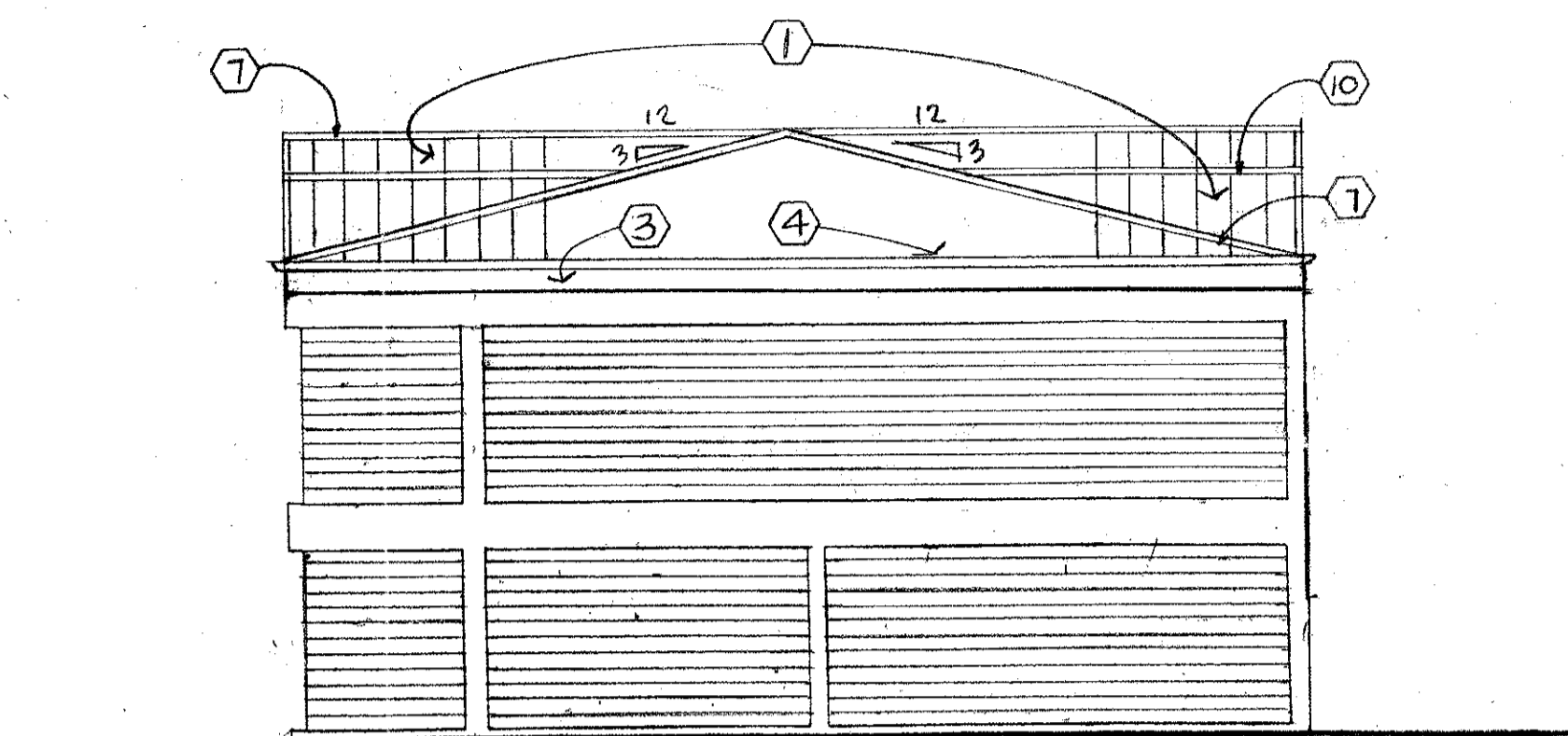
JOB NUMBER:
 9602
 DATE: 4-21-97
 DRAWN BY:
 CHECKED BY:
 B.J.S.

REVISIONS		
NO.	DATE	REVISION

SHEET
A-6
 OF SHEETS



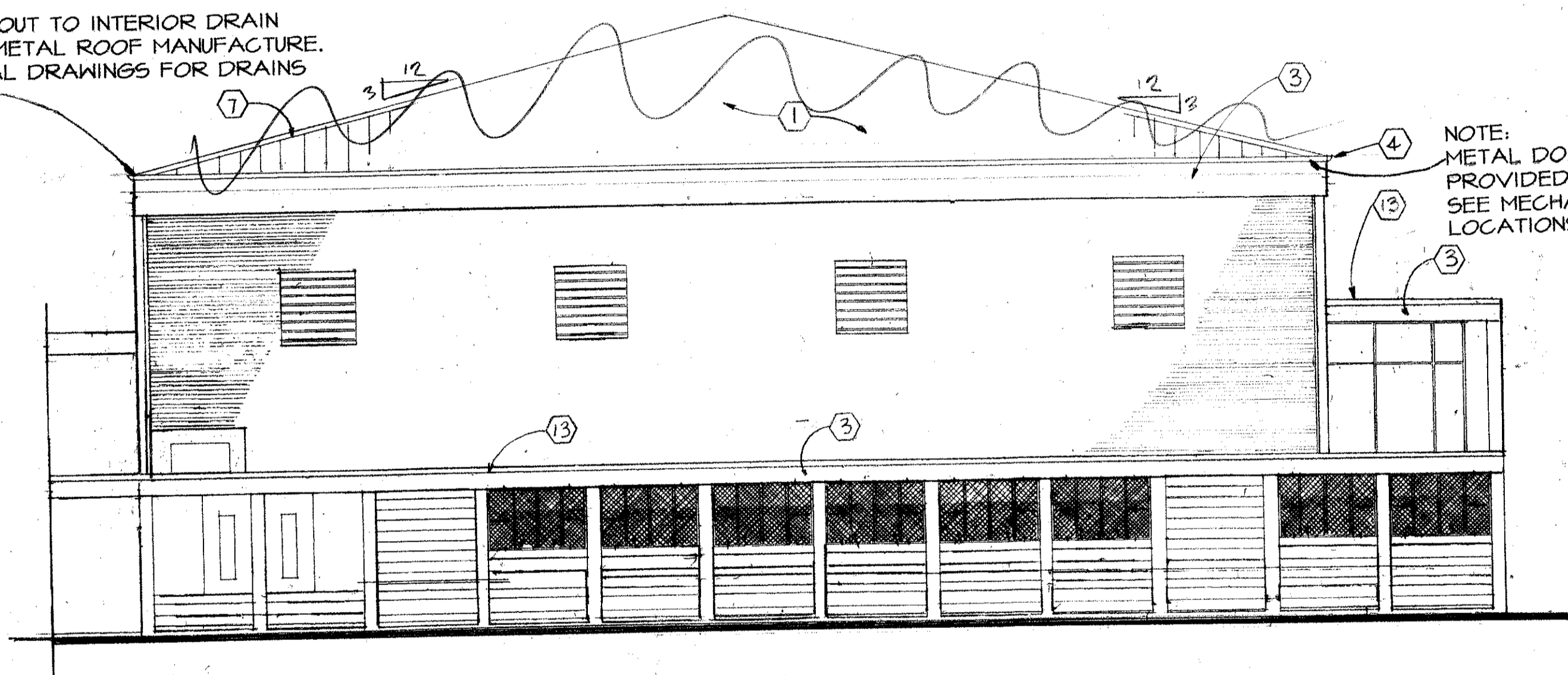
18 ELEVATION "BLDG E"
 A-6 1/8" = 1'-0"



19 ELEVATION "BLDG D"
 A-6 1/8" = 1'-0"

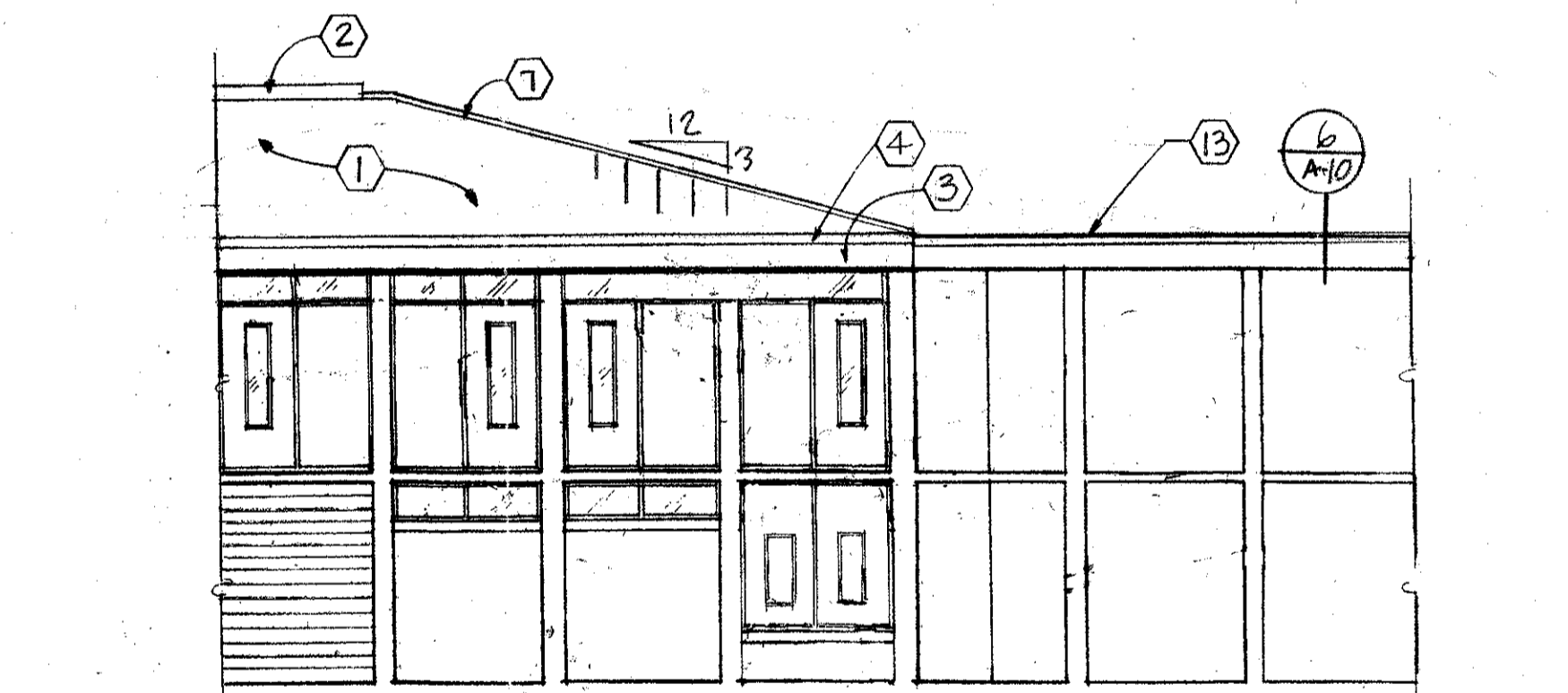
SHOW KEYNOTES

NOTE:
 METAL DOWNSPOUT TO INTERIOR DRAIN
 PROVIDED BY METAL ROOF MANUFACTURE.
 SEE MECHANICAL DRAWINGS FOR DRAINS
 LOCATIONS.

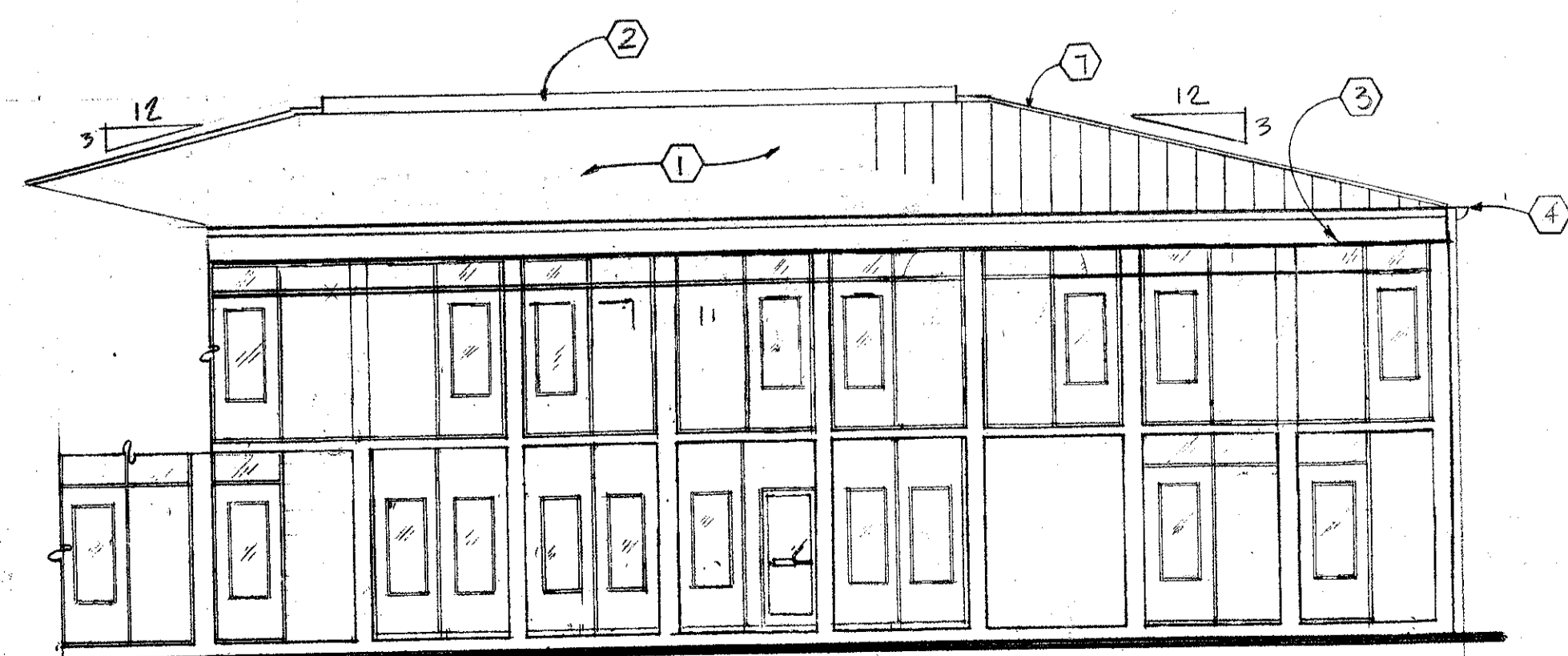


16 ELEVATION "BLDG F"
 A-6 1/8" = 1'-0"

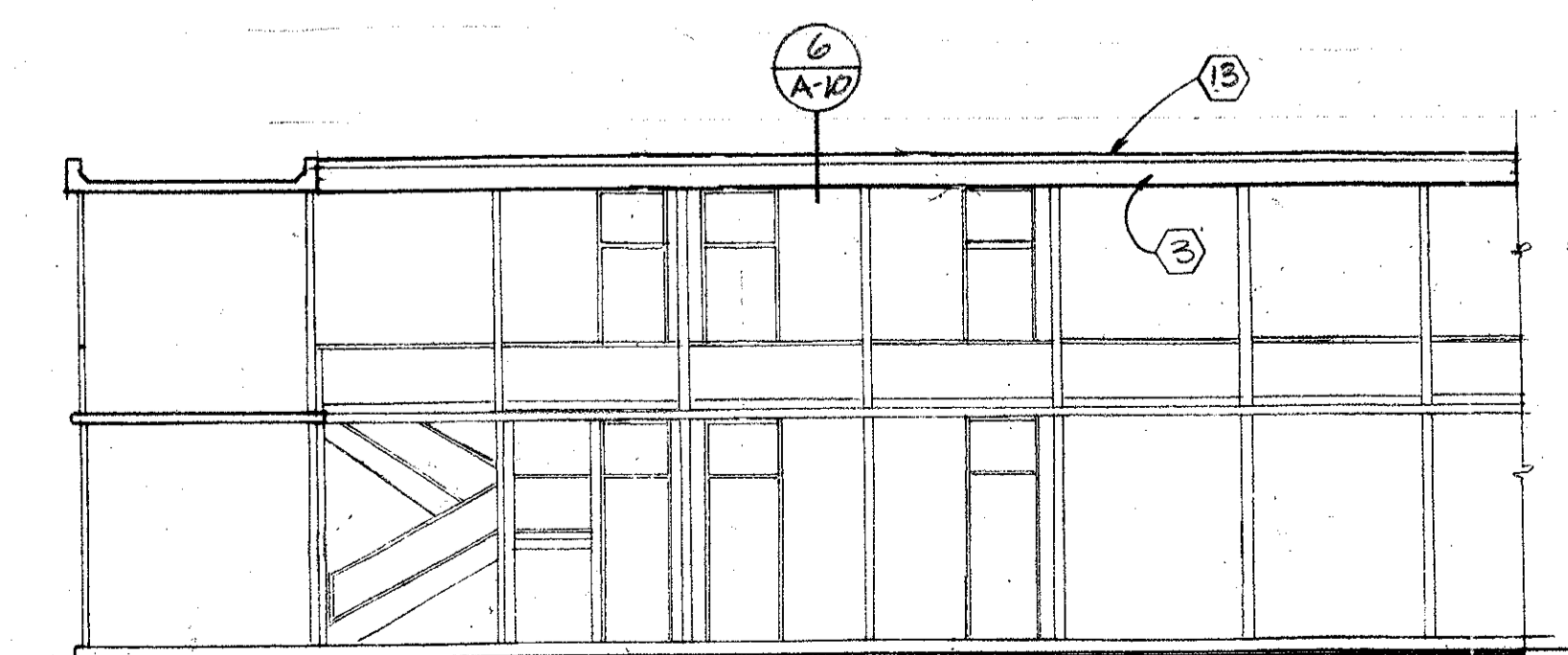
NOTE:
 METAL DOWNSPOUT TO INTERIOR DRAIN
 PROVIDED BY METAL ROOF MANUFACTURE.
 SEE MECHANICAL DRAWINGS FOR DRAINS
 LOCATIONS.



17 ELEVATION "BLDG G2"
 A-6 1/8" = 1'-0"



14 ELEVATION "BUILDING C"
 A-6 1/8" = 1'-0"



15 ELEVATION "BETWEEN BUILDING B1&B2/A1&A2 SIMILAR"
 A-6 1/8" = 1'-0"