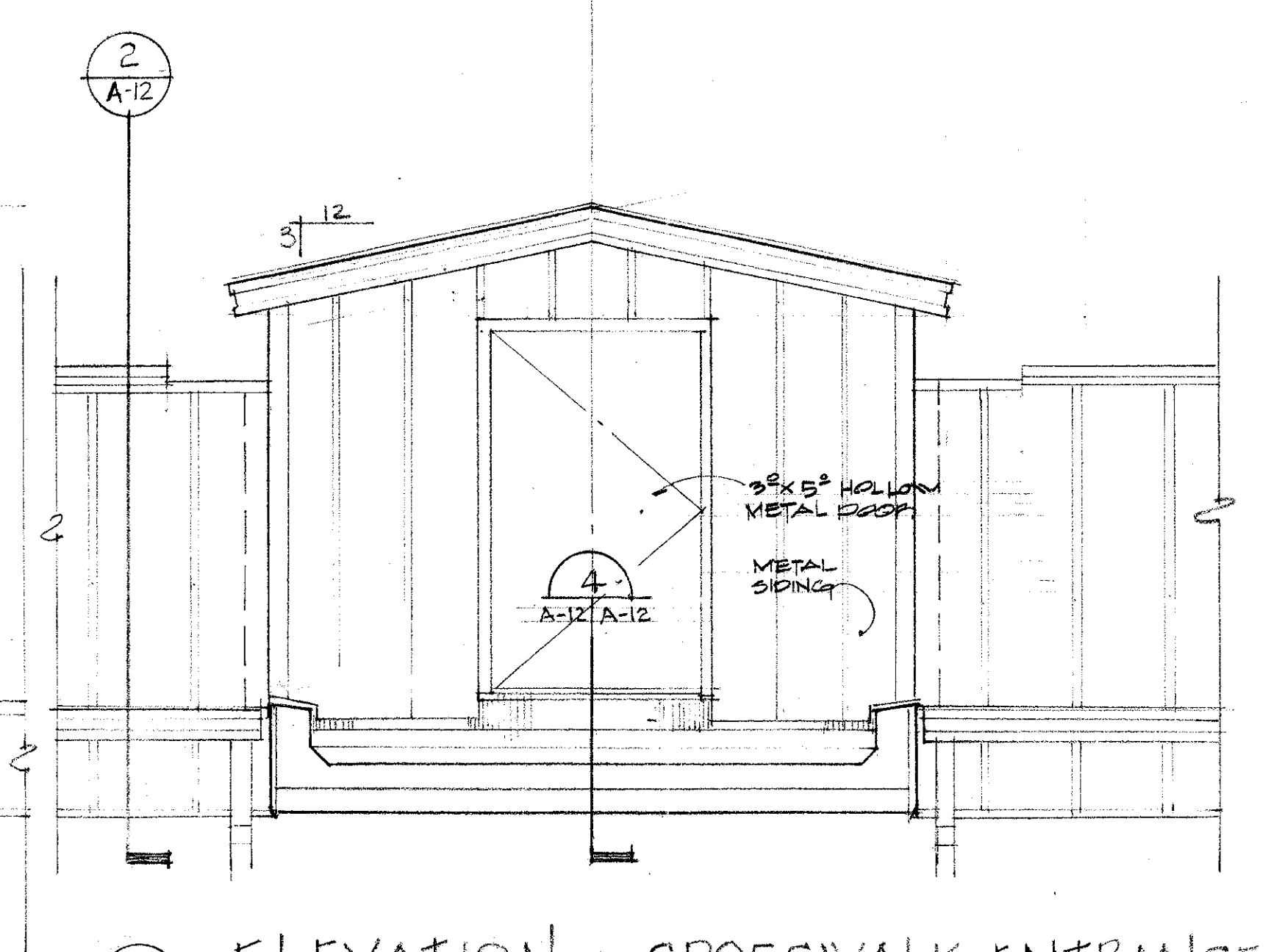
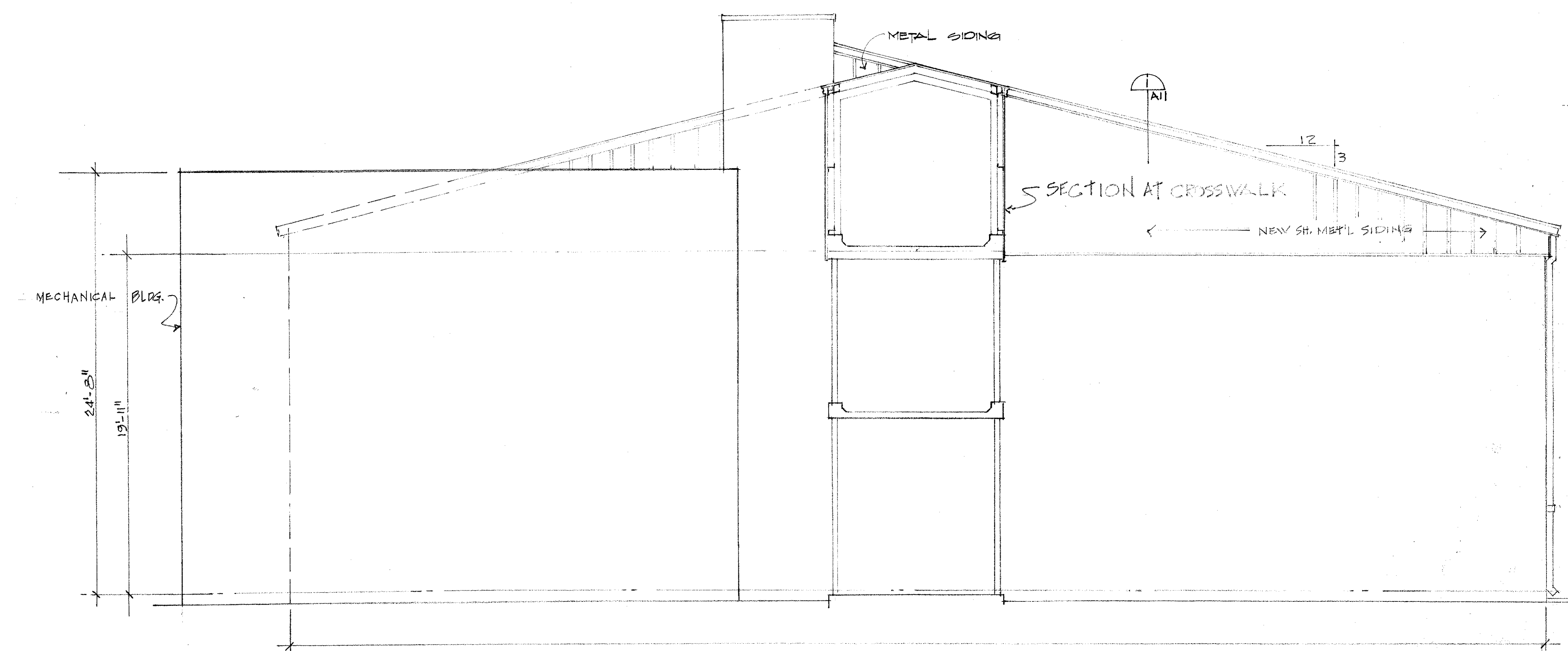


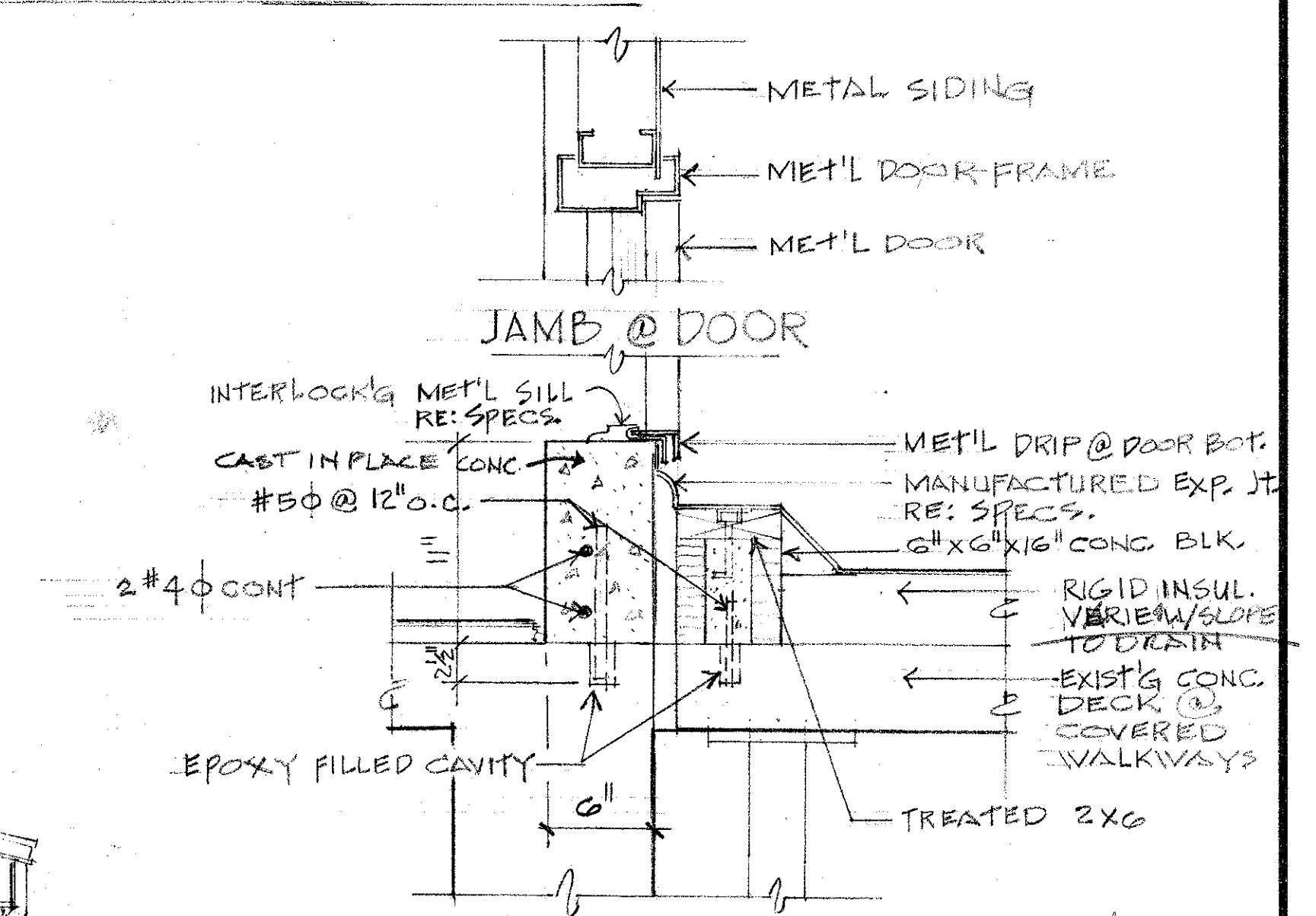
2 SECTION @ BLD'G "D" & CROSSWALK ENTRANCE
A-12 1/2" = 1'-0"



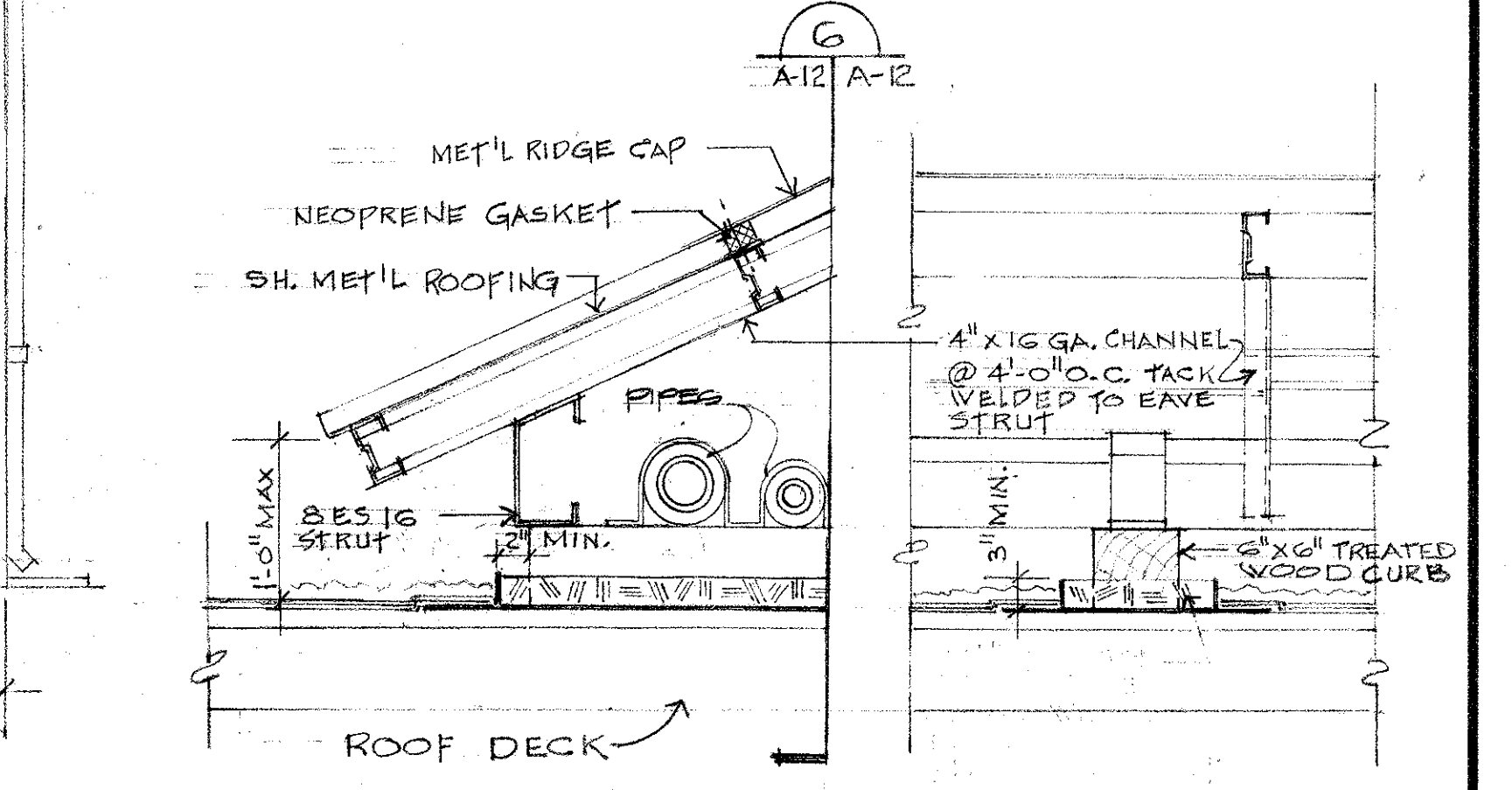
3 ELEVATION @ CROSSWALK ENTRANCE
A-12/A-12 1/2" = 1'-0"



1 ELEVATION MECHANICAL EQUIPMENT & BUILDING "A1"
A-12 1/4" = 1'-0"

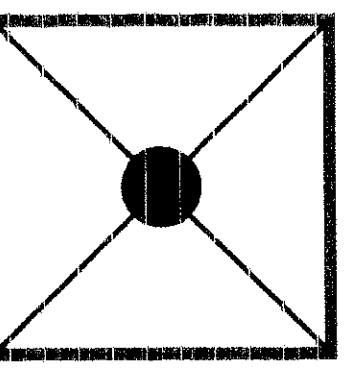


4 SECTION @ CROSSWALK ENTRANCE
A-12/A-12 1/2" = 1'-0"
MODIFIED BITUMINOUS ROOF SYSTEM FLASHING AS PER MANUFACTURE PRODUCTS & INSTALLATION SPEC.



5 PIPE COVER DETAIL
A-12 1" = 1'-0"
PROVIDE NEW MODIFIED BITUMINOUS ROOF SYSTEM FLASHING @ PIPE SUPPORTS ON ROOF AS PER MANUFACTURE PRODUCTS AND INSTALLATION SPECIFICATIONS. (SEE A-9 & 2/ME-4)

6 SECTION
A-12/A-12 1" = 1'-0"



CONSULTANT
BYRON J. STEWART & ASSOC.
ARCHITECTS & PLANNERS
2300 MARENGO ST.
NEW ORLEANS, LA 70115
(504) 897-5339

CLIENT
NEW ORLEANS PARISH
SCHOOL BOARD
4300 ALMONASTER AVE
NEW ORLEANS, LA

PROJECT
CARTER G. WOODSON JUN. HIGH SCHOOL
RE-ROOFING & MECHANICAL REPAIRS
F.D.P. # 92034

JOB NUMBER: 9602
DATE: 4-21-97
DRAWN BY:
CHECKED BY: B.J.S.

REVISIONS		
NO.	DATE	REVISION

SHEET
A-12
OF SHEETS