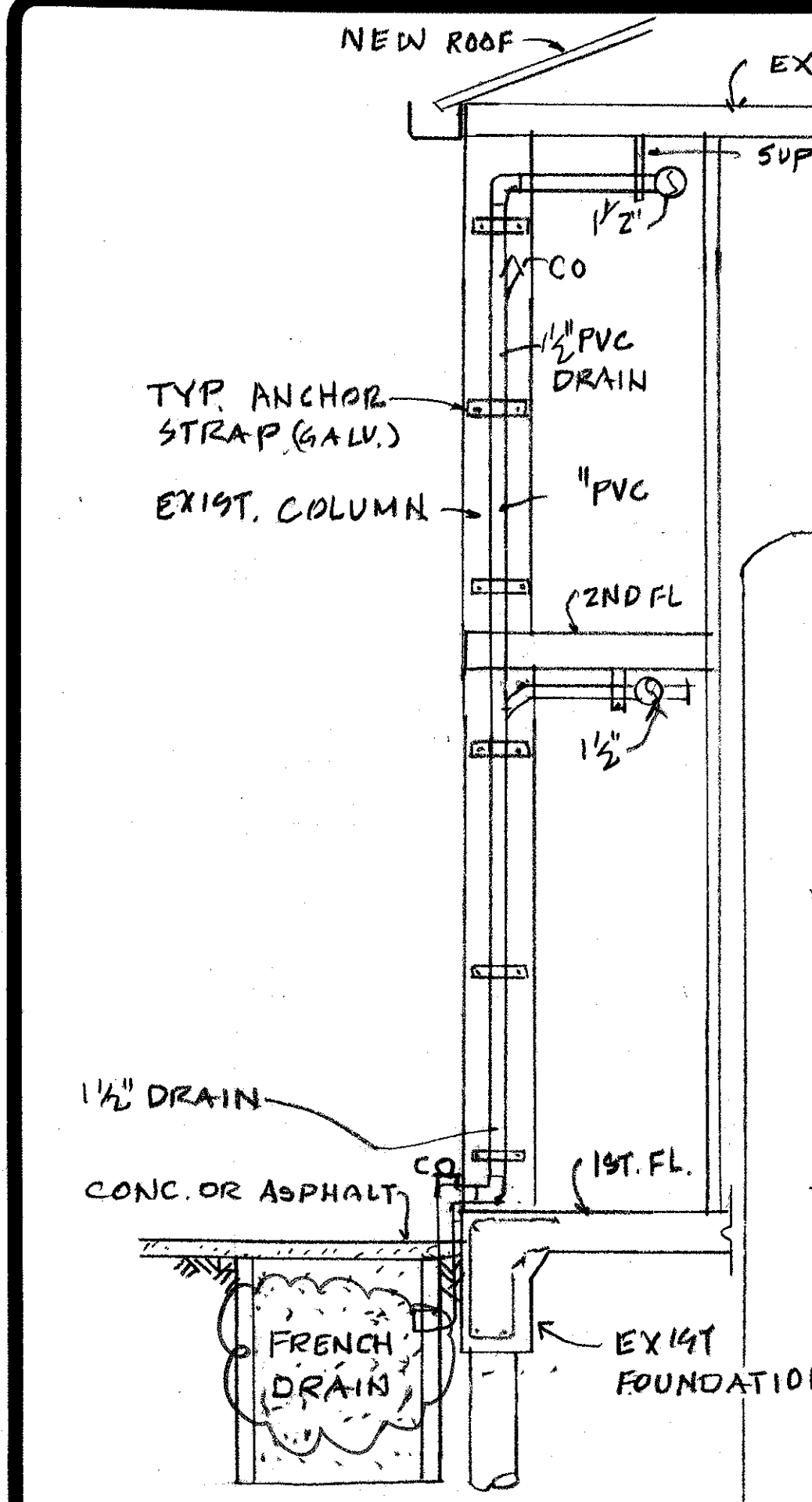


**KEY NOTE**

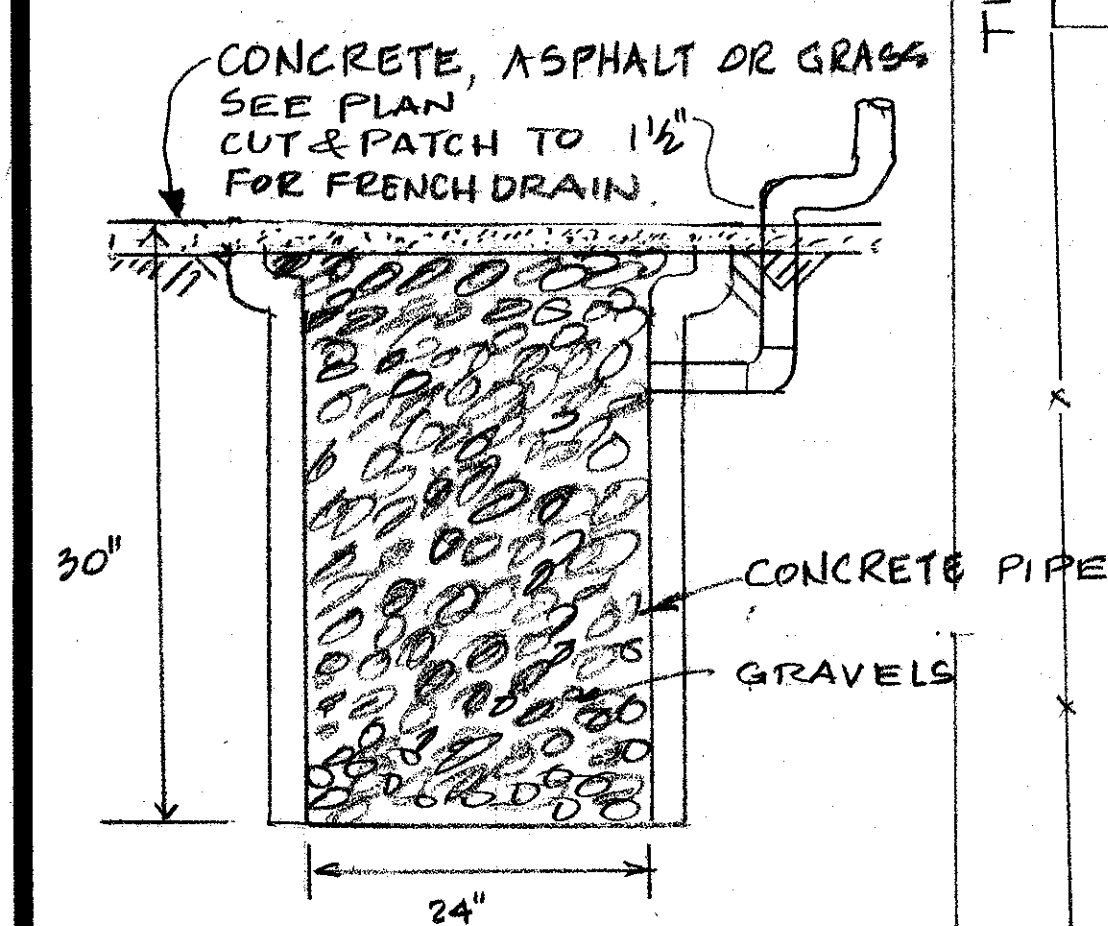
① NEW FRENCH DRAIN FOR CONDENSATE DRAIN OF A/C. SEE DETAIL - 2/ME-3 AND 3/ME-3. EXACT LOCATIONS TO BE FIELD DETERMINED.

**M-K ENGINEERING, INC.**  
CONSULTING ENGINEERS  
HVAC-PLUMBING-FIRE PROTECTION-ELECTRICAL  
4323 DIVISION STREET, SUITE 211  
METAIRIE, LOUISIANA 70002  
TEL (504)887-2376, FAX(504) 887-2302

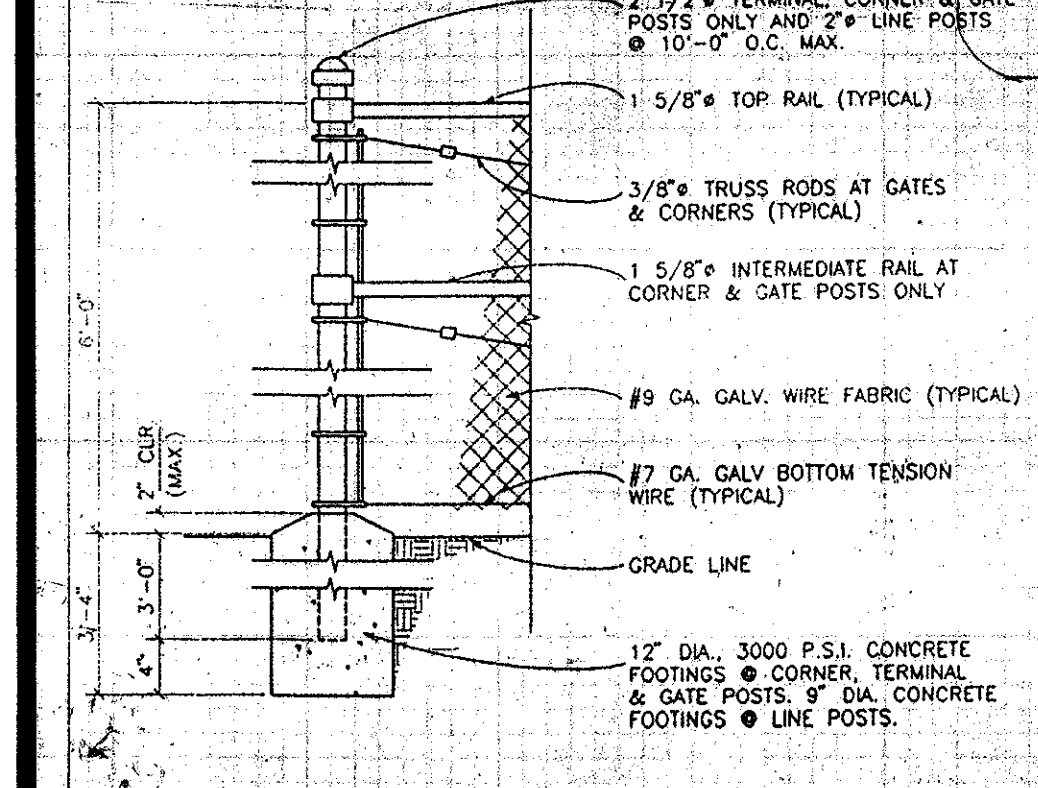
REVISIONS	BY



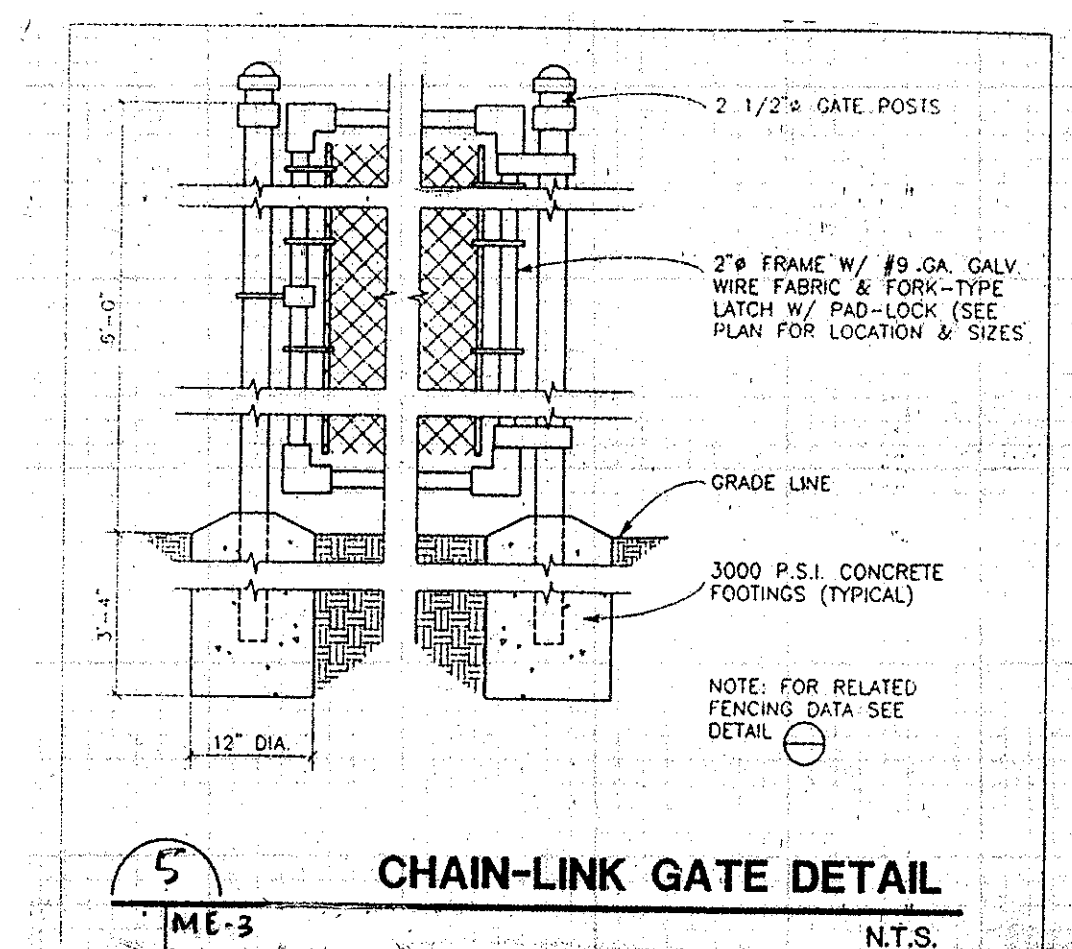
② TYPICAL DRAIN DETAIL  
ME-3 N.T.S.



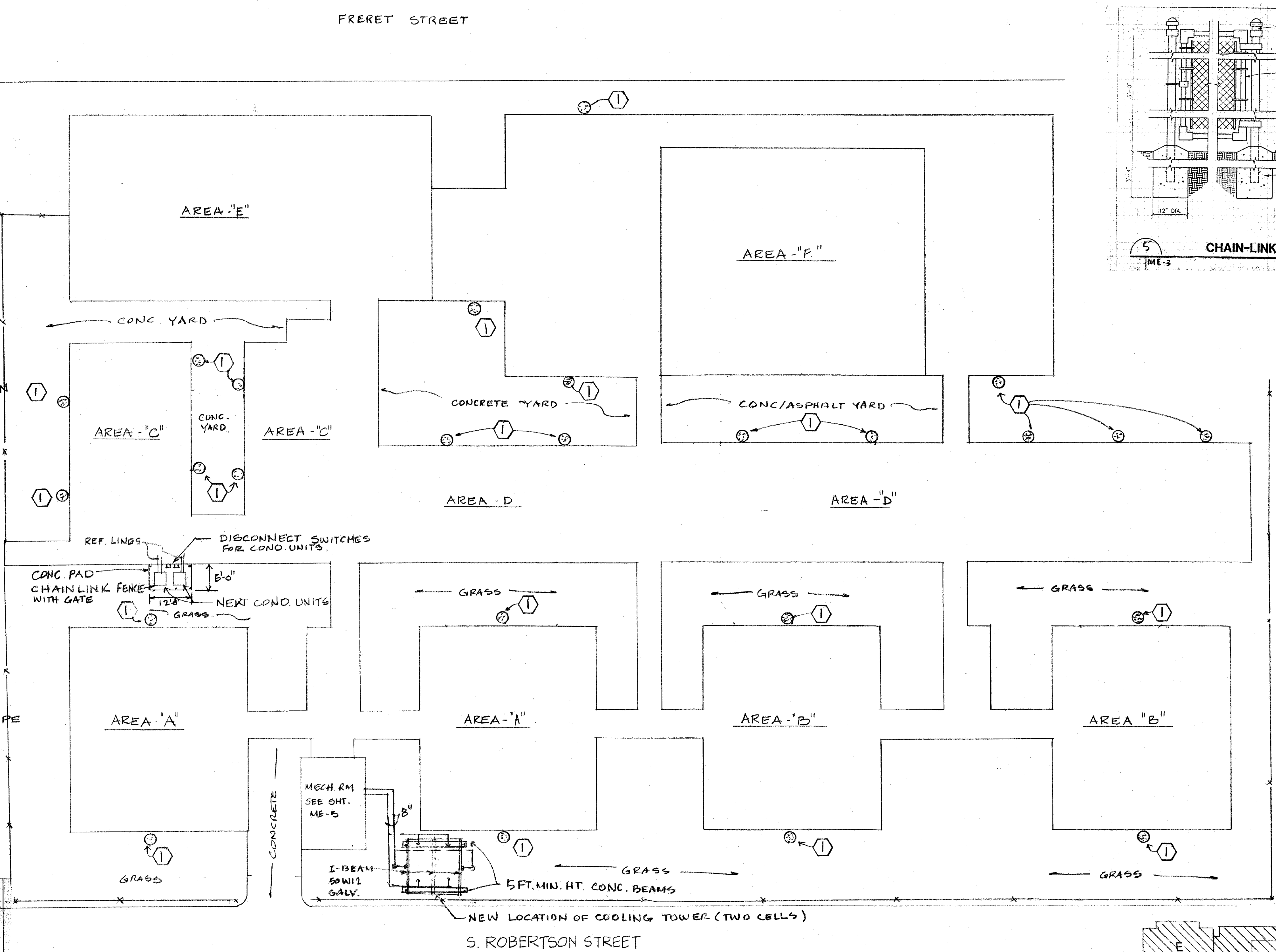
③ TYPICAL FRENCH DRAIN DETAIL  
ME-3 N.T.S.



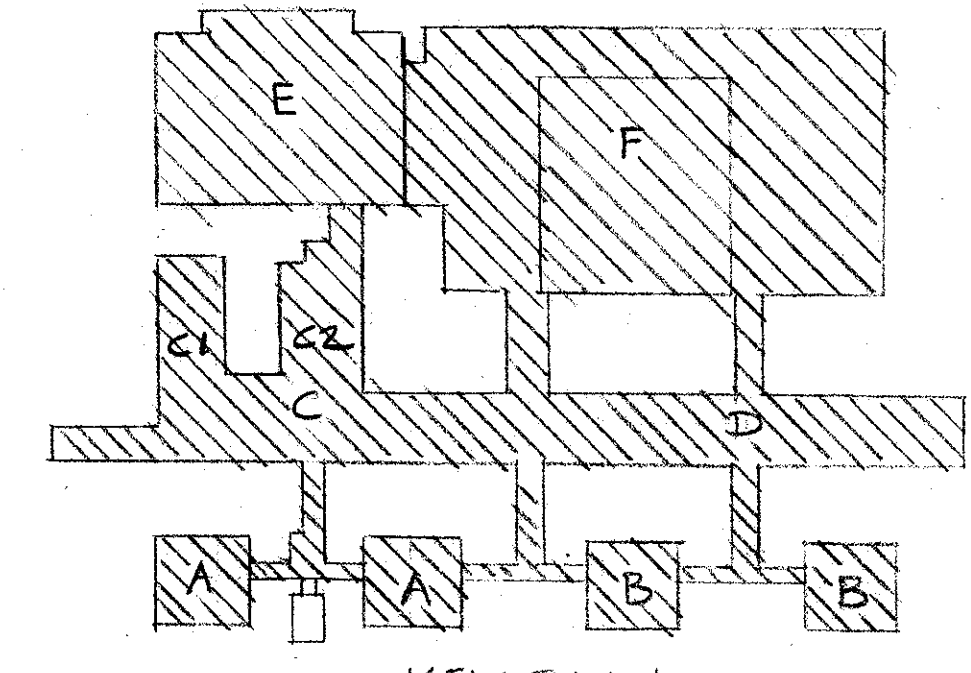
④ CHAIN-LINK FENCE DETAIL  
ME-3 N.T.S.



⑤ CHAIN-LINK GATE DETAIL  
ME-3 N.T.S.



① SITE PLAN  
ME-3 SCALE: 1"=20'-0"



KEY PLAN  
N.T.S.



CONSULTANT  
**BYRON J. STEWART & ASSOC.**  
ARCHITECTS & PLANNERS  
2300 MARENGO ST.  
NEW ORLEANS, LA 70115  
(504) 897-5339

CLIENT  
**NEW ORLEANS PARISH SCHOOL BOARD**  
4300 ALMONASTER AVE  
NEW ORLEANS, LA

PROJECT  
**CARTER G. WOODSON MIDDLE SCHOOL**  
RE-ROOFING & MECHANICAL REPAIRS

DRAWN  
K.K.  
CHECKED  
M.K.  
DATE  
4-21-97  
SCALE  
AS NOTED  
JOB NO.

SHEET  
**ME-3**  
OF 22 SHEETS