

REVISIONS	BY

CONSULTANT
 BYRON J. STEWART & ASSOC.
 ARCHITECTS & PLANNERS
 2300 MARENGO ST.
 NEW ORLEANS, LA 70115
 (504) 897-5339

CLIENT
 NEW ORLEANS PARISH
 SCHOOL BOARD
 4300 ALMONDSTEER AVE
 NEW ORLEANS, LA

PROJECT
 CARTER G. WOODSON MIDDLE SCHOOL
 RE-ROOFING & MECHANICAL REPAIRS

DRAWN	KK
CHECKED	MK
DATE	4-21-97
SCALE	AS NOTED
JOB NO.	

SHEET
ME-10
 OF 22 SHEETS

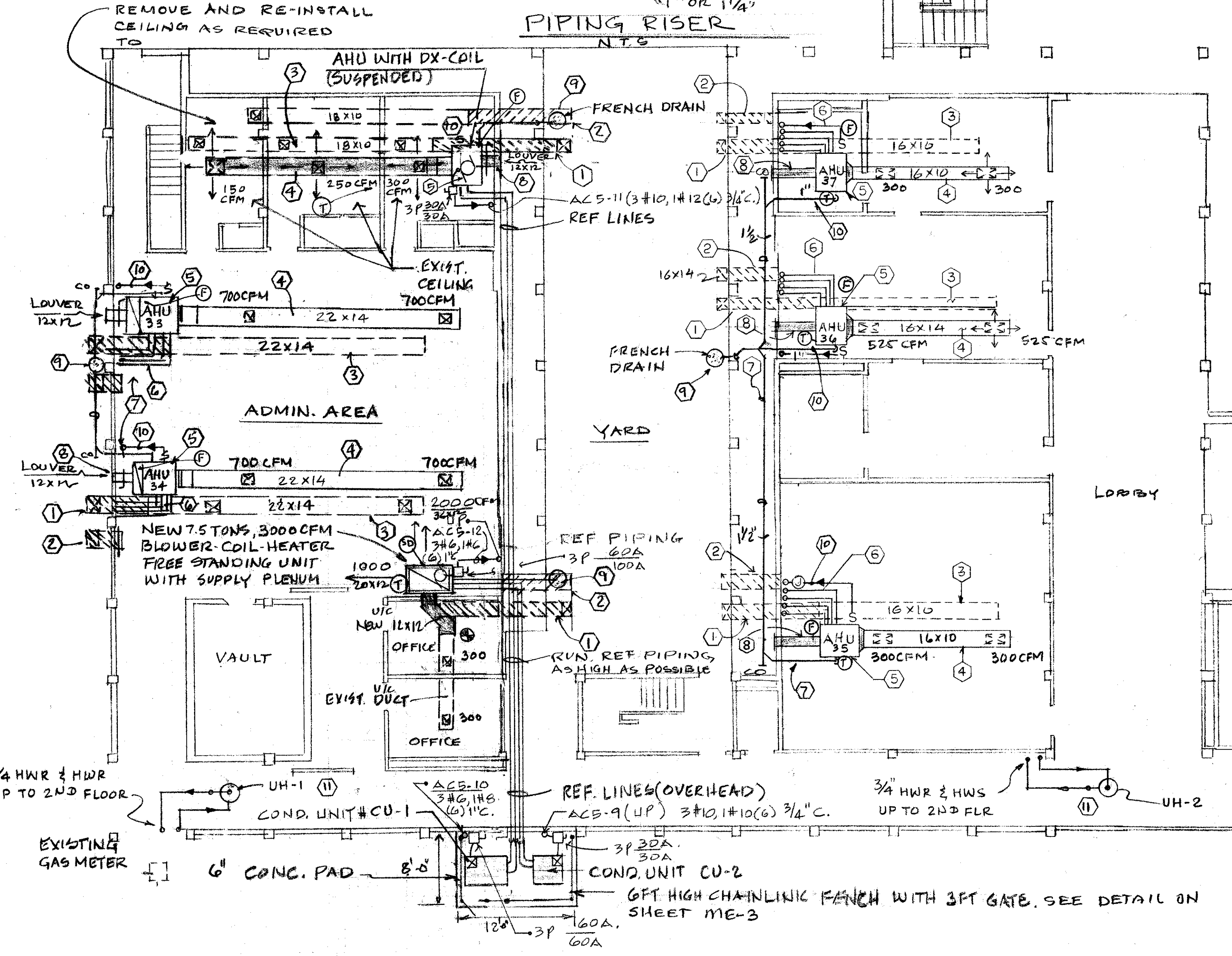
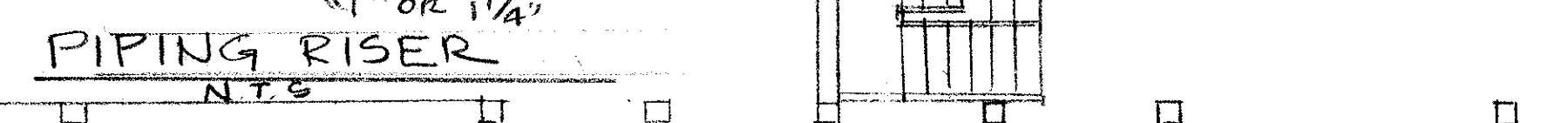
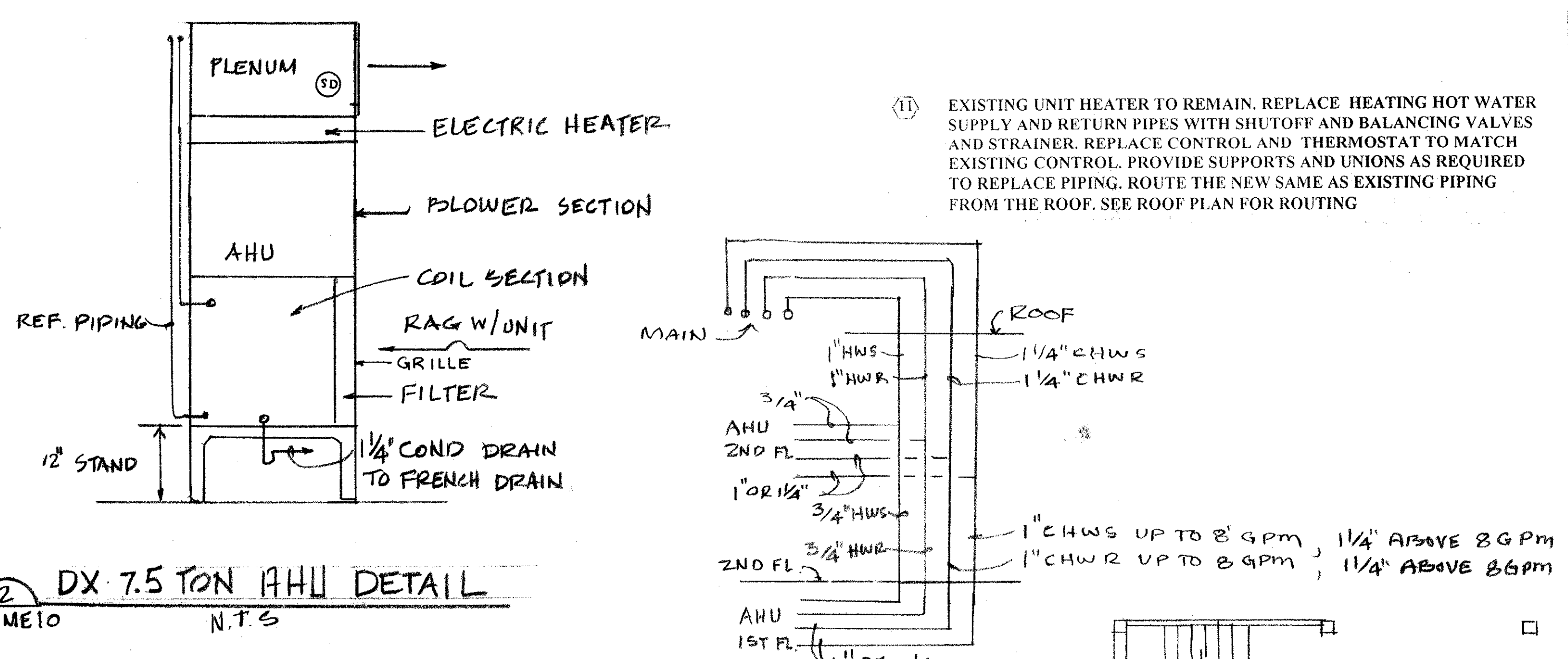
KEY NOTES

- REMOVE EXISTING SUPPLY AIR DUCT FROM EXISTING ROOF MOUNTED FAN COIL UNIT (FCU) TO PARTIAL CLASSROOM. CLOSE WALL OPENING WHERE DUCT PENETRATING THE WALL TO MATCH EXISTING.
- REMOVE EXISTING RETURN AIR DUCT FROM ROOF MOUNTED "FCU" TO ALL THE IN CLASSROOM WITH RETURN AIR GRILLE IN WALL. PATCH HOLE IN WALL TO MATCH EXISTING WHERE DUCT PENETRATING IN WALL.
- RELOCATE EXISTING DUCT WITH SUPPLY AIR DIFFUSERS AND REUSE FOR NEW AIR HANDLING UNIT (AHU) AIR DISTRIBUTION. MODIFY THE DUCT AS REQUIRED TO SUIT NEW SYSTEM.
- RELOCATED SUPPLY AIR DUCT, SUPPLY DIFFUSER MAY NEED TO BE RELOCATED IF CONFLICTED WITH NEW TRANSITION TO NEW "AHU". PROVIDE NEW TRANSITION BETWEEN DUCT AND "AHU" DISCHARGE OPENING.
- NEW AIR HANDLING UNIT SUSPENDED FROM STRUCTURE ABOVE WITH UNTRU. AND THREADED 1/2" ROD AND EXPANSION BOLTS. PROVIDE DISCONNECT SWITCH FOR EACH "AHU". THE "AHU" MUST MOUNT AS HIGH AS POSSIBLE, BUT NOT LESS THAN 7'3" FROM THE FLOOR THE UNIT AND RELATED DUCT, PIPING, CONTROL, DRAIN, ELECTRICAL CONDUIT, ETC. SHALL BE INSTALLED BETWEEN THE EXISTING BEAM IN EACH CLASSROOM. PROVIDE UNIT MOUNTED THERMOSTAT FOR EACH "AHU". PROVIDE FIRESTAT AND INTERLOCUE WITH FAN CONTROL.
- NEW 1 1/4" CHILLED WATER SUPPLY AND RETURN PIPING, AND 3/4" HEATING HOT WATER SUPPLY AND RETURN PIPING TO EACH "AHU" FROM ROOF. CORE DRILL HOLE IN FLOOR TO INSTALL NEW PIPES AND CONDUITS THROUGH THE EXISTING FLOORS (ROOF AND SECOND FLOOR). REFER TO COIL PIPING DETAIL-2. PROVIDE THREE WAY VALVE. 1" CHWS & 1" CHWR UP TO 8 GPM, 1 1/4" CHWS & 1 1/4" CHWR ABOVE 8 GPM, UNLESS NOTED.
- NEW ONE EACH CONDENSATE DRAIN LINE FOR EACH "AHU" WITH CLEANOUT FROM "AHU" TO OUTSIDE 2" RISER. INSULATE CONDENSATE DRAIN LINE.

- NEW 12" X 12" OUTSIDE AIR WITH MANUAL VOLUME DAMPER FROM NEW 12" X 12" WEATHER PROOF LOUVER/GRILLE WITH BIRD SCREEN. PROVIDE FIRE DAMPER BEHIND THE LOUVER/GRILLE. CUT WALL AS REQUIRED TO INSTALL NEW LOUVER/GRILLE OR OPTION TO USE EXISTING OPENING WHERE SUPPLY OR RETURN AIR DUCT REMOVED. ROUTE 12" X 12" OUTSIDE DUCT AS REQUIRED.
- NEW TWO-INCH PVC RISER SERVING FIRST AND SECOND FLOOR CONDENSATE DRAIN FROM "AHU" WITH ONE INCH BRANCH. THE RISER SHALL BE SUPPORTED FROM EXISTING COLUMN AND DOWN TO TWO DIAMETER FEET FRENCH DRAIN WITH GRAVEL. ROUTE DRAIN TO FRENCH DRAIN AND TERMINATE DRAIN. THE DRAIN MUST BE SUPPORTED AND ANCHORED PROPERLY. CUT AND PATCH EXISTING GROUND/CONCRETE AS REQUIRED TO INSTALL FRENCH DRAIN REQUIRED.
- NEW CONDUIT SHALL RUN PARALLEL TO PIPING FROM ROOF. PROVIDE JUNCTION BOX WHERE SPLIT CONDUITS TO SERVE TWO UNITS. DISCONNECT POWER TO EXISTING FAN COIL UNIT ON ROOF AND PROVIDE JUNCTION BOX IN NEW ATTIC AND EXTEND NEW CONDUIT AND WIRES TO PROVIDE POWER TO NEW "AHU". PROVIDE DISCONNECT SWITCH FOR EACH NEW "AHU". CORE DRILL FLOOR AS REQUIRED TO INSTALL CONDUIT. PATCH HOLES.

LEGEND

- REMOVE EXISTING DUCT
- RELOCATED DUCT
- NEW DUCT
- NEW PIPING
- NEW CONDENSATE DRAIN
- NEW DISCONNECT SWITCH
- JUNCTION BOX



FIRST FLOOR PLAN - AREA "C"
 ME-10 SCALE: 1/8" = 1'-0"

