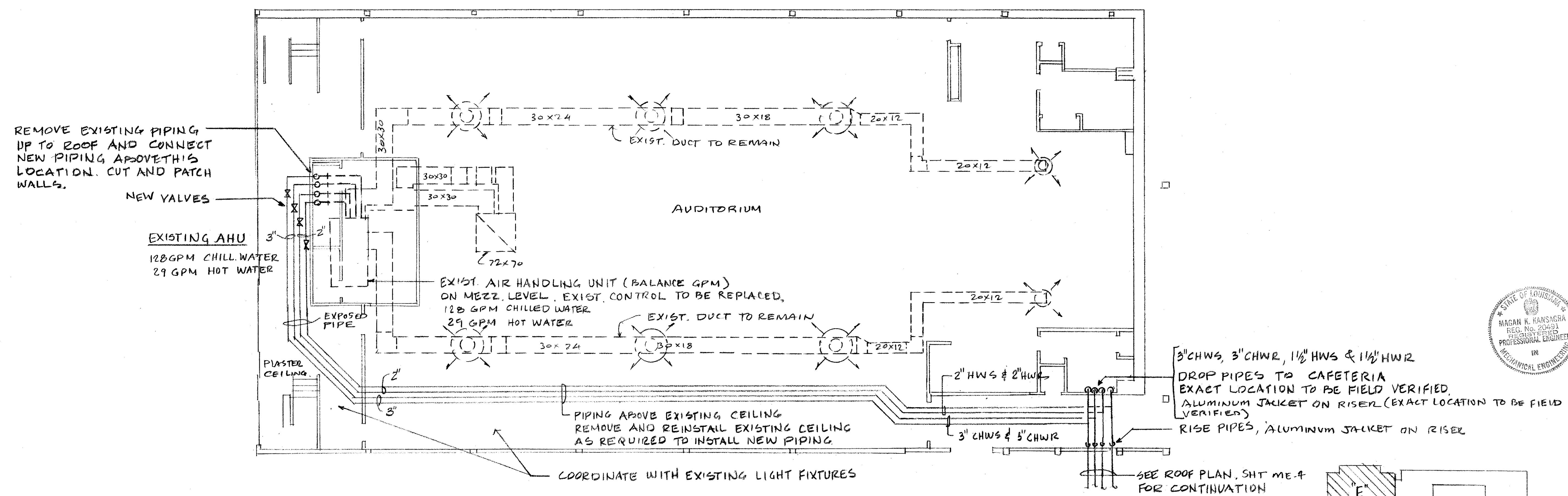
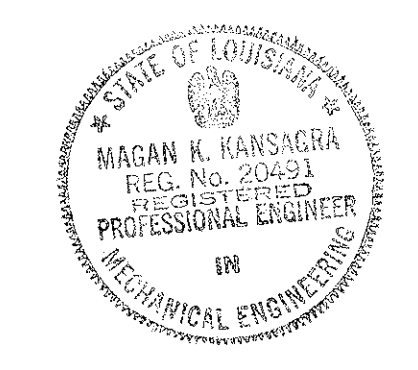


REVISIONS	BY

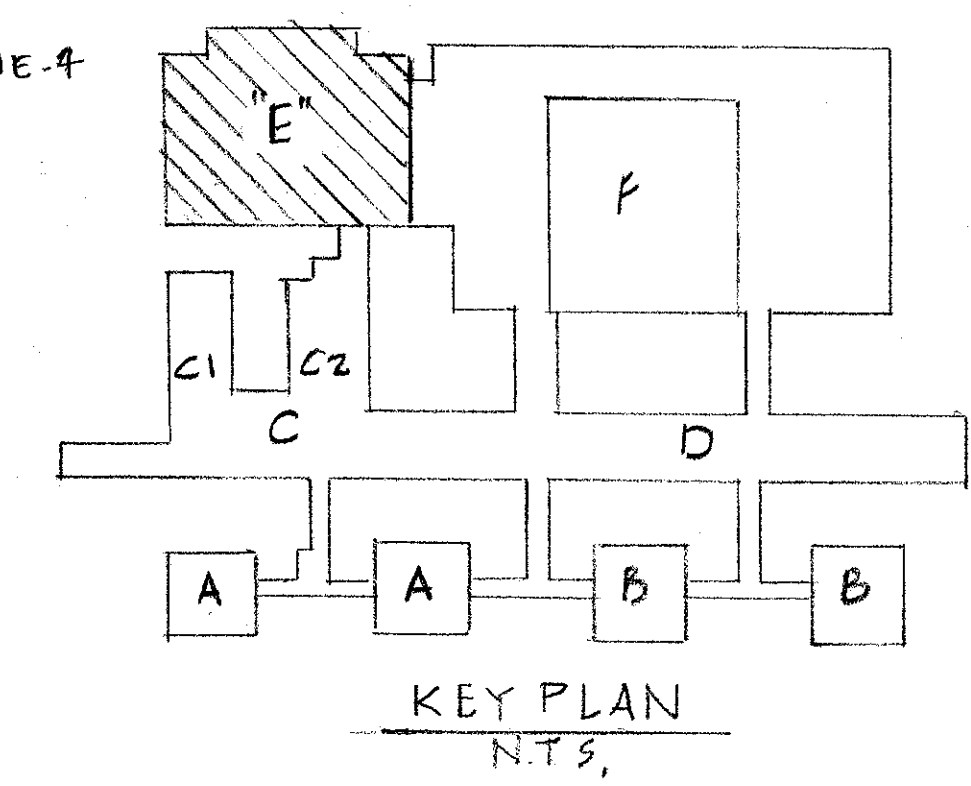
CONSULTANT
 BYRON J. STEWART & ASSOC.
 ARCHITECTS & PLANNERS
 2300 MARENGO ST.
 NEW ORLEANS, LA. 70115
 (504) 897-5339

CLIENT
 NEW ORLEANS PARISH
 SCHOOL BOARD
 4300 ALMONDMASTER AVE
 NEW ORLEANS, LA.

PROJECT
 CARTER G. WOODSON MIDDLE SCHOOL
 RE-ROOFING & MECHANICAL REPAIRS



SECOND FLOOR PLAN - AREA "E"
 SCALE: 1/8" = 1'-0"



DRAWN	KK
CHECKED	MK
DATE	4-21-97
SCALE	AS NOTED
JOB NO.	
SHEET	ME-15
OF 22 SHEETS	