

BRADFORD J. DUDLEY
 345 THIRD STREET
 LAGUNA BEACH, CALIFORNIA 92651
 T: 949.376.3076 F: 949.376.3078

E:\Projects\Graphic Design Files\PM PS.jpg

METAIRIE, LA

3321 HESSMER AVENUE
 METAIRIE, LA 70002

CLIENT:
 MARK AND LISA PALERMO

PROFESSIONAL SEAL:

SIGNATURE DATE

SUBMISSION	DATE
CONCEPT PLAN	12.01.09
CONSULTANT COORDINATION	12.14.09

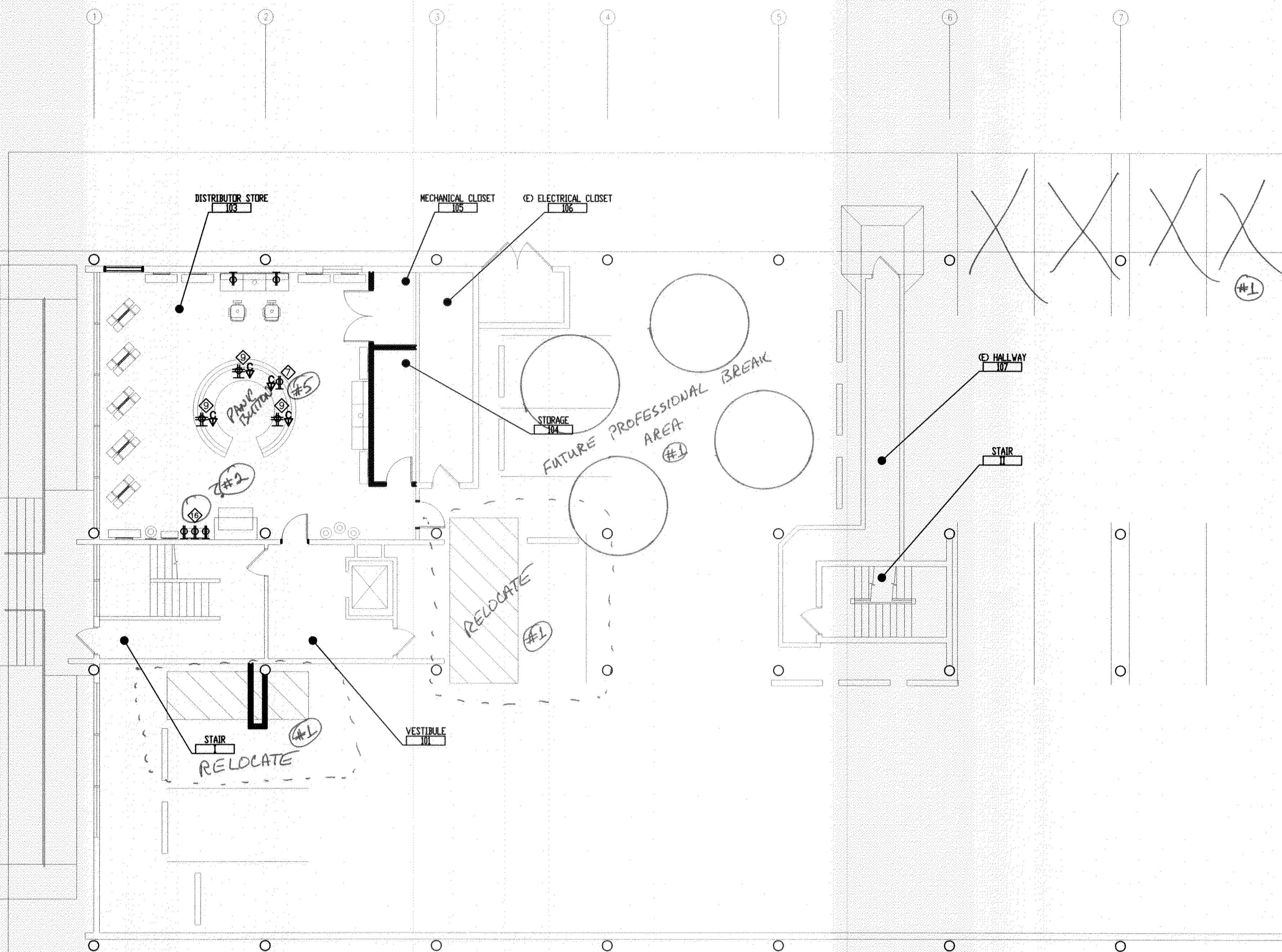
PROJECT NO: 0921
 SCALE: 1/8" = 1'

POWER LAYOUT PLAN
 FIRST FLOOR

A 201

NOT FOR CONSTRUCTION: 12.14.09

- 12/16/09
- ① RECONFIGURE PARKING TO ACCOMMODATE "WRAP AROUND" DRIVEWAY/ DUMPSTER, AND FUTURE PROFESSIONAL BREAK AREA.
 - ② WHAT IS NOTE 16
 - ③ SPECIALTY NOTE 2, where is TELEVISION T.B. LOCATED?
 - ④ IS RECEPTION DESK PRE-WIRED? IF SO, LOCATION OF ELECTRICAL CONNECTION. IF NOT, SPECIFICATION OF DESK NEEDED FOR POWER LAYOUT!
 - ⑤ MIKE P. TO CONFIRM ACTUAL EQUIPMENT REQUIREMENTS FOR RECEPTION COUNTER.
 - ⑥ SECURITY/FIRE ALARM REQUIREMENTS...
 - CAMERA ? - Setup mtg w/ Summit sol for Mark & Heather
 - PANIC BUTTON ?
 - FIRE DETECTION ?



1 POWER LAYOUT PLAN - FIRST FLOOR
 A 201 SCALE: 1/8"=1'-0"

GENERAL NOTES:

1. GENERAL CONTRACTOR TO COORDINATE A PRECONSTRUCTION SITE WALK THROUGH MEETING TO FIELD VERIFY OUTLET AND FIXTURE LOCATIONS AND TYPES WITH ARCHITECT, OWNER AND ELECTRICAL SUBCONTRACTOR PRIOR TO COMMENCING ELECTRICAL WORK AND PURCHASE OF FIXTURES.
2. VERIFY POWER REQUIREMENTS OF ALL APPLIANCES WITH SELECTED APPLIANCE MANUFACTURER.
3. RECESSED LIGHTING FIXTURES RECESSED INTO INSULATED CEILINGS MUST BE APPROVED FOR ZERO CLEARANCE INSULATION COVER (IC) BY UNDERWRITER LABORATORIES OR OTHER TESTING/RATING LABORATORIES RECOGNIZED BY THE INTERNATIONAL CONFERENCE OF BUILDING OFFICIALS (ICBO).
4. EXHAUST FAN TO BE CAPABLE OF PROVIDING 5 FULL VOLUME AIR CHANGES PER HOUR.
5. WIRING DEVICES: SWITCHES AND CONVENIENCE OUTLETS SHALL BE "LEVITON" SPEC. GRADE. COLOR: WHITE, NOT IVORY. INSTALL AT HEIGHTS REQUIRED BY CURRENT CODE, U.N.O.
6. EXTENT: COMPLETE WIRING INSTALLATION FOR POWER, LIGHTING, SIGNAL SYSTEM AND TELEPHONE. CODES: ALL WIRING AND MATERIAL SHALL BE IN FULL ACCORDANCE WITH NATIONAL, STATE AND LOCAL ELECTRICAL CODES INCLUDING TITLE 24.
7. OUTLET HEIGHTS INDICATED ON PLAN ARE TO CENTER OF FIXTURE AND HEIGHT ABOVE THE FINISHED FLOOR ELEVATION. VERIFY CODE COMPLIANCE WITH BUILDING INSPECTOR.
8. OUTLETS AT ALL WADSWORTH DESIGN CUTTING STATIONS SHOULD BE GREY WITH BRUSHED ALUMINUM COVER PLATES
9. ALL COVER PLATES AT FLOOR BOX LOCATIONS SHALL HAVE STAINLESS STEEL COVER PLATES.
10. ALL OUTLETS IN STAINLESS STEEL TO BE GREY WITH STAINLESS STEEL COVER PLATES.
11. ALL OUTLETS/SWITCHES IN SLATE WALLS TO BE BLACK WITH BLACK COVER PLATES.

POWER LEGEND:

- | | |
|--|---|
| | WALL MOUNTED FLUSH J-BOX |
| | DUPLEX CONVENIENCE OUTLET |
| | GROUND FAULT INDICATOR (GFI) RECEPTACLE |
| | EXTERIOR WALL MOUNTED WATER RESISTANT CONVENIENCE OUTLET, PROVIDE GROUND FAULT INDICATOR (GFI), TYPICAL. |
| | HALF SWITCHED CONVENIENCE OUTLET |
| | FOURPLEX CONVENIENCE OUTLET |
| | FLOOR MOUNTED DUPLEX CONVENIENCE OUTLET |
| | FLOOR MOUNTED FOURPLEX CONVENIENCE OUTLET |
| | (4) CIRCUITS AT EACH STYLING STATION STUBBED THROUGH CONDUIT IN THE FLOOR. INSTALL FOURPLEX RECEPTACLE IN PRE-INSTALLED JUNCTION BOX IN STYLING STATION |
| | FLUSH MOUNTED RECESSED JUNCTION BOX |
| | CEILING MOUNTED OUTLET |
| | DATA CONNECTION. VERIFY WITH AV CONSULTANT AND COMPUTER, PHONE PROVIDER. |

SPECIALTY NOTES:

- #2 PROVIDE CABLE AND QUAD RECEPTACLE FOR FLATSCREEN TELEVISION, COORDINATE MOUNTING HEIGHT WITH A.V. CONSULTANT
- #3 PROVIDE POWER AND NETWORK CONNECTION FLOOR BOXES FOR OWNER PROVIDED COMPUTERS AND POINT OF SALE EQUIPMENT; VERIFY EXACT LOCATION WITH WADSWORTH DESIGN.
- #4 PROVIDE POWER AND NETWORK CONNECTION FOR OWNER PROVIDED COPIER/PRINTER; VERIFY EQUIPMENT WITH OWNER.
- #5 PROVIDE POWER AND NETWORK CONNECTION FLOOR BOXES FOR OWNER PROVIDED COMPUTERS AND POINT OF SALE EQUIPMENT; VERIFY EXACT LOCATION WITH WADSWORTH DESIGN.
- #6 PROVIDE POWER AND NETWORK CONNECTION FLOOR BOXES FOR OWNER PROVIDED COMPUTERS AND POINT OF SALE EQUIPMENT; VERIFY EXACT LOCATION WITH WADSWORTH DESIGN.
- #7 PROVIDE POWER AND NETWORK CONNECTION FOR OWNER PROVIDED COPIER/PRINTER; VERIFY EQUIPMENT WITH OWNER.
- #8 PROVIDE POWER AND NETWORK CONNECTION FLOOR BOXES FOR OWNER PROVIDED COMPUTERS AND POINT OF SALE EQUIPMENT; VERIFY EXACT LOCATION WITH WADSWORTH DESIGN.
- #9 PROVIDE POWER AND NETWORK CONNECTION FLOOR BOXES FOR OWNER PROVIDED COMPUTERS AND POINT OF SALE EQUIPMENT; VERIFY EXACT LOCATION WITH WADSWORTH DESIGN.
- #10 PROVIDE POWER AND NETWORK CONNECTION FLOOR BOXES FOR OWNER PROVIDED COMPUTERS AND POINT OF SALE EQUIPMENT; VERIFY EXACT LOCATION WITH WADSWORTH DESIGN.
- #11 PROVIDE POWER AND NETWORK CONNECTION FLOOR BOXES FOR OWNER PROVIDED COMPUTERS AND POINT OF SALE EQUIPMENT; VERIFY EXACT LOCATION WITH WADSWORTH DESIGN.
- #12 PROVIDE POWER AND NETWORK CONNECTION FLOOR BOXES FOR OWNER PROVIDED COMPUTERS AND POINT OF SALE EQUIPMENT; VERIFY EXACT LOCATION WITH WADSWORTH DESIGN.
- #13 PROVIDE POWER AND NETWORK CONNECTION FLOOR BOXES FOR OWNER PROVIDED COMPUTERS AND POINT OF SALE EQUIPMENT; VERIFY EXACT LOCATION WITH WADSWORTH DESIGN.
- #14 PROVIDE POWER AND NETWORK CONNECTION FLOOR BOXES FOR OWNER PROVIDED COMPUTERS AND POINT OF SALE EQUIPMENT; VERIFY EXACT LOCATION WITH WADSWORTH DESIGN.
- #15 PROVIDE POWER AND NETWORK CONNECTION FLOOR BOXES FOR OWNER PROVIDED COMPUTERS AND POINT OF SALE EQUIPMENT; VERIFY EXACT LOCATION WITH WADSWORTH DESIGN.
- #16 PROVIDE POWER AND NETWORK CONNECTION FLOOR BOXES FOR OWNER PROVIDED COMPUTERS AND POINT OF SALE EQUIPMENT; VERIFY EXACT LOCATION WITH WADSWORTH DESIGN.
- #17 PROVIDE POWER AND NETWORK CONNECTION FLOOR BOXES FOR OWNER PROVIDED COMPUTERS AND POINT OF SALE EQUIPMENT; VERIFY EXACT LOCATION WITH WADSWORTH DESIGN.
- #18 PROVIDE POWER AND NETWORK CONNECTION FLOOR BOXES FOR OWNER PROVIDED COMPUTERS AND POINT OF SALE EQUIPMENT; VERIFY EXACT LOCATION WITH WADSWORTH DESIGN.
- #19 PROVIDE POWER AND NETWORK CONNECTION FLOOR BOXES FOR OWNER PROVIDED COMPUTERS AND POINT OF SALE EQUIPMENT; VERIFY EXACT LOCATION WITH WADSWORTH DESIGN.
- #20 PROVIDE POWER AND NETWORK CONNECTION FLOOR BOXES FOR OWNER PROVIDED COMPUTERS AND POINT OF SALE EQUIPMENT; VERIFY EXACT LOCATION WITH WADSWORTH DESIGN.