

DAMMON
ENGINEERING, INC.

CHIEF ENGINEER
EMMETT
DAMMON, P.E.

CHIEF ARCHITECT
ROBERT
WILTSE

1095 FLORIDA AVENUE
SLIDELL, LA. 70458
OFFICE: 985-649-5832
FAX: 985-641-5950

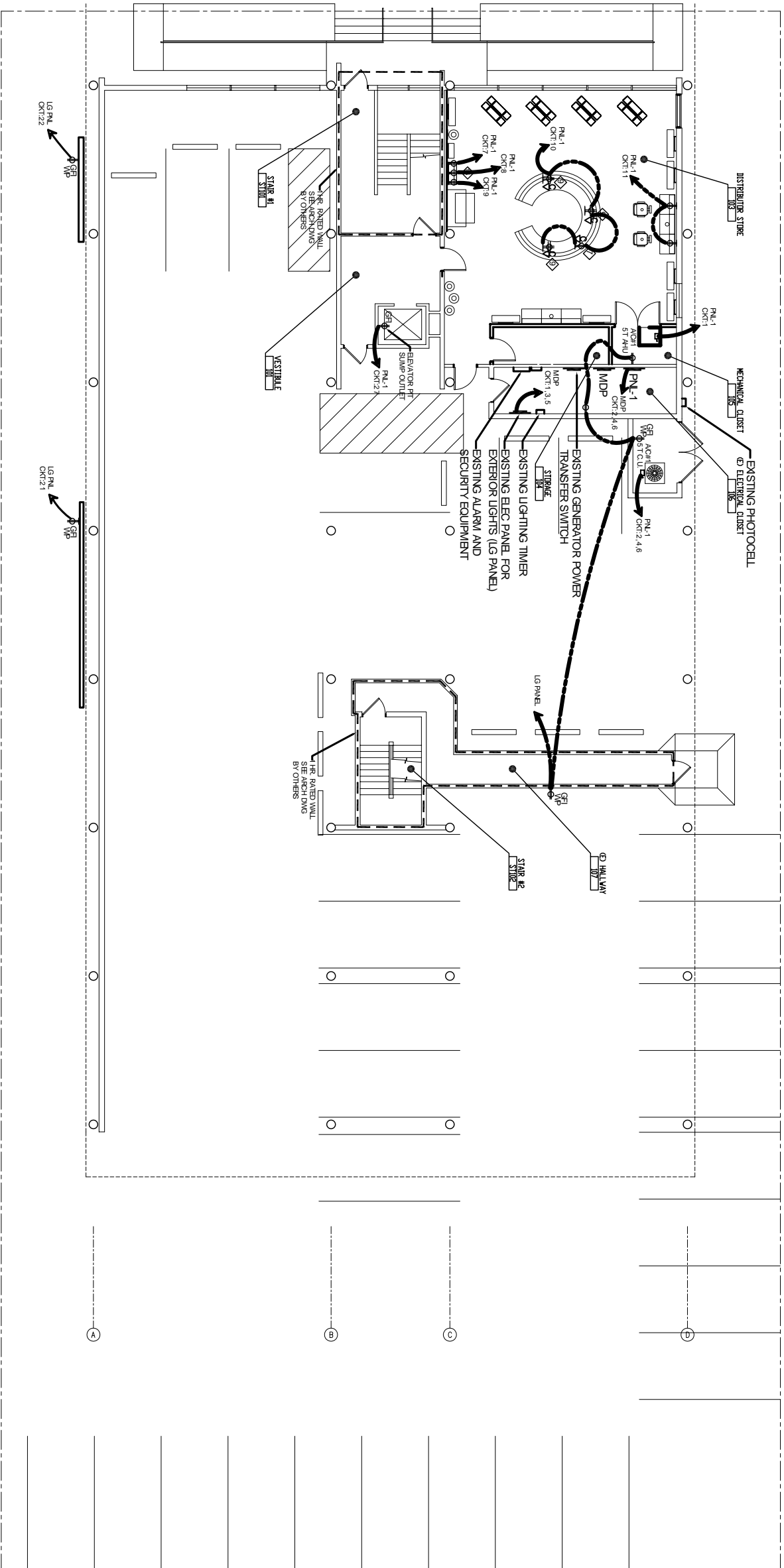
WEBSITE:
WWW.DAMMONENGINEERING.COM
EMAIL:
DAMMONENG@BLSOUTH.NET

ARCHITECTURE
ENGINEERING
STUDIES
PLANNING
INVESTIGATION
EXPERT WITNESS

PAUL MITCHELL
SCHOOL
3321 HESSMER AVE
METAIRIE, LA
70002

FIRST FLOOR
POWER PLAN

REV:	
SCALE:	AS NOTED
JOB#:	2051
DATE:	01-04-10
SHEET	
OF	E-1



FIRST FLOOR POWER PLAN
SCALE: 1/8" = 1'

FOR GENERAL ELECTRIC NOTES SEE SHEET E-9
FOR ELECTRIC PANEL SCHEDULES SEE SHEET E-8

SPECIALTY NOTES

- 7 PROVIDE POWER AND NETWORK CONNECTION FOR OWNER PROVIDED COPIER/PRINTER; VERIFY EQUIPMENT WITH OWNER.
- 9 PROVIDE POWER AND NETWORK CONNECTION FLOOR BOXES FOR OWNER PROVIDED COMPUTERS AND POINT OF SALE EQUIPMENT; VERIFY EQUIPMENT WITH OWNER. VERIFY EXACT LOCATION WITH WADSWORTH DESIGN.
- 16 WALL MOUNTED TOOL BAR BY WADSWORTH DESIGN; 3 OUTLETS WITH DEDICATED CIRCUITS REQ.

POWER LEGEND

- | | | | |
|--|--|--|---|
| | WALL MOUNTED FLUSH J-BOX | | FLUSH MOUNTED RECESSED JUNCTION BOX |
| | DUPLEX CONVENIENCE OUTLET | | CEILING MOUNTED OUTLET |
| | GROUND FAULT INDICATOR (GFI) RECEPTICAL | | DATA CONNECTION. VERIFY WITH AV CONSULTANT AND COMPUTER, PHONE PROVIDER. |
| | EXTERIOR WALL MOUNTED WATER RESISTANT CONVENIENCE OUTLET. PROVIDE GROUND FAULT INDICATOR (GFI), TYPICAL. | | (2) CIRCUITS AT EACH STYLING STATION STUBBED THROUGH CONDUIT IN THE FLOOR. INSTALL FOURPLEX RECEPTACLE IN PRE-INSTALLED JUNCTION BOX IN STYLING STATION |
| | HALF SWITCHED CONVENIENCE OUTLET | | ELECTRIC PANEL |
| | FOURPLEX CONVENIENCE OUTLET | | DISCONNECT |
| | FLOOR MOUNTED DUPLEX CONVENIENCE OUTLET | | |
| | FLOOR MOUNTED FOURPLEX CONVENIENCE OUTLET | | |