

**DAMMON**  
ENGINEERING, INC.

CHIEF ENGINEER  
EMMETT  
DAMMON, P.E.  
CHIEF ARCHITECT  
ROBERT  
WILTSE

1095 FLORIDA AVENUE  
SUDDEN, LA, 70458  
OFFICE: 985-649-5832  
FAX: 985-641-5950

WEBSITE:  
WWW.DAMMONENGINEERING.COM  
EMAIL:  
DAMMONENG@BELLFLOWER.NET

ARCHITECTURE  
ENGINEERING  
STUDIES  
PLANNING  
INVESTIGATION  
EXPERT WITNESS

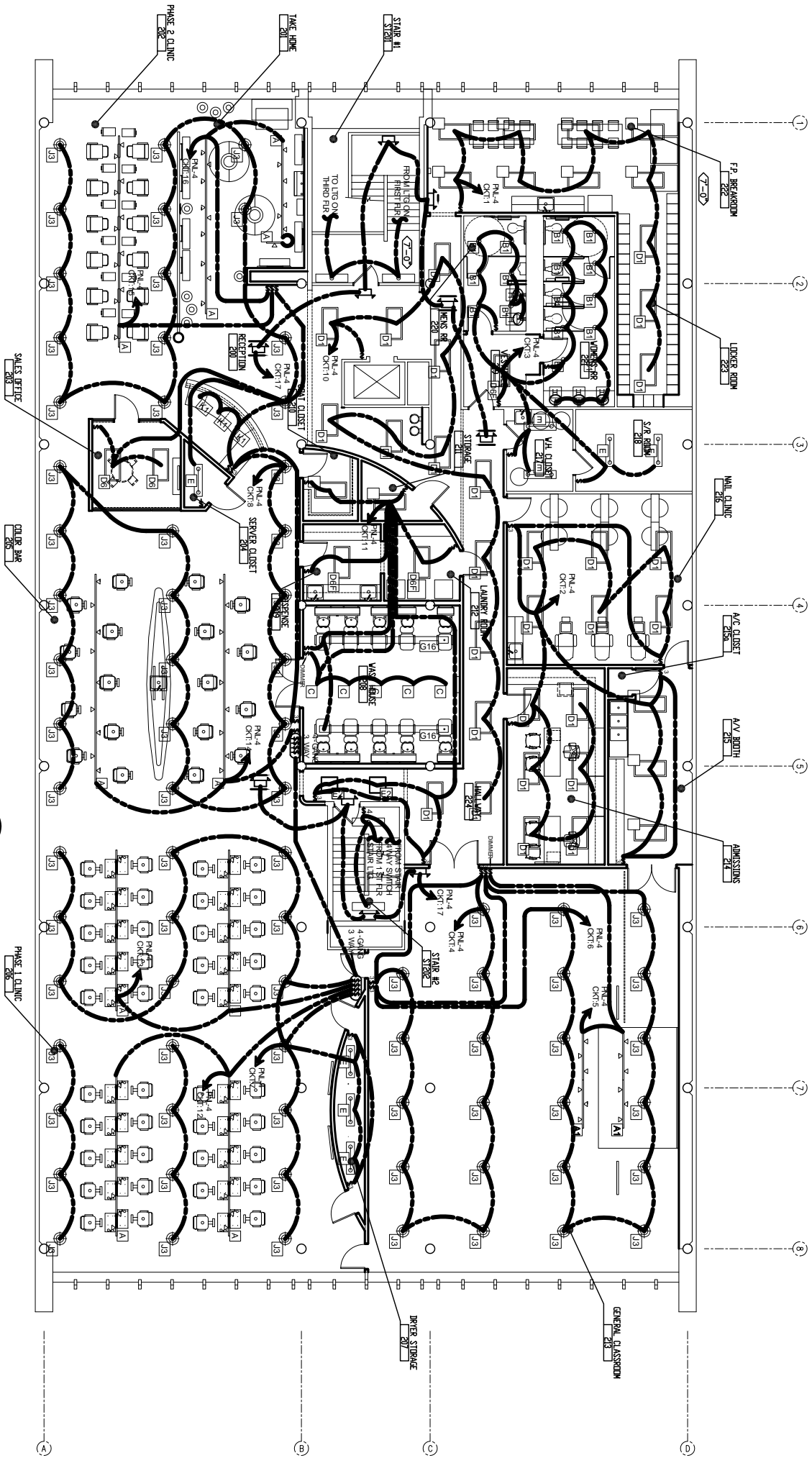
PAUL MITCHELL  
SCHOOL  
8321 HESSMER AVE  
METAIRIE, LA  
70002

SECOND FLOOR  
LIGHTING PLAN

REV:  
SCALE: AS NOTED  
JOB#: 2051  
DATE: 01-04-10  
SHEET

OF

E-6



SECOND FLOOR LIGHTING PLAN  
SCALE: 1/8" = 1'



FOR GENERAL ELECTRIC NOTES SEE SHEET E-9  
FOR ELECTRIC PANEL SCHEDULES SEE SHEET E-8

LIGHTING LEGEND		SEE LIGHTING LEGEND ON E-9 FOR MORE DETAILED FIXTURE INFORMATION	
A	TRACK LTG. METAL HALIDE	DGF	2x4 (3) LAMP FLOURESCENT WITH FLANGE KIT
A1	TRACK LTG. HALOGEN	E1	EXISTING 2x4 FIXTURE TO BE RELOCATED AND REUSED
B	7" DOWNLIGHT COMPACT FLOURESCENT (30W)	E2	EXISTING 2x2 FIXTURE TO BE RELOCATED AND REUSED
B1	7" DOWNLIGHT COMPACT FLOURESCENT (26W)	L1	EXISTING 1'00W BAY LIGHT TO BE REUSED
C	3" ADJUSTABLE DOWNLIGHT	L2	EXISTING DOWN LG. TO BE REUSED
D1	2x4 (2) LAMP FLOURESCENT	L3	EXISTING WALL PACK TO BE REUSED
D1F	2x4 (2) LAMP FLOURESCENT WITH FLANGE KIT	L4	EXISTING NIGHT LIGHT WALL PACK TO BE REUSED
D6	2x4 (3) LAMP FLOURESCENT	L5	EXISTING SECURITY CAMERA TO BE REUSED
		L5	EXISTING 1'x4 SURFACE MTD. TO BE REUSED