

**DAMMON**  
ENGINEERING, INC.

CHIEF ENGINEER  
ENAMETT  
DAMMON, P.E.  
CHIEF ARCHITECT  
ROBERT  
WILTSE

1095 FLORIDA AVENUE  
SUITE L, LA 70458  
OFFICE: 985-649-5632  
FAX: 985-641-5950

WEBSITE:  
WWW.DAMMONENGINEERING.COM  
EMAIL:  
DAMMONENG@Bellsouth.net

ARCHITECTURE  
ENGINEERING  
STUDIES  
PLANNING  
INVESTIGATION  
EXPERT WITNESS

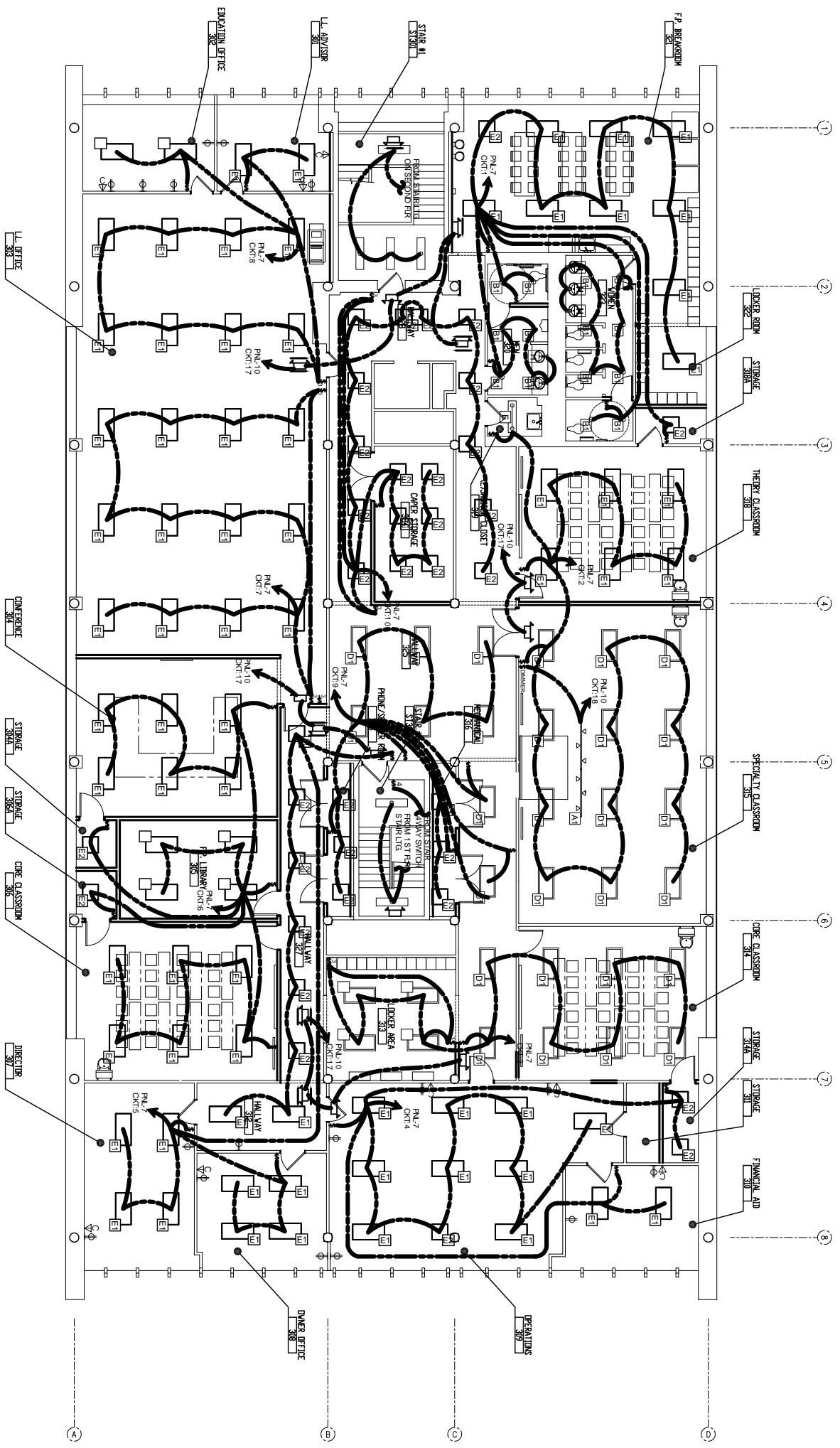
PAUL MITCHELL  
SCHOOL  
3321 HESSMER AVE  
METAIRIE, LA  
70002

THIRD FLOOR  
LIGHTING PLAN

REV:  
SCALE: AS NOTED  
JOB#: 2051  
DATE: XX-XX-08  
SHEET

OF

E-7



THIRD FLOOR LIGHTING PLAN  
SCALE: 1/8" = 1'



FOR GENERAL ELECTRIC NOTES SEE SHEET E-9  
FOR ELECTRIC PANEL SCHEDULES SEE SHEET E-8

SEE LIGHTING LEGEND ON E-9 FOR MORE  
DETAILED FIXTURE INFORMATION

LIGHTING LEGEND			
A	TRACK LTG. METAL HALIDE	D6F	2x4 (3)JLAMP FLOURESCENT WITH FLANGE KIT
A1	TRACK LTG. HALOGEN	E	1x4 SURFACE MOUNT FLOURESCENT
B	7' DOWNLIGHT COMPACT FLOURESCENT (30W)	E2	EXISTING 2x2 FXTURE TO BE RELOCATED AND REUSED
B1	7' DOWNLIGHT COMPACT FLOURESCENT (26W)	L1	EXISTING 100W BAY LIGHT TO BE REUSED
C	3' ADJUSTABLE DOWNLIGHT	L2	EXISTING DOWN LG. TO BE REUSED
D	2x4 (2)JLAMP FLOURESCENT	L3	EXISTING WALL PACK TO BE REUSED
D1	2x4 (2)JLAMP FLOURESCENT WITH FLANGE KIT	L4	EXISTING NIGHT LIGHT WALL PACK TO BE REUSED
D1F	2x4 (2)JLAMP FLOURESCENT WITH FLANGE KIT	L5	EXISTING SECURITY CAMERA TO BE REUSED
D6	2x4 (3)JLAMP FLOURESCENT		EXISTING 1x4 SURFACE MTD. TO BE REUSED
		E1	EXISTING 2x4 FXTURE TO BE RELOCATED AND REUSED
		E2	EXISTING 2x2 FXTURE TO BE RELOCATED AND REUSED
		L1	EXISTING 100W BAY LIGHT TO BE REUSED
		L2	EXISTING DOWN LG. TO BE REUSED
		L3	EXISTING WALL PACK TO BE REUSED
		L4	EXISTING NIGHT LIGHT WALL PACK TO BE REUSED
		L5	EXISTING SECURITY CAMERA TO BE REUSED
			EXISTING 1x4 SURFACE MTD. TO BE REUSED