

**SPECIALTY ELECTRICAL NOTES**

- GENERAL CONTRACTOR TO COORDINATE A RECONSTRUCTION SITE WALK THROUGH MEETING TO FIELD VERIFY OUTLET AND RECEPTACLE LOCATIONS AND TYPES WITH ARCHITECT, OWNER AND ELECTRICAL SUBCONTRACTOR PRIOR TO COMMENCING ELECTRICAL WORK AND PURCHASE OF FIXTURES.
- VERIFY POWER REQUIREMENTS OF ALL APPLIANCES WITH SELECTED APPLIANCE MANUFACTURER.
- RECESSED LIGHTING FIXTURES RECESSED INTO INSULATED CEILING MUST BE APPROVED FOR ZERO CLEARANCE INSULATION COVER (IC) BY UNDERWRITER LABORATORIES OR OTHER TESTING/INSULATING LABORATORIES RECOGNIZED BY THE INTERNATIONAL CONFERENCE OF BUILDING OFFICIALS (ICBO).
- EXHAUST FAN TO BE CAPABLE OF PROVIDING 5 FULL VOLUME AIR CHANGES PER HOUR.
- WIRING DEVICES: SWITCHES AND CONVENIENCE OUTLETS SHALL BE "VENTON" SPEC. GRADE. COLOR: WHITE, NOT IVORY. INSTALL AT HEIGHTS REQUIRED BY CURRENT CODE, U.M.C.
- EXTENT: COMPLETE WIRING INSTALLATION FOR POWER, LIGHTING, SIGNAL SYSTEM AND TELEPHONE. CODES: ALL WIRING AND MATERIAL SHALL BE IN FULL ACCORDANCE WITH NATIONAL, STATE AND LOCAL ELECTRICAL CODES INCLUDING TITLE 24.
- OUTLET HEIGHTS INDICATED ON PLAN ARE TO CENTER OF FIXTURE AND HEIGHT ABOVE THE FINISHED FLOOR ELEVATION. VERIFY CODE COMPLIANCE WITH BUILDING INSPECTOR.
- OUTLETS AT ALL WADSWORTH DESIGN CUTTING STATIONS SHOULD BE GREY WITH BRUSHED ALUMINUM COVER PLATES OR OTHER COVER PLATES AT FLOOR BOX LOCATIONS SHALL HAVE STAINLESS STEEL COVER PLATES.
- ALL OUTLETS IN STAINLESS STEEL TO BE GREY WITH STAINLESS STEEL COVER PLATES.
- ALL OUTLETS/ SWITCHES IN SLATE WALLS TO BE BLACK WITH BLACK COVER PLATES.

ELECTRICAL LOAD SUMMARY			
LOAD TYPE	CONNECT LOAD (KVA)	DEMAND FACTOR	DEMAND LOAD (KVA)
LOAD TYPE	CONNECT LOAD (KVA)	DEMAND FACTOR	DEMAND LOAD (KVA)
LIGHTING (NEC TBL 220.42)	63.1	100%	63.1
RECEPTACLES (NEC TBL 220.44)	315.5	*	162.7
HVAC (GAS HEAT)	91.3	100%	91.3
HVAC (ELEC. HEAT)	46	100%	46
OTHER**	44.5	100%	44.5
TOTAL	560.4	100%	407.6

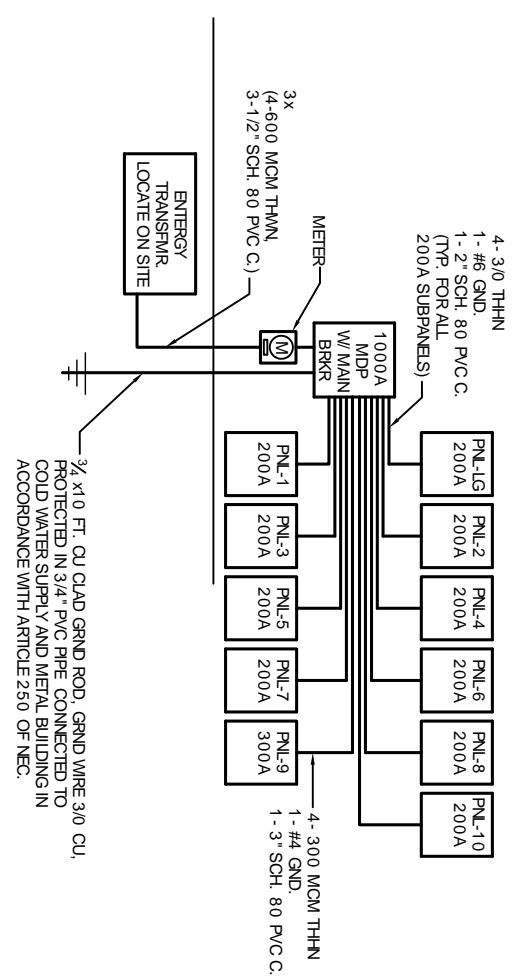
\* RECEPTACLE DEMAND FACTOR AT 100% FOR THE FIRST 10KW AND 50% ON THE REMAINDER  
 \*\* FIRE ALARM PULLS, SECURITY AND ALARM SYSTEMS, TOLL ROOM HAND DRIVERS AND EXHAUST FANS, COMMERCIAL DRIVERS CONSIDERED AS OTHER

**ELECTRICAL LIGHTING FIXTURE SCHEDULE**

1. ALL FIXTURES AND LAMPS SHALL BE SPECIFIED. SUBSTITUTES NOT ALLOWED. LEAD TIME ON LIGHTING FIXTURES IS UP TO 8 WEEKS AFTER RELEASE OF ORDER. PRE-APPROVED LIGHTING SUBMITTALS AVAILABLE ON LINE AFTER AWARD OF CONTRACT. DOWNLIGHTS WILL BE FURNISHED WITH HANGER BARS SHIPPED SEPARATELY. ALL TRACK SHALL BE MOUNTED TO STRUT FURNISHED BY THE CONTRACTOR.

2. LIGHT FIXTURES AND LAMPS ARE FURNISHED BY THE NATIONAL ACCOUNT VENDOR, PURCHASED BY THE CONTRACTOR. VERIFY W/ OWNER. ALL QUANTITIES OF FIXTURES ON QUOTATIONS ARE GUARANTEED.

**ELECTRICAL SERVICE CALCULATION**  
 [(615KW / 208V) / (SQ. RT. OF 3) x (80%) = 1365.7A  
 PROVIDE 120/208 3Ø 1400A SERVICE

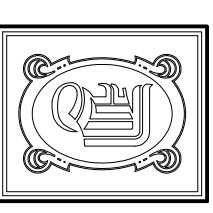


**ONE-LINE DIAGRAM/ELEVATION AT SERVICE ENTRANCE METER STATION**  
 SCALE: NONE

**GENERAL ELECTRICAL NOTES**

- ALL WORK SHALL CONFORM TO THE LATEST EDITION OF THE NATIONAL ELECTRICAL CODE, THE GOVERNING ELECTRICAL CODE AND ALL OTHER INSPECTION DEPARTMENTS HAVING JURISDICTION. OBTAIN CERTIFICATES OR APPROVAL WHERE REQUIRED.
- ALL MATERIALS FURNISHED SHALL BE NEW AND SHALL BE U.L. LISTED. SCALE DIMENSIONS SHALL NOT BE USED. THE EXACT LOCATION AND LOCATION OF ALL LIGHTING FIXTURES, RECEPTACLES AND TELEPHONE OUTLETS, ETC. SHALL BE DETERMINED BY ACTUAL CONDITIONS IN THE FIELD.
- PRIOR TO BIDDING, CONTRACTOR SHALL VISIT THE JOB SITE AND FAMILIARIZE THEMSELVES WITH THE EXISTING CONDITIONS.
- ELECTRICAL CONTRACTOR SHALL COORDINATE HIS WORK WITH OTHER TRADES AND WITH OTHER CONTRACTORS WHOSE WORK MAY AFFECT THIS INSTALLATION.
- ELECTRICAL CONTRACTOR SHALL COORDINATE INCOMING ELECTRICAL SERVICE WITH UTILITY COMPANY AND INCLUDE IN HIS BID ALL CHARGES AND FEES INCURRED IN MODIFICATIONS, WHERE MORE THAN ONE SWITCH OCCURS IN THE SAME LOCATION, THEY SHALL BE INSTALLED IN A GANG TYPE BOX UNDER ONE COVER PLATE.
- ELECTRICAL CONTRACTOR SHALL COORDINATE THE TELEPHONE INSTALLATION WITH THE TELEPHONE COMPANY AND THE GENERAL CONTRACTOR.
- ELECTRICAL CONTRACTOR, BEFORE INSTALLING ANY OF THE WORK, SHALL SEE THAT IT DOES NOT INTERFERE WITH CLEARANCES REQUIRED FOR FINISHED COLUMNS, HUNG CEILINGS, PLASTER, PARTITIONS, WALLS, ETC. AS SHOWN IN THE ARCHITECTURAL DRAWINGS AND DETAILS. IF ANY WORK IS INSTALLED AND IT LATER DEVELOPS THAT SUCH DETAILS OR DESIGN CANNOT BE FOLLOWED, THE CONTRACTOR, AT HIS OWN EXPENSE, SHALL MAKE SUCH CHANGES IN THE WORK AS DIRECTED BY THE ARCHITECT, AS WELL AS TO PERMIT THE INSTALLATION OF THE ARCHITECTURAL WORK AS SHOWN ON THE PLANS AND DETAILS.
- PERFORM TEST REQUIRED BY THE OWNER OR THE ENGINEER IN CONNECTION WITH THE OPERATION OF THE ELECTRICAL SYSTEM IN THE BUILDING.
- ALL TESTS SHALL BE MADE IN ACCORDANCE WITH THE LATEST STANDARD OF THE IEEE AND THE NATIONAL ELECTRICAL CODE.
- MINIMUM CONDUCTOR SIZE SHALL BE #12, 600V INSULATION. MINIMUM SIZE CONDUIT SHALL BE 3/4" EMT FOR INTERIOR USE, AND 3/4" RIGID ALUMINUM FOR EXTERIOR USE. USE TYPE NMIC CABLE COPPER, FOR LIGHTS AND RECEPTACLE CIRCUITS. EXTERIOR FITTINGS SHALL BE CAST BOXES AND COVERS, INTERIOR FITTINGS SHALL BE CAST WHERE EXPOSED ON WALLS. STAMPED BOXES MAY BE USED ABOVE CEILING IN AIR CONDITIONED SPACES, WHERE LAY IN FIXTURES ARE IN USE. USE 1/4" 2 ALLOWED FOR 6" WIDTH.
- CONTRACTOR SHALL INSTALL WIRING AND OTHER CIRCUIT COMPONENTS TO MATCH EQUIPMENT ACTUALLY INSTALLED.
- INSTALL GROUND FAULT RECEPTACLES AT RECEPTACLE LOCATIONS WITHIN 5' OF SINKS OR LAVATORIES, AND AT EXTERIOR LOCATIONS. EXTERIOR RECEPTACLES SHALL ALSO BE WATERPROOF.
- BONDING AND GROUNDING SHALL BE IN ACCORDANCE WITH NFPA 70:250-63, NFR 250-23, 250-71 & 250-72.
- GROUND NEUTRAL IN ACCORDANCE WITH NFPA 70:250-23b.
- FUSES SHALL BE TTT CLASS K5, 250 VOLT, 200,000 AMP INTERRUPTING CAP.
- PROVIDE SERVICES OF A FIRE/SMOKE DETECTION AND ALARM COMPANY TO DESIGN AND INSTALL ALARM SYSTEM TO MEET REQUIREMENTS OF THE STATE FIRE MARSHALL.
- EXTERIOR LIGHTING SHALL BE SHADDED OR INWARDLY DIRECTED IN SUCH A MANNER SO THAT NO DIRECT LIGHTING OR GLARE IS CAST BEYOND THE PROPERTY LINE. THE INTENSITY OF SUCH LIGHTING SHALL NOT EXCEED ONE FOOT CANDLE AS MEASURED AT THE ADJUTING PROPERTY LINE.
- ALL ELECTRICAL, MECHANICAL AND PLUMBING PENETRATING FIRE PARTITIONS SHALL BE FIRE CALKED. PENETRATIONS THROUGH RATED CONSTRUCTION SHALL BE SEALED WITH A MATERIAL CAPABLE OF PREVENTING THE PASSAGE OF FLAMES AND HOT GASES WHEN TESTED IN ACCORDANCE WITH ASTM-E814.

SYMBOL	REF.	HEIGHT	FIXTURE HEIGHT	MANUFACTURER	ORDER NUMBER	LAMPS	NOTES
	A	1-2'-0"	MH CAST CLOSED BACK GIMBAL TRACK FIXTURE - FURNISH WITH BLACK TRACK AND END-FEED CURRENT LIMITER.	CON-TECH LIGHTING	# CTL2235539MH-B FIXTURE # LTB-X-B TRACK # LA-23-R-B-REGX	GE #CMH139 T1U/330G/12 (20153)	ONE HEAD PER CHAIR IN CLINIC AREAS. PROVIDE CURRENT LIMITERS AS INDICATED ON ELECTRICAL PLANS. MOUNT TO UNI-STRUT WITH THREAD ROD.
	A1	1-2'-0"	HALOGEN PAR 38 BLACK TRACK FIXTURE FURNISH WITH BLACK TRACK.	COOPER -HALO	# L1807-PAL #L1980MB # L653-MB TRACK	GE #100 PAR38/RI/5P-10-120V	6 TO 8 LIGHTS PER 1-2'-0" SECTION OF TRACK. VERIFY REQUIRED CONNECTING WITH MANUF. MOUNT TO UNI-STRUT WITH THREAD ROD. PROVIDE DIMMER SWITCH.
	B	CEILING	7" COMPACT FLUOR HORIZONTAL DOWNLIGHT HAZE FINISH AND WHITE TRIM	COOPER -PORTOLIO	# C7242E-7350H		
	B1	CEILING	7" COMPACT FLUOR HORIZONTAL DOWNLIGHT HAZE FINISH AND WHITE TRIM	COOPER -PORTOLIO			PROVIDE DIMMER SWITCH
	C	CEILING	3" LOW VOLTAGE ADJUSTABLE DOWNLIGHT CLEAR FINISH AND WHITE TRIM	COOPER -HALO			
	D	CEILING	2X4 (2) LAMP RECESSED INDIRECT FLUORESCENT TROFFER	CORELITE -CLASS R2			
	D1	CEILING	2X4 (2) LAMP RECESSED INDIRECT FLUORESCENT TROFFER WITH FLANGE KIT	CORELITE -CLASS R2			
	D1F	CEILING	2X4 (2) LAMP RECESSED INDIRECT FLUORESCENT TROFFER WITH FLANGE KIT	CORELITE -CLASS R2			
	D6	CEILING	2X4 (3) LAMP RECESSED INDIRECT FLUORESCENT TROFFER	CORELITE -CLASS R2			
	D6F	CEILING	2X4 (3) LAMP RECESSED INDIRECT FLUORESCENT TROFFER WITH FLANGE KIT	CORELITE -CLASS R2			
	E	CEILING	1X4 WRAP SURFACE MOUNT WITH ACRYLIC LENSE FLUORESCENT	METALLIX -W-SERIES			
	G	8'-3" - 9'-0"	LINEAR FLUORESCENT PENDANT MOUNTED UPLIGHT	FOCAL POINT -EVOLUTION I			T-BAR, HARD-LID, OR DROP CEILING CONDITION. VERIFY CABLE SUSPENSION LENGTH COR.
	H	7'-0"	VAPOR-TITE INCANDESCENT WALL/CEILING FIXTURE	COOPER -LIMARK			CEILING MOUNT FIXTURE TO BE MOUNTED ON WALL IN RESTROOMS. RECESS 1-BOX.
	H2	WALL	WALL MOUNT LINEAR FLUORESCENT	LIGHTOLIER -BRISA CURVE			WALL MOUNTED FIXTURE AT MAKE-UP BAR
	J3	CEILING	12" METAL HALIDE HIGH-BAY WITH ELECTRONIC BALLAST	SPECTRUM -LUMEN MAX EXT OF SERIES			
	K1	7'-0" - 8'-0"	7.5" INCANDESCENT DECORATIVE PENDANT	PRISMA -OPTALUM			FOR USE AT RECEPTION AND CONFERENCE ROOM. PROVIDE DIMMER SWITCH IN CONF. ROOM ONLY. VERIFY FIXTURE WITH OWNER.
	E1	CEILING	EXISTING 2X4 FIXTURE TO BE RELOCATED AND REUSED				CLEAN AND RELAM FIXTURE.
	E2	CEILING	EXISTING 2X2 FIXTURE TO BE RELOCATED AND REUSED				CLEAN AND RELAM FIXTURE.



**DAMMON ENGINEERING, INC.**  
 CHIEF ENGINEER  
 EMLETT DAMMON, P.E.  
 CHIEF ARCHITECT  
 ROBERT WILTSE

1095 FLORIDA AVENUE  
 SLIDELL, LA 70458  
 OFFICE: 985-649-5832  
 FAX: 985-641-5950  
 WWW.DAMMONENGINEERING.COM  
 EMAIL: DAMMONENG@BELL-SOUTH.NET  
 ARCHITECTURE  
 ENGINEERING  
 STUDIES  
 PLANNING  
 INVESTIGATION  
 EXPERT WITNESS

PAUL MITCHELL  
 SCHOOL  
 3321 HESSMIER AVE  
 METAIRIE, LA  
 70002

**ELECTRICAL NOTES**

REV:  
 SCALE: AS NOTED  
 JOB#: 2051  
 DATE: 01-04-10  
 SHEET