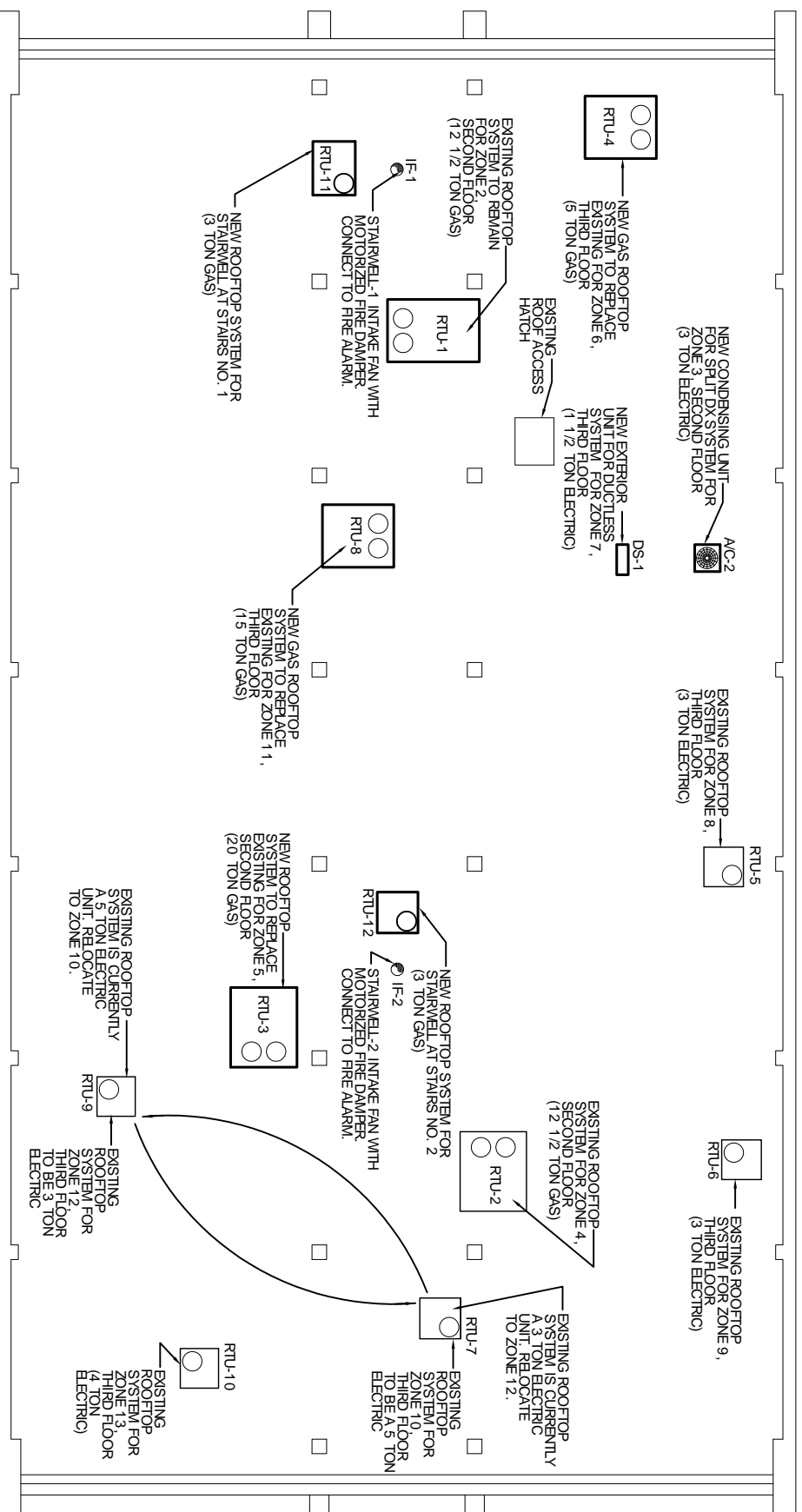


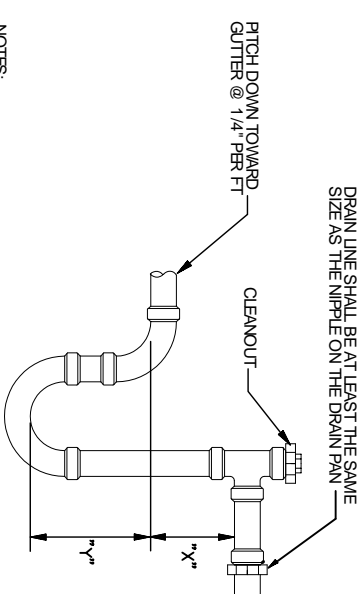
EXISTING CONDENSING UNIT FOR ZONE 1, FIRST FLOOR LOCATED BELOW, (5 TON GAS), SEE SHEET M-1.

AC-1

NOTE
RESECURE ALL EXISTING UNITS TO ROOF CURBS.

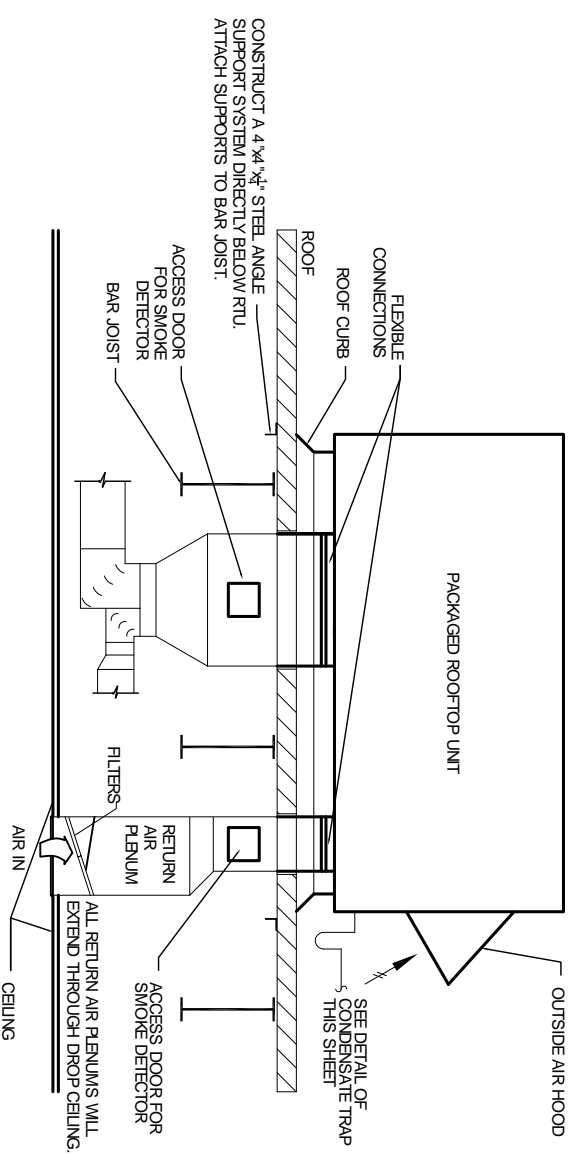


ROOF MECHANICAL EQUIPMENT PLAN
SCALE 1/8" = 1'

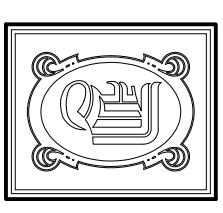


NOTES:
LENGTHS "X" AND "Y" SHALL BE DETERMINED BY ROOFTOP UNIT EQUIPMENT BASED ON TOTAL STATIC PRESSURE
"X" AND "Y" SHALL BE EQUAL TO MINIMUM 1/2 TOTAL UNIT STATIC PRESSURE
ALL CONDENSATE PIPING SHALL BE SLOPED AT 1/4" PER FOOT

CONDENSATE TRAP DETAIL
NOT TO SCALE



TYPICAL ROOFTOP UNIT DETAIL
NOT TO SCALE



DAMMON ENGINEERING, INC.

CHIEF ENGINEER
EMMETT DAMMON, P. E.
CHIEF ARCHITECT
ROBERT WILTSE

1095 FLORIDA AVENUE
SUITE 111, LA 70458
OFFICE: 985-649-5932
FAX: 985-641-5950

WWW.DAMMONENGINEERING.COM
EMAIL: DAMMONENG@BELL.SOUTH.NET

ARCHITECTURE
ENGINEERING
STUDIES
PLANNING
INVESTIGATION
EXPERT WITNESS

PAUL MITCHELL
SCHOOL
3321 HESSMER AVE
METAIRIE, LA
70002

ROOF MECHANICAL EQUIPMENT PLAN

REV:	
SCALE:	AS NOTED
JOB#:	2051
DATE:	02-05-10
SHEET	

M-6

OF