

DAMMON
ENGINEERING, INC.

CHIEF ENGINEER
EMMETT
DAMMON, P.E.
CHIEF ARCHITECT
ROBERT
WILTSE

1095 FLORIDA AVENUE
SLIDELL, LA. 70458
OFFICE: 985-649-5632
FAX: 985-641-5950

WEBSITE:
WWW.DAMMONENGINEERING.COM
EMAIL:
DAMMONENG@DELTAOUTLINE.NET

ARCHITECTURE
ENGINEERING
STUDIES
PLANNING
INVESTIGATION
EXPERT WITNESS

PAUL MITCHELL
SCHOOL
3321 HESSMER AVE
METAIRIE LA
70002

HOT WATER &
COLD WATER
LINE RISERS

REV:

SCALE: AS NOTED

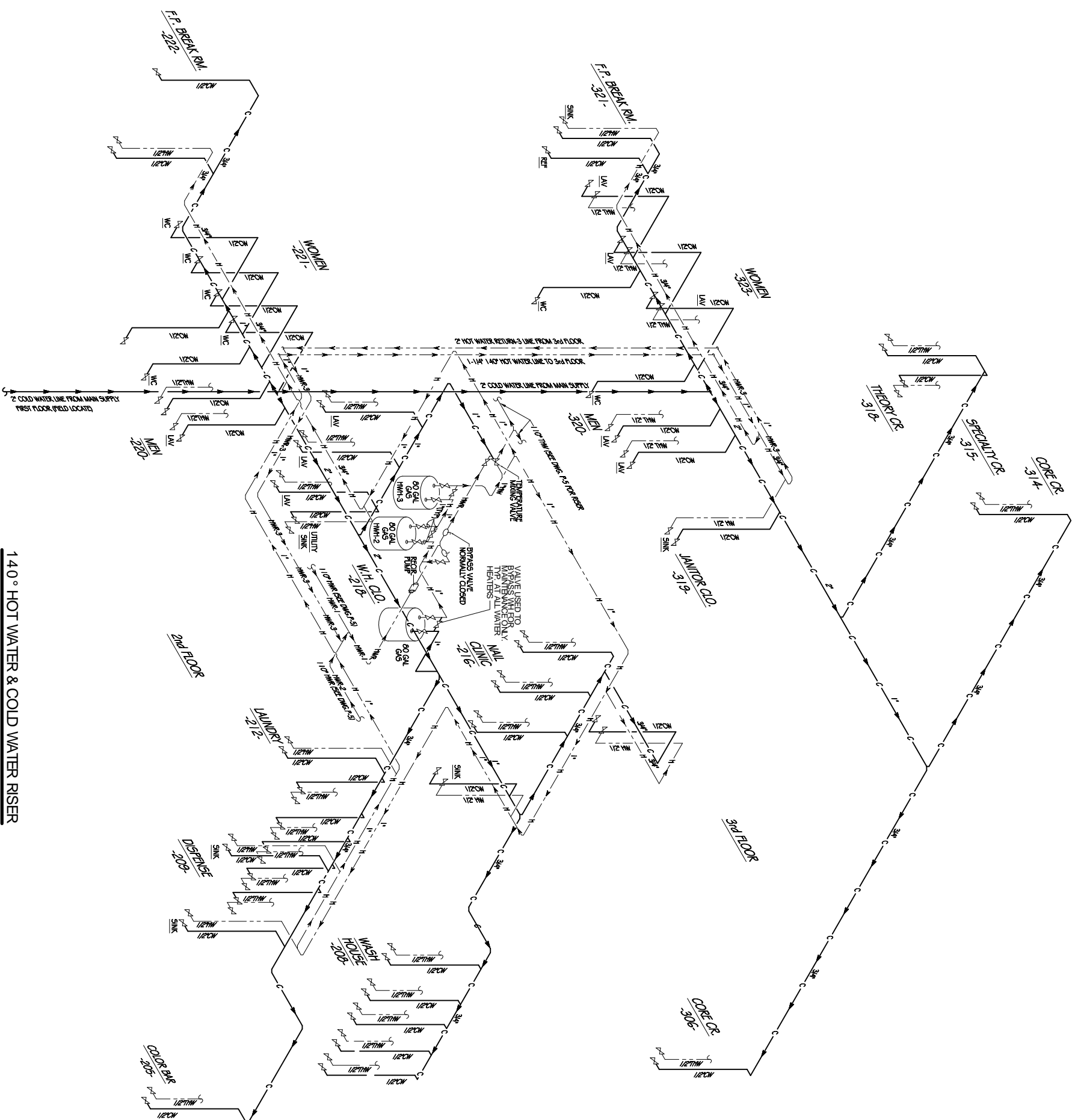
JOB#: 2051

DATE: 01-04-10

SHEET

P-6

OF



140° HOT WATER & COLD WATER RISER
SCALE: N.T.S.

(SEE DWG. P-5 FOR 110° TEMP. HOT WATER RISER)