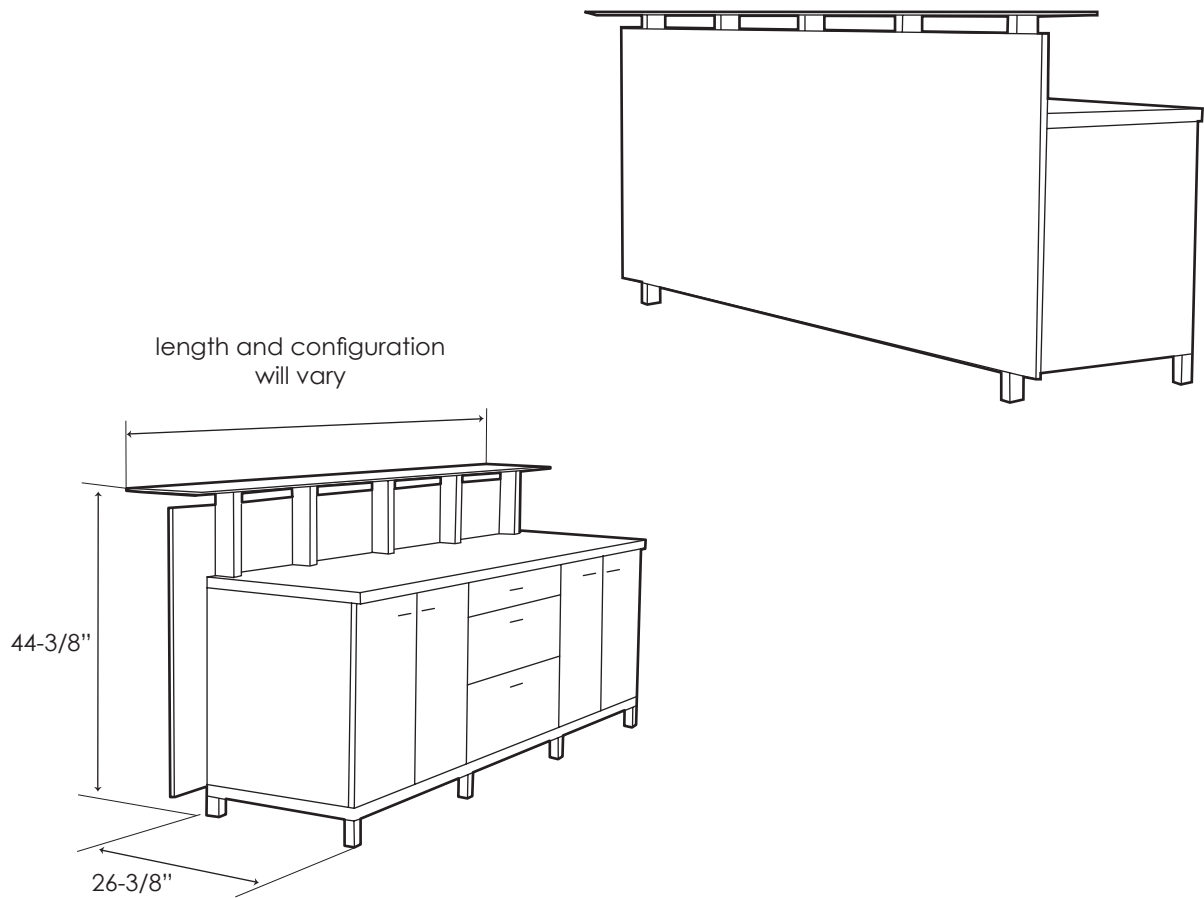


wadsworth

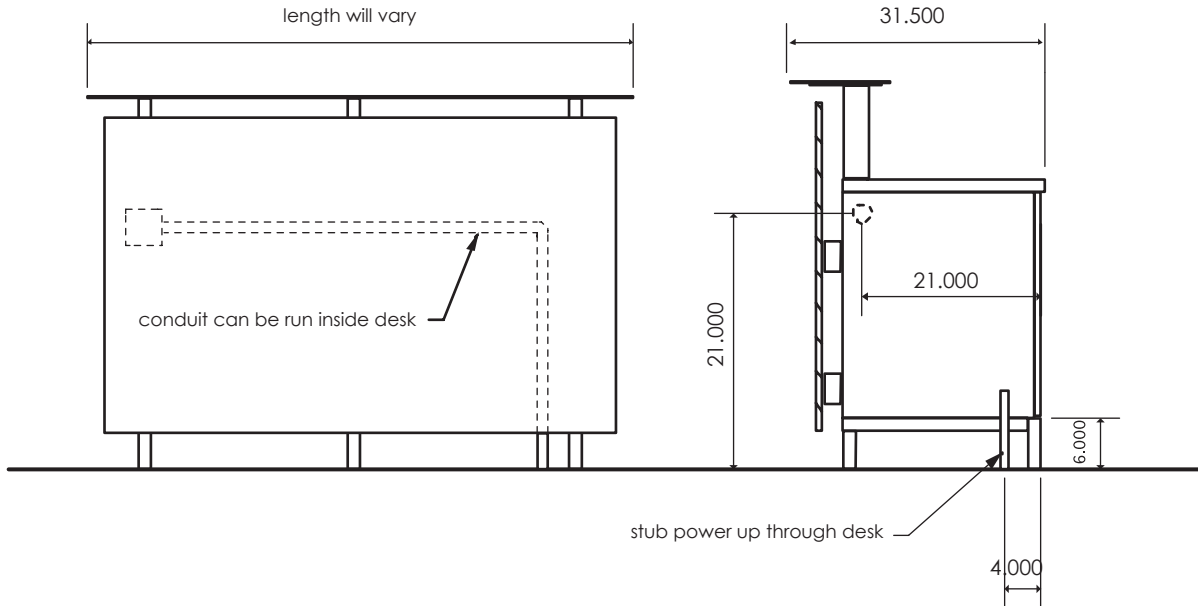
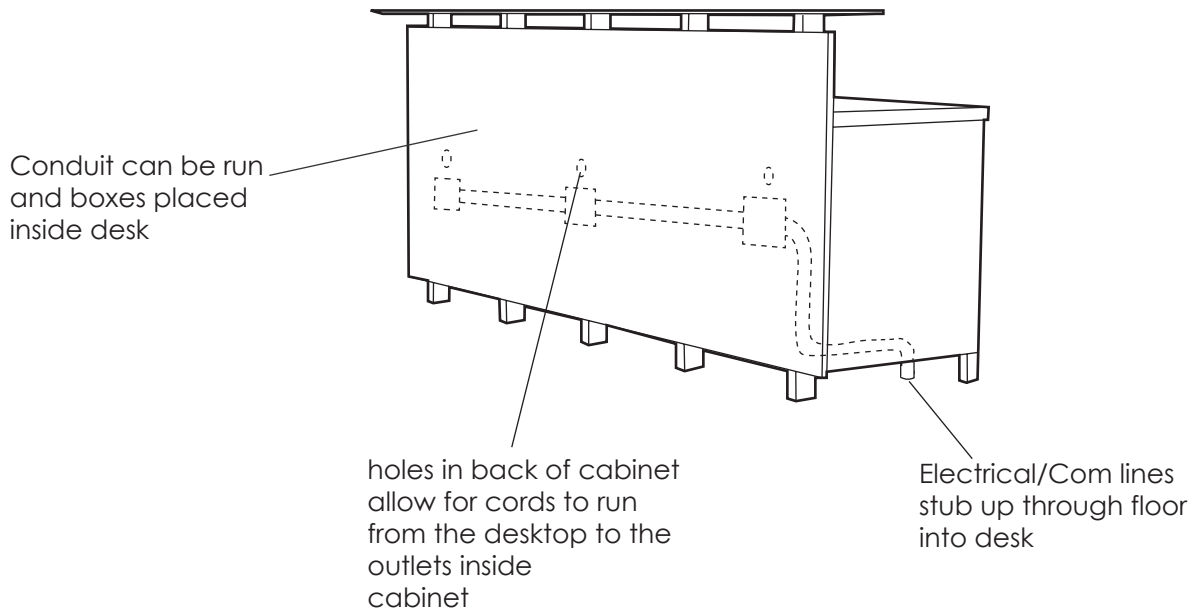
Product information for the **Service desk**



The following parts are included with the unit:

1. Welded steel base frame
2. Cabinets
3. Laminate counter top
4. Stainless ledge
5. Laminate facade
6. Welded ledge supports
7. Hardware

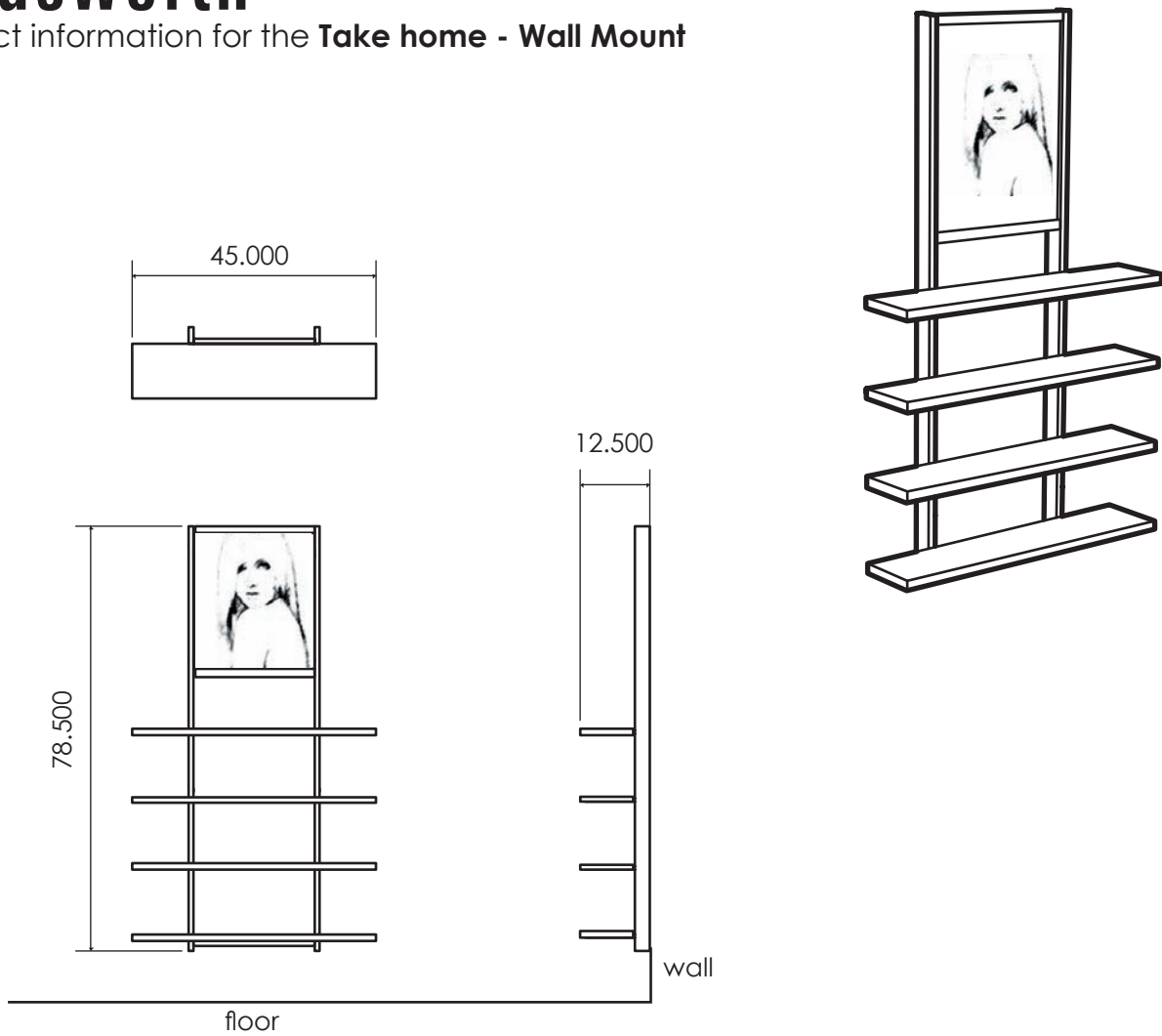
Wiring cut sheet for the **Service Desk**



1. Electrical and communication lines should be stubbed up from floor at a point 4 inches from where the front of the desk will sit. See plans for location of desk. After desk has been installed conduit can be run inside desk and boxes placed at the appropriate locations. **All electrical & communication components installed by contractor.**

wadsworth

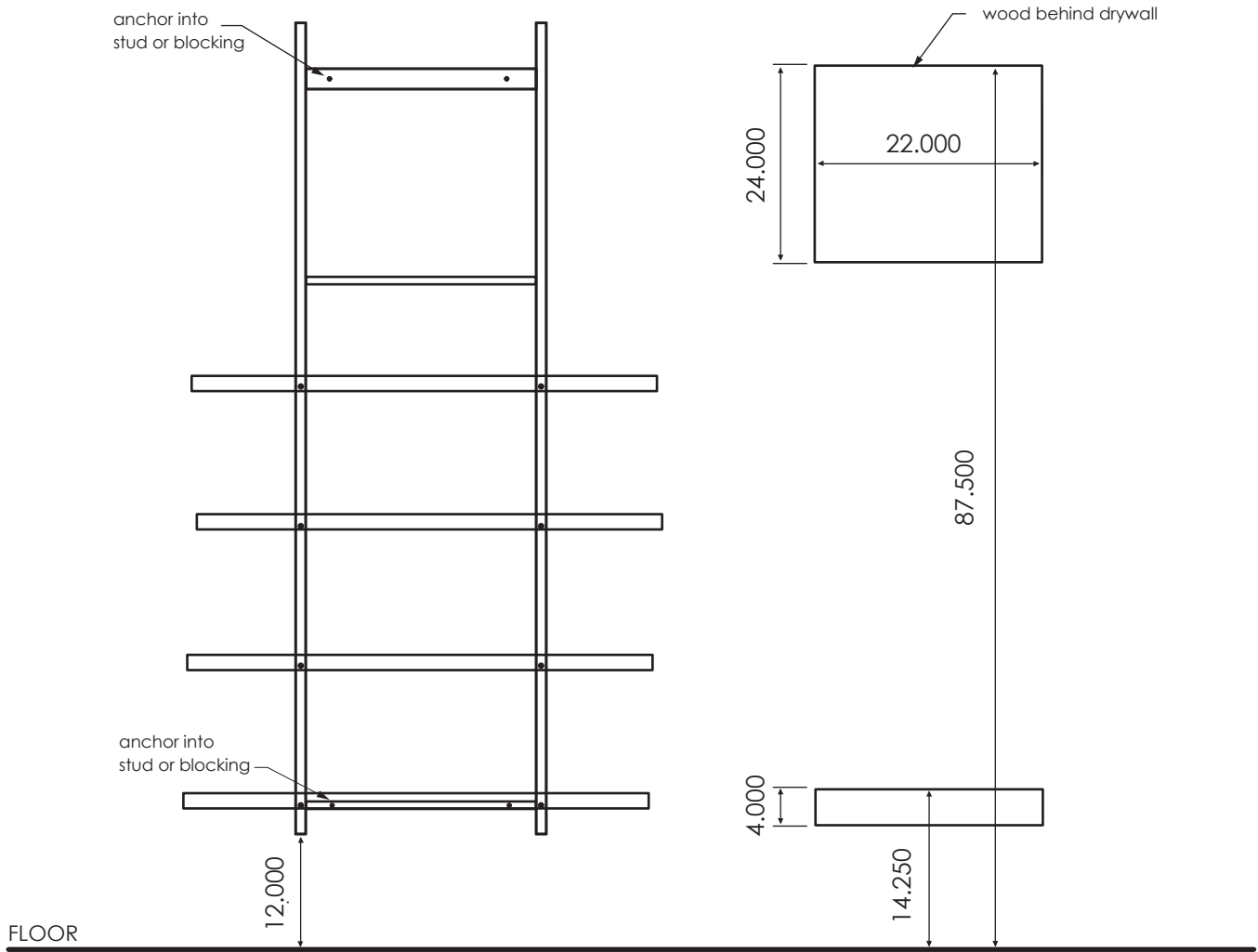
Product information for the **Take home - Wall Mount**



The following parts are included with the unit:

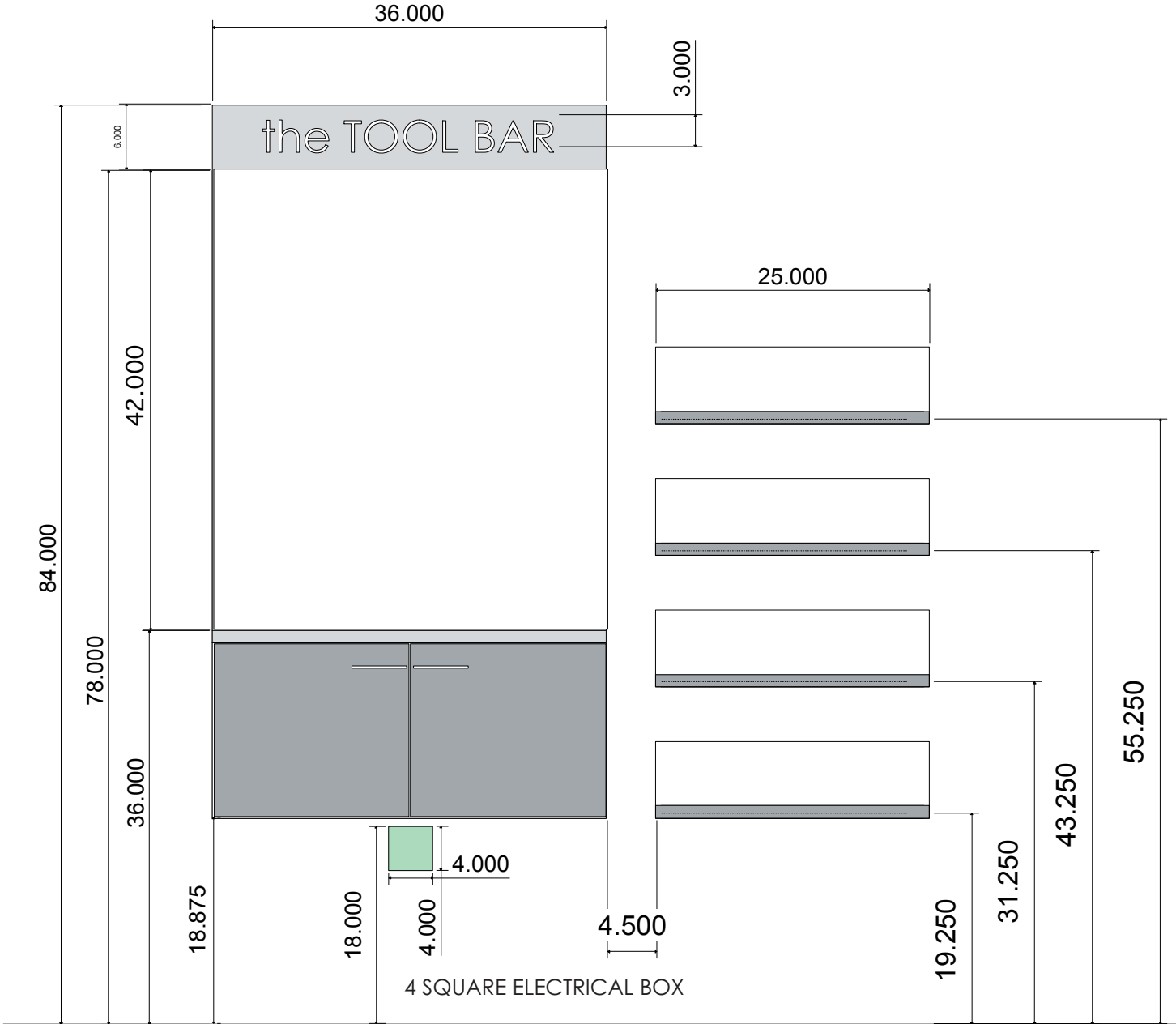
1. Welded steel base frame (1)
2. Laminate shelves (4)
3. Image frame (1)

Blocking Locations for the **Take Home - Wall Mount**



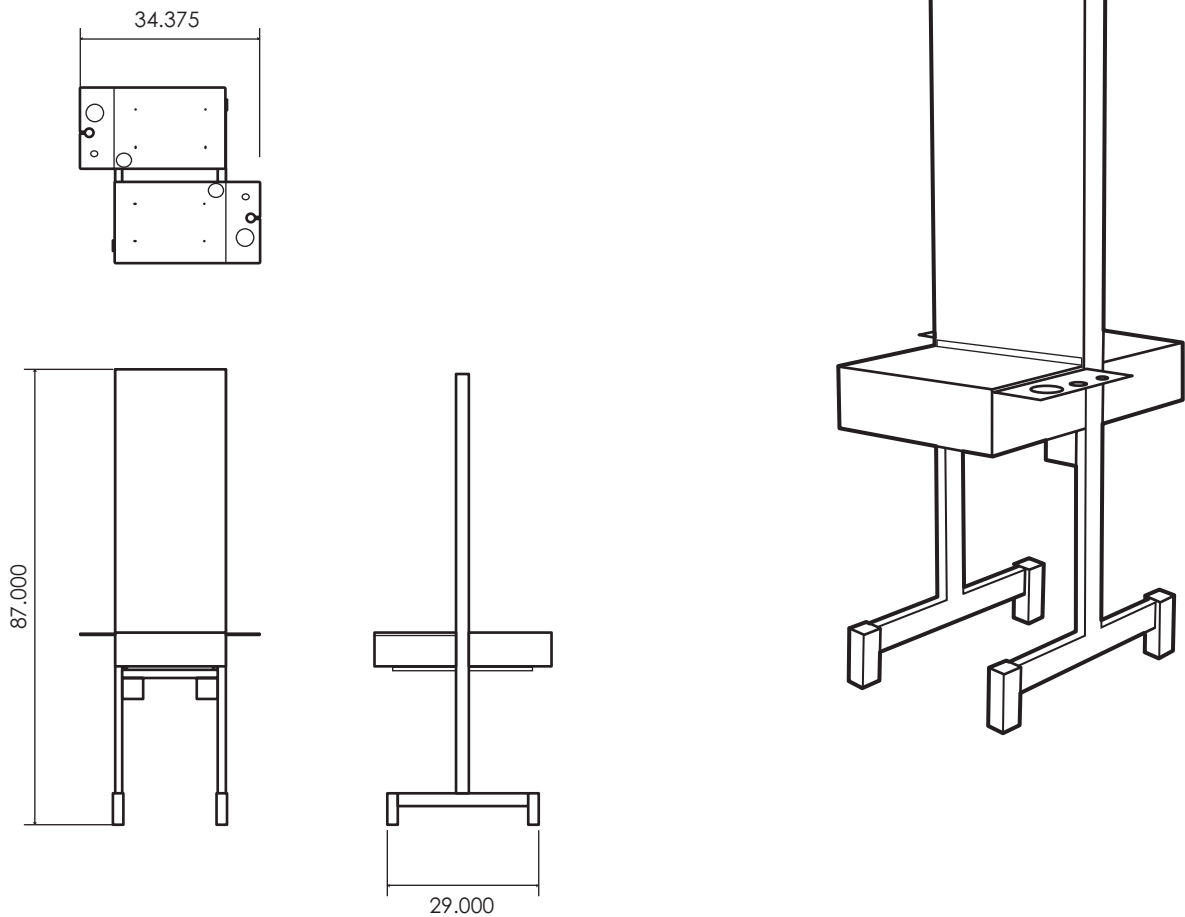
1. Wood blocking behind drywall is required for hanging the unit. It should be positioned as shown above at the location of each unit. See plans for layout of units.
2. **Wadsworth Design must be notified by contractor**, in situations where the Wall Mount unit will be hung on anything other than drywall with proper blocking, prior to the time of installation.

Electrical cut sheet for the TOOL BAR



wadsworth

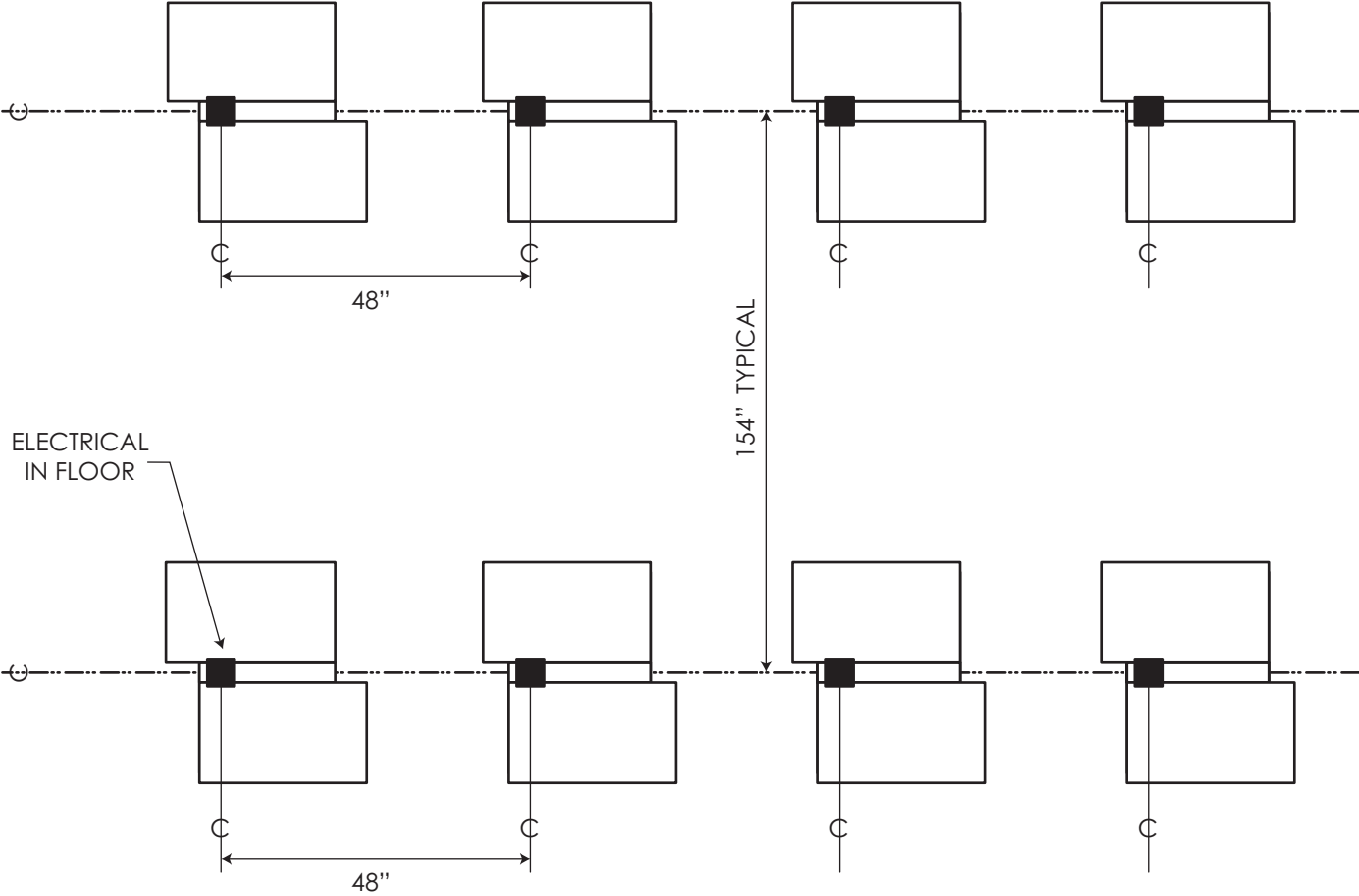
Product information for the Two Station Tower



The following parts are included with the unit:

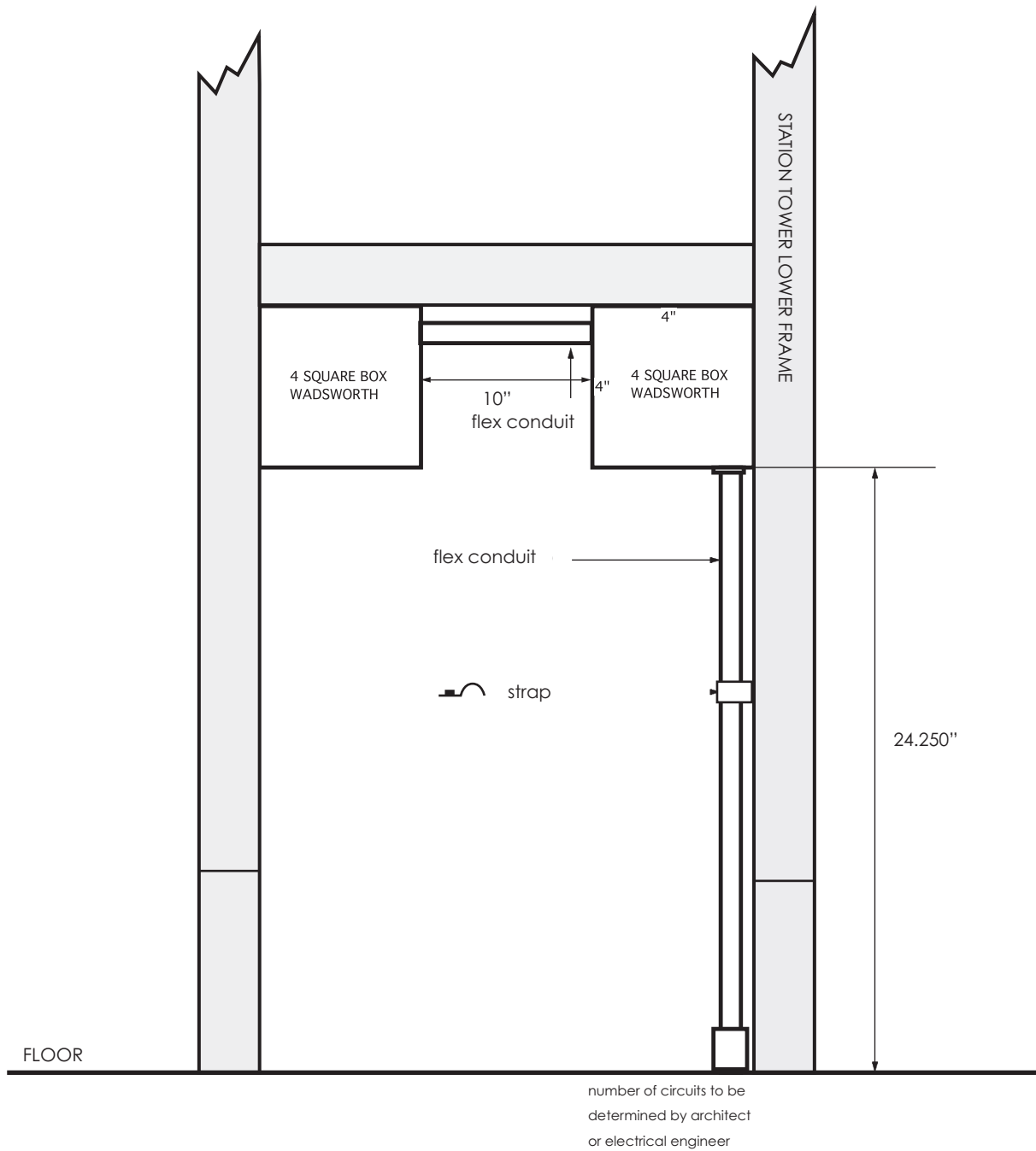
1. Welded steel frame (1)
2. Drawer boxes (2)
3. Mirrors (2)
4. Drawer box hardware
5. Four square electrical box (2)

Electrical locations for the Two Station Tower



- 1. Power locations for stations should be located on 48" centers. Rows of stations should be located on 154" centers.

Wiring cut sheet for the Two Station Tower

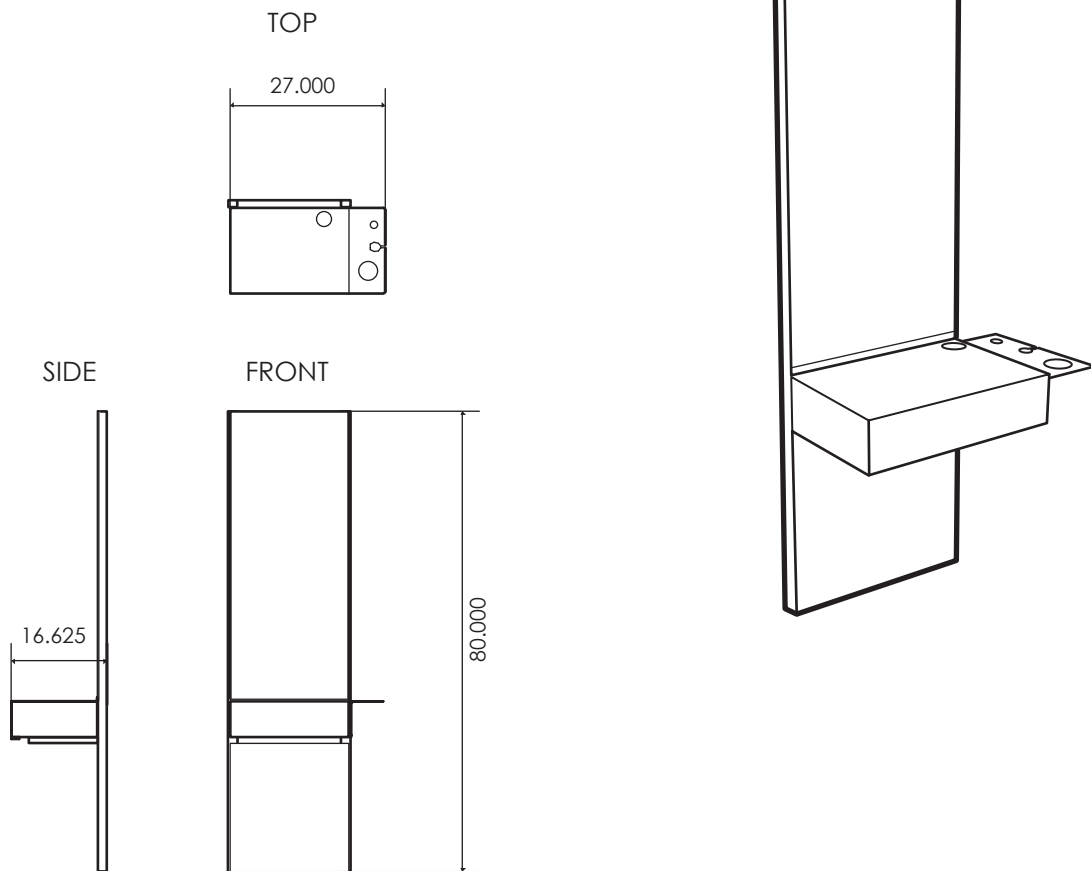


1. The FOUR SQUARE ELECTRICAL BOX is the ONLY component supplied by Wadsworth Design. All other components must be supplied and installed by contractors.

2. The four square electrical box is welded into frame by Wadsworth Design

wadsworth

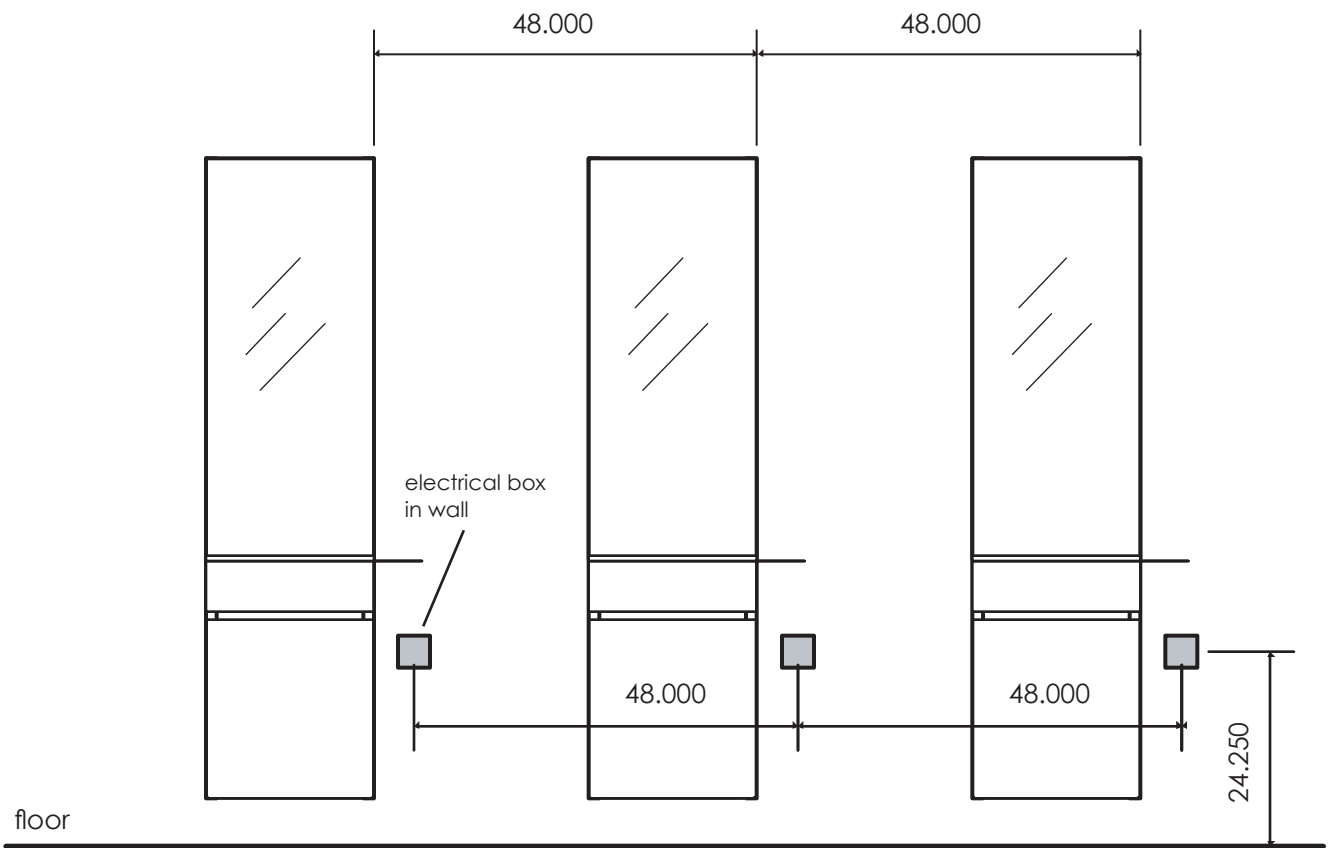
Product information for the **Wall Station**



The following parts are included with the unit:

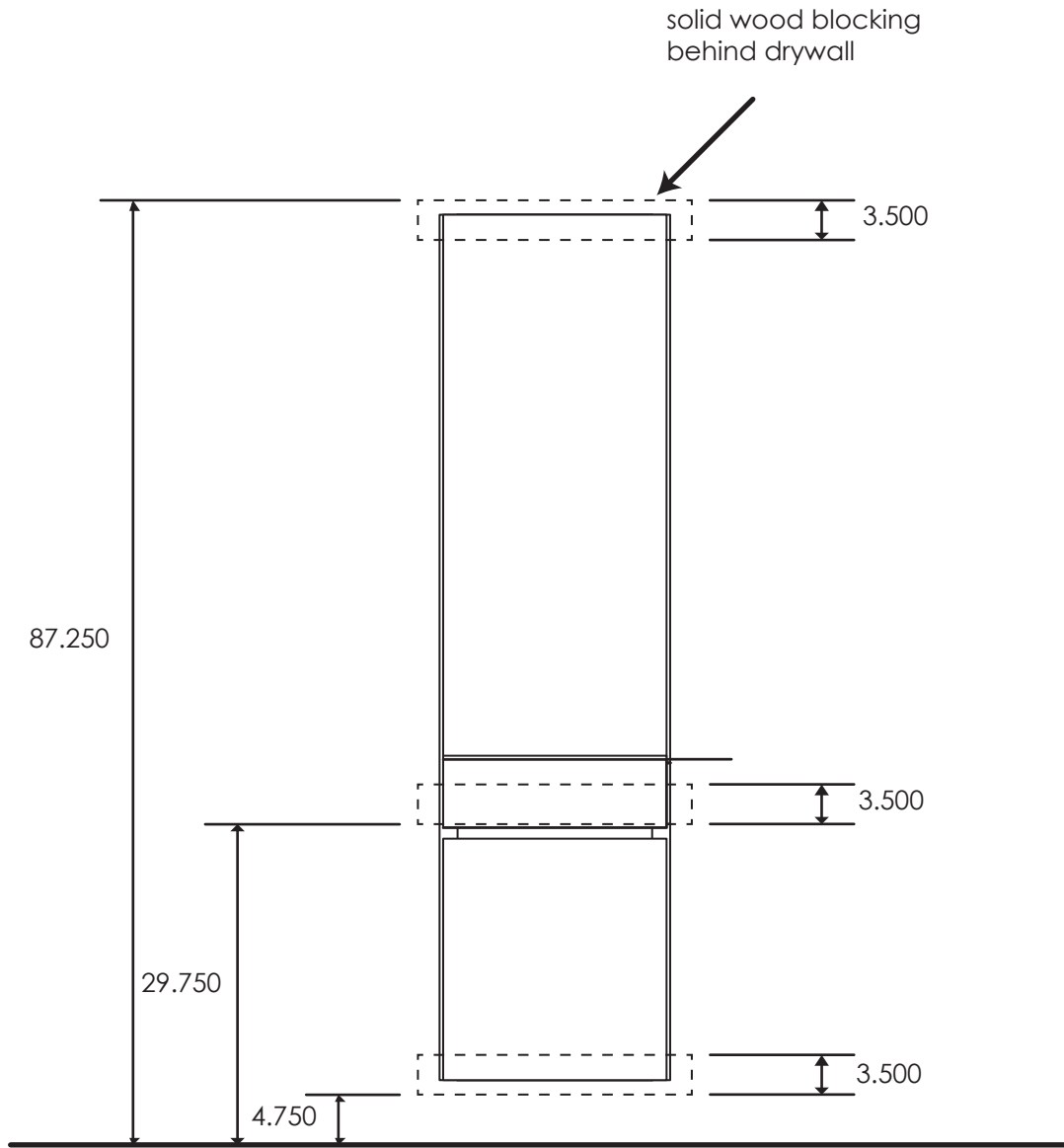
1. Welded steel frame (1)
2. Stainless Drawer box (1)
3. Stainless kick panel (1)
4. Mirror (1)
5. Cabinet Hardware

Electrical locations for the **Wall Station**



1. Electrical boxes should be placed at 48 inches on center with one box per Wall Station. They should be located 24.25 inches from the floor to the center of the box. See plans for layout of stations.
2. An electrical components and connections are installed by the contractor.
3. Electrical does not connect to station in any way.

Blocking locations for the **Wall Station**

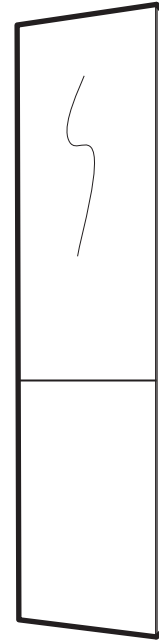
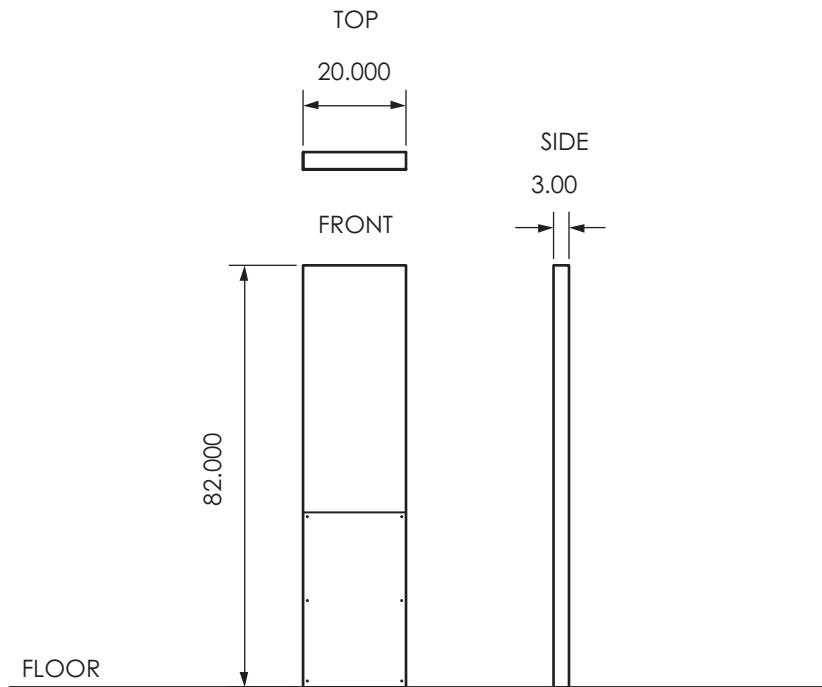


1. Wood blocking behind the drywall is required for hanging the wall station. It should be positioned at the location of each wall station. See plans for layout of stations

1. **Wadsworth Design must be notified by contractor**, in situations where wall stations will be hung on anything other than drywall with proper backing, prior to the time of installation

wadsworth

Product information for the Monolith Tower

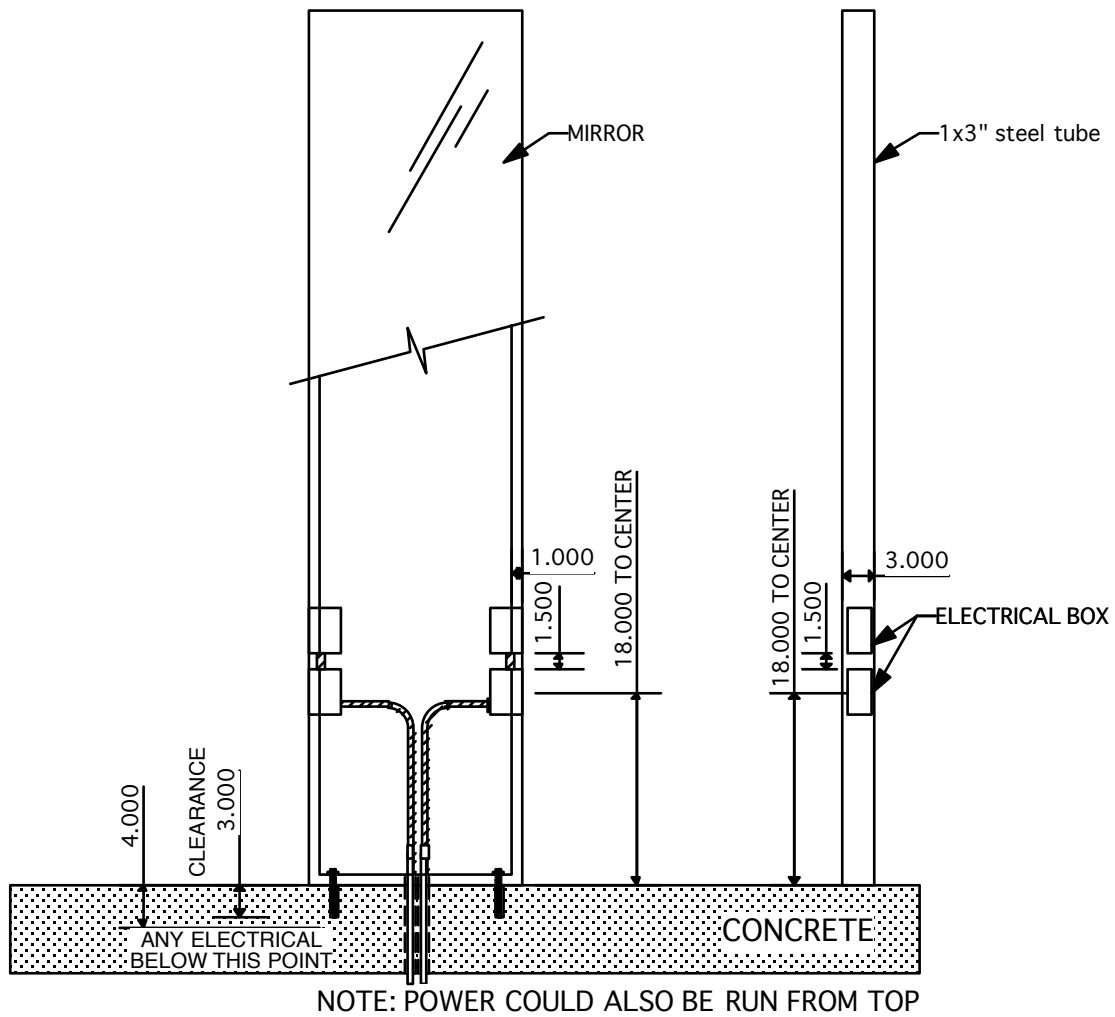


The following parts are included with the unit:

1. Welded steel frame (1)
2. Mirror (2)
3. Kick panel (on some models) (2)
4. Cabinet Hardware

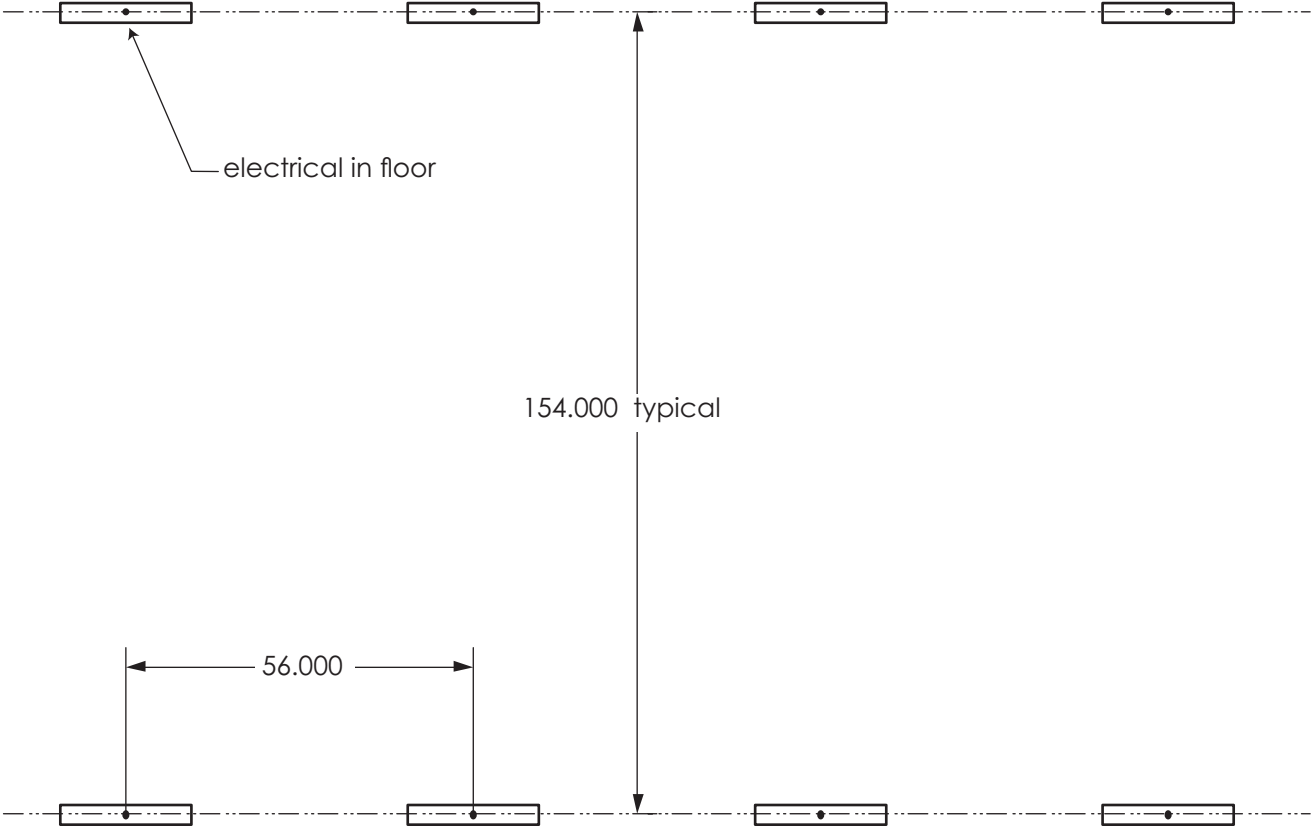
Wiring diagram for the Monolith Station

ELECTRICAL WIRING DIAGRAM



1. FOUR ELECTRICAL BOXES are the ONLY component supplied by Wadsworth Design. All other components must be supplied and installed by contractors. Electrical box is welded into frame by Wadsworth.

Electrical locations for the Monolith Station

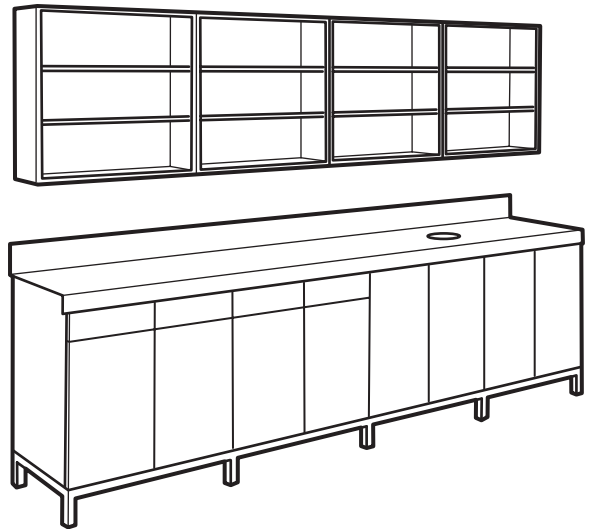


1. Power locations for stations should be located on 56" centers. Rows of stations should be located on 154" centers.

Angled Monoliths do not work with work cart. Inline is highly recommended.

wadsworth

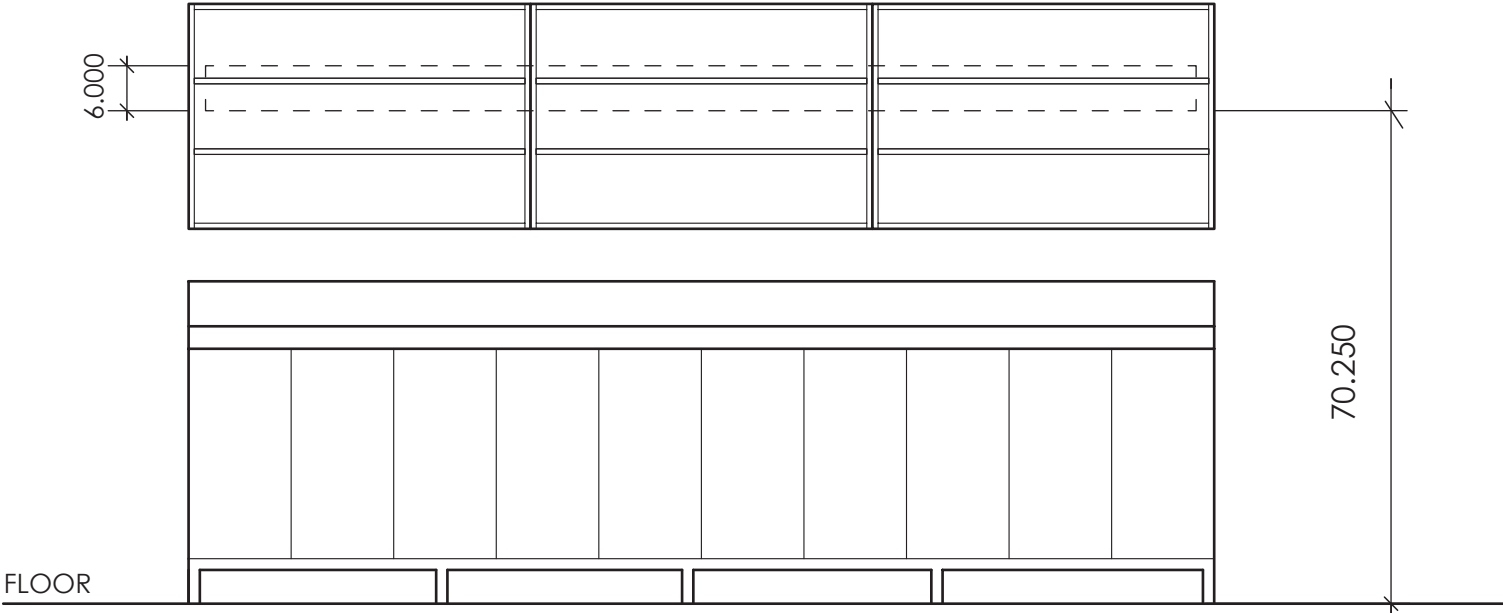
Product information for the **Color Bar Wall Mount**



The following parts are included with the unit:

1. Metal Base Frame
2. Cabinets (Lower & Upper)
3. Stainless Counter Top
4. Trash Can
5. Cabinet Hardware

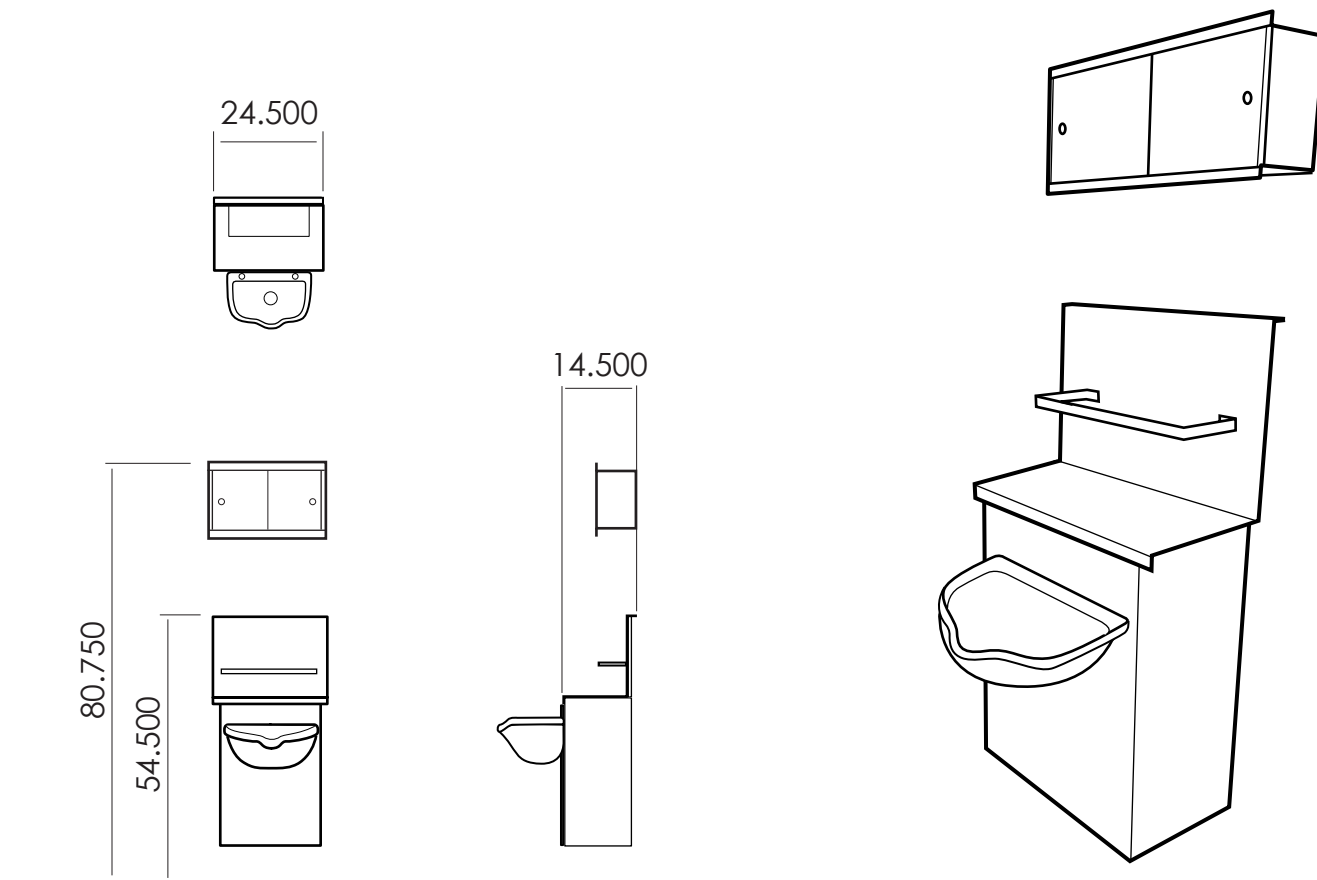
Blocking Cut Sheet for the **Color Bar Wall Mount**



1. Wood blocking should be 3/4 plywood or 2 x Lumber.

wadsworth

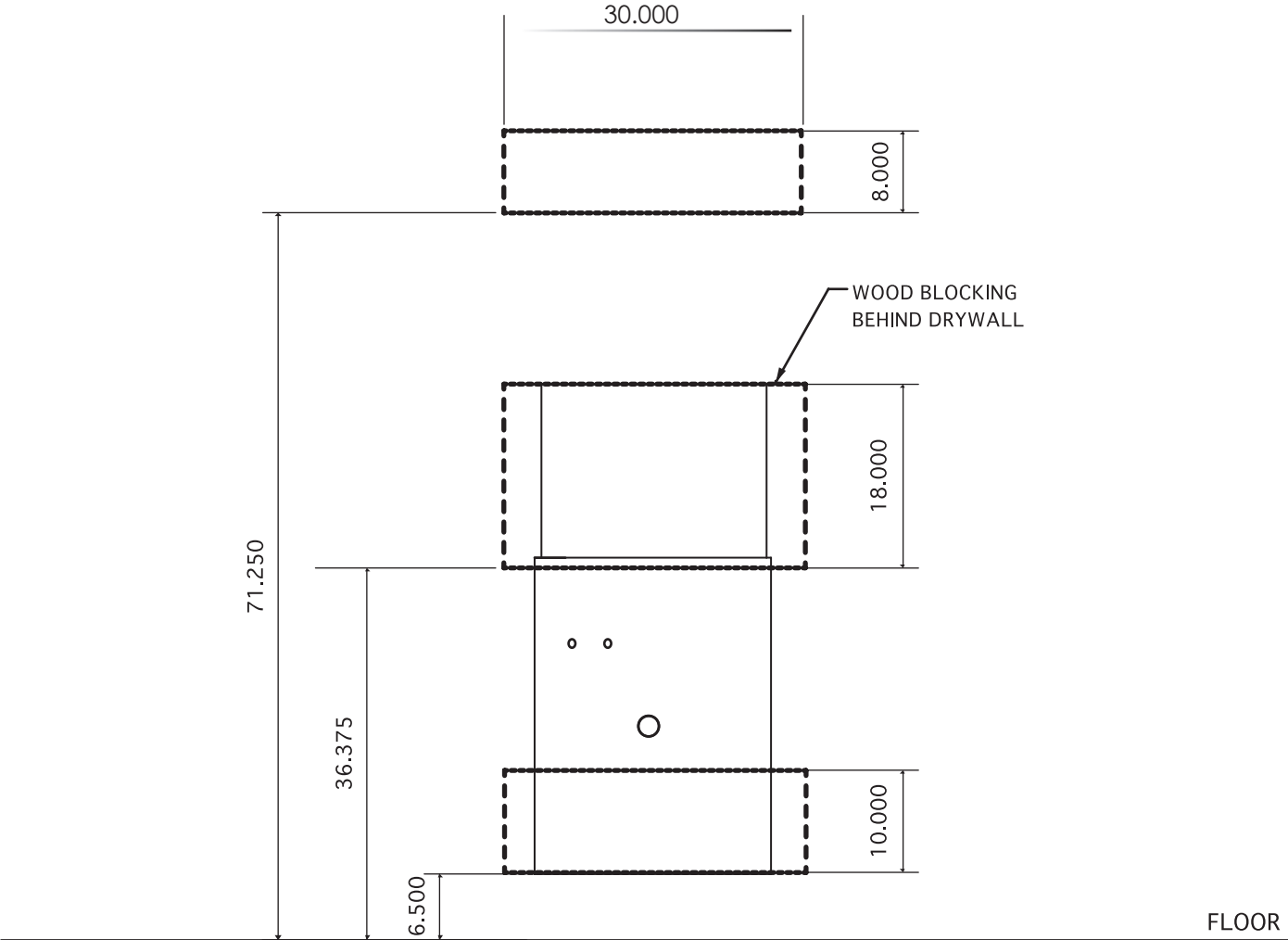
Product information for the **Backbar - Single Wall Mount**



The following parts are included with the unit:

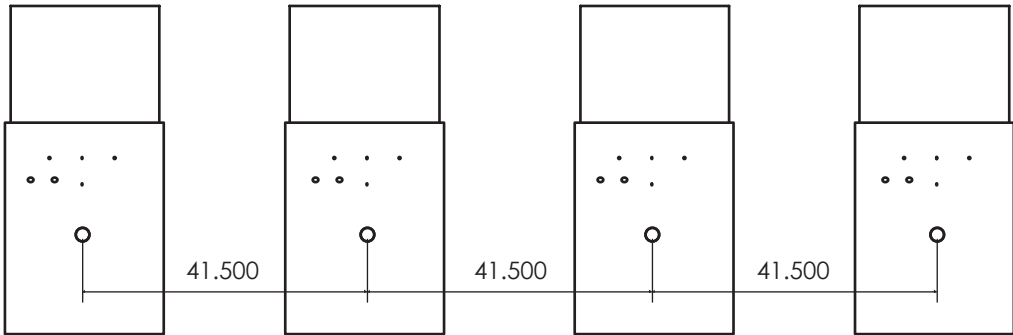
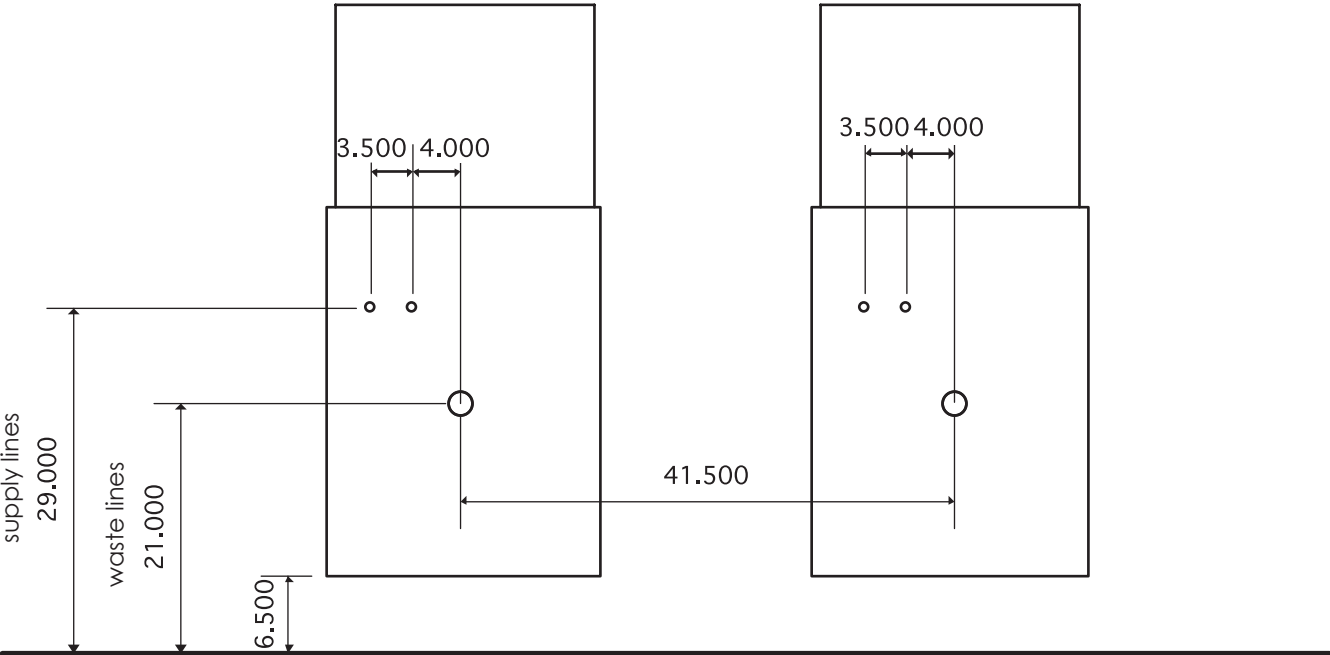
1. Stainless cabinet (1)
2. Stainless top (1)
3. Shampoo holder (1)
4. Shampoo sink - Marble Products model #2000 (1)
5. Faucet - Takara Belmont model #1014U (1)
6. Hair trap (1)
7. Upper cabinet (1)
8. Acrylic doors (2)
9. Cabinet Hardware

Blocking location for the **Backbar - Single Wall Mount**



1. Blocking location is shown in relation to cabinet. See plans for location of cabinet in room
2. **Wadsworth Design must be notified by the contractor**, prior to the time of installation, in situations where the Backbars will be hung on anything other than drywall with the proper blocking.

Plumbing locations for the **Backbar - Single Wall Mount**



1. Plumbing location is shown in relation to cabinet. See plans for location of cabinet in room

Cut sheet for the sink included with the **Backbar - Single Wall Mount**

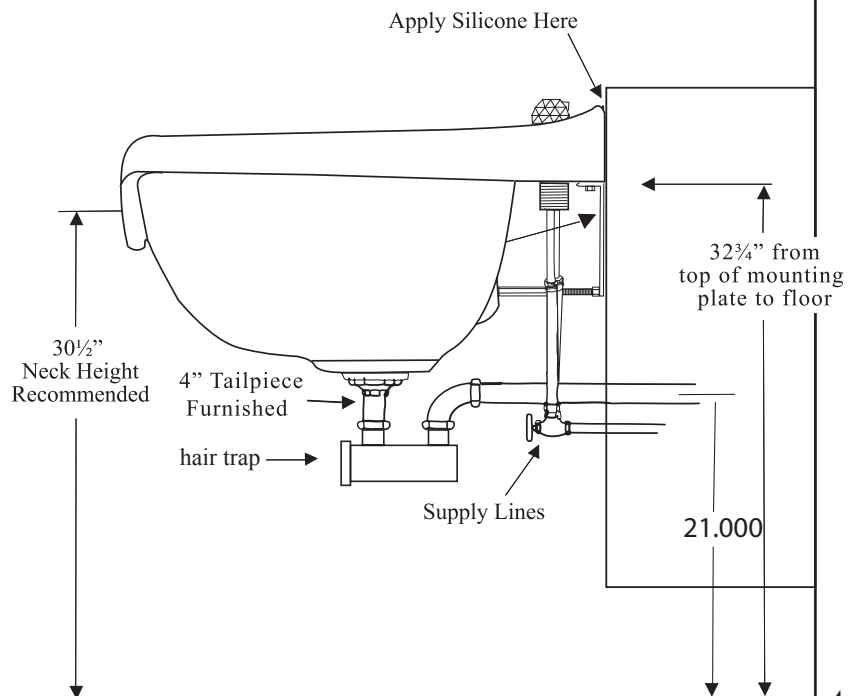
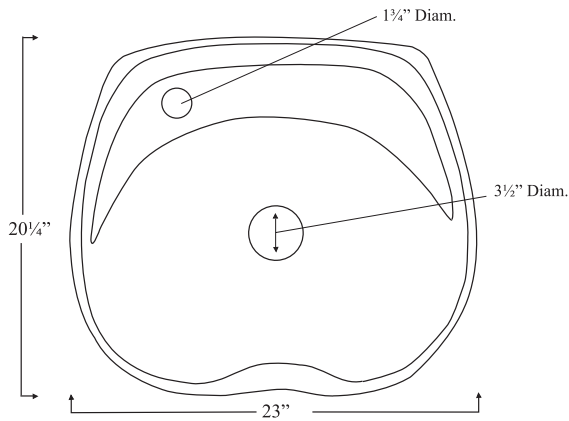
For certification information on this product go <http://pld.iampo.org> and look up file # 1877

Rough In Specifications for Model #2000

Important Note to Installer

Consult with owner before mounting bowl in order to determine suitable neckrest height. Recommended neckrest height for Model #2000 Shampoo Bowl is 30½". However because of various types of chairs that can be used with this bowl, it may be necessary to raise or lower the mounting height of the bowl. It is important to consider the chair/bowl relationship before mounting to the wall.

When installing in wet styling booths or cabinets refer to the manufacturer's specification sheet to determine how far the waste plumbing and water supply lines should extend from the wall to outer face of cabinet. The depth of the cabinet will determine this specification.



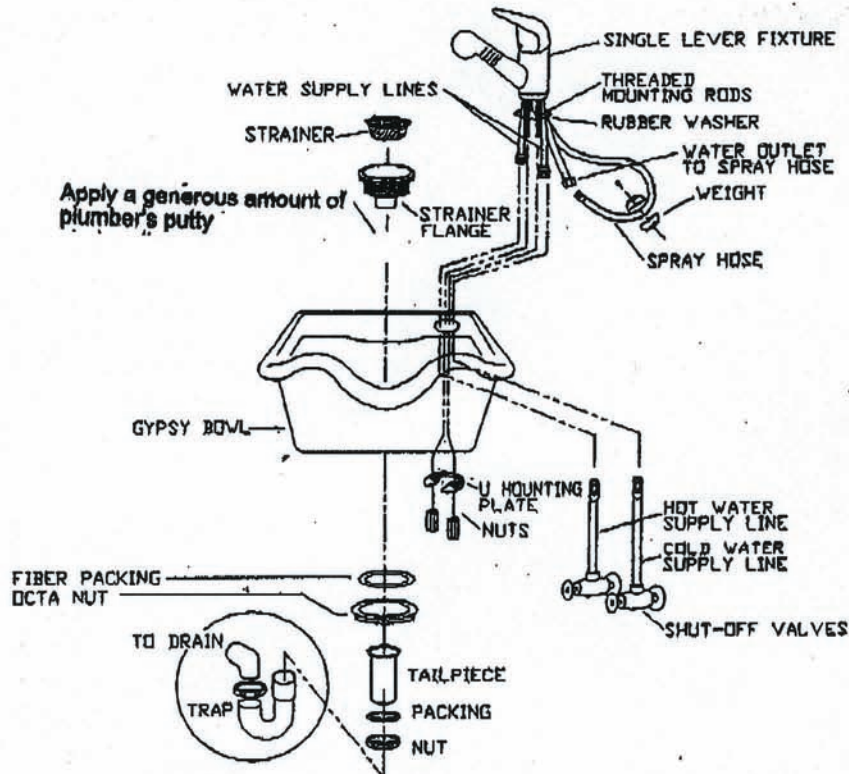
MARBLE PRODUCTS
Wichita, Kansas

Cut sheet for the faucet included with the **Backbar - Single Wall Mount**

For certification information on this product go <http://pld.iampo.org> and look up file # 3605

1014U FIXTURE INSTALLATION INSTRUCTIONS

PULL-OUT SINGLE LEVER SHAMPOO FIXTURE w/BUILT-IN VACUUM BREAKER



FAUCET INSTALLATION

Insert fixture through top of bowl with the rubber washer making contact with the bowl surface. Feed all hoses through hole in bowl.

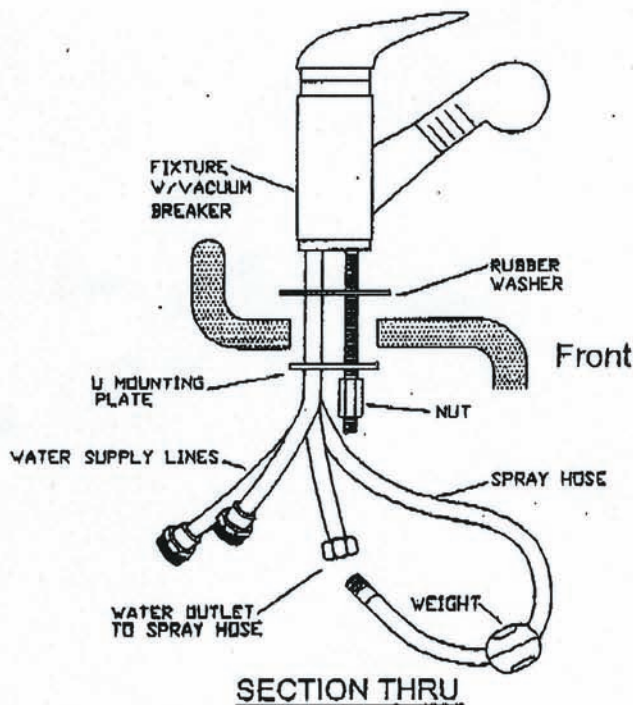
From underneath slide u-mounting plate onto threaded mounting rods and fasten nuts to rods. Tighten nuts snug up against u-mounting plate.

Attach end of spray hose to the water supply outlet on the fixture.

Note: Secure the single lever faucet hose to bowl prior to mounting.

Attach hot and cold water supply lines to the faucet.

Attach the weight to the spray hose near the bottom of the loop.

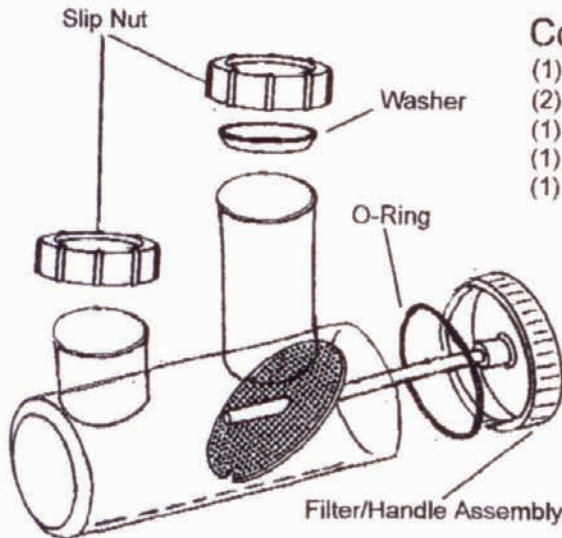


Cut sheet for the hair trap included with the **Backbar - Single Wall Mount**

For certification information on this product go <http://pld.iampo.org> and look up file # 4994

Installation Instructions

No. 1701 "CATCH-ALL" HAIR TRAP



Contents

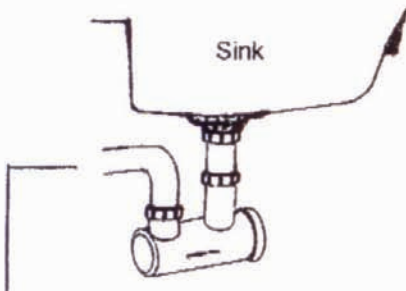
- (1) - Hair Trap
- (2) - Slip Nuts
- (1) - 1½" Washer
- (1) - Filter/Handle Assembly
- (1) - O-Ring

To Install

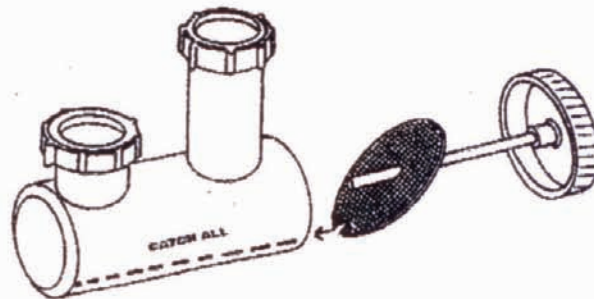
1. Place slip nut and washer over 1½" tail piece.
2. Place slip nut over flange of elbow pipe (not included).
3. Install Hair Trap and tighten slip nuts.
4. Run water and check for leaks.

To Clean

1. Unscrew filter/handle assembly.
2. Remove all debris.
3. Make sure o-ring is in position in the handle cap.
4. Replace by aligning slot in filter over the guide inside hair trap and tighten firmly by hand.
5. Run water and check for leaks.



One-piece flanged elbow pipe required for installation

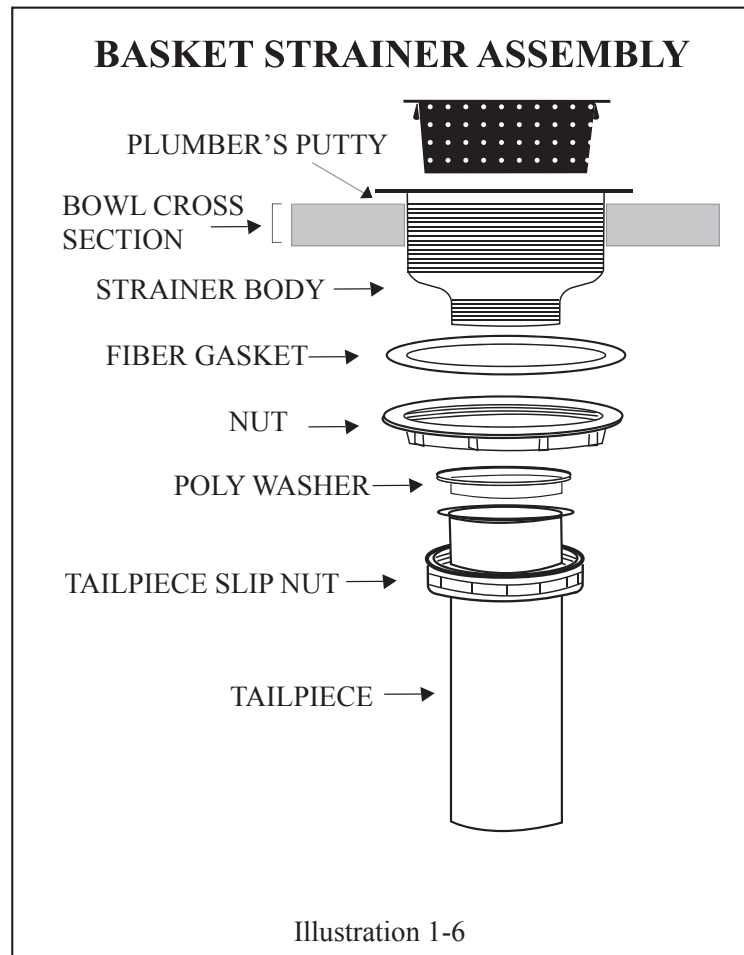


MP1701

Cut sheet for the strainer included with the **Backbar - Single Wall Mount**

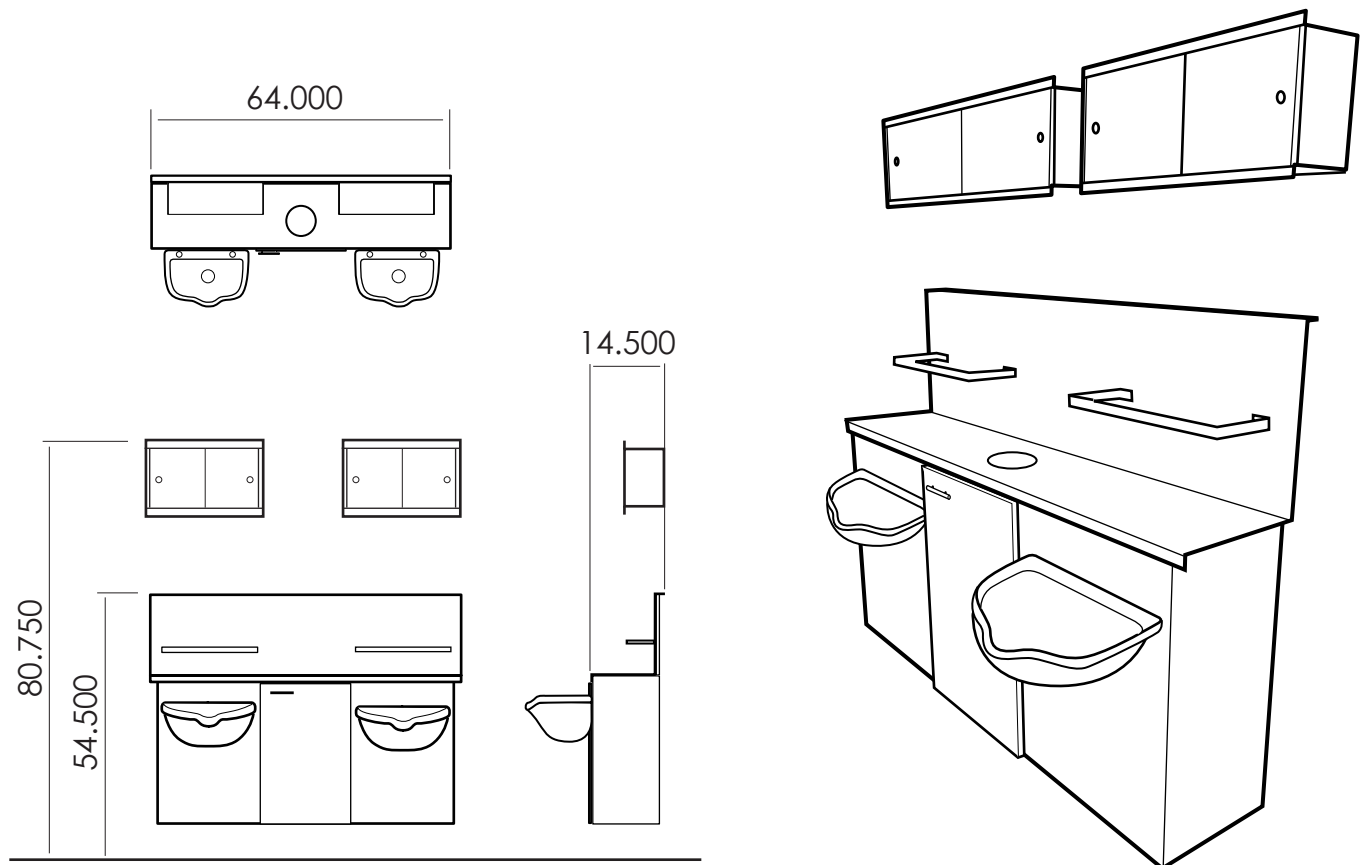
BASKET STRAINER INSTALLATION INSTRUCTIONS

1. Remove all components from strainer body.
2. Apply a generous amount of plumber's putty to the underside of strainer flange.
3. Insert strainer body through drain hole in bowl.
4. Hold strainer body firmly in place while placing fiber gasket around strainer body, and then thread nut on to strainer body. Tighten securely using basin wrench.
5. Place poly washer in flanged top of tailpiece and thread slip nut on to threaded shank of strainer body. Tighten securely.
6. Remove excess putty from around strainer flange.



wadsworth

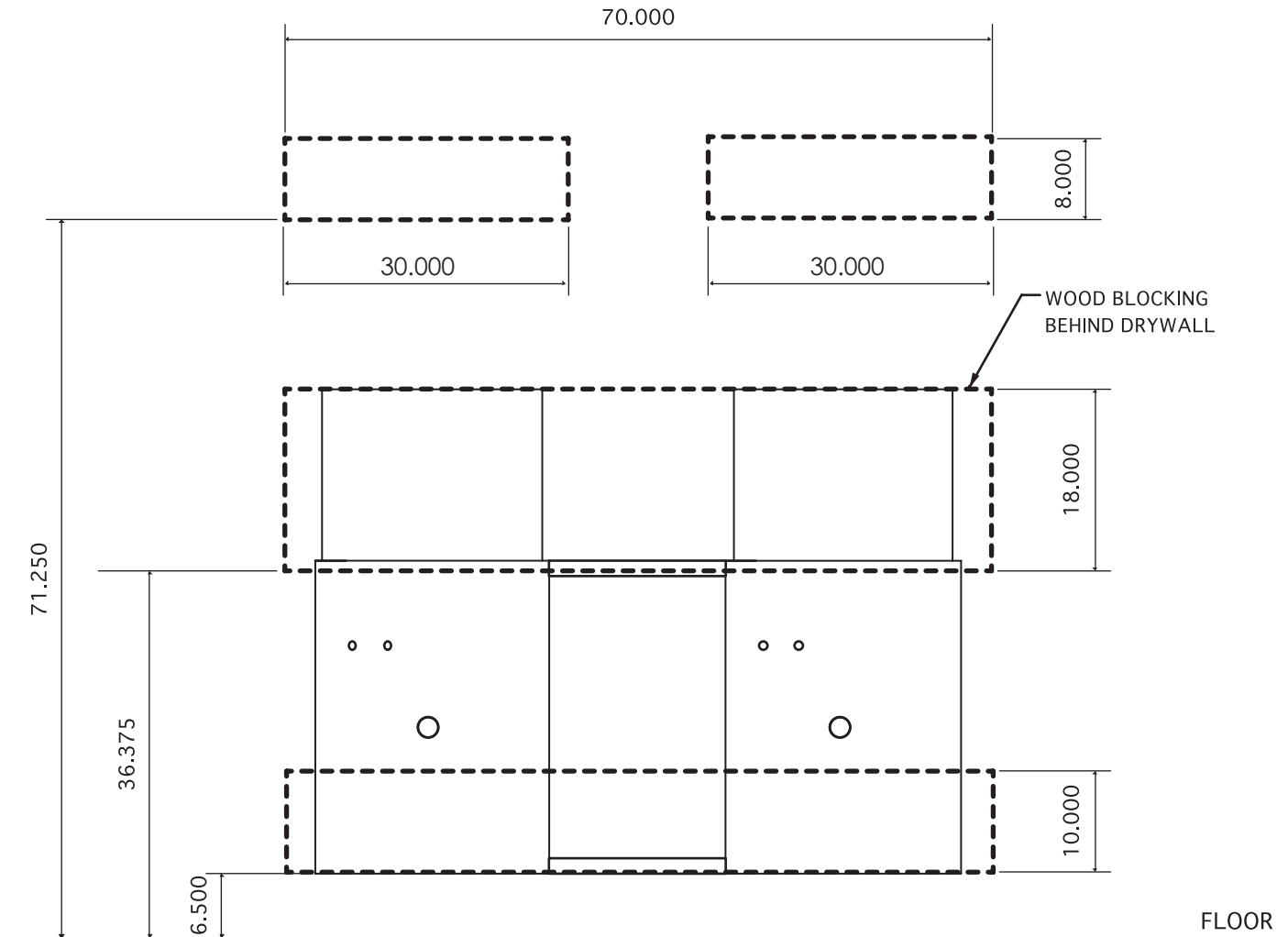
Product information for the **Backbar - Double Wall Mount**



The following parts are included with the unit:

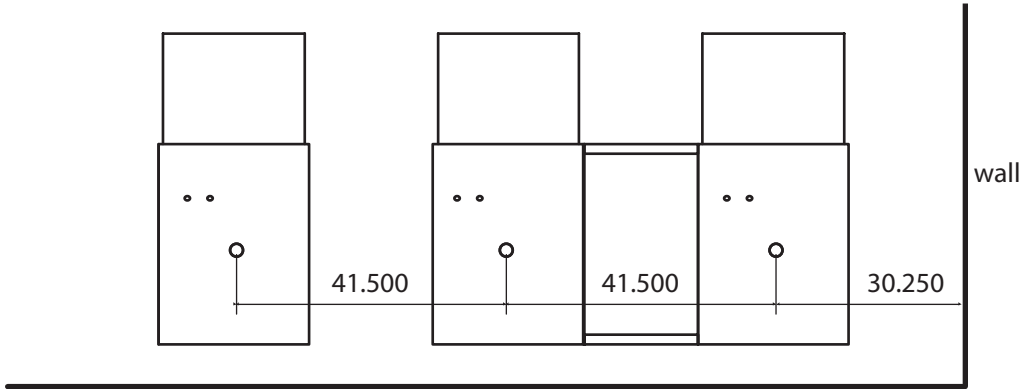
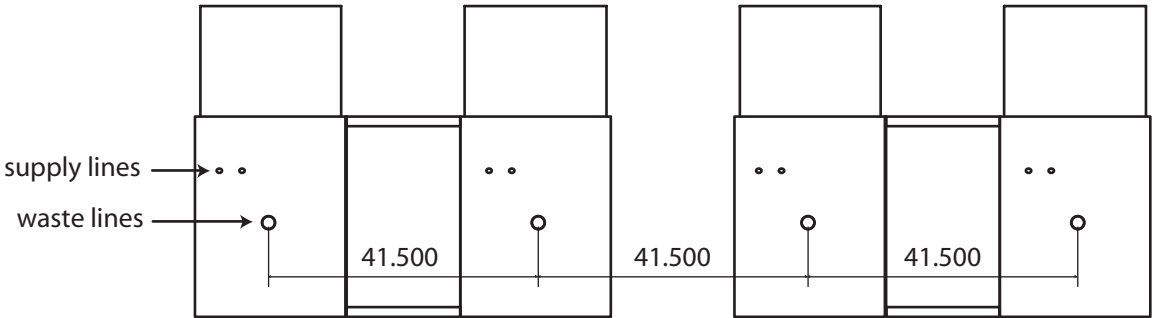
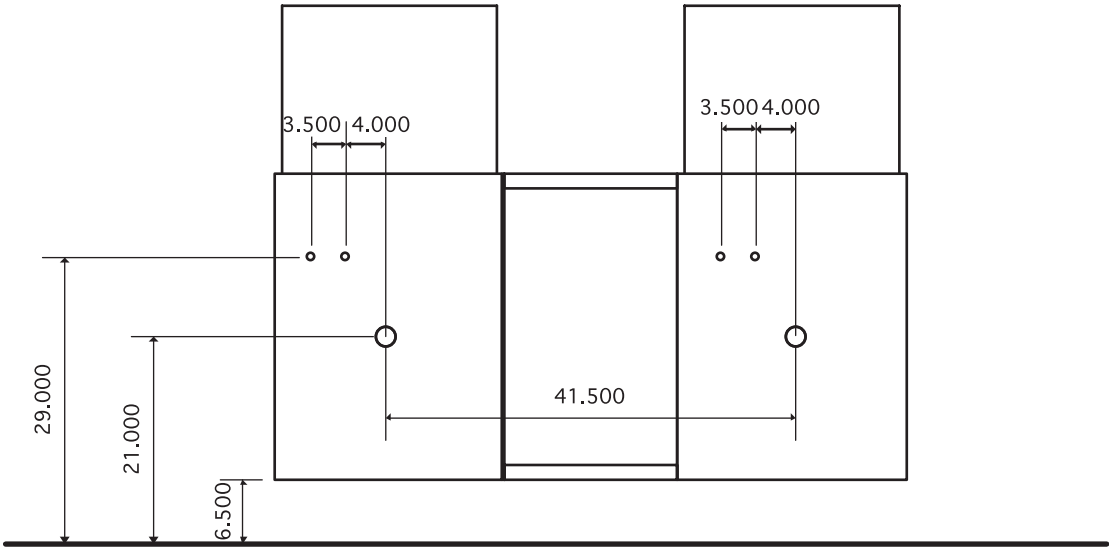
1. Stainless cabinets (2)
2. Steel cabinet spacers (2)
3. Stainless top (1)
4. Shampoo holders (2)
5. Shampoo sink - Marble Products model #2000 (2)
6. Faucet - model #1014U (2)
7. Hair trap (2)
8. Basket strainer
9. Upper towel cabinets (2)
10. Trash bin (1)
11. Stainless trash bin shelf (1)
12. acrylic doors (4)
13. laminate door (1)
13. Cab hardware

Blocking location for the **Backbar - Double Wall Mount**



1. Blocking location is shown in relation to cabinet. See plans for location of cabinet in room
2. **Wadsworth Design must be notified by contractor**, prior to the time of installation, in situations where the Backbars will be hung on anything other than drywall with the proper blocking.
3. **Supply and waste lines, facets, bowls and vacuum breakers will be installed by contractor (plumber).**

Plumbing locations for the **Backbar - Double Wall Mount**



1. Plumbing location is shown in relation to cabinet. See plans for location of cabinet in room

Cut sheet for the sink included with the **Backbar - Double Wall Mount**

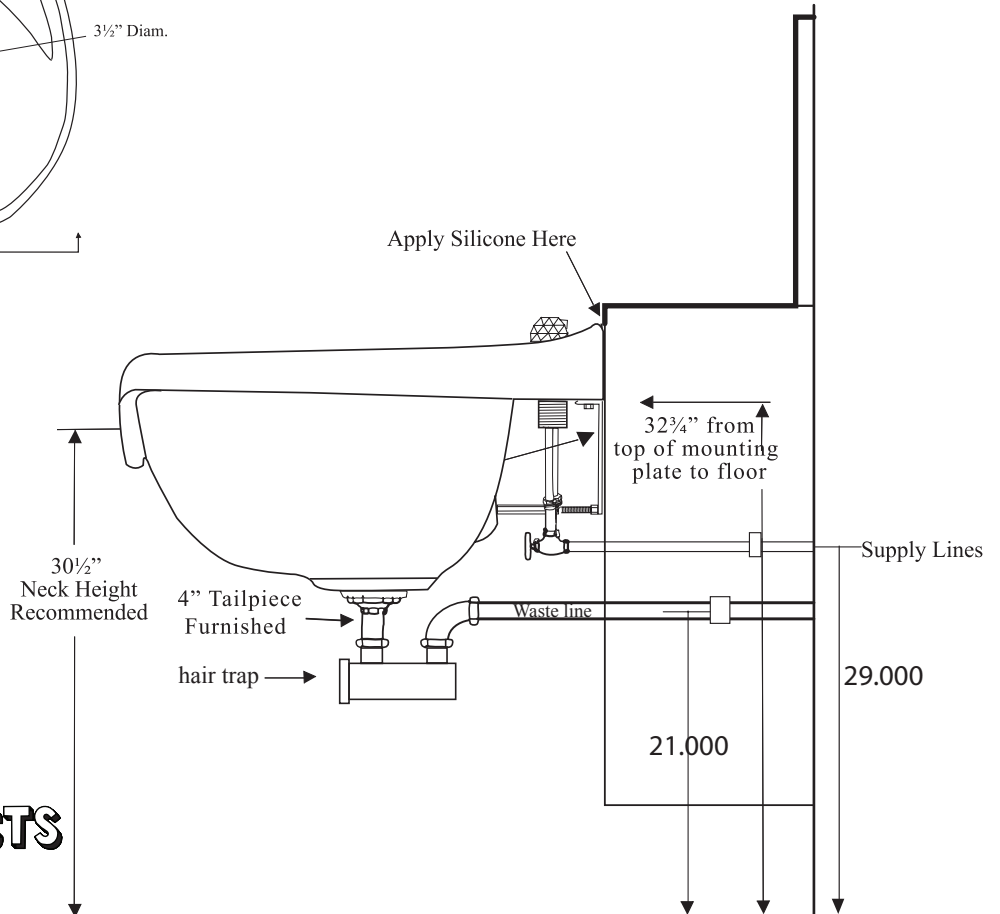
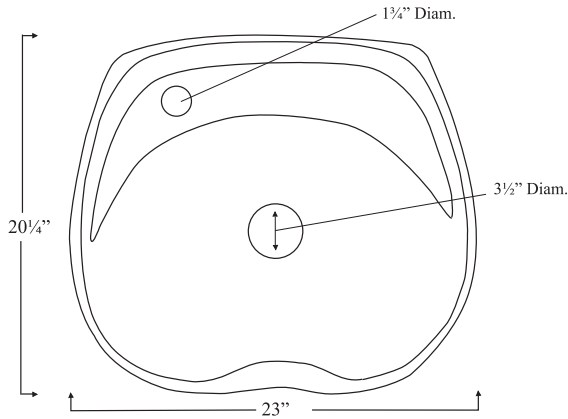
For certification information on this product go <http://pld.iampo.org> and look up file # 1877

Rough In Specifications for Model #2000

Important Note to Installer

Consult with owner before mounting bowl in order to determine suitable neckrest height. Recommended neckrest height for Model #2000 Shampoo Bowl is 30½". However because of various types of chairs that can be used with this bowl, it may be necessary to raise or lower the mounting height of the bowl. It is important to consider the chair/bowl relationship before mounting to the wall.

When installing in wet styling booths or cabinets refer to the manufacturer's specification sheet to determine how far the waste plumbing and water supply lines should extend from the wall to outer face of cabinet. The depth of the cabinet will determine this specification.

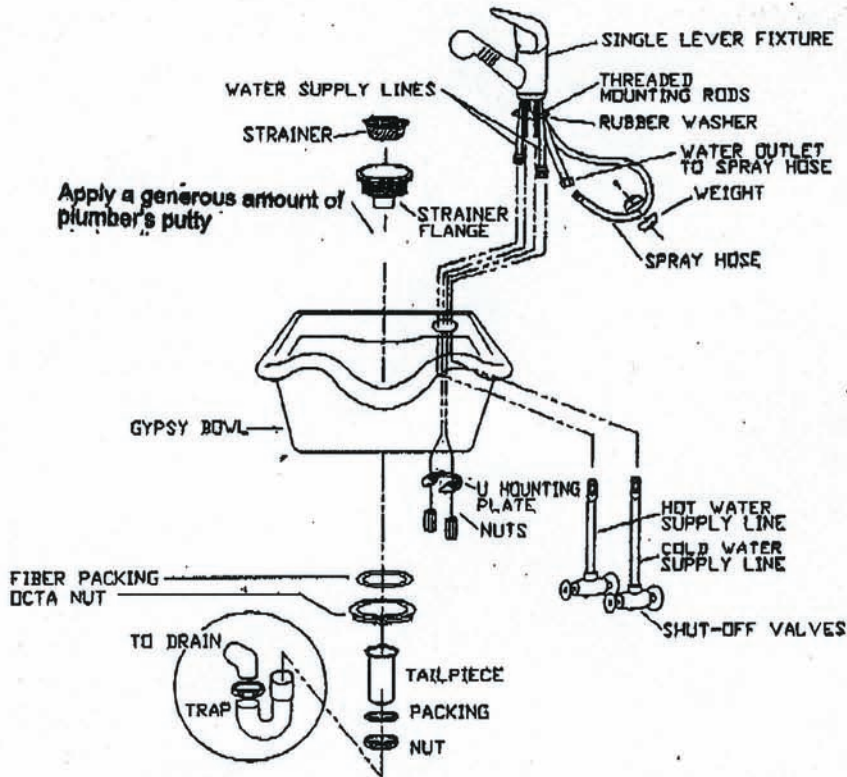


MARBLE PRODUCTS
Wichita, Kansas

Cut sheet for the faucet included with the **Backbar - Double Wall Mount**

For certification information on this product go <http://pld.iampo.org> and look up file # 3605

1014U FIXTURE INSTALLATION INSTRUCTIONS
PULL-OUT SINGLE LEVER SHAMPOO FIXTURE w/BUILT-IN VACUUM BREAKER



FAUCET INSTALLATION

Insert fixture through top of bowl with the rubber washer making contact with the bowl surface. Feed all hoses through hole in bowl.

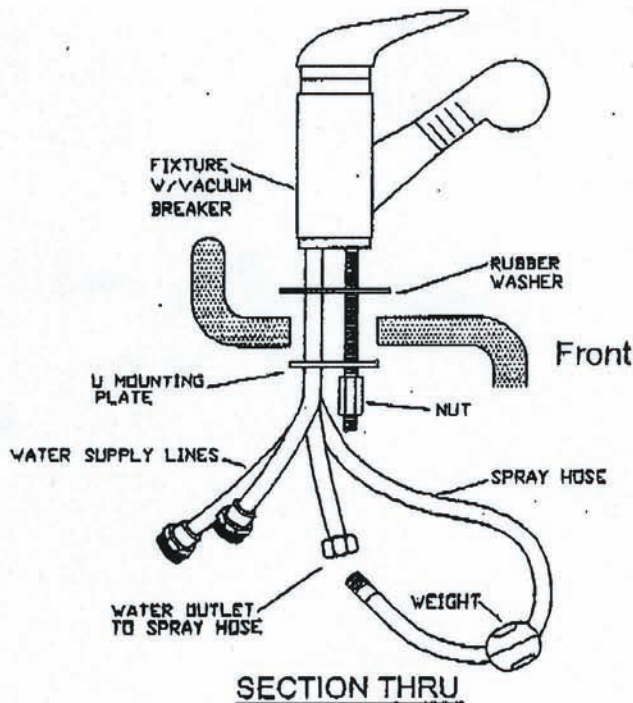
From underneath slide u-mounting plate onto threaded mounting rods and fasten nuts to rods. Tighten nuts snug up against u-mounting plate.

Attach end of spray hose to the water supply outlet on the fixture.

Note: Secure the single lever faucet hose to bowl prior to mounting.

Attach hot and cold water supply lines to the faucet.

Attach the weight to the spray hose near the bottom of the loop.

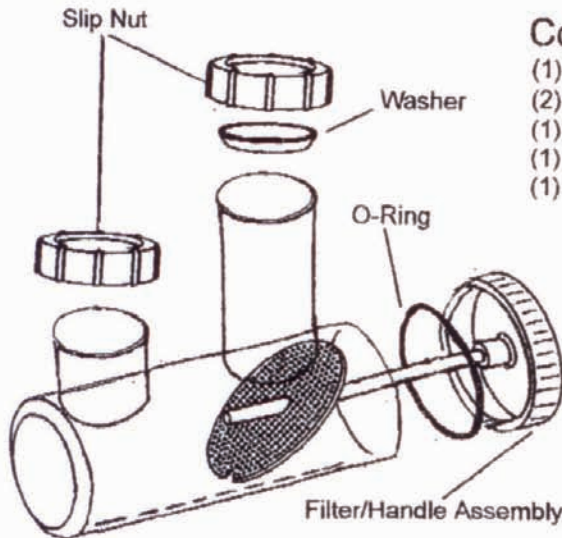


Cut sheet for the hair trap included with the **Backbar - Double Wall Mount**

For certification information on this product go <http://pld.iampo.org> and look up file # 4994

Installation Instructions

No. 1701 "CATCH-ALL" HAIR TRAP



Contents

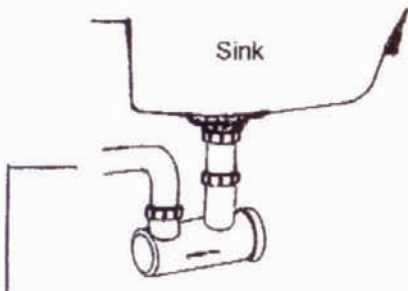
- (1) - Hair Trap
- (2) - Slip Nuts
- (1) - 1½" Washer
- (1) - Filter/Handle Assembly
- (1) - O-Ring

To Install

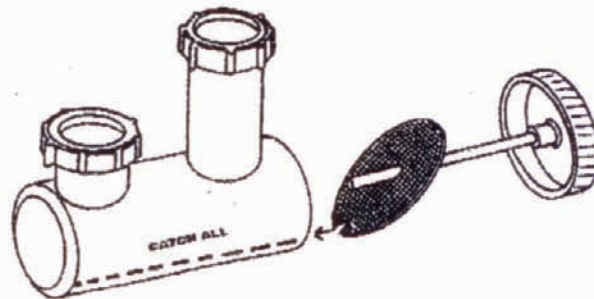
1. Place slip nut and washer over 1½" tail piece.
2. Place slip nut over flange of elbow pipe (not included).
3. Install Hair Trap and tighten slip nuts.
4. Run water and check for leaks.

To Clean

1. Unscrew filter/handle assembly.
2. Remove all debris.
3. Make sure o-ring is in position in the handle cap.
4. Replace by aligning slot in filter over the guide inside hair trap and tighten firmly by hand.
5. Run water and check for leaks.



One-piece flanged elbow pipe required for installation

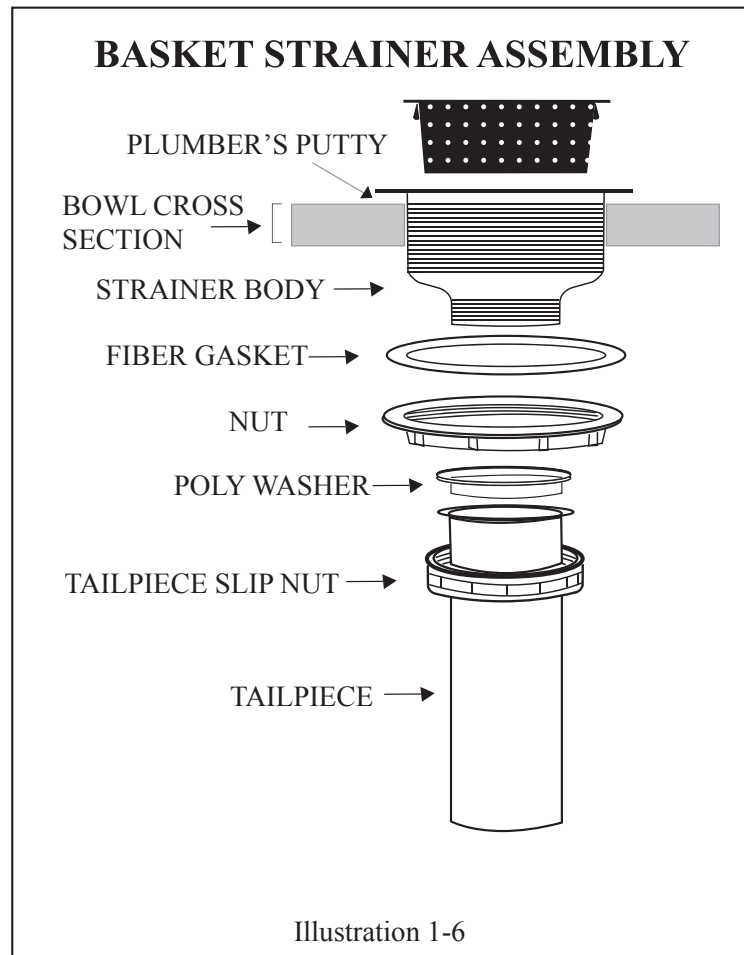


MP1701

Cut sheet for the strainer included with the **Backbar - Double Wall Mount**

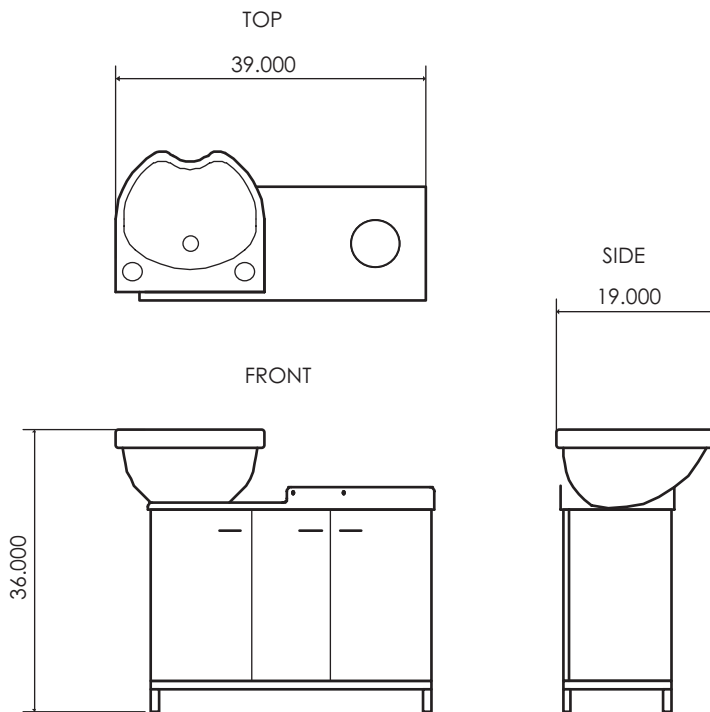
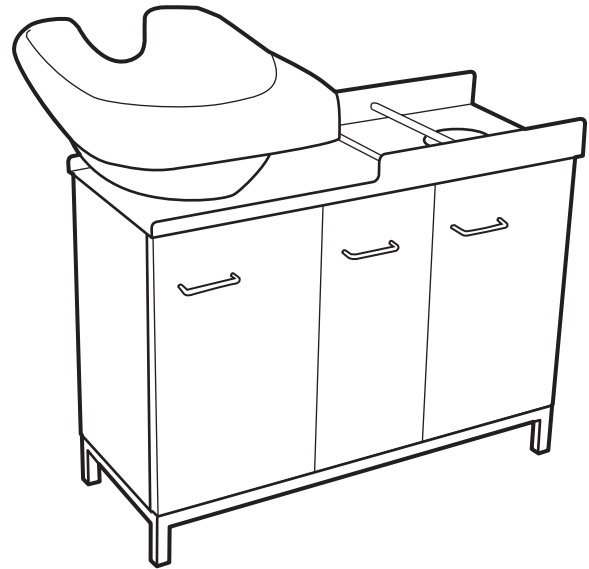
BASKET STRAINER INSTALLATION INSTRUCTIONS

1. Remove all components from strainer body.
2. Apply a generous amount of plumber's putty to the underside of strainer flange.
3. Insert strainer body through drain hole in bowl.
4. Hold strainer body firmly in place while placing fiber gasket around strainer body, and then thread nut on to strainer body. Tighten securely using basin wrench.
5. Place poly washer in flanged top of tailpiece and thread slip nut on to threaded shank of strainer body. Tighten securely.
6. Remove excess putty from around strainer flange.



wadsworth

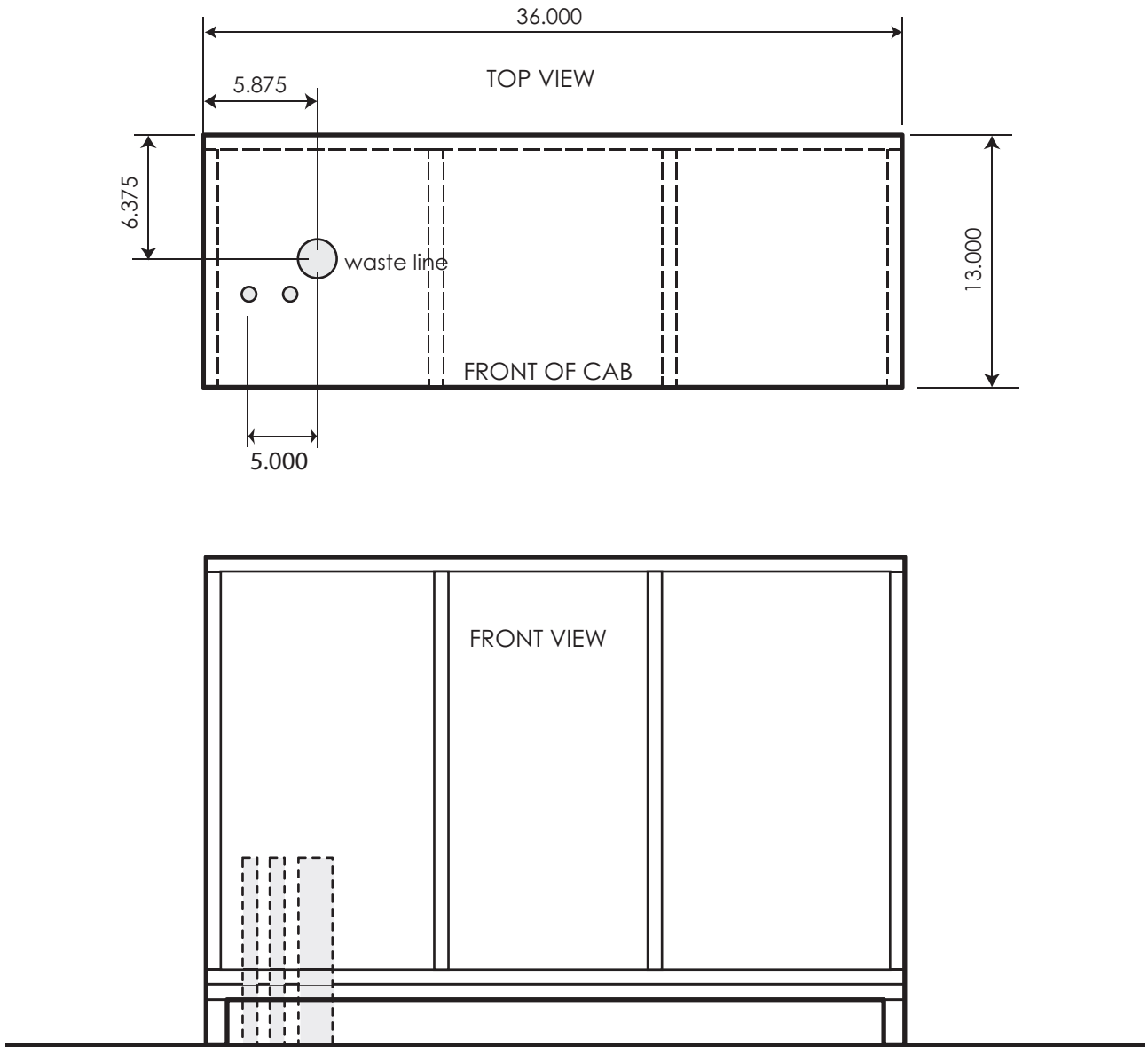
Product information for the Back Wash Unit



The following parts are included with the unit:

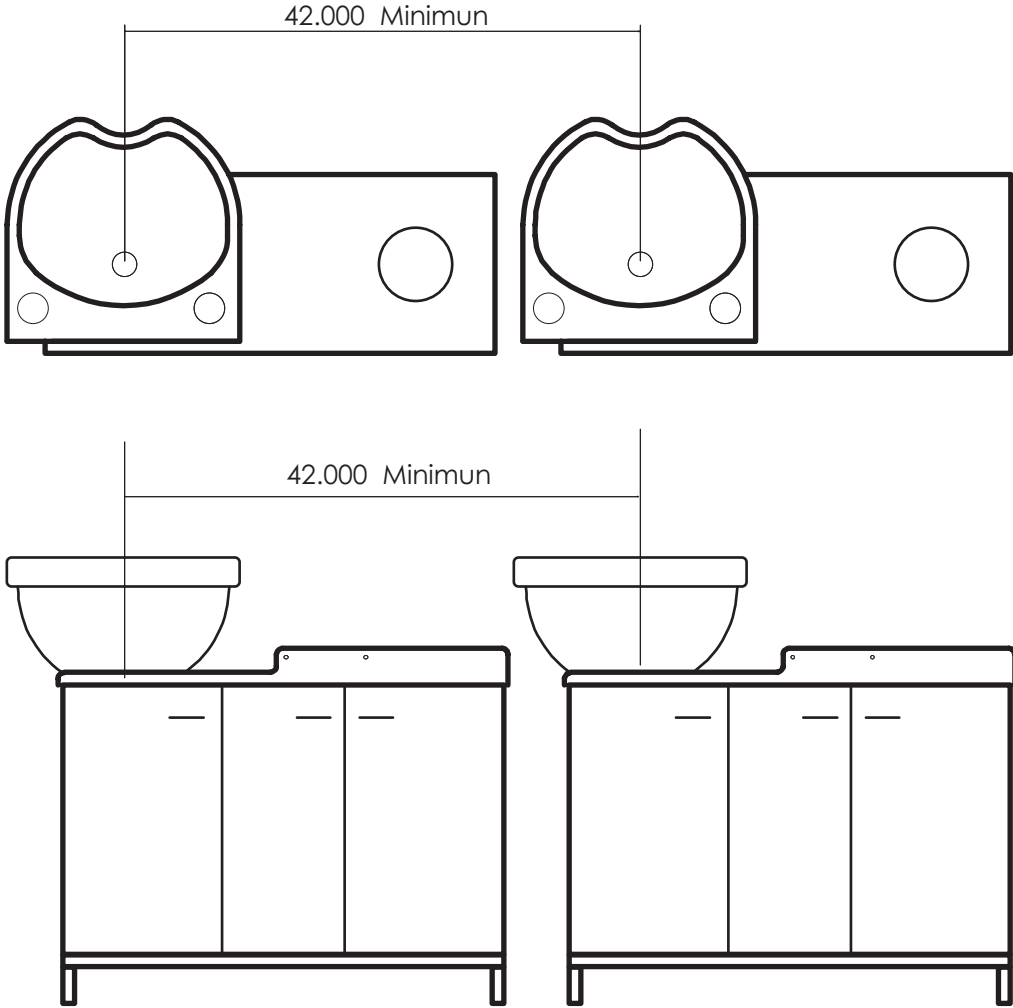
1. Welded steel Base frame (1)
2. Cabinet with stainless skirt (1)
3. Stainless top (1)
4. Sink - Marble Products model 3000 (1) (includes strainer assembly and 4" tailpiece)
5. Hair trap - Marble Products model 1701 (1)
6. Faucet - Marble Products model 550 dial-flo (1)
7. Vacuum breaker - Marble Products model 1729 (1)
7. Cabinet Hardware

Plumbing cut sheet for the Back Wash Unit



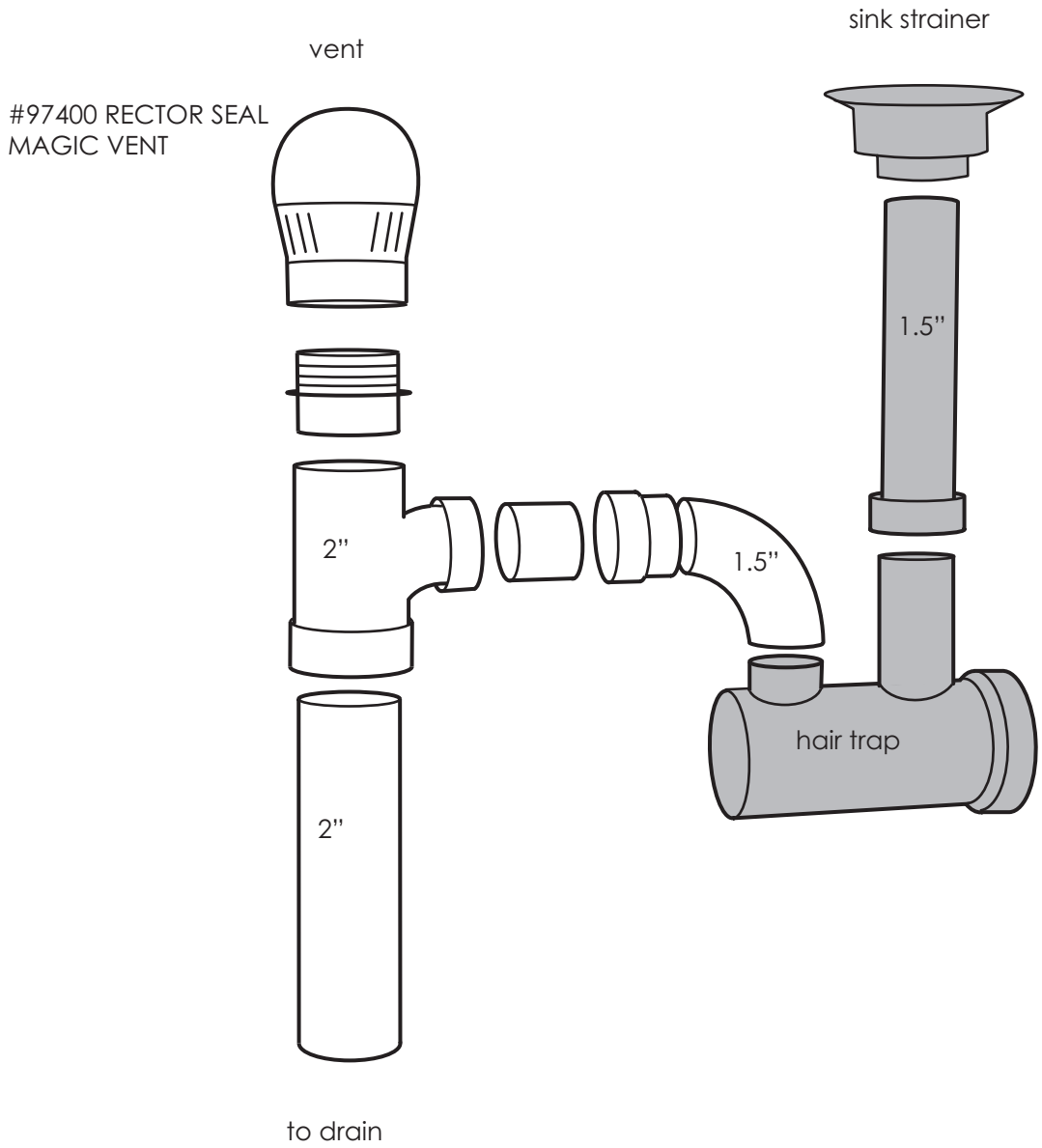
1. Plumbing locations are shown in relation to cabinet. See plans for location of cabinet in room.
2. See plans for location of sink on cabinet. This unit is available in both a right handed and a left handed configuration. A left sided sink version is shown, the dimensions on a right handed unit will be a mirror image of what is shown above.
3. All plumbing connected by contractor.

Spacing diagram for the Back Wash Unit



1. Backwash units should be spaced a minimum of 42" on center. Spacing will vary. see plans for spacing specific to your job.

Waste line plumbing for the Back Wash Unit



1. Only the parts shown in grey are provided by Wadsworth Design. All other components must be supplied by contractor (plumber).

Cut sheet for the sink included with the Back Wash Unit

For certification information on this product go <http://pld.iampo.org> and look up file # 1877

MARBLE PRODUCTS

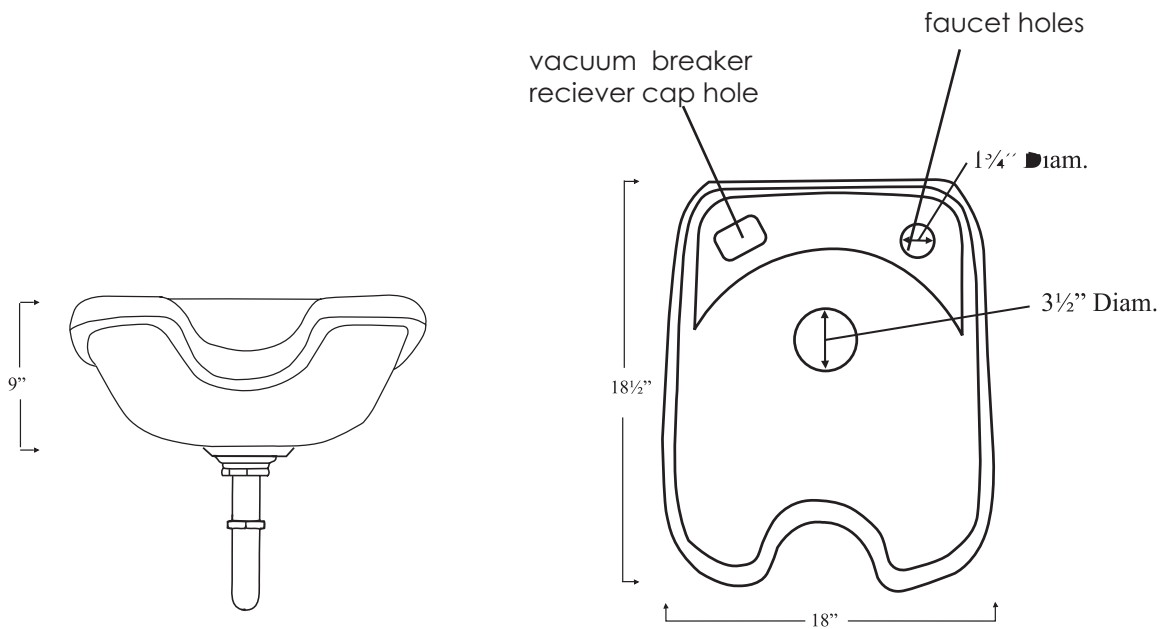
Wichita, Kansas

Rough In Specifications for Model #3000

Important Note to Installer

Consult with owner before mounting bowl in order to determine suitable neckrest height. Recommended neckrest height for Model #3000W Shampoo Bowl is 34". However because of various types of chairs that can be used with this bowl, it may be necessary to raise or lower the mounting height of the bowl. It is important to consider the chair/bowl relationship before mounting to the wall.

When installing in wet styling booths or cabinets refer to the manufacturer's specification sheet to determine how far the waste plumbing and water supply lines should extend from the wall to outer face of cabinet. The depth of the cabinet will determine this specification.

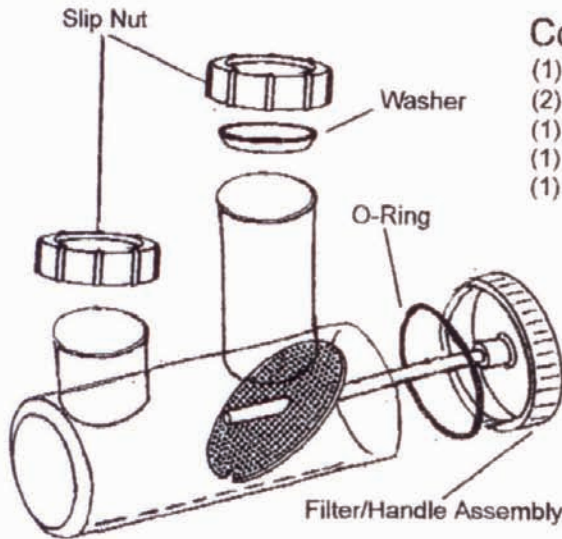


Cut sheet for the hair trap included with the Back Wash Unit

For certification information on this product go <http://pld.iampo.org> and look up file # 4994

Installation Instructions

No. 1701 "CATCH-ALL" HAIR TRAP



Contents

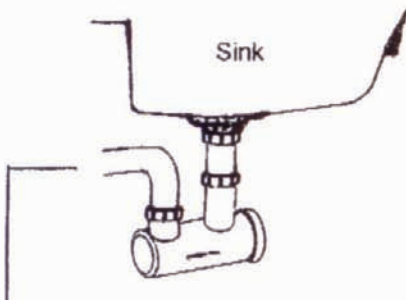
- (1) - Hair Trap
- (2) - Slip Nuts
- (1) - 1½" Washer
- (1) - Filter/Handle Assembly
- (1) - O-Ring

To Install

1. Place slip nut and washer over 1½" tail piece.
2. Place slip nut over flange of elbow pipe (not included).
3. Install Hair Trap and tighten slip nuts.
4. Run water and check for leaks.

To Clean

1. Unscrew filter/handle assembly.
2. Remove all debris.
3. Make sure o-ring is in position in the handle cap.
4. Replace by aligning slot in filter over the guide inside hair trap and tighten firmly by hand.
5. Run water and check for leaks.



One-piece flanged elbow pipe required for installation



MP1701

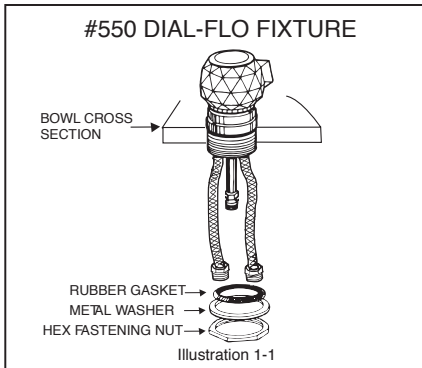
Cut sheet for the #550 faucet included with the Back Wash Unit

For certification information on this product go <http://pld.iampo.org> and look up file # 4674

Hardware Installation Instructions

Please follow these instructions first and install all included hardware, then proceed to "Airbrite Connection Instructions".

included
→

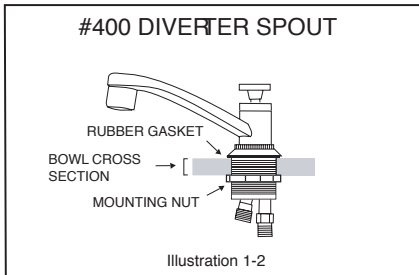


#550 DIAL-FLO FIXTURE INSTALLATION

1. Remove hex fastening nut and metal washer. Install fixture through the 1/4" opening with rubber gasket on top side of bowl.

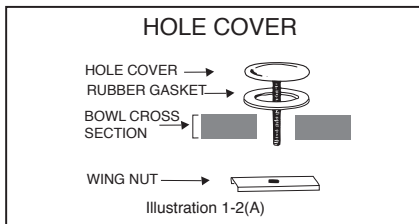
NOTE: Make sure that water supply outlet (short pipe) is facing to the rear of bowl.

2. Install metal washer and hex fastening nut and tighten.



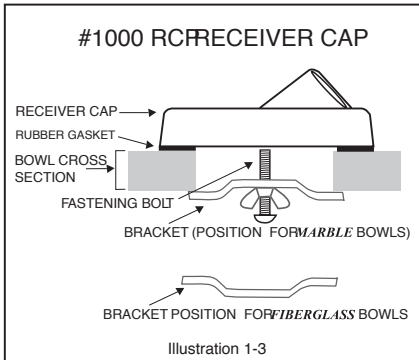
#400 DIVERTER SPOUT INSTALLATION

1. Remove mounting nut. Install fixture through the 1/4" opening with rubber gasket on top side of bowl.
2. Install and tighten mounting nut.



HOLE COVER INSTALLATION (for installations without #400 Diverter Spout)

included
→



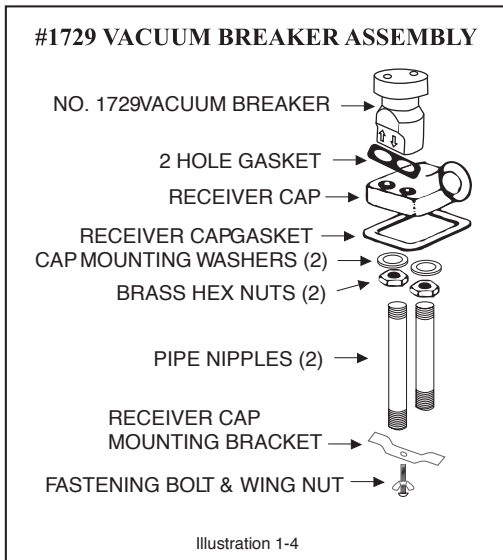
#1000 RCP RECEIVER CAP INSTALLATION

1. Install rubber gasket to top of bowl, around rectangular opening. Adhesive side of gasket should contact top of bowl.
2. Place receiver cap on top of gasket.
3. Thread wing nut on to fastening bolt.
4. Insert fastening bolt through bracket. **Note different positions for marble and fiberglass bowls.**
5. Thread the bolt securely in to the bottom of the receiver cap, from the under side of bowl. **(Do not over tighten).**
6. Make sure bracket is in position as shown and tighten wing nut to secure receiver cap to bowl.

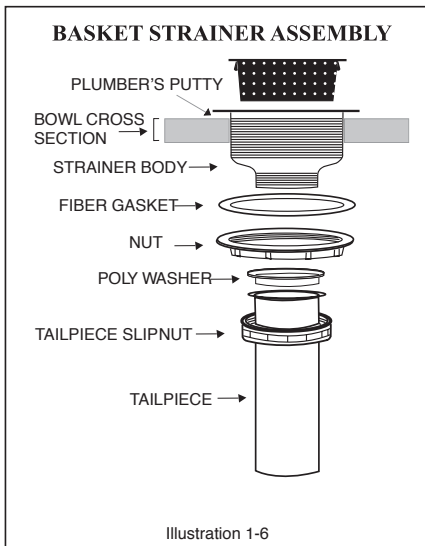
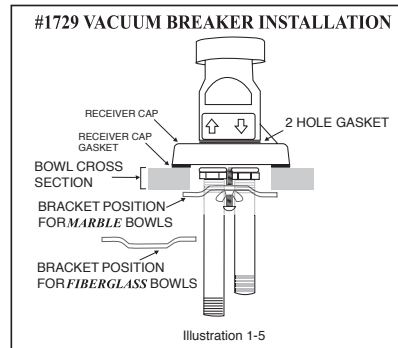
Cut sheet for the vacuum breaker / strainer included with the Back Wash Unit

#1729 VACUUM BREAKER INSTALLATION INSTRUCTIONS
IMPORTANT:

Make sure that copper pipes are installed exactly as shown with LONG PIPE installed in line with the ARROW ON THE VACUUM BREAKER BODY POINTING UP, and the SHORT PIPE in line with the ARROW POINTING DOWN.



1. Align and install the two hole gasket with adhesive side to the top of the receiver cap.
2. Thread the brass nuts all the way onto the pipe nipples, on the ends with the most threads, then install the washers.
3. Apply Teflon tape to the threads and insert the pipes through the bottom of the receiver cap. Making sure that the long pipe is aligned with the "UP" arrow on the vacuum breaker body and the short pipe with the "DOWN" arrow thread the pipes into vacuum breaker securely.
4. Secure the vacuum breaker to the receiver cap by tightening the brass hex nuts.
5. Mount this assembly to the bowl. (See Illustration 1-5.)



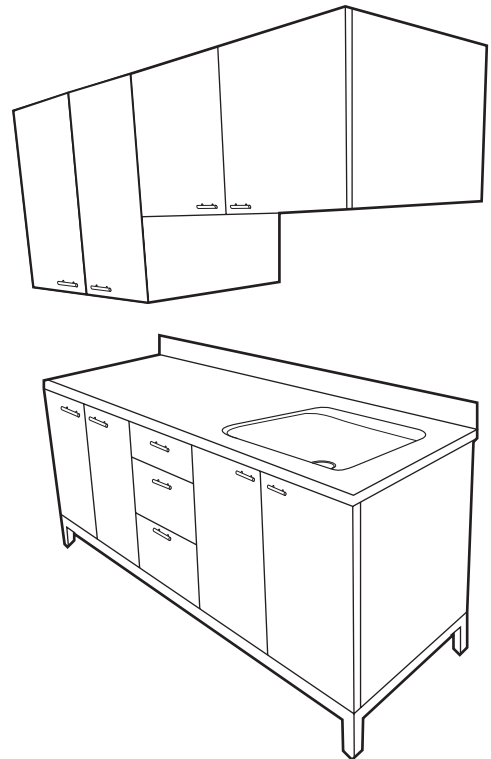
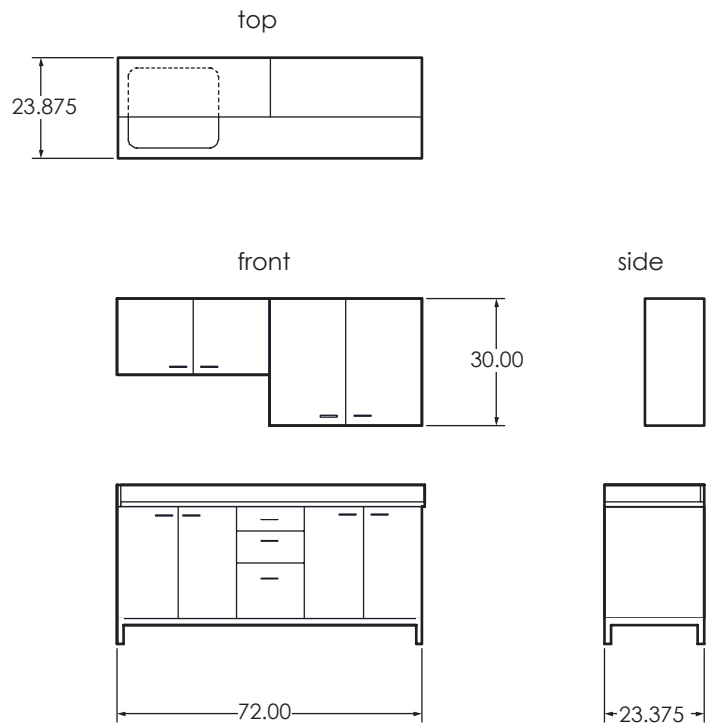
BASKET STRAINER INSTALLATION INSTRUCTIONS

1. Remove all components from strainer body
2. Apply a generous amount of plumber's putty to the underside of strainer flange.
3. Insert strainer body through drain hole in bowl.
4. Hold strainer body firmly in place while placing fiber gasket around strainer body and then thread nut on to strainer body tighten securely using basin wrench.
5. Place poly washer in flanged top of tailpiece and thread slip nut on to the shank of strainer body. Tighten securely
6. Remove excess putty from around strainer flange.

HDWEPG2

wadsworth

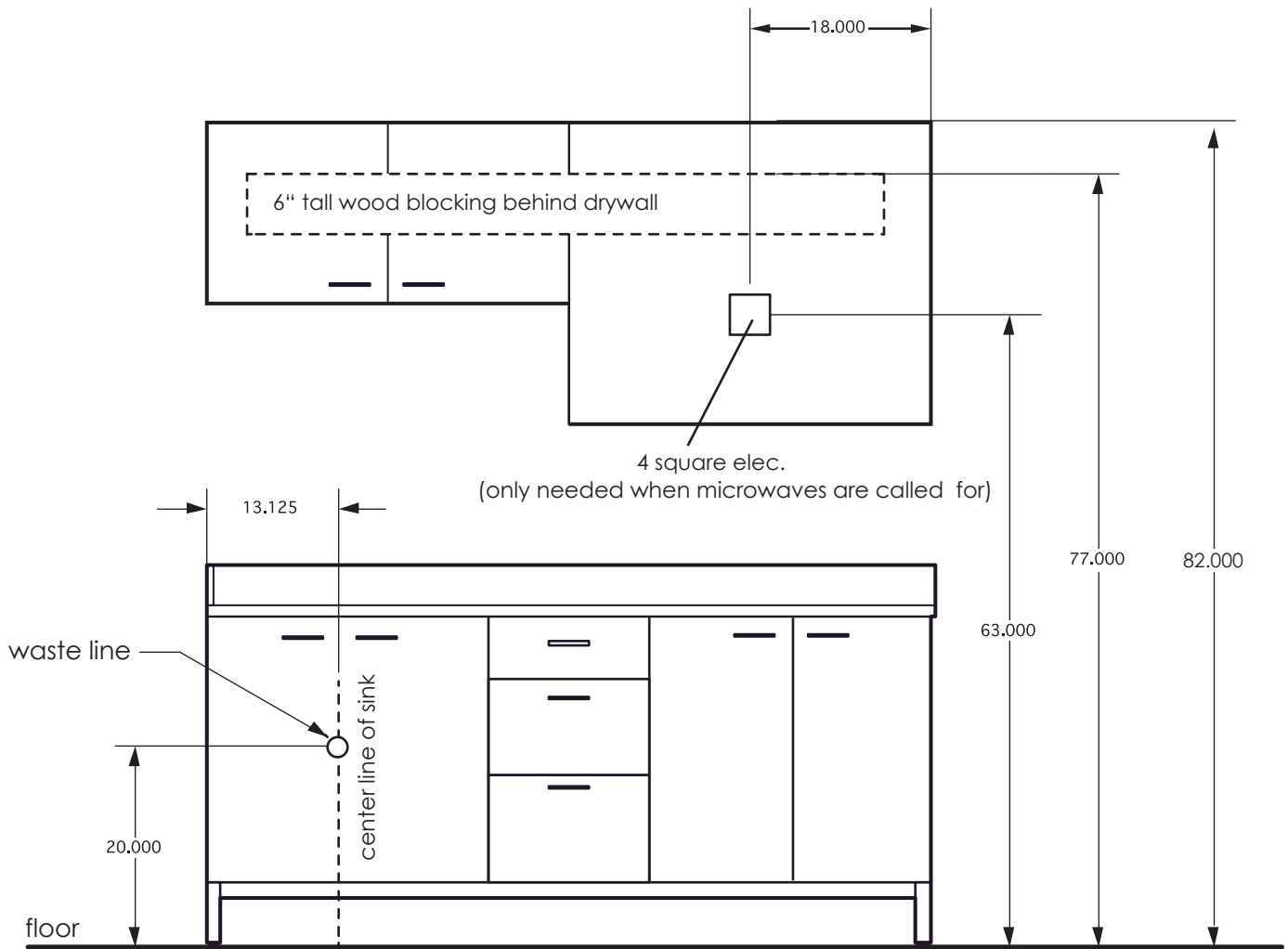
Product information for the **Standard 6' Cabinet**



The following parts are included with the unit:

1. Welded steel base frame (1)
2. Lower cabinets (2)
3. Lower drawer set (1)
4. Laminate counter top (1)
5. Laminate back splash (1)
6. Laminate side splash (1) (may not be used in some configurations)
7. Stainless sink - Elkay model DLR221910 - U channel 3 hole (1)
8. Faucet - Moen model 8948 (1)
9. Sink strainer - Keeney model 760-1 (1)
10. Large upper cab (1) (microwave unit has no doors)
11. Small upper cab (1)
12. Cabinet Hardware

Plumbing, electrical, and blocking locations for the **Standard 6' Cabinet**



1. Plumbing location is shown in relation to cabinet. See plans for location of cabinet in room
2. See plans for location of sink. This cabinet set can be installed in two configurations: With the sink on the right, or with the sink on the left. Dimensions for a left handed sink are shown above. A right handed configuration will be a mirror image of what is shown above.
3. See plans for electrical requirements. Only units that call for microwaves need the 4 square box in the upper cabinet.
4. **Wadsworth Design must be notified by contractor**, prior to the time of installation, in situations where the upper cabinets will be hung on anything other than drywall with the proper blocking.
5. Supply & waste lines, faucet & sink to be connected or set by plumber

Specifications for the sink included with the **Standard 6' Cabinet**

ELKAY **SPECIFICATIONS**

Lustertone® Deep Single Bowl Sink Models DLR and DLRQ Series

GENERAL

Highest quality sink bowl seamlessly formed of #18 gauge, type 304 (18-8) nickel bearing stainless steel. Self-rimming.

DESIGN FEATURES

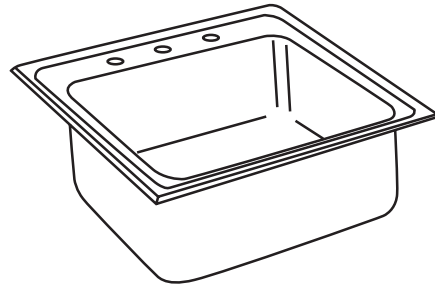
Bowl Depth: 10" [DLR151710], 10-1/8" [all others], 11-5/8" [DLR(Q)312212] or 12-1/8" [DLR(Q)222212, DLR(Q)252212].

Coved Corners: 1-3/4" vertical and horizontal radius.

Bowl and Faucet Deck Recess: 3/16" below outside edge of sink.

Finish: Exposed surfaces are hand blended to a lustrous highlighted satin finish.

Underside: Fully undercoated to dampen sound and prevent condensation. DLR(Q)191910 and DLR252110 underside is fully protected by heavy duty Sound Guard® undercoating.



Model DLR(Q)2522103

OTHER

Drain Opening: 3-1/2".

NOTE: Unless otherwise specified, sink is furnished with 3 faucet holes as shown.

These sinks comply with ANSI Standard A112.19.3M.

SINK DIMENSIONS (INCHES)*

| U-Channel Model Number | Quick-Clip Model Number | Overall | | Inside Bowl | | | Cutoutn Countertop (1/4" Radius Corners) | | No. of 1 1/2" Dia. Faucet Holes 4" Center | Minimum Cabinet Size | Ship Wt. Lbs. |
|------------------------|-------------------------|---------|--------|-------------|--------|--------|--|--------|---|----------------------|---------------|
| | | L | W | L | W | D | L | W | | | |
| | | A | B | C | D | E | L | W | | | |
| DLR151710 | - | 15 | 17 1/2 | 12 | 12 | 10 | 14 1/8 | 16 1/8 | 1,2,MR2,3 | 18 | 12 1/2 |
| DLR171610 | DLRQ171610 | 17 | 16 | 14 | 10 | 10 1/8 | 16 1/8 | 15 1/8 | 1,2,MR2,3,OS4 | 21 | 12 |
| DLR172010 | DLRQ172010 | 17 | 20 | 14 | 14 | 10 1/8 | 16 1/8 | 19 1/8 | 1,2,MR2,3,OS4 | 21 | 14 |
| DLR172210 | DLRQ172210 | 17 | 22 | 13 1/2 | 16 | 10 1/8 | 16 1/8 | 21 1/8 | 1,2,MR2,3,OS4 | 21 | 14 1/4 |
| DLR191910 | DLRQ191910 | 19 1/2 | 19 | 16 | 13 1/2 | 10 1/8 | 18 1/8 | 18 1/8 | 1,2,MR2,3,OS4 | 24 | 14 1/4 |
| DLR202210 | DLRQ202210 | 19 1/2 | 22 | 16 | 16 | 10 1/8 | 18 1/8 | 21 1/8 | 1,2,MR2,3,OS4 | 24 | 14 1/2 |
| DLR221910 | DLRQ221910 | 22 | 19 1/2 | 18 | 14 | 10 1/8 | 21 1/8 | 18 1/8 | 1,2,MR2,3,4,5 | 27 | 14 3/4 |
| DLR222210 | DLRQ222210 | 22 | 22 | 19 | 16 | 10 1/8 | 21 1/8 | 21 1/8 | 1,2,MR2,3,4,5 | 27 | 15 |
| DLR222212 | DLRQ222212 | 22 | 22 | 19 | 16 | 12 1/8 | 21 1/8 | 21 1/8 | 1,2,MR2,3,4,5 | 27 | 17 |
| DLR252110 | - | 25 | 21 1/4 | 21 | 15 1/4 | 10 1/8 | 24 1/8 | 20 1/8 | 1,2,MR2,3,4,5 | 30 | 18 |
| DLR252210 | DLRQ252210 | 25 | 22 | 21 | 15 1/4 | 10 1/8 | 24 1/8 | 21 1/8 | 1,2,MR2,3,4,5 | 30 | 18 1/2 |
| DLR252212 | DLRQ252212 | 25 | 22 | 21 | 15 1/4 | 12 1/8 | 24 1/8 | 21 1/8 | 1,2,MR2,3,4,5 | 30 | 19 |
| DLR312210 | DLRQ312210 | 31 | 22 | 28 | 16 | 10 1/8 | 30 1/8 | 21 1/8 | 1,2,MR2,3,4,5 | 36 | 22 1/2 |
| DLR312212 | DLRQ312212 | 31 | 22 | 28 | 16 | 11 1/8 | 30 1/8 | 21 1/8 | 1,2,MR2,3,4,5 | 36 | 22 1/2 |
| DLRS332210 | DLRSQ332210 | 33 | 22 | 28 | 16 | 10 1/8 | 32 1/8 | 21 1/8 | 1,2,MR2,3,4,5 | 36 | 23 |

*Length is from right to left from back

SEE OTHER SIDE FOR PRODUCT DIMENSIONS.

ALL DIMENSIONS IN INCHES, TO CONVERT TO MILLIMETERS MULTIPLY BY 25.4.

In keeping with our policy of continuing product improvement, Elkay reserves the right to change product specifications without notice.

This specification describes an Elkay product with design, quality and functional benefits to the user. When making a comparison of other producers offerings, be certain these features are not overlooked.

Elkay
www.elkayusa.com

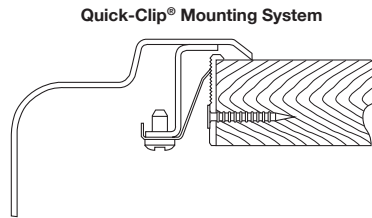
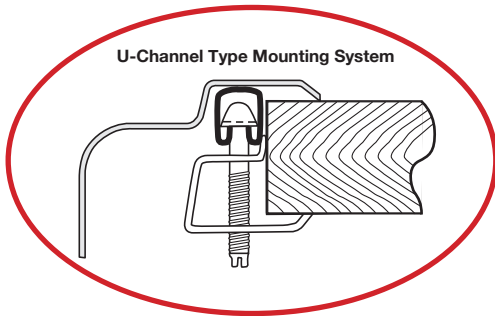
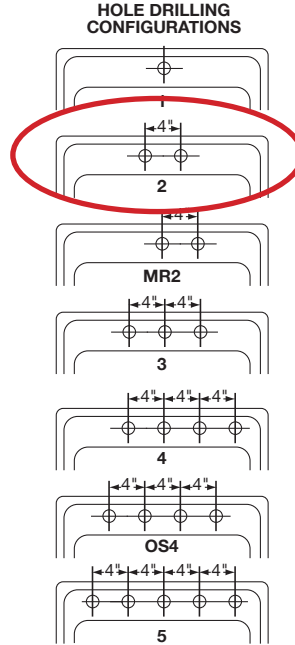
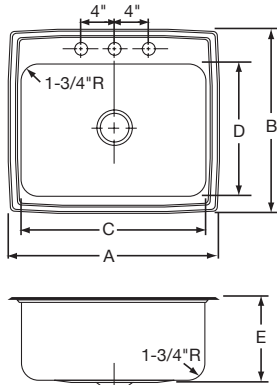
2222 Camden Court
Oak Brook, IL 60523

Printed in U.S.A.
©2004 Elkay
(Rev. 3/04) 1-18H

Specifications for the sink included with the **Standard 6' Cabinet**

Lustertone[®] Deep Single Bowl Sink
Models DLR and DLRQ Series

ELKAY[®]
SPECIFICATIONS



Specifications for the faucet included with the **Standard 6' Cabinet**



Specifications

FAUCET DESCRIPTION

- Chrome plated metal construction
- 1/2" IPS connections
- Supplied with vandal resistant screws
- Valve body is of brass construction

OPERATION

- Wrist Blade style handles with hot and cold color indicators
- Hot side counterclockwise (1/4) turn to open (clockwise to close)
- Cold side clockwise (1/4) turn to open (counterclockwise to close)

FLOW

- Aerator is limited to 2.2 gpm max (8.3 L/min)

CARTRIDGE

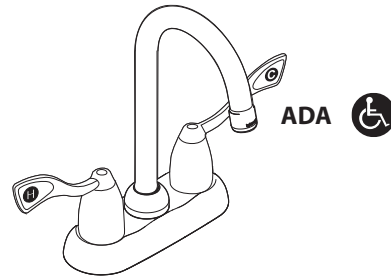
- 1224 cartridge design
- Nonmetallic and stainless steel construction

STANDARDS

- Third party certified by IAPMO and CSA to meet CSA B-125 and ASME A112.18.1M, NSF 61/9, California Proposition 65, and all applicable specifications referenced therein and complies with the applicable requirements of ANSI A117.1

WARRANTY

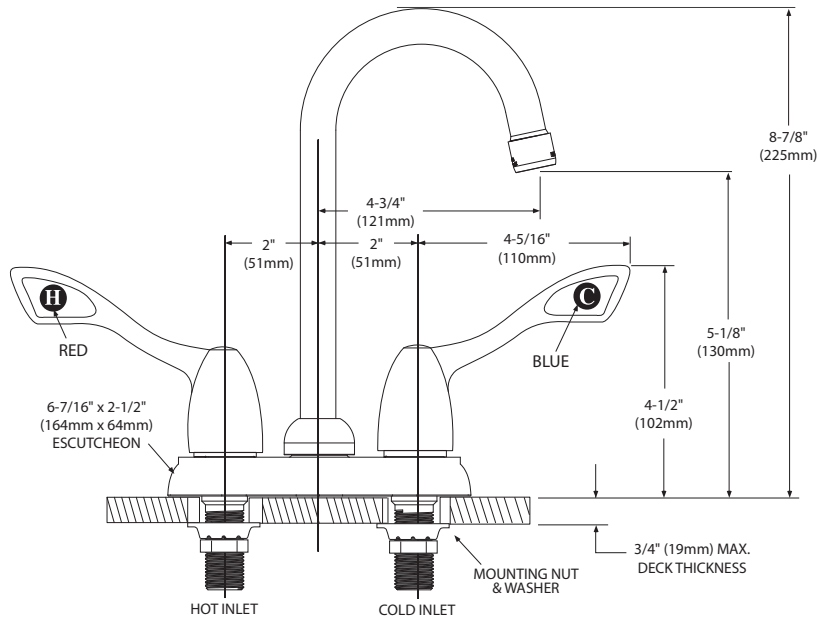
- Warranted for 5 years against material or manufacturing defects



Two-Handle Clinic Faucet

Model: 8948

NOTE: THIS FAUCET IS DESIGNED TO BE INSTALLED THROUGH 2 HOLES, 1" MIN. DIA. AND 4" ON CENTER



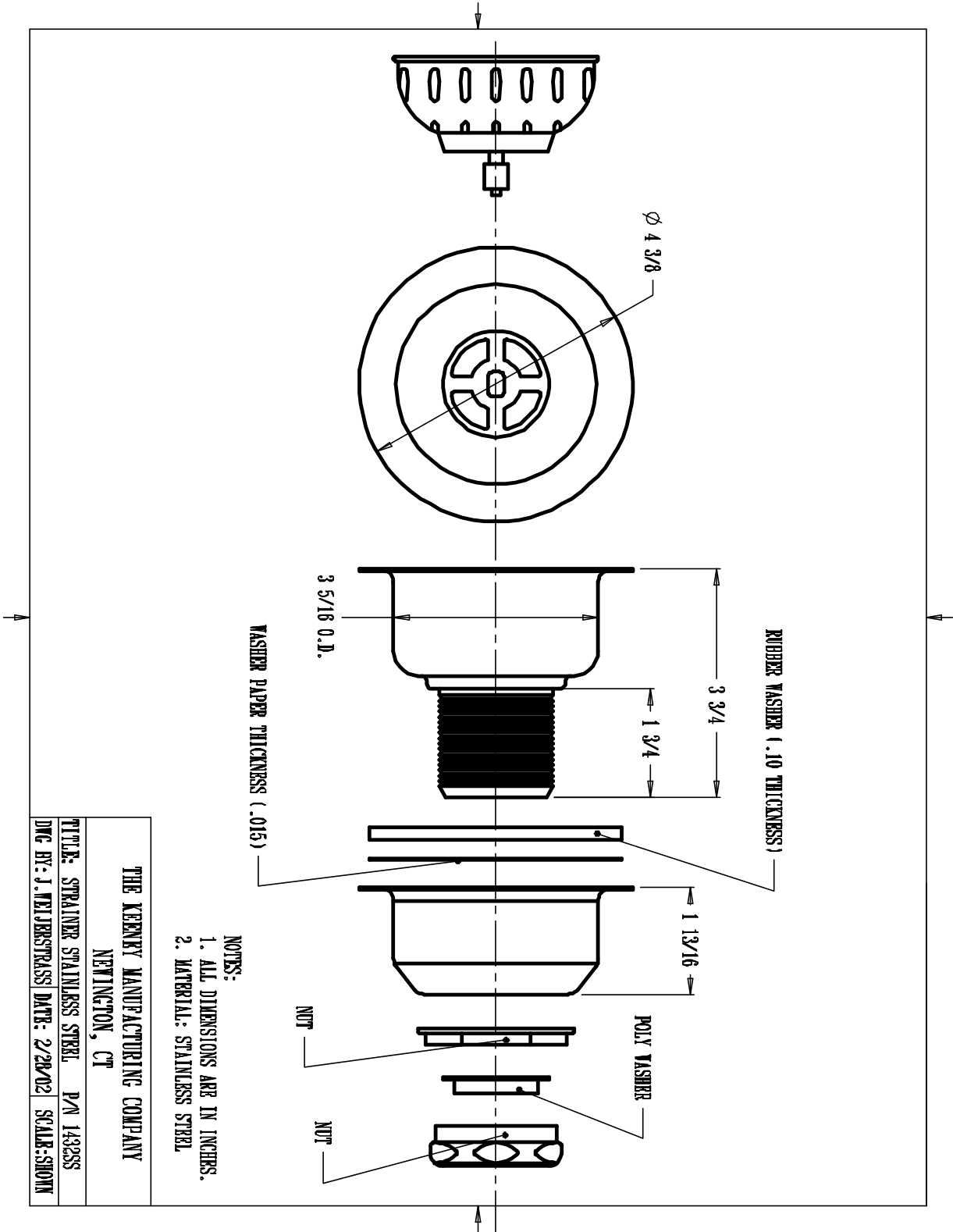
CRITICAL DIMENSIONS

(DO NOT SCALE)

MOEN SPECIFIER SERVICES 1-800-321-8809 Ext. 2158

www.moen.com

Specifications for the strainer included with the **Standard 6' Cabinet**

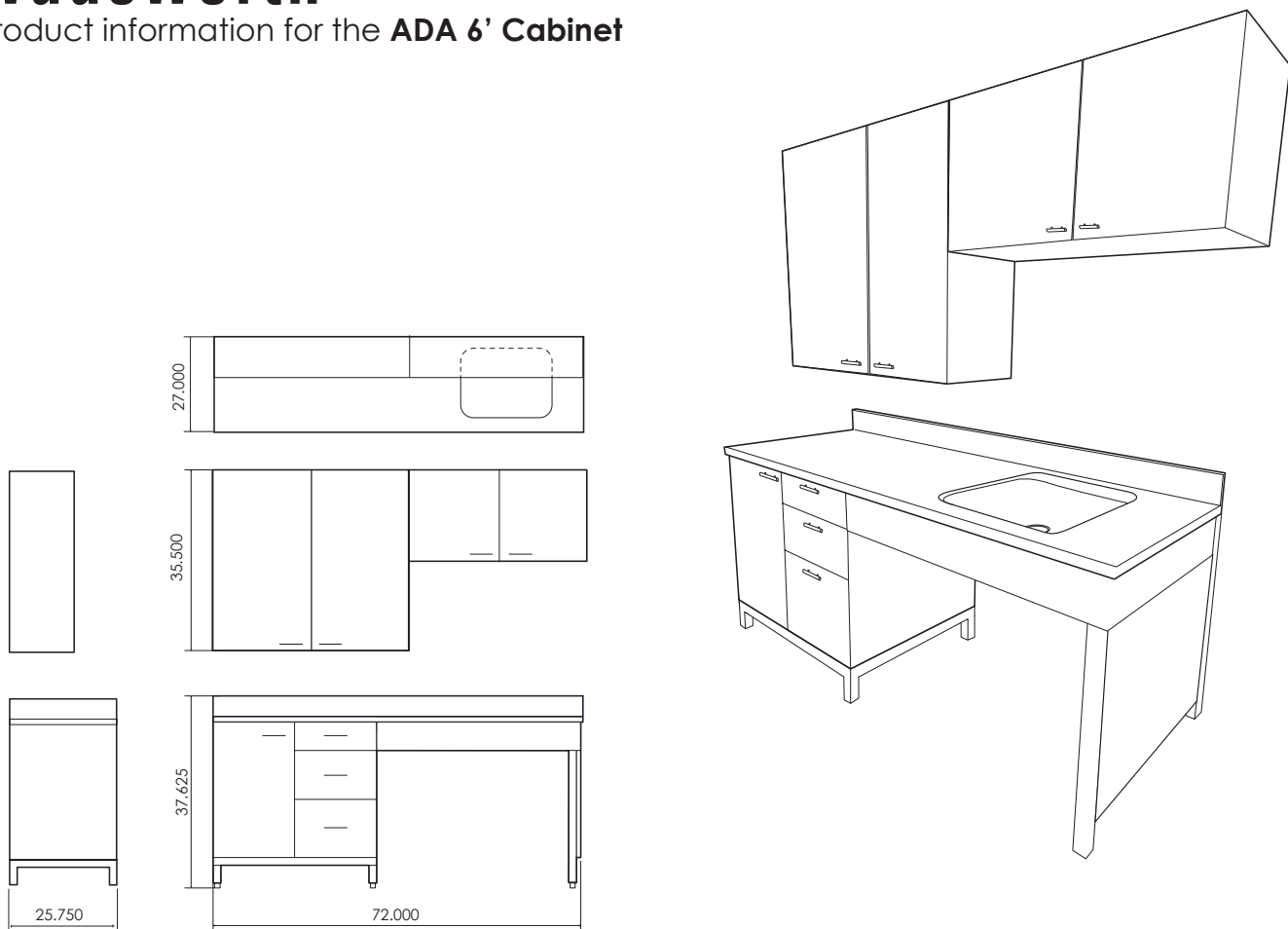


- NOTES:
1. ALL DIMENSIONS ARE IN INCHES.
 2. MATERIAL: STAINLESS STEEL

| | | | |
|--|---------------|--------------|--|
| THE KENNY MANUFACTURING COMPANY | | | |
| NEWINGTON, CT | | | |
| TITLE: STRAINER STAINLESS STEEL | P/N 1432SS | | |
| ENG. BY: J. MELISSAS | DATE: 2/28/02 | SCALE: SHOWN | |

wadsworth

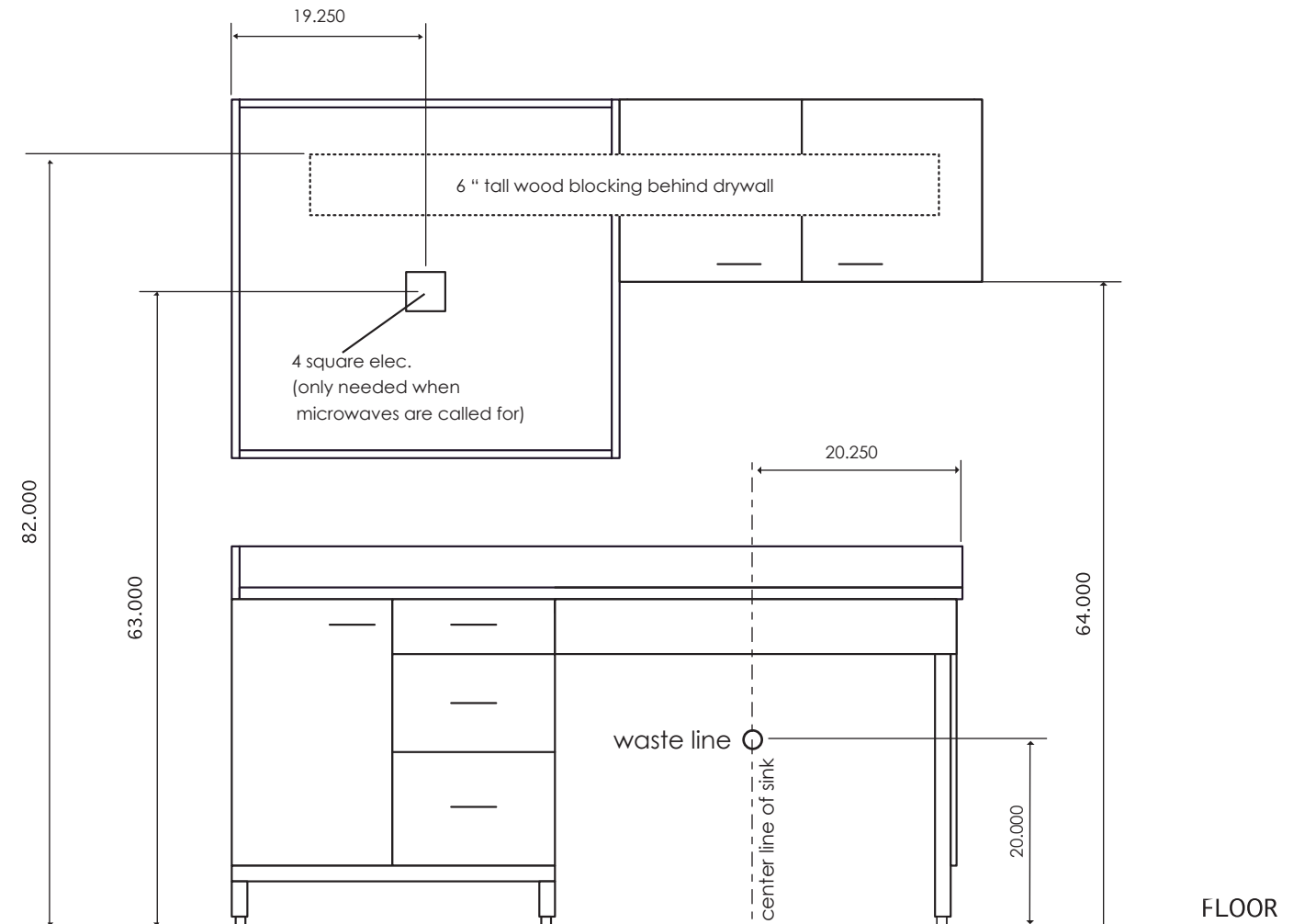
Product information for the **ADA 6' Cabinet**



The following parts are included with the unit:

1. Welded steel base frame (1)
2. Lower cabinets (1)
3. Lower drawer set (1)
4. Laminate counter top (1)
5. Laminate back splash (1)
6. Laminate side splash (1) (may not be used in some configurations)
7. Stainless sink Elkay model LRAD2522
8. Faucet - Moen model 8289
9. Strainer- Keeney 1432SS
10. Large upper cab (1) (microwave unit has no doors)
11. Small upper cab

Plumbing, electrical, and blocking locations for the **ADA 6' Cabinet**



1. Plumbing location is shown in relation to cabinet. See plans for location of cabinet in room
2. See plans for location of sink. This cabinet set can be installed in two configurations: With the sink on the right, or with the sink on the left. Dimensions for a left handed sink are shown above. A right handed configuration will be a mirror image of what is shown above.
3. See plans for electrical requirements. Only units that call for microwaves need the 4 square box in the upper cabinet.
4. **Wadsworth Design must be notified by contractor**, prior to the time of installation, in situations where the upper cabinets will be hung on anything other than drywall with the proper blocking.
5. Supply & waste lines, faucets & sink to be connected or set by plumber.

Specifications for the sink included with the **ADA 6' Cabinet**

ELKAY[®]

SPECIFICATIONS

Lustertone[®] Single Bowl Sink Models LRAD and LRADQ Series – A.D.A. Compliant

GENERAL

Highest quality sink seamlessly formed of #18 gauge, type 304 (18-8) nickel bearing stainless steel. Self-rimming.

DESIGN FEATURES

LRAD(Q) Bowl Depth: 5-1/2" (6") or 6-1/2".

Coved Corners: 1-3/4" vertical and horizontal radius.

Bowl and Faucet Deck Recess: 3/16" below outside edge of sink.

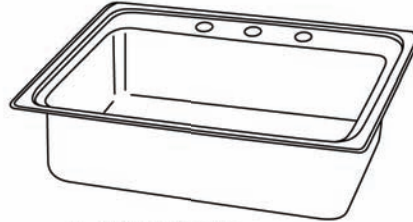
Finish: Exposed surfaces are hand blended to a lustrous high-lighted satin finish.

Underside: Fully undercoated to dampen sound and prevent condensation.

OTHER

Drain Opening: 3-1/2" (see back for locations).

NOTE: Unless otherwise specified, models with one, two, three or OS4 faucet hole option are furnished with 3 faucet holes as shown; models with choice of one, two, three, four or five faucet hole option are furnished with 4 faucet holes standard.



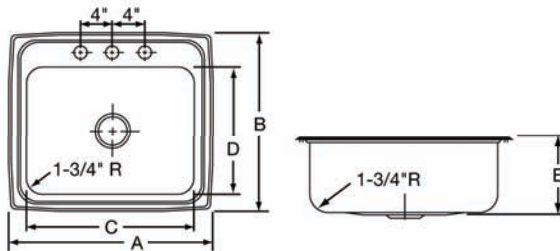
Model LRAD(Q)2521653

SINK DIMENSIONS (INCHES)*

| U-Channel Model Number | Quick-Clip [®] Model Number | Overall | | Inside Bowl | | | Cutout in Countertop (1 1/2" Radius Corners) | | No. of 1 1/2" Dia. Faucet Holes 4" Center | 3 1/2" Drain Opening (see back for details) | Minimum Cabinet Size | Ship. Wt. Lbs. |
|------------------------|--------------------------------------|---------|--------|-------------|--------|----|--|--------|---|---|----------------------|----------------|
| | | L | W | L | W | D | L | W | | | | |
| | | A | B | C | D | E | L | W | | | | |
| LRAD1316 | LRADQ1316 | 13 | 16 | 10 | 10 | ** | 12 3/8 | 15 3/8 | 1, 2, MR2 or 3 | Centered | 18 | 9 1/2 |
| LRAD1517 | LRADQ1517 | 15 | 17 1/2 | 12 | 12 | ** | 14 3/8 | 16 7/8 | 1, 2, MR2 or 3 | Centered | 18 | 9 3/4 |
| LRAD1522 | LRADQ1522 | 15 | 22 | 11 1/2 | 16 | ** | 14 3/8 | 21 3/8 | 1, 2, MR2 or 3 | Off-Centered Rear | 18 | 12 |
| LRAD1716 | LRADQ1716 | 17 | 16 | 14 | 10 | ** | 16 3/8 | 15 3/8 | 1, 2, MR2, 3 or OS4 | Centered | 21 | 8 1/2 |
| LRAD1720 | LRADQ1720 | 17 | 20 | 14 | 14 | ** | 16 3/8 | 19 3/8 | 1, 2, MR2, 3 or OS4 | Off-Centered Rear | 21 | 12 |
| LRAD1722 | LRADQ1722 | 17 | 22 | 13 1/2 | 16 | ** | 16 3/8 | 21 3/8 | 1, 2, MR2, 3 or OS4 | Off-Centered Rear | 21 | 13 |
| LRAD1918 | LRADQ1918 | 19 | 18 | 16 | 11 1/2 | ** | 18 3/8 | 17 3/8 | 1, 2, MR2, 3 or OS4 | Off-Centered Rear | 24 | 10 1/2 |
| LRAD1918L | LRADQ1918L | 19 | 18 | 16 | 11 1/2 | ** | 18 3/8 | 17 3/8 | 1, 2, MR2, 3 or OS4 | Off-Centered Left | 24 | 10 1/2 |
| LRAD1918R | LRADQ1918R | 19 | 18 | 16 | 11 1/2 | ** | 18 3/8 | 17 3/8 | 1, 2, MR2, 3 or OS4 | Off-Centered Right | 24 | 10 1/2 |
| LRAD1919 | LRADQ1919 | 19 1/2 | 19 | 16 | 13 1/2 | ** | 18 7/8 | 18 3/8 | 1, 2, MR2, 3 or OS4 | Off-Centered Rear | 24 | 13 |
| LRAD2022 | LRADQ2022 | 19 1/2 | 22 | 16 | 16 | ** | 18 7/8 | 21 3/8 | 1, 2, MR2, 3 or OS4 | Off-Centered Rear | 24 | 14 1/2 |
| LRAD2219 | LRADQ2219 | 22 | 19 1/2 | 18 | 14 | ** | 21 3/8 | 18 7/8 | 2, MR2, 3, 4 or 5 | Off-Centered Rear | 27 | 13 |
| LRAD2219L | LRADQ2219L | 22 | 19 1/2 | 18 | 14 | ** | 21 3/8 | 18 7/8 | 1, 2, MR2, 3, 4 or 5 | Off-Centered Left | 27 | 13 |
| LRAD2219R | LRADQ2219R | 22 | 19 1/2 | 18 | 14 | ** | 21 3/8 | 18 7/8 | 1, 2, MR2, 3, 4 or 5 | Off-Centered Right | 27 | 13 |
| LRAD2222 | LRADQ2222 | 22 | 22 | 19 | 16 | ** | 21 3/8 | 21 3/8 | 1, 2, MR2, 3, 4 or 5 | Off-Centered Rear | 27 | 14 |
| LRAD2521 | LRADQ2521 | 25 | 21 1/4 | 21 | 15 3/4 | ** | 24 3/8 | 20 5/8 | 1, 2, MR2, 3, 4 or 5 | Off-Centered Rear | 30 | 15 |
| LRAD2521L | LRADQ2521L | 25 | 21 1/4 | 21 | 15 3/4 | ** | 24 3/8 | 20 5/8 | 1, 2, MR2, 3, 4 or 5 | Off-Centered Left | 30 | 15 |
| LRAD2521R | LRADQ2521R | 25 | 21 1/4 | 21 | 15 3/4 | ** | 24 3/8 | 20 5/8 | 1, 2, MR2, 3, 4 or 5 | Off-Centered Right | 30 | 15 |
| LRAD3122 | LRADQ3122 | 31 | 22 | 28 | 16 | ** | 30 3/8 | 21 3/8 | 1, 2, MR2, 3, 4 or 5 | Off-Centered Rear | 36 | 19 |

*Length is left to right. Width is front to back.

**Available in 5 1/2", 6" and 6 1/2" depths. Please consult your sales representative for other depths or modifications.



THIS PRODUCT, AS CONSTRUCTED IS SUBJECT TO INTERPRETATION OF A.D.A. REQUIREMENTS. THE UNOBSTRUCTED KNEE SPACE REQUIRED TO SATISFY A.D.A. STANDARDS MAY NOT BE DESIRABLE.

ALL DIMENSIONS IN INCHES, TO CONVERT TO MILLIMETERS MULTIPLY BY 25.4.

In keeping with our policy of continuing product improvement, Elkay reserves the right to change product specifications without notice.

This specification describes an Elkay product with design, quality and functional benefits to the user. When making a comparison of other producers' offerings, be certain these features are not overlooked.

Elkay
www.elkayusa.com

2222 Camden Court
Oak Brook, IL 60523

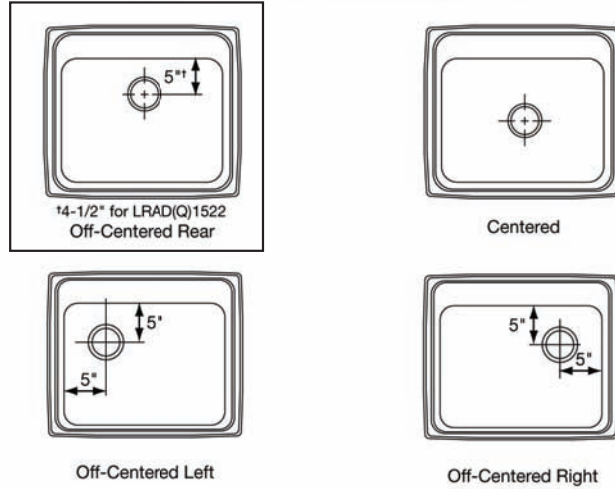
Printed in U.S.A.
©2005 Elkay
(Rev. 5/05) 1-135F

Specifications for the sink included with the **ADA 6' Cabinet**

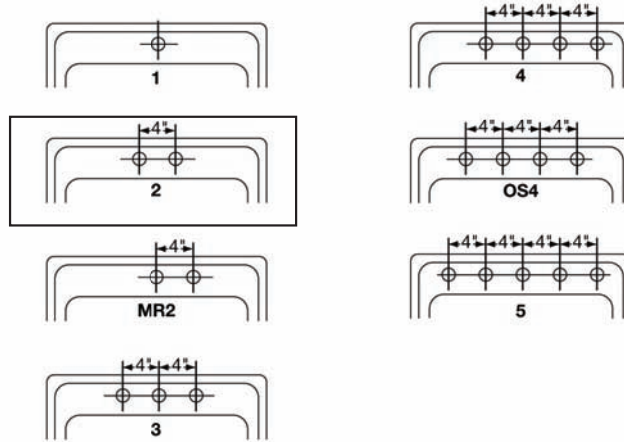
Lustertone® Single Bowl Sink
Models LRAD and LRADQ Series – A.D.A. Compliant

ELKAY®
SPECIFICATIONS

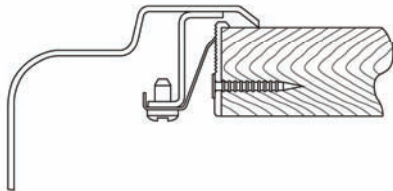
DRAIN OPENING LOCATIONS



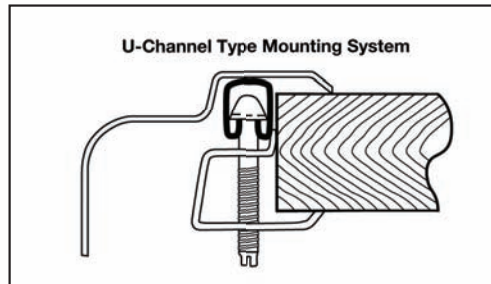
HOLE DRILLING CONFIGURATIONS



Quick-Clip® Mounting System



U-Channel Type Mounting System



Specifications for the faucet included with the ADA 6' Cabinet



Specifications

FAUCET DESCRIPTION

- Chrome plated metal construction
- 1/2" IPS connections
- Supplied with vandal resistant screws
- Valve body is of brass construction

OPERATION

- Wrist Blade style handles with hot and cold color indicators
- Hot side counterclockwise (1/4) turn to open (clockwise to close)
- Cold side clockwise (1/4) turn to open (counterclockwise to close)

FLOW

- Aerator is limited to 2.2 gpm max (8.3 L/min)

CARTRIDGE

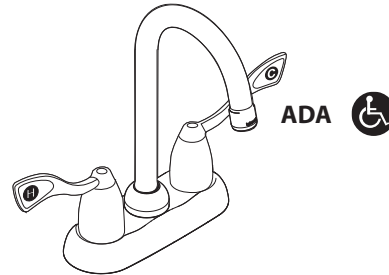
- 1224 cartridge design
- Nonmetallic and stainless steel construction

STANDARDS

- Third party certified by IAPMO and CSA to meet CSA B-125 and ASME A112.18.1M, NSF 61/9, California Proposition 65, and all applicable specifications referenced therein and complies with the applicable requirements of ANSI A117.1

WARRANTY

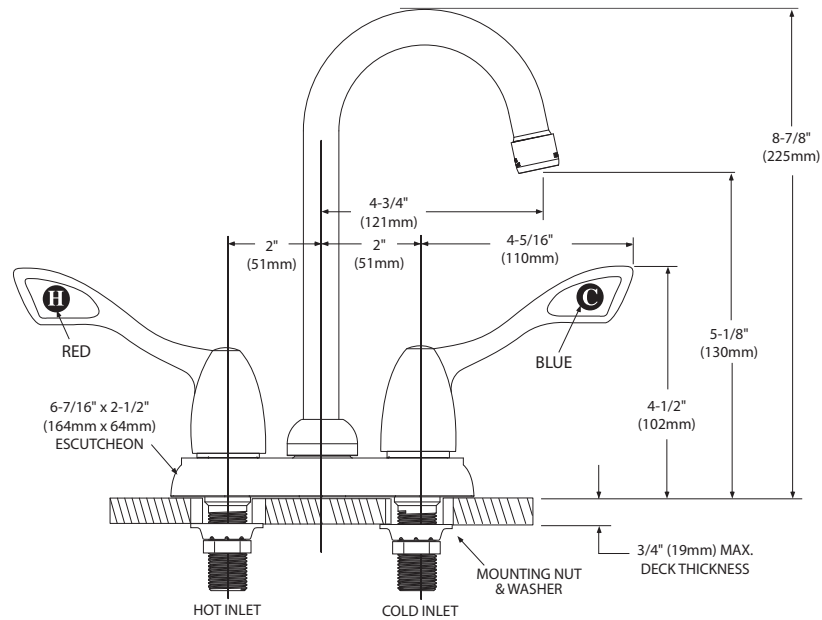
- Warranted for 5 years against material or manufacturing defects



Two-Handle Clinic Faucet

Model: 8948

NOTE: THIS FAUCET IS DESIGNED TO BE INSTALLED THROUGH 2 HOLES, 1" MIN. DIA. AND 4" ON CENTER



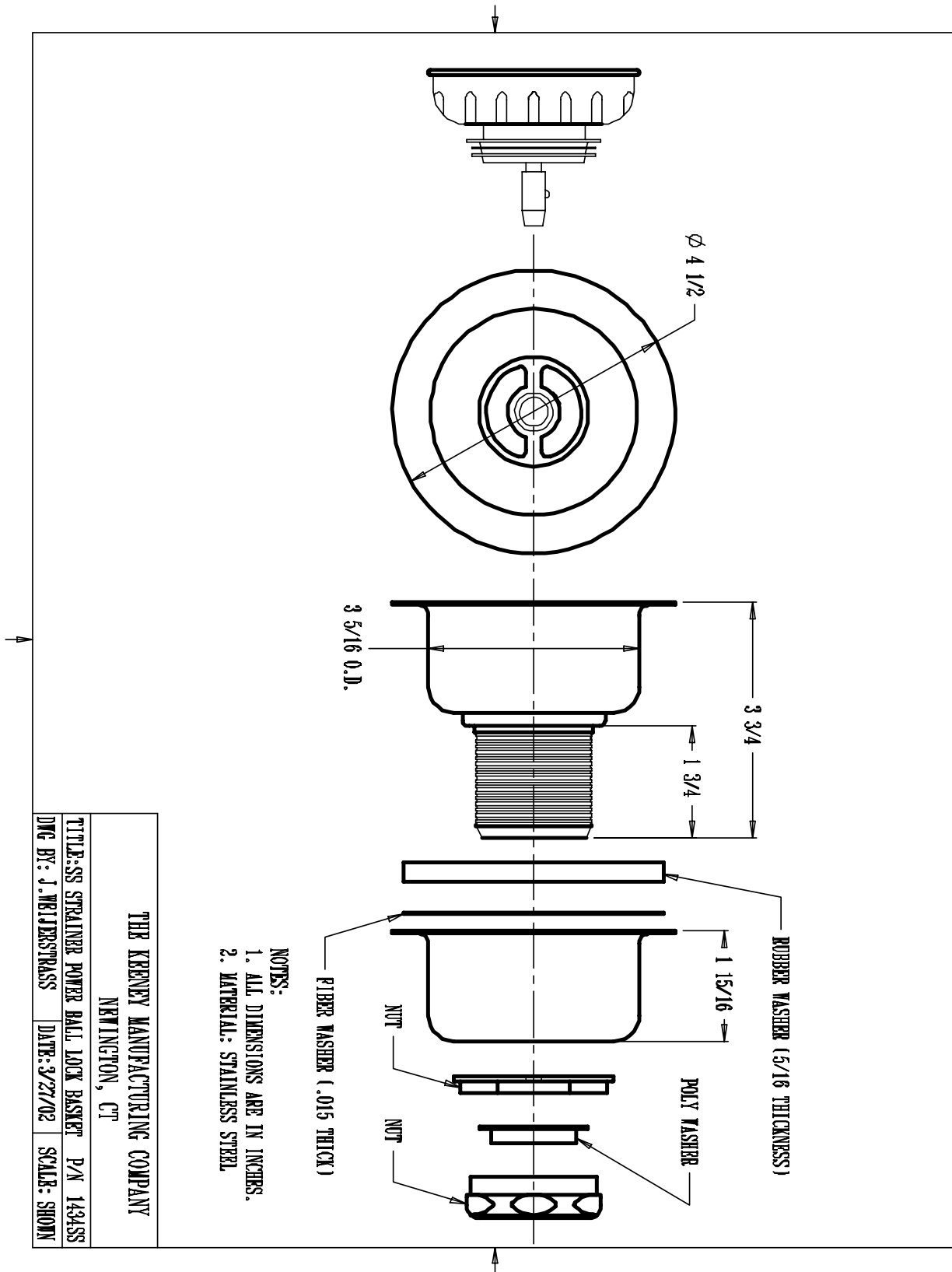
CRITICAL DIMENSIONS

(DO NOT SCALE)

MOEN SPECIFIER SERVICES 1-800-321-8809 Ext. 2158

www.moen.com

Specifications for the strainer included with the **ADA 6' Cabinet**

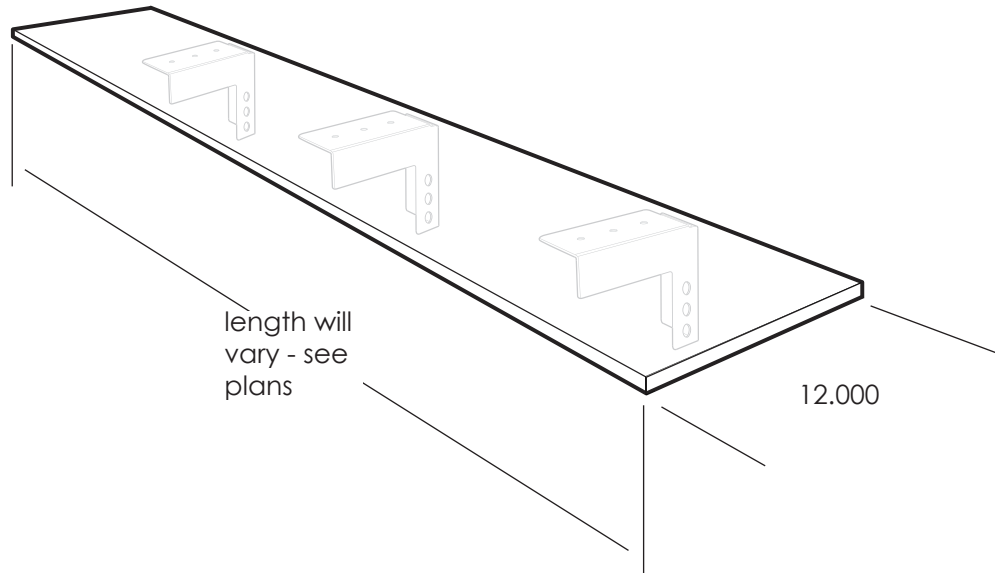


- NOTES:
1. ALL DIMENSIONS ARE IN INCHES.
 2. MATERIAL: STAINLESS STEEL

THE KRENEY MANUFACTURING COMPANY
 NEWINGTON, CT
 TITLE: SS STRAINER POWER BALL LOCK BASKET P/N 1434SS
 DWG BY: J. WEIJSERTRASS DATE: 3/27/02 SCALE: SHOWN

wadsworth

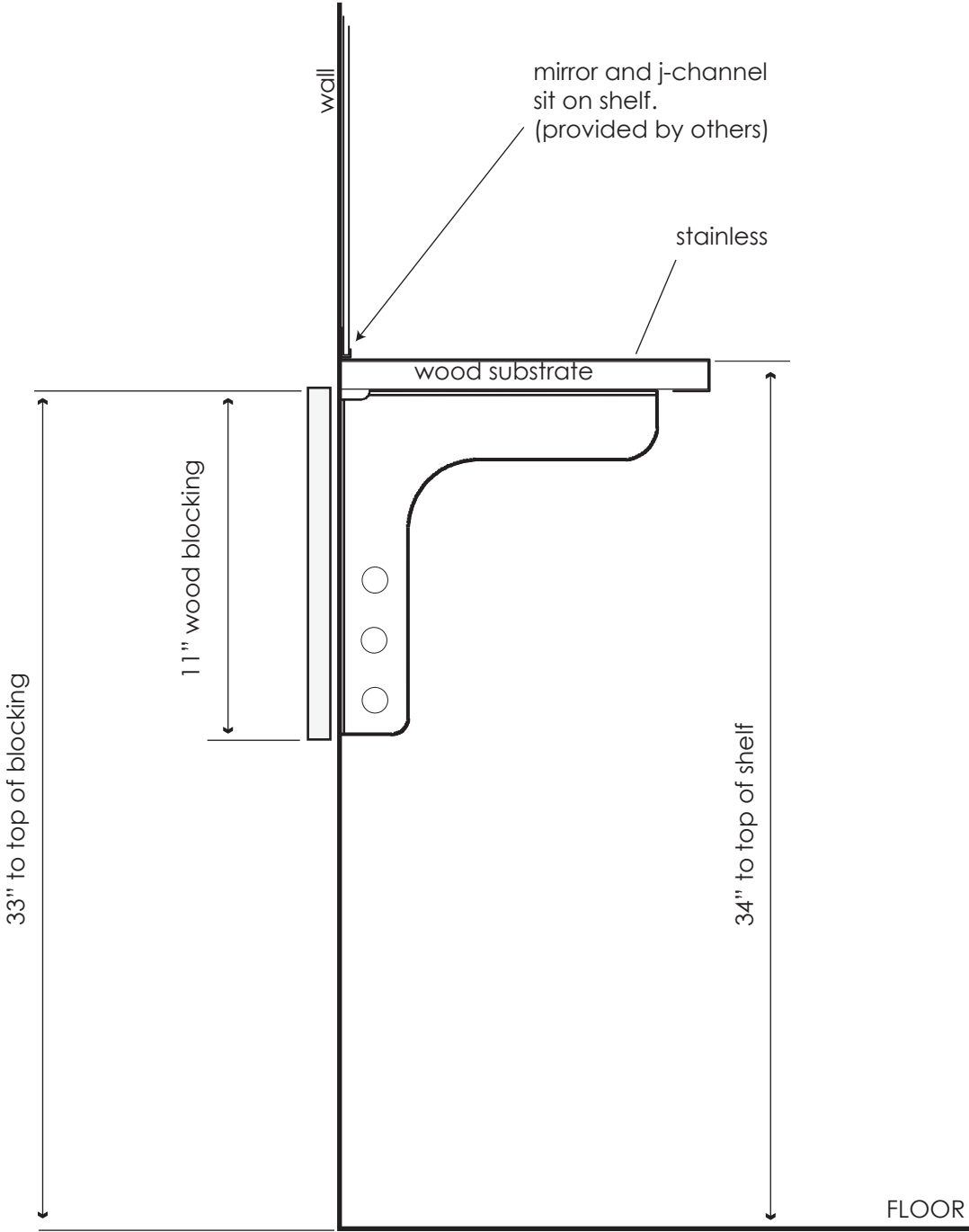
Product information for the **Mannequin Shelf**



The following parts are included with the unit:

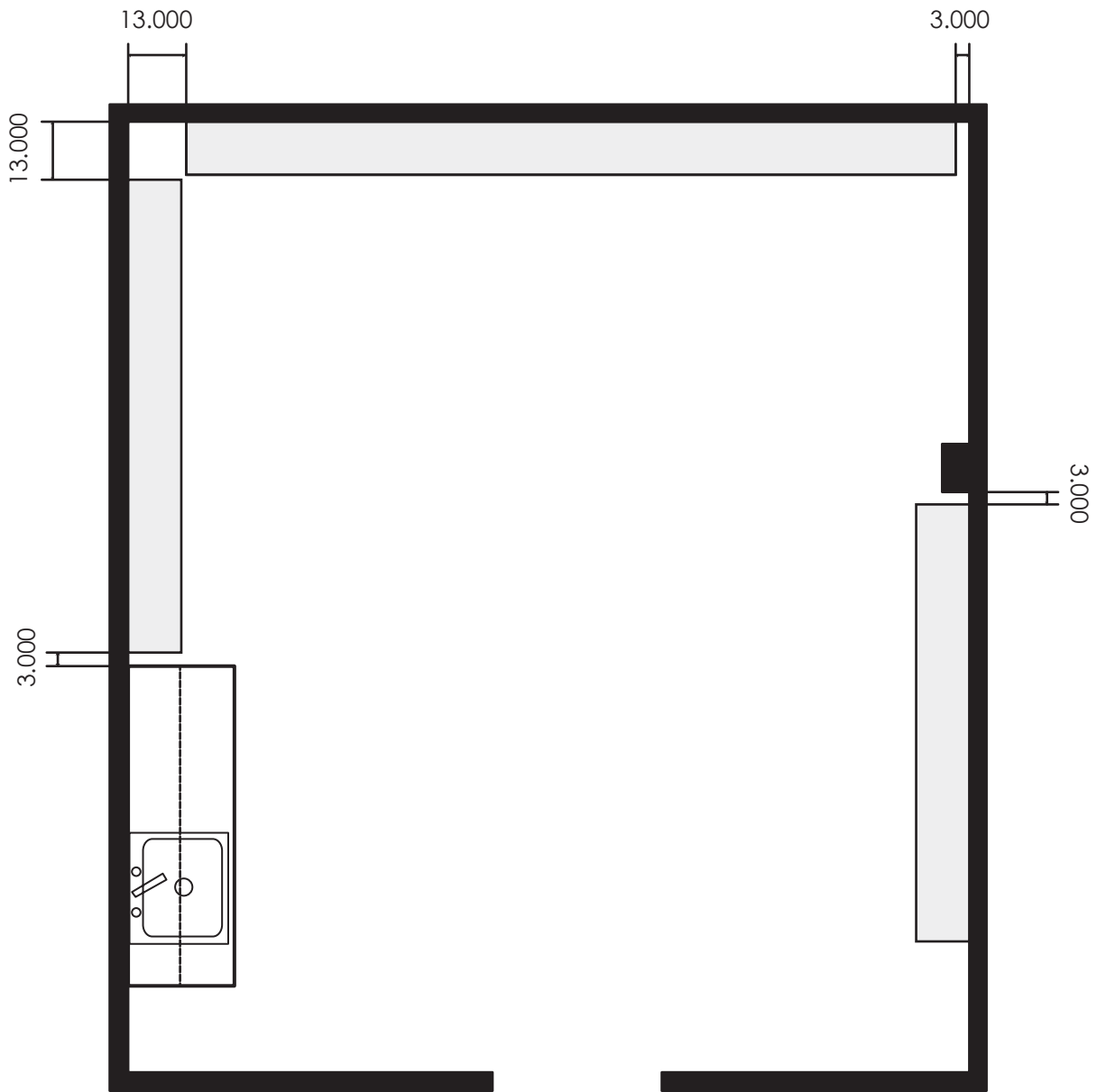
1. Shelf brackets
2. Wood shelf
3. Stainless Cover
4. Hardware

Blocking Locations for the Mannequin Shelf



1. Wood blocking is required behind the drywall for hanging mannequin shelf. Blocking should run the entire length of the shelf at the height shown above.

Typical layout for **Mannequin Shelf**



1. Shelving is installed 13" from corners where it meets another run of shelving.
2. Shelving is installed with a 3" gap between end of shelving and obstructions such as cabinets, columns, or corners where there is not another run of shelving.
3. Mirror should not exceed length of mannequin shelving.