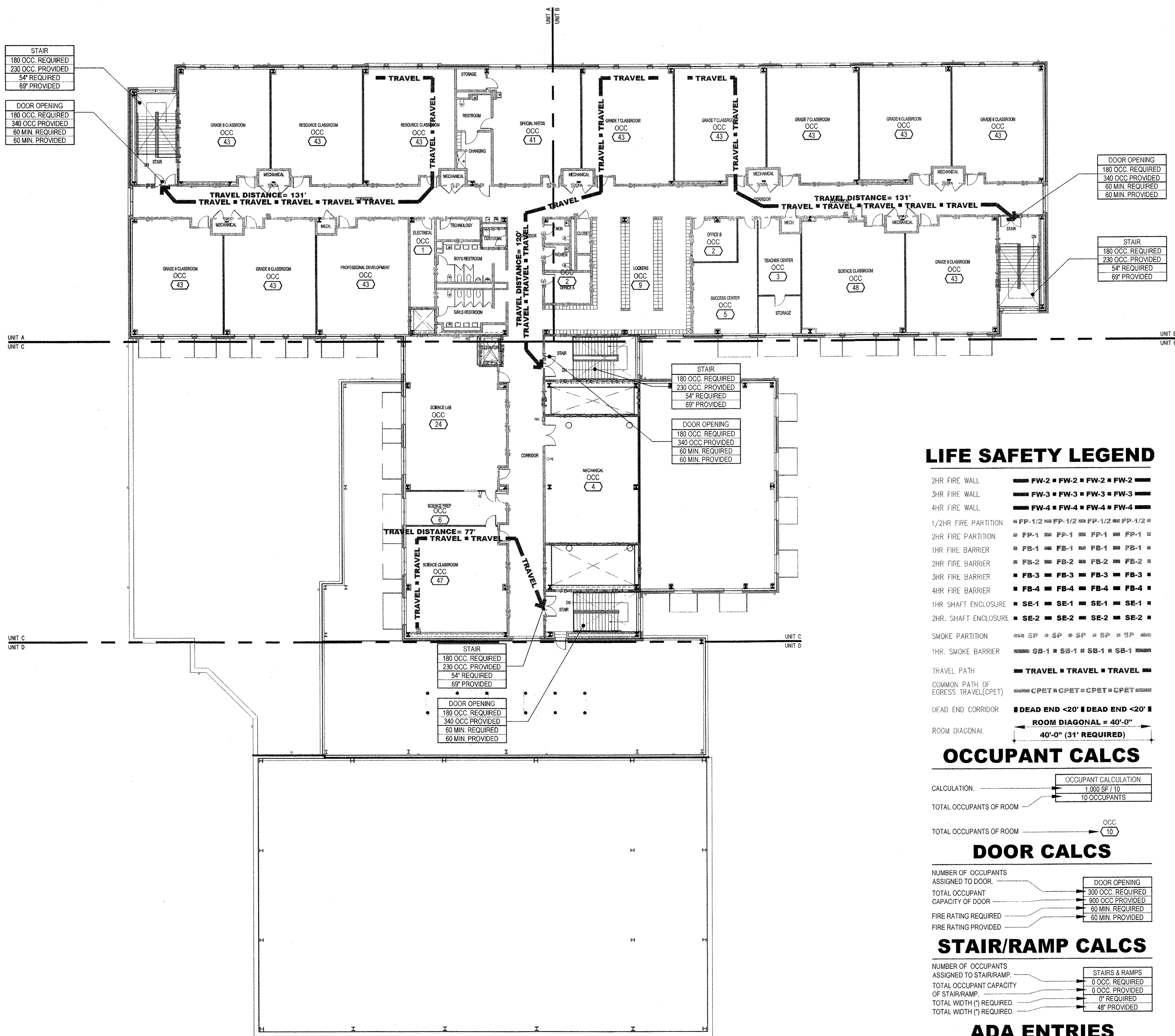


**NEW 3 SECTION ELEMENTARY SCHOOL
AT FISK-HOWARD SCHOOL
RECOVERY SCHOOL DISTRICT**

NEW ORLEANS, LOUISIANA 70119
211 S. LOPEZ STREET



STAIR
180 OCC. REQUIRED
230 OCC. PROVIDED
5'4" REQUIRED
60 MIN. PROVIDED

DOOR OPENING
180 OCC. REQUIRED
340 OCC. PROVIDED
60 MIN. REQUIRED
60 MIN. PROVIDED

STAIR
180 OCC. REQUIRED
230 OCC. PROVIDED
5'4" REQUIRED
60 MIN. PROVIDED

STAIR
180 OCC. REQUIRED
230 OCC. PROVIDED
5'4" REQUIRED
60 MIN. PROVIDED

DOOR OPENING
180 OCC. REQUIRED
340 OCC. PROVIDED
60 MIN. REQUIRED
60 MIN. PROVIDED

CODE DATA:

PROJECT LOCATION: FISK HOWARD SCHOOL
211 SOUTH LOPEZ STREET
NEW ORLEANS, LOUISIANA 70119

OWNER: RECOVERY SCHOOL DISTRICT
NEW ORLEANS, LOUISIANA

NUMBER OF STORIES: 3 STORIES

BUILDING HEIGHT: 46'-8" (1ST FL. SLAB TO TOP OF ROOF SLAB)

BUILDING SQUARE FOOTAGE (TOTAL): 110,434 SF.

BUILDING SQUARE FOOTAGE (FLOOR):
1ST FLOOR = 51,223 SF.
2ND FLOOR = 34,494 SF.
3RD FLOOR = 24,717 SF.
TOTAL = 110,434 SF.

CODE ISSUE: STATE OF LOUISIANA
NFPA 101 2009

CITY OF NEW ORLEANS
IBC 2009

BUILDING TYPE: TYPE II (0,0,0), SPRINKLED

TYPE II B, SPRINKLED
(AREA MODIFICATION FORMULA USED
(1506), FRONTAGE & SPRINKLER)

MAIN OCCUPANCY: EDUCATION

EDUCATION "E"

OCCUPANCY TYPES AND OCCUPANT LOAD PER OCCUPANCY:

FIRST FLOOR:	ASSEMBLY A2 NSF/7	653 OCC.	ASSEMBLY A4 NSF/7	1,376 OCC.
	BUSINESS GSF/100	43 OCC.	BUSINESS GSF/100	43 OCC.
	EDUCATION NSF/20	448 OCC.	EDUCATION NSF/20	448 OCC.
	FAC. LOUNGE LAYOUT	20 OCC.	FAC. LOUNGE LAYOUT	20 OCC.
	GYM CORE GSF/100	35 OCC.	GYM CORE GSF/100	35 OCC.
	KITCHEN GSF/100	46 OCC.	KITCHEN GSF/100	46 OCC.

FIRST FLOOR SUBTOTAL: 2,621 OCC. 2,621 OCC.

SECOND FLOOR:	ASSEMBLY A3 GSF/100	28 OCC.	ASSEMBLY A3 GSF/100	28 OCC.
	BUSINESS GSF/100 <td>21 OCC.</td> <td>BUSINESS GSF/100 <td>21 OCC.</td> </td>	21 OCC.	BUSINESS GSF/100 <td>21 OCC.</td>	21 OCC.
	EDUCATION NSF/20	555 OCC.	EDUCATION NSF/20	555 OCC.
	EDUCATION NSD/50	64 OCC.	EDUCATION NSD/50	64 OCC.
	EDUCATION NSF/20	128 OCC.	EDUCATION NSF/20	128 OCC.
	MECHANICAL GSF/300	9 OCC.	MECHANICAL GSF/300	9 OCC.

SECOND FLOOR SUBTOTAL: 899 OCC. 899 OCC.

THIRD FLOOR:	BUSINESS GSF/100	14 OCC.	BUSINESS GSF/100	14 OCC.
	EDUCATION NSF/20	652 OCC.	EDUCATION NSF/20	652 OCC.
	EDUCATION NSD/50	30 OCC.	EDUCATION NSD/50	30 OCC.
	LOCKER COM. GSF/50	19 OCC.	LOCKER COM. GSF/50	19 OCC.
	MECHANICAL GSF/300	4 OCC.	MECHANICAL GSF/300	4 OCC.

THIRD FLOOR SUBTOTAL: 719 OCC. 719 OCC.

OCCUPANT LOAD TOTAL: 4,239 OCC. 4,239 OCC.

OCCUPANCY SEPARATION		MIXED (NON-SEPARATED) OCCUPANCIES		SEPARATED OCCUPANCIES	
SUPERVISED AUTOMATIC SPRINKLER SYSTEM	YES	YES	YES	YES	YES
FIRE ALARM SYSTEM	YES	YES	YES	YES	YES
VERTICAL OPENINGS					
- ATRIUMS	NO	NO	NO	NO	NO
- COMMUNICATING	NO	NO	NO	NO	NO
- CONVENIENCE	NO	NO	NO	NO	NO

ADA ENTRY DATA		MIXED (NON-SEPARATED) OCCUPANCIES		SEPARATED OCCUPANCIES	
NUMBER OF PUBLIC ENTRANCES	3	3	3	3	3
NUMBER OF PUBLIC ADA ENTRANCES PROVIDED	3	3	3	3	3
PERCENT OF ADA PUBLIC ENTRANCES PROVIDED (60% ADA REQUIRED)	100%	100%	100%	100%	100%

ADDITION DATA:
REFER TO SHEETS A6.21, A6.22, A6.23 FOR PARTITION TYPES AND RELATED CODE DATA.
REFER TO SHEETS A8.00 FOR DOOR SCHEDULE AND RELATED CODE DATA.

LIFE SAFETY LEGEND

- 2HR FIRE WALL: FW-2 # FW-2 # FW-2 # FW-2
- 3HR FIRE WALL: FW-3 # FW-3 # FW-3 # FW-3
- 4HR FIRE WALL: FW-4 # FW-4 # FW-4 # FW-4
- 1/2HR FIRE PARTITION: FP-1/2 # FP-1/2 # FP-1/2 # FP-1/2
- 2HR FIRE PARTITION: FP-1 # FP-1 # FP-1 # FP-1
- 1HR FIRE BARRIER: FB-1 # FB-1 # FB-1 # FB-1
- 2HR FIRE BARRIER: FB-2 # FB-2 # FB-2 # FB-2
- 3HR FIRE BARRIER: FB-3 # FB-3 # FB-3 # FB-3
- 4HR FIRE BARRIER: FB-4 # FB-4 # FB-4 # FB-4
- 1HR SHAFT ENCLOSURE: SE-1 # SE-1 # SE-1 # SE-1
- 2HR SHAFT ENCLOSURE: SE-2 # SE-2 # SE-2 # SE-2
- SMOKE PARTITION: SP # SP # SP # SP
- 1HR SMOKE BARRIER: SB-1 # SB-1 # SB-1 # SB-1
- TRAVEL PATH: TRAVEL # TRAVEL # TRAVEL
- COMMON PATH OF EGRESS TRAVEL(CPET): CPET # CPET # CPET
- DEAD END CORRIDOR: DEAD END <20' # DEAD END <20'
- ROOM DIAGONAL: ROOM DIAGONAL = 40'-0" # 40'-0" (31' REQUIRED)

OCCUPANT CALCS

CALCULATION:	OCCUPANT CALCULATION
1,000 SF / 10	10 OCCUPANTS
TOTAL OCCUPANTS OF ROOM	10

DOOR CALCS

NUMBER OF OCCUPANTS ASSIGNED TO DOOR:	DOOR OPENING
300 OCC. REQUIRED	300 OCC. PROVIDED
900 OCC. PROVIDED	60 MIN. REQUIRED
60 MIN. REQUIRED	60 MIN. PROVIDED
FIRE RATING REQUIRED	
FIRE RATING PROVIDED	

STAIR/RAMP CALCS

NUMBER OF OCCUPANTS ASSIGNED TO STAIR/RAMP:	STAIRS & RAMPS
0 OCC. REQUIRED	0 OCC. PROVIDED
0 OCC. PROVIDED	0' REQUIRED
0' REQUIRED	48" PROVIDED
TOTAL WIDTH (") REQUIRED:	
TOTAL WIDTH (") PROVIDED:	

ADA ENTRIES

BUILDING ENTRANCE TYPE	PUBLIC ENTRY ADA	PUBLIC ENTRY NON-ADA	NO PUBLIC ENTRY

DATE ISSUED: 7 DECEMBER, 2012
REVISED:
REVISED:
REVISED:
REVISED:
DRAWN BY: ELR, RP8, CMB
CHECKED BY: DGR, JFM
PHASE:

BID DOCUMENTS

11085

TITLE:
LIFE SAFETY PLAN
OVERALL 3TH FLOOR

SHEET:

A0.06